

HIGHWAY CLASSIFICATION

A.D.T. (2019)	1,150	PV = 87.83%
PROJECTED ADT (2039)	1,250	SU = 4.35%
DESIGN SPEED	55	MU = 7.83%
POSTED SPEED	55	
CLASSIFICATION: MINOR ARTERIAL		

FOR INDEX OF SHEETS, SEE SHEET NO. 2

**STATE OF ILLINOIS
DEPARTMENT OF TRANSPORTATION**

**PROPOSED
HIGHWAY PLANS**

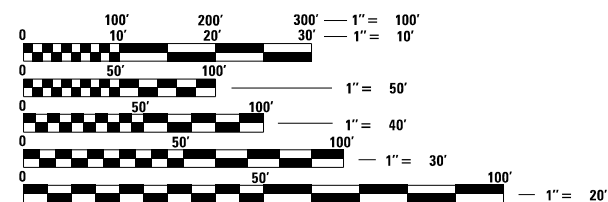
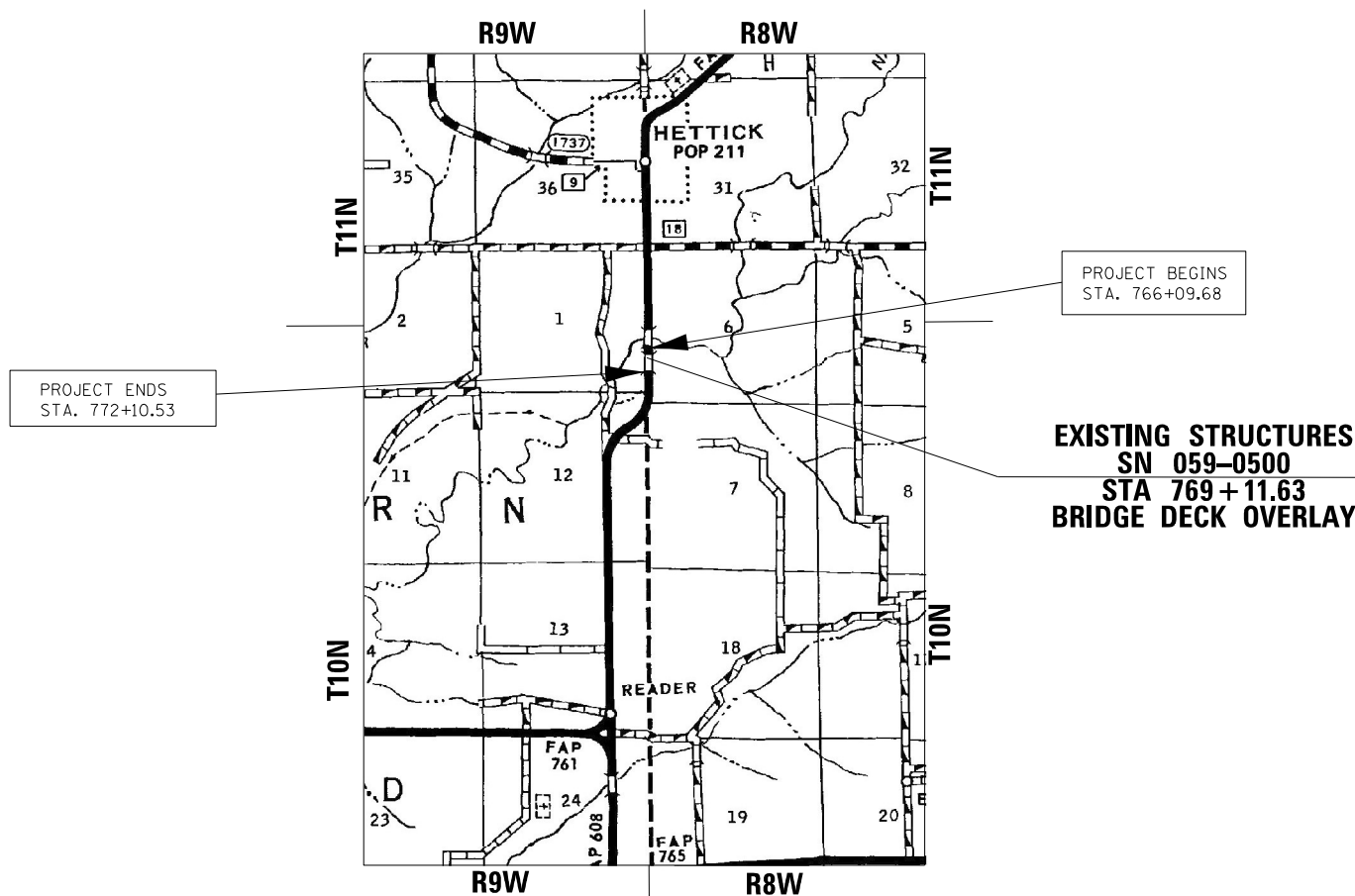
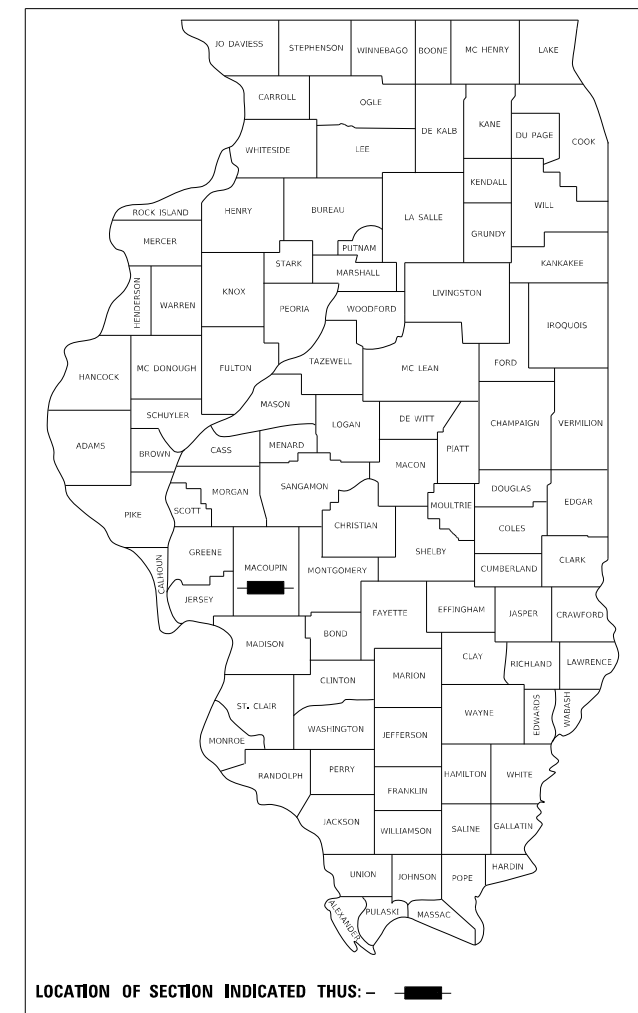
**FAP 608 (ROUTE IL 111)
SECTION (122) BDR
PROJECT STP-6GWY(739)
BRIDGE DECK OVERLAY
MACOUPIN COUNTY**

C-96-128-20

F.A.P. RTE.	SECTION	COUNTY	TOTAL SHEETS	SHEET NO.
608	(122) BDR	MACOUPIN	21*	1
ILLINOIS			CONTRACT NO. 72M28	

* 21 + 1 = 22 TOTAL SHEETS

D-96-098-20



FULL SIZE PLANS HAVE BEEN PREPARED USING STANDARD ENGINEERING SCALES. REDUCED SIZED PLANS WILL NOT CONFORM TO STANDARD SCALES. IN MAKING MEASUREMENTS ON REDUCED PLANS, THE ABOVE SCALES MAY BE USED.

J.U.L.I.E.
JOINT UTILITY LOCATION INFORMATION FOR EXCAVATORS
1-800-892-0123
OR 811

PROJECT ENGINEER: JAY EDWARDS (217-785-0596)
PROJECT MANAGER: ROBERT MILES (217-524-8911)

CONTRACT NO. 72M28

GROSS LENGTH = 600.85 FT. = 0.114 MILE
NET LENGTH = 600.85 FT. = 0.114 MILE

STATE OF ILLINOIS
DEPARTMENT OF TRANSPORTATION

SUBMITTED December 23, 20 21

Jay P. Myers
REGIONAL ENGINEER

February 4, 20 22
[Signature]
ENGINEER OF DESIGN AND ENVIRONMENT

February 4, 20 22
Stephen M. Lewis
DIRECTOR OF HIGHWAYS PROJECT IMPLEMENTATION

**PRINTED BY THE AUTHORITY
OF THE STATE OF ILLINOIS**

STANDARDS

000001-08	STANDARD SYMBOLS, ABBREVIATIONS, AND PATTERNS
630001-12	STEEL PLATE BEAM GUARDRAIL
630301-09	SHOULDER WIDENING FOR TYPE 1 (SPECIAL) GUARDRAIL TERMINALS
631031-17	TRAFFIC BARRIER TERMINAL, TYPE 6
701001-02	OFF-ROAD OPERATIONS, 2L, 2W, MORE THAN 15' (4.5 M) AWAY
701006-05	OFF-ROAD OPERATIONS, 2L, 2W, 15' (4.5 M) TO 24" (600 MM) FROM PAVEMENT EDGE
701301-04	LANE CLOSURE, 2L, 2W, SHORT TIME OPERATIONS
701306-04	LANE CLOSURE, 2L, 2W, SLOW MOVING OPERATIONS DAY ONLY, FOR SPEEDS GREATER THAN OR EQUAL TO 45 MPH
701311-03	LANE CLOSURE, 2L, 2W, MOVING OPERATIONS - DAY ONLY
701316-13	LANE CLOSURE, 2L, 2W, BRIDGE REPAIR, FOR SPEEDS GREATER THAN OR EQUAL TO 45 MPH
701901-08	TRAFFIC CONTROL DEVICES
725001-01	OBJECT AND TERMINAL MARKERS
780001-05	TYPICAL PAVEMENT MARKINGS
781001-04	TYPICAL APPLICATIONS RAISED REFLECTIVE PAVEMENT MARKERS
782006-01	GUARDRAIL AND BARRIER WALL REFLECTOR MOUNTING DETAILS
001001-02	AREAS OF REINFORCEMENT BARS
001006	DECIMAL OF AN INCH AND OF A FOOT
420001-10	PAVEMENT JOINTS
610001-09	SHOULDER INLET WITH CURB

GENERAL NOTES

- 1 SYNTHETIC FIBERS ARE NOT REQUIRED IN THE BRIDGE DECK MICROSILICA OVERLAY.
- 2 AREAS OF DECK REPAIR SHOWN ARE ESTIMATED. THE ENGINEER SHALL SHOW ACTUAL LOCATIONS OF DECK REPAIRS ON AS-BUILT PLANS.
- 3 ANY FULL DEPTH PATCHES THAT ARE DISCOVERED SHALL BE COVERED WHEN WORKERS ARE NOT PRESENT

RATE TABLE

THE FOLLOWING RATES OF APPLICATION HAVE BEEN ASSUMED IN CALCULATING PLAN QUANTITIES.

BITUMINOUS MATERIALS (TACK COAT):	0.05 LBS/SQ FT (MILLING, CONCRETE)
	0.025 LBS/SQ FT (HMA LIFTS)
HMA SURFACE MIX "C":	0.056 TONS/SQ YD*INCH

INDEX OF SHEETS

1	COVER SHEET
2	INDEX OF SHEETS, LISTS OF STANDARDS, GENERAL NOTES AND COMMITMENTS
3-5	SUMMARY OF QUANTITIES
6	SCHEDULE OF QUANTITIES
7	ROADWAY TYPICAL SECTIONS
8-9	ROADWAY PLAN SHEETS
10	STAGING TYPICAL SECTIONS
11	WIDTH RESTRICTION SIGNING
12-13	TRAFFIC CONTROL PLANS
14-20	STRUCTURE PLANS (7)
20A	EXISTING STRUCTURE PLAN
21	INLET ADJUSTMENT DETAIL

COMMITMENTS

NONE

MIXTURE TABLES

Location(s):	FAP 608 (IL 111)	FAP 608 (IL 111)
MIXTURE USE(S):	HMA SURFACE COURSE	HMA SHOULDERS
PG:	PG 64-22	PG 64-22
DESIGN AIR VOIDS:	4.0% @ N50	4.0% @ N50
Mixture Composition:	IL-9.5	IL-9.5
FRICITION AGGREGATE:	MIX "C"	MIX "C"
MIXTURE WEIGHT:	112 LB/SY*IN	112 LB/SY*IN
Quality Management:	QC/QA	QC/QA
Mixture Sublot Size:	N/A	N/A
MATERIAL TRANSFER DEVICE REQUIRED:	NO	NO

**STATE OF ILLINOIS
DEPARTMENT OF TRANSPORTATION
DIVISION OF HIGHWAYS
DISTRICT 6**

EXAMINED December 17 20 21
[Signature]
ENGINEER OF OPERATIONS

EXAMINED December 21 20 21
[Signature]
ENGINEER OF PROJECT IMPLEMENTATION

EXAMINED December 20 20 21
[Signature]
ENGINEER OF PROGRAM DEVELOPMENT

MOE:\Default\pwworkspace\benlley.com\Projects\DOT\Office\District 6\Projects\672M28\CADD\DATA\CAD\DWG\672M28-SH-CENOTED.DWG

REV. - MS

USER NAME = milesra	DESIGNED -	REVISED -	STATE OF ILLINOIS DEPARTMENT OF TRANSPORTATION	INDEX OF SHEETS, HIGHWAY STANDARDS, AND GENERAL NOTES	F.A.P. RTE.	SECTION	COUNTY	TOTAL SHEETS	SHEET NO.	
	DRAWN -	REVISED -			608	(122) BDR	MACOUPIN	21	2	
PLOT SCALE = 2.0000' / in.	CHECKED -	REVISED -			CONTRACT NO. 72M28					
PLOT DATE = 12/22/2021	DATE -	REVISED -			SCALE: N/A	SHEET 1 OF 1 SHEETS	STA. N/A	TO STA. N/A	ILLINOIS FED. AID PROJECT	

				6-01453-0000
				80% FEDERAL 20% STATE
CODE NO.	ITEM	UNIT	TOTAL QUANTITY	BRIDGE
				0059 S.N. 059-0500
40600290	BITUMINOUS MATERIALS (TACK COAT)	POUND	207	207
40600370	LONGITUDINAL JOINT SEALANT	FOOT	70	70
40600982	HOT-MIX ASPHALT SURFACE REMOVAL - BUTT JOINT	SQ YD	249	249
40600990	TEMPORARY RAMP	SQ YD	85	85
40604050	HOT-MIX ASPHALT SURFACE COURSE, IL-9.5, MIX "C", N50	TON	39	39
48203100	HOT-MIX ASPHALT SHOULDERS	TON	6	6
50102400	CONCRETE REMOVAL	CU YD	4	4
50300255	CONCRETE SUPERSTRUCTURE	CU YD	5.4	5.4
50300260	BRIDGE DECK GROOVING	SQ YD	1202	1202
50300300	PROTECTIVE COAT	SQ YD	1241	1241
50800205	REINFORCEMENT BARS, EPOXY COATED	POUND	400	400
50800515	BAR SPLICERS	EACH	8	8
52000110	PREFORMED JOINT STRIP SEAL	FOOT	69	69
* 63000001	STEEL PLATE BEAM GUARDRAIL, TYPE A, 6 FOOT POSTS	FOOT	425	425

* SPECIALTY ITEM

REV. - MS

MODEL: Default
 FILE NAME: p:\11468-294-bentley.com-PWIDOT\Documents\DOT Offices\District 6\Projects\0672M28\CAD\Drawings\0672M28-sh-500.dgn

USER NAME = milesra	DESIGNED -	REVISED -	STATE OF ILLINOIS DEPARTMENT OF TRANSPORTATION		SUMMARY OF QUANTITIES				F.A.P. RTE.	SECTION	COUNTY	TOTAL SHEETS	SHEET NO.	
DRAWN -	REVISIED -	REVISIED -							608	(122) BDR	MACOUPIN	21	3	
PLOT SCALE = 2.0000 ' / in.	CHECKED -	REVISIED -			SCALE: N/A		SHEET 1	OF 1	SHEETS	STA. N/A	TO STA. N/A	CONTRACT NO. 72M28		
PLOT DATE = 12/22/2021	DATE -	REVISIED -			ILLINOIS FED. AID PROJECT									

MODEL: Default
 FILE NAME: p:\uldr-2w-bentley.com\PROJECTS\DOT Offices\District 6\Projects\0672M28\CAD\Drawings\0672M28-shs-S04.dgn

				6-01453-0000
				80% FEDERAL 20% STATE
				BRIDGE
				0059
CODE NO.	ITEM	UNIT	TOTAL QUANTITY	S.N. 059-0500
78300202	PAVEMENT MARKING REMOVAL - WATER BLASTING	SQ FT	250	250
* X5060601	CONTAINMENT AND DISPOSAL OF NON-LEAD PAINT CLEANING RESIDUES NO. 1	L SUM	1	1
X6024503	INLETS TO BE ADJUSTED WITH NEW FRAME AND GRATE (SPECIAL)	EACH	4	4
X7200201	WIDTH RESTRICTION SIGNING	L SUM	1	1
Z0001800	APPROACH SLAB REPAIR (PARTIAL DEPTH)	SQ YD	3	3
* Z0010501	CLEANING AND PAINTING STEEL BRIDGE NO. 1	L SUM	1	1
Z0012130	BRIDGE DECK SCARIFICATION 3/4"	SQ YD	1223	1223
Z0012164	BRIDGE DECK MICROSILICA CONCRETE OVERLAY 2 1/2"	SQ YD	1223	1223
Ø Z0076600	TRAINEES	hour	500	500
Z0012754	STRUCTURAL REPAIR OF CONCRETE (DEPTH EQUAL TO OR LESS THAN 5 INCHES)	SQ FT	35	35
Ø Z0076604	TRAINEES TRAINING PROGRAM GRADUATE	hour	500	500
Z0016200	DECK SLAB REPAIR (PARTIAL DEPTH)	SQ YD	253	253

* SPECIALTY ITEM

Ø 0042

REV. - MS

USER NAME = milesra	DESIGNED -	REVISED -	STATE OF ILLINOIS DEPARTMENT OF TRANSPORTATION	SUMMARY OF QUANTITIES				F.A.P. RTE.	SECTION	COUNTY	TOTAL SHEETS	SHEET NO.		
	DRAWN -	REVISED -		SCALE: N/A	SHEET 1	OF 1	SHEETS	STA. N/A	TO STA. N/A	608	(122) BDR	MACOUPIN	21	5
PLOT SCALE = 2.0000' / in.	CHECKED -	REVISED -		CONTRACT NO. 72M28										
PLOT DATE = 12/23/2021	DATE -	REVISED -		ILLINOIS FED. AID PROJECT										

HMA SCHEDULE										
LOCATION					40600290	40600370	40600982	40604050	48203100	NOTES
					BITUMINOUS MATERIALS (TACK COAT)	LONGITUDINAL JOINT SEALANT	HOT-MIX ASPHALT SURFACE REMOVAL - BUTT JOINT	HOT-MIX ASPHALT SURFACE COURSE, IL-9.5, MIX "C", N50	HOT-MIX ASPHALT SHOULDERS	
					POUND	FOOT	SQ YD	TON	TON	
FAP 608 (IL 111)										
STA	766+09.7	TO	766+44.7	LEFT SHLDR	7		15.6		1.5	BUTT JOINT
STA	766+09.7	TO	766+44.7	RIGHT SHLDR	7		15.6		1.5	BUTT JOINT
STA	766+09.7	TO	766+44.7	MAINLINE	42	35	93.3	9.1		BUTT JOINT
STA	766+44.7	TO	766+74.5	BRIDGE APPROACH	47			10.2		APPROACH OVERLAY
STA	771+45.3	TO	771+75.5	BRIDGE APPROACH	48			10.4		APPROACH OVERLAY
STA	771+75.5	TO	772+10.5	LEFT SHLDR	7		15.6		1.5	BUTT JOINT
STA	771+75.5	TO	772+10.5	RIGHT SHLDR	7		15.6		1.5	BUTT JOINT
STA	771+75.5	TO	772+10.5	MAINLINE	42	35	93.3	9.1		BUTT JOINT
TOTAL					207	70	248.9	38.9	6.1	
USE					207	70	249	39	6	

GUARDRAIL SCHEDULE										
LOCATION					63000001	63100085	63100167	63200310	7250100	78200005
					STEEL PLATE GUARDRAIL TYPE A, 6' POSTS	TRAFFIC BARRIER TERMINAL, TYPE 6	TRAFFIC BARRIER TERMINAL, TYPE 1 (SPECIAL) TANGENT	GUARDRAIL REMOVAL	TERMINAL MARKER-DIRECT APPLIED	GUARDRAIL REFLECTORS, TYPE A
					FOOT	EACH	EACH	FOOT	EACH	EACH
FAP 608 (IL 111)										
STA	764+60.3	TO	766+66.6	RIGHT	118.8	1	1	211	1	4
STA	765+61.0	TO	766+67.0	LEFT	69.5	1	0	107	0	4
STA	771+53.3	TO	773+14.0	RIGHT	72.3	1	1	161	1	4
STA	771+45.3	TO	774+00.0	LEFT	159.0	1	1	255	1	4
TOTAL					419.6	4	3	733	3	16
USE					425					

RAISED REFLECTIVE PM SCHEDULE	
78300200	
LOCATION	
RAISED REFLECTIVE PAVEMENT MARKER REMOVAL	
FAP 608 (IL 111)	
STA	771+45.3 TO 771+75.5
EACH	
TOTAL	
1	

ADJUSTMENTS SCHEDULE	
X6024503	
LOCATION	
INLETS TO BE ADJUSTED WITH NEW FRAME AND GRATE (SPECIAL)	
EACH	
SN 059-0500	
SOUTH APPROACH	
2	
NORTH APPROACH	
2	
TOTAL	
4	

PAVEMENT MARKINGS SCHEDULE						
LOCATION				78009005	78300202	NOTES
				MODIFIED URETHANE PAVEMENT MARKING LINE 5"	PAVEMENT MARKING REMOVAL - WATER BLASTING	
				FOOT	SQ FT	
FAP 608 (IL 111)						
STA	766+09.7	TO	772+10.5		250	LEFT EDGE LINE (5")
STA	766+09.7	TO	772+10.5	601		FINAL EDGE LINE (WHITE) EB
STA	766+09.7	TO	772+10.5	150		FINAL CENTERLINE EB
STA	766+09.7	TO	772+10.5	601		FINAL EDGE LINE (YELLOW) EB
TOTAL				1352	250	

TEMPORARY RAMP SCHEDULE			
LOCATION		40600990	NOTES
		TEMPORARY RAMP	
		SQ YD	
STA 766+09.68		21.3	6' X 32'
STA 766+44.68		21.3	6' X 32'
STA 771+45.27		21.3	6' X 32'
STA 772+10.53		21.3	6' X 32'
TOTAL		85	

MODEL: Default
 FILE: MainE:\pwworkspace\benhitey.com\PROJECTS\DOT Documents\DOT Office\District 6\Projects\0672M28\CADD\DATA\CAD\Notes\0672M28-shs-schedule.dgn

USER NAME = milesra	DESIGNED -	REVISED -
	DRAWN -	REVISED -
PLOT SCALE = 2.0000' / in.	CHECKED -	REVISED -
PLOT DATE = 12/22/2021	DATE -	REVISED -

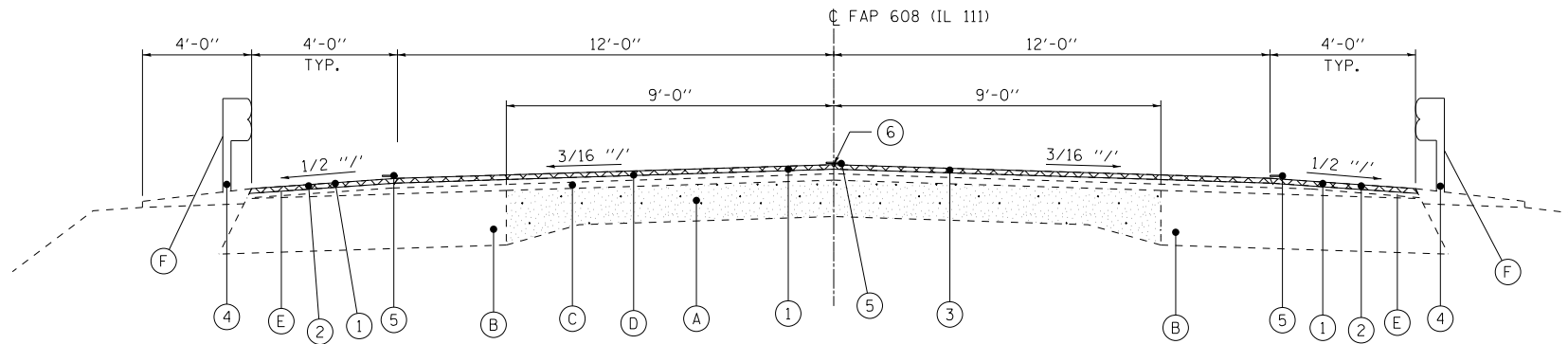
STATE OF ILLINOIS
DEPARTMENT OF TRANSPORTATION

SCALE: N/A		SHEET 1	OF 1	SHEETS	STA. N/A	TO STA. N/A
------------	--	---------	------	--------	----------	-------------

SCHEDULES

F.A.P. RTE.	SECTION	COUNTY	TOTAL SHEETS	SHEET NO.
608	(122) BDR	MACOUPIN	21	6
ILLINOIS FED. AID PROJECT			CONTRACT NO. 72M28	

REV. - MS



TYPICAL FAP 608 (IL 111) SECTION

STA 766+09.68 TO STA 766+74.54
 STA 771+45.27 TO STA 772+10.53

EXISTING LEGEND

- (A) EXISTING PCC PAVEMENT, 9"-6"-9"
- (B) EXISTING HMA BASE COURSE WIDENING, 9"
- (C) EXISTING HMA OVERLAY, 1" (TYPICAL)
- (D) EXISTING HMA OVERLAY, 1 1/2" (TYPICAL)
- (E) EXISTING HMA SHOULDERS, VARIABLE DEPTH
- (F) EXISTING GUARDRAIL

PROPOSED LEGEND

- (1) PROPOSED HOT-MIX ASPHALT SURFACE REMOVAL (BUTT JOINT)
- (2) PROPOSED HMA SHOULDERS, 1 3/4"
- (3) PROPOSED HOT-MIX ASPHALT SURFACE COURSE, MIX "C", N50, 1 3/4"
- (4) PROPOSED STEEL PLATE BEAM GUARDRAIL (SEE PLANS FOR LOCATIONS)
- (5) PROPOSED MODIFIED URETHANE PAVEMENT MARKING LINE 5"
- (6) PROPOSED LONGITUDINAL JOINT SEAL

MODEL: Default
 FILE: MainE_pxl\lides-2w_bentley.com:PHWDOT\Documents\DOT Offices\District 6\Projects\0672M28\CADD\Bids\CAD\Drawings\0672M28-shc-typical.dgn

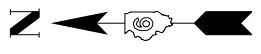
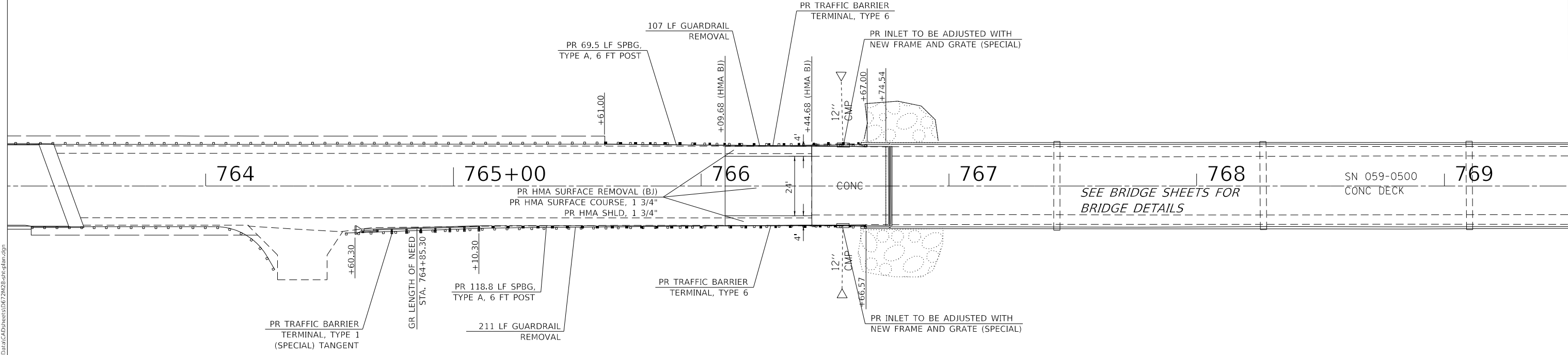
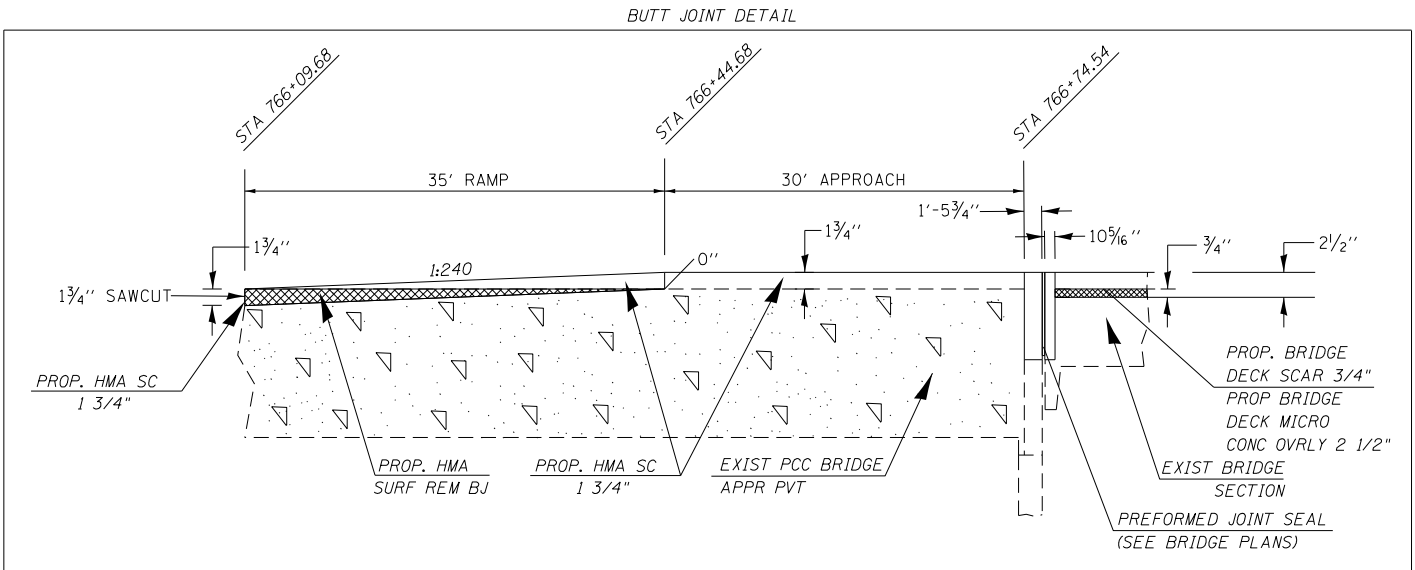
USER NAME = milesra	DESIGNED -	REVISED -
	DRAWN -	REVISED -
PLOT SCALE = 2.0000' / in.	CHECKED -	REVISED -
PLOT DATE = 12/22/2021	DATE -	REVISED -

**STATE OF ILLINOIS
 DEPARTMENT OF TRANSPORTATION**

**TYPICAL SECTIONS
 FAP 608 (IL 111)**

SCALE: N/A SHEET 1 OF 1 SHEETS STA. N/A TO STA. N/A

F.A.P. RTE.	SECTION	COUNTY	TOTAL SHEETS	SHEET NO.
608	(122) BDR	MACOUPIN	21	7
ILLINOIS			FED. AID PROJECT	
			CONTRACT NO. 72M28	



MODEL: Default
 FILE: MainE_pxl\lides-2w_bentley.com:PHWDOT\Documents\DOT Offices\District 6\Projects\0672M28\CADD\DATA\CAD\Notes\0672M28-shc-plan.dgn

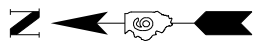
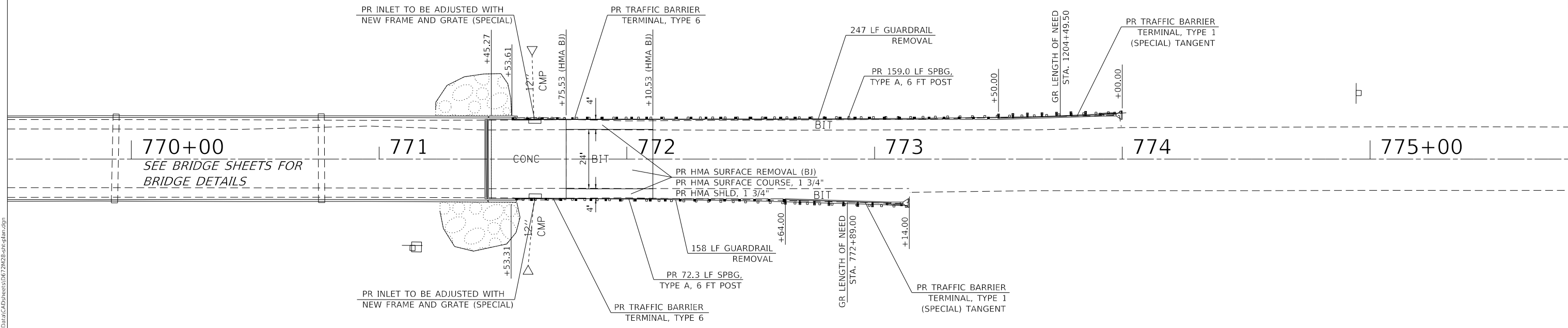
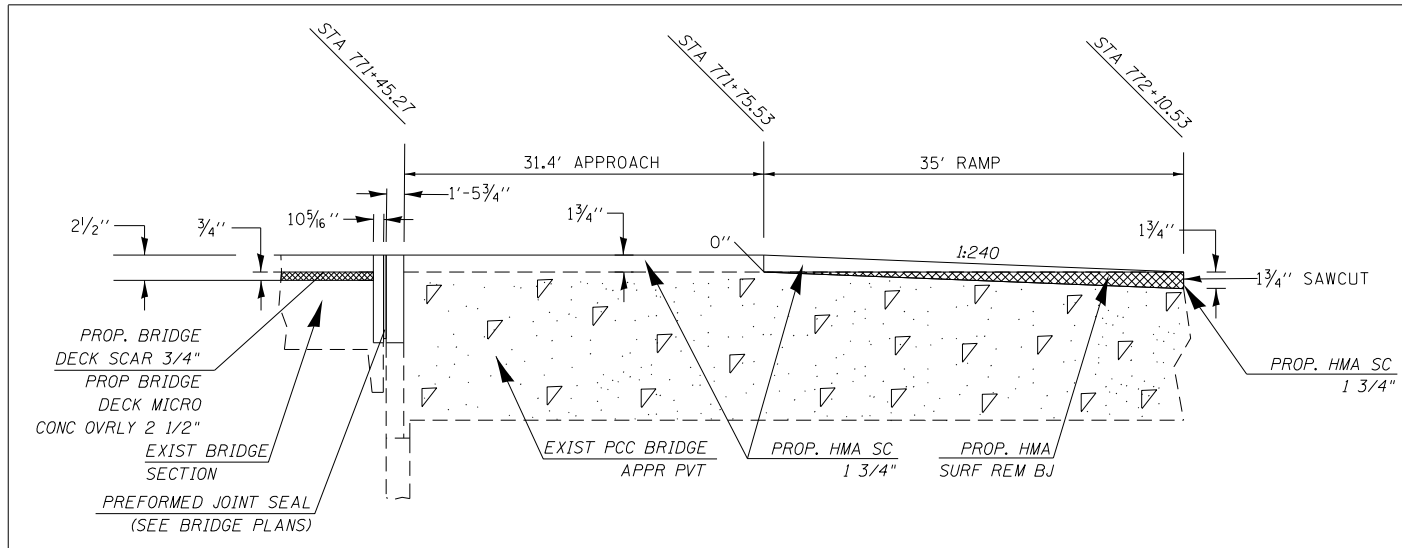
USER NAME = milesra	DESIGNED -	REVISED -
	DRAWN -	REVISED -
PLOT SCALE = 40.0000' / in.	CHECKED -	REVISED -
PLOT DATE = 12/22/2021	DATE -	REVISED -

**STATE OF ILLINOIS
DEPARTMENT OF TRANSPORTATION**

PLAN SHEET FAP 608 (IL 111)			
SCALE: 20	SHEET 1	OF 2 SHEETS	STA. 763+80 TO STA. 769+50

F.A.P. RTE.	SECTION	COUNTY	TOTAL SHEETS	SHEET NO.
608	(122) BDR	MACOUPIN	21	8
			CONTRACT NO. 72M28	
ILLINOIS FED. AID PROJECT				

BUTT JOINT DETAIL



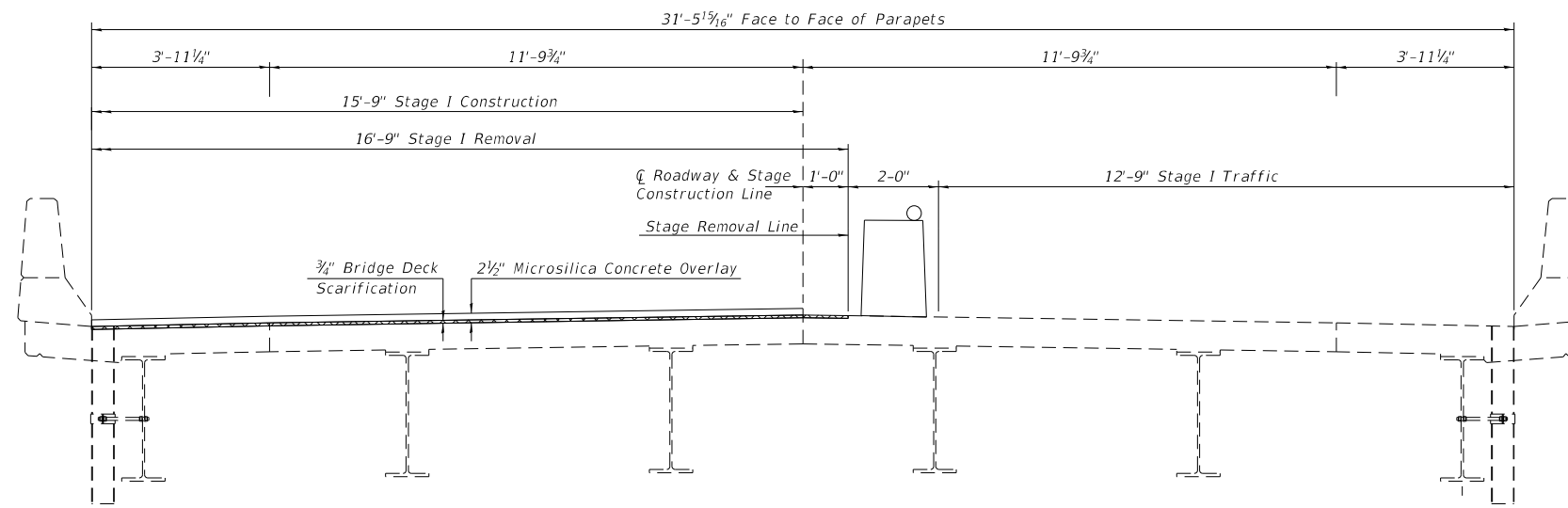
MODEL: D:\default...
 FILE: MainE...
 PROJECT: D:\Projects\DOT\Office\District...

USER NAME = milesra	DESIGNED -	REVISED -
PLOT SCALE = 40.0000' / in.	DRAWN -	REVISED -
PLOT DATE = 12/22/2021	CHECKED -	REVISED -
	DATE -	REVISED -

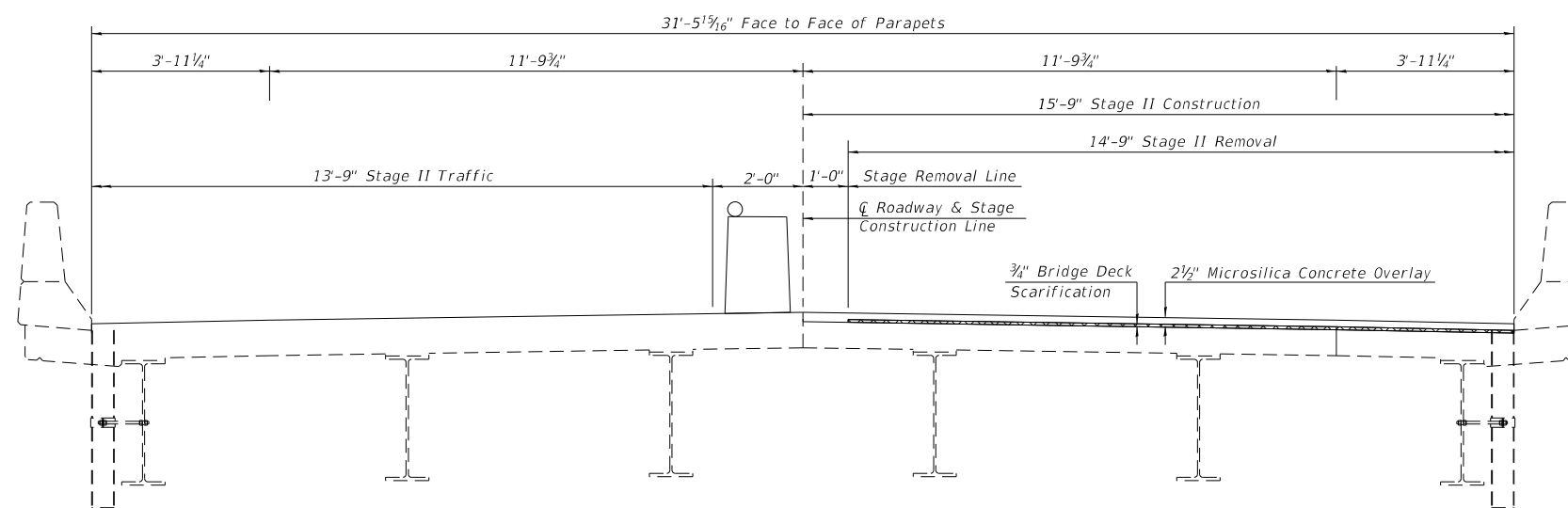
**STATE OF ILLINOIS
DEPARTMENT OF TRANSPORTATION**

PLAN SHEET		F.A.P. RTE.	SECTION	COUNTY	TOTAL SHEETS	SHEET NO.
FAP 608 (IL 111)		608	(122) BDR	MACOUPIN	21	9
SCALE: 20	SHEET 2	OF 2	SHEETS	STA. 769+50	TO STA. 775+80	

CONTRACT NO. 72M28		ILLINOIS FED. AID PROJECT	
--------------------	--	---------------------------	--



STAGE I TRAFFIC CONTROL TYPICAL SECTION
(Looking North)



STAGE II TRAFFIC CONTROL TYPICAL SECTION
(Looking North)

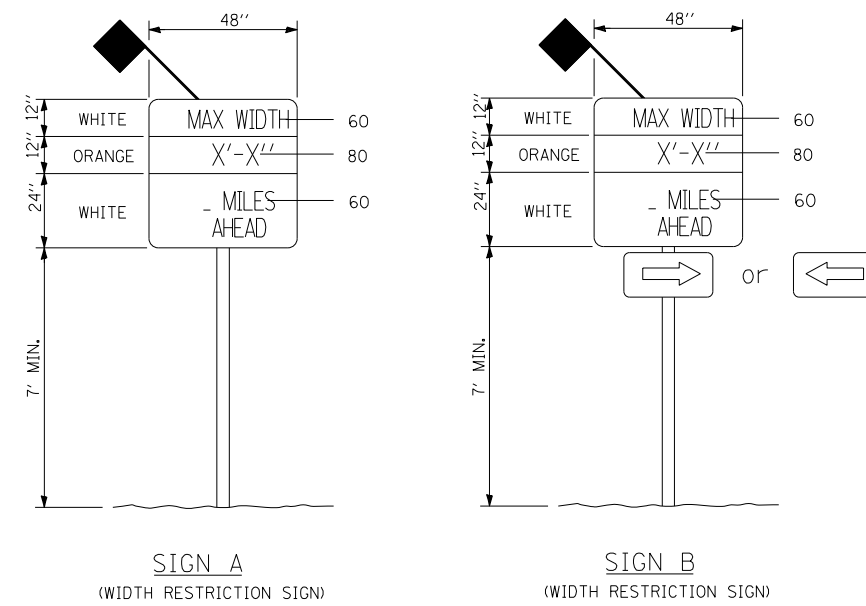
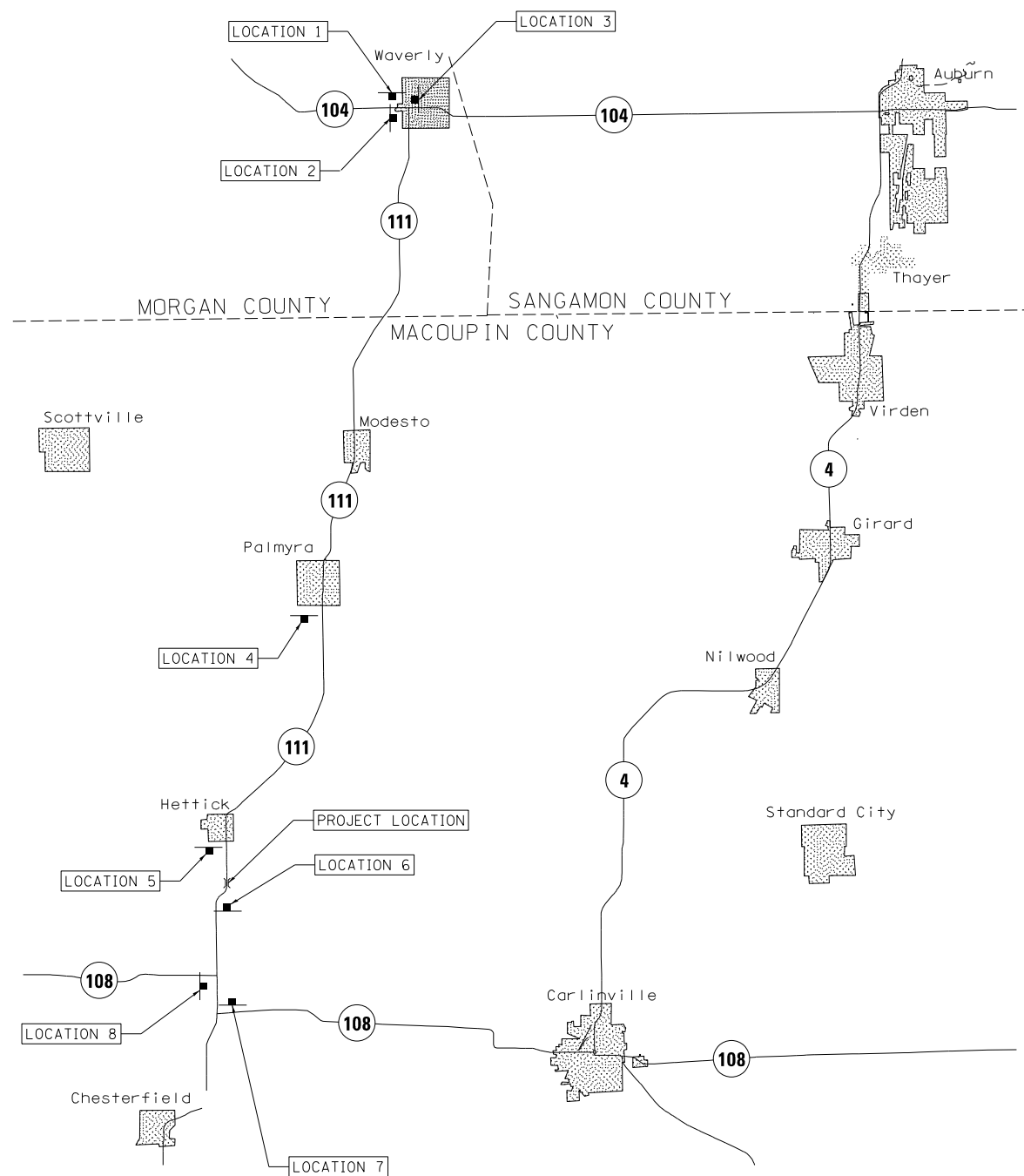
MODEL: Default
 FILE NAME: p:\bridge-sw-bentley.com\PROJECTS\DOT Offices\District 6\Projects\0672M28\CADD\BDR\0672M28-shc-staging1 Typical.dgn

USER NAME = milesra	DESIGNED -	REVISED -
	DRAWN -	REVISED -
PLOT SCALE = 2.0000' / in.	CHECKED -	REVISED -
PLOT DATE = 12/23/2021	DATE -	REVISED -

**STATE OF ILLINOIS
DEPARTMENT OF TRANSPORTATION**

STAGING TYPICAL SECTIONS			
FAP 608 (IL 111)			
SCALE: N/A	SHEET 1	OF 1 SHEETS	STA. N/A TO STA. N/A

F.A.P. RTE.	SECTION	COUNTY	TOTAL SHEETS	SHEET NO.
608	(122) BDR	MACOUPIN	21	10
CONTRACT NO. 72M28				
ILLINOIS FED. AID PROJECT				



	SIGN	
1 IL 111 SB AT IL 104	A	19 MILES
2 IL 104 EB AT IL 111	B	19 MILES
3 IL 104 WB AT IL 111	B	19 MILES
4 IL 111 SB AT SOUTH OF PALMYRA	A	6.8 MILES
5 IL 111 SB AT HETTICK RD	A	0.6 MILES
6 IL 111 NB AT CUMBERLAND RD	A	0.7 MILES
7 IL 111 NB AT IL 108	A	3.3 MILES
8 IL 108 EB AT IL 111	B	2.4 MILES

LOCATION DISTANCE

GENERAL NOTES:
 ACTUAL MAXIMUM WIDTHS ARE TO BE MEASURED BY THE ENGINEER AFTER TEMPORARY TRAFFIC CONTROL IS PLACED FOR STAGE 1. WIDTH SHALL BE REMEASURED AND SIGNS UPDATED FOR STAGE 2.
 MAXIMUM WIDTH SIGNS SHALL BE PAID FOR AS ONE LUMP SUM ITEM AS "WIDTH RESTRICTION SIGNING".
 ALL SIGNS SHALL BE POST MOUNTED IN ACCORDANCE WITH ARTICLE 701.14 OF THE STANDARD SPECIFICATIONS FOR ROAD AND BRIDGE CONSTRUCTION.

MODEL: Default
 FILE: MacE...
 PROJECT: ...

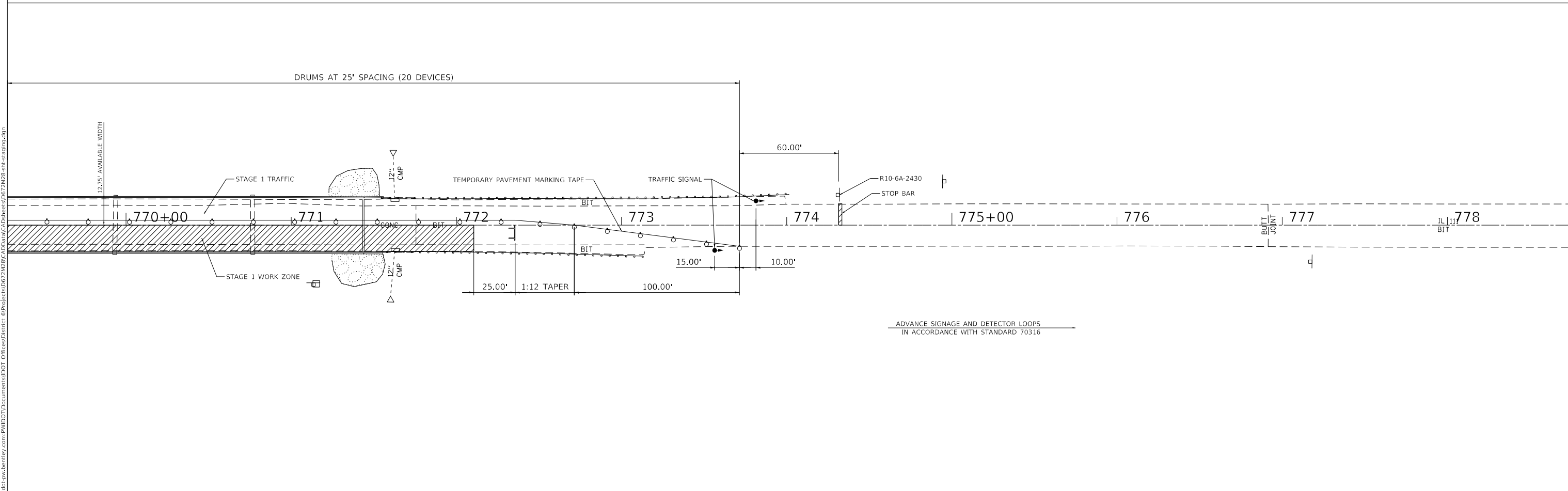
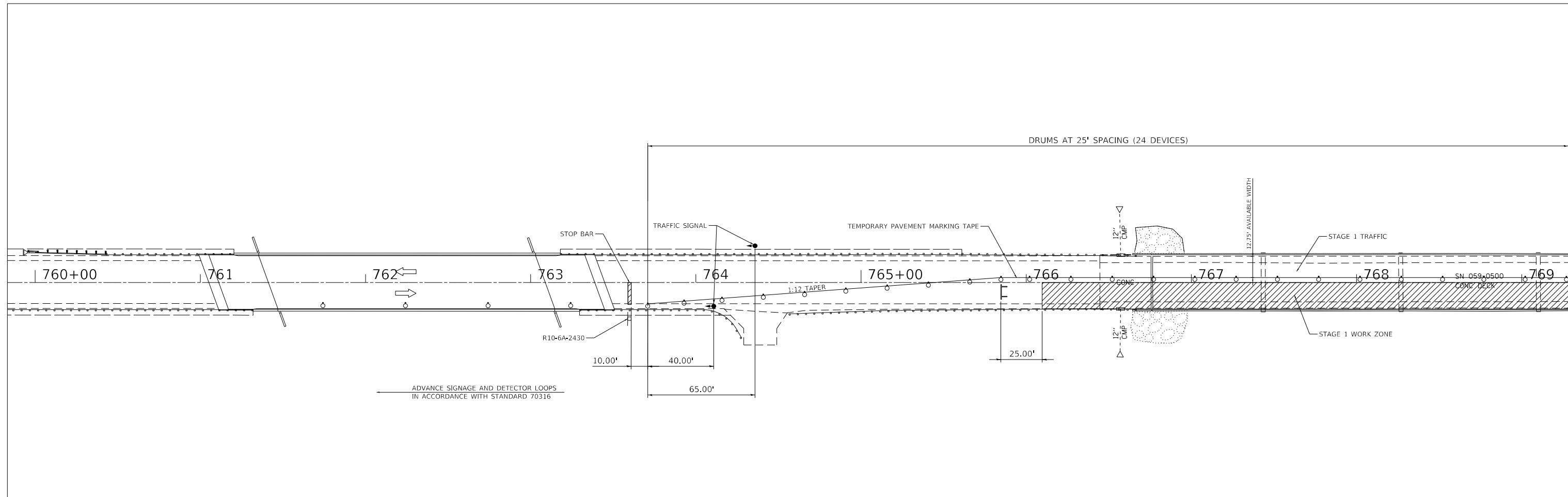


USER NAME = milesra	DESIGNED -	REVISED -
DRAWN -	REVISOR -	
PLOT SCALE = 60.0000' / in.	CHECKED -	REVISED -
PLOT DATE = 12/22/2021	DATE -	REVISED -

**STATE OF ILLINOIS
DEPARTMENT OF TRANSPORTATION**

WIDTH RESTRICTION SIGNING				
SCALE: N/A	SHEET 1	OF 1 SHEETS	STA. N/A	TO STA. N/A

F.A.P. RTE.	SECTION	COUNTY	TOTAL SHEETS	SHEET NO.
608	(122) BDR	MACOUPIN	21	11
			CONTRACT NO. 72M28	
ILLINOIS FED. AID PROJECT				



MODEL: Default
 FILE NAME: p:\11482-24\benlley.com\PHWDOT\Documents\DOT Offices\District 6\Projects\0672M28\CADD\Drawings\0672M28-sh-ctg-imp.dgn

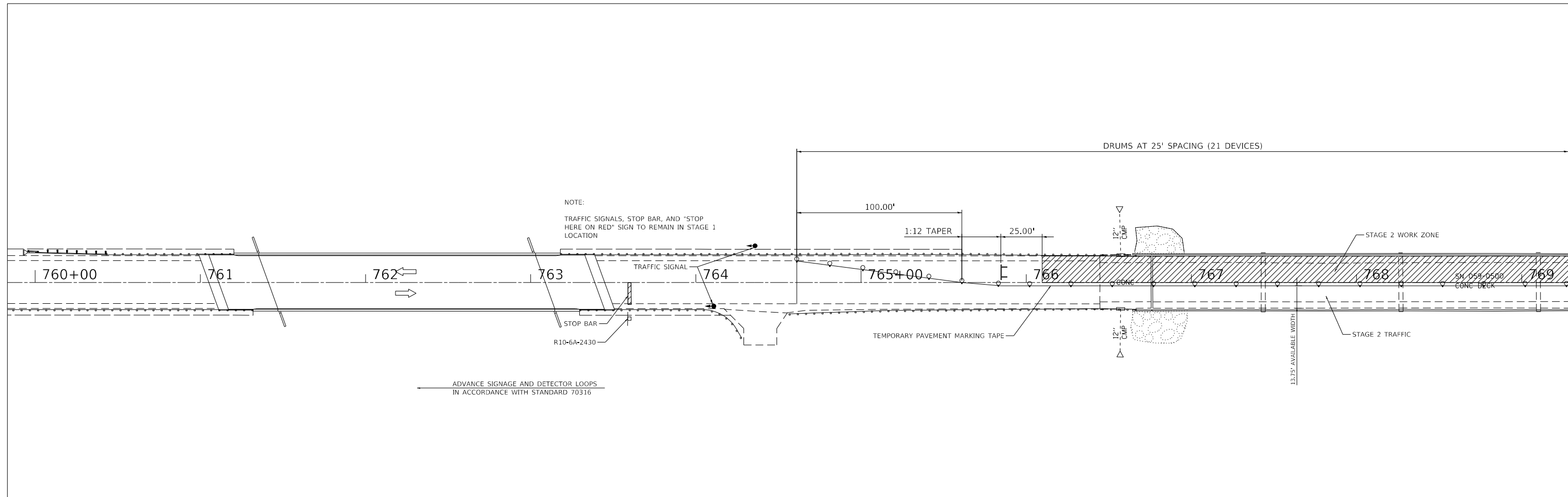
USER NAME = milesra	DESIGNED -	REVISED -
PLOT SCALE = 60.0000' / in.	DRAWN -	REVISED -
PLOT DATE = 12/22/2021	CHECKED -	REVISED -
	DATE -	REVISED -

**STATE OF ILLINOIS
DEPARTMENT OF TRANSPORTATION**

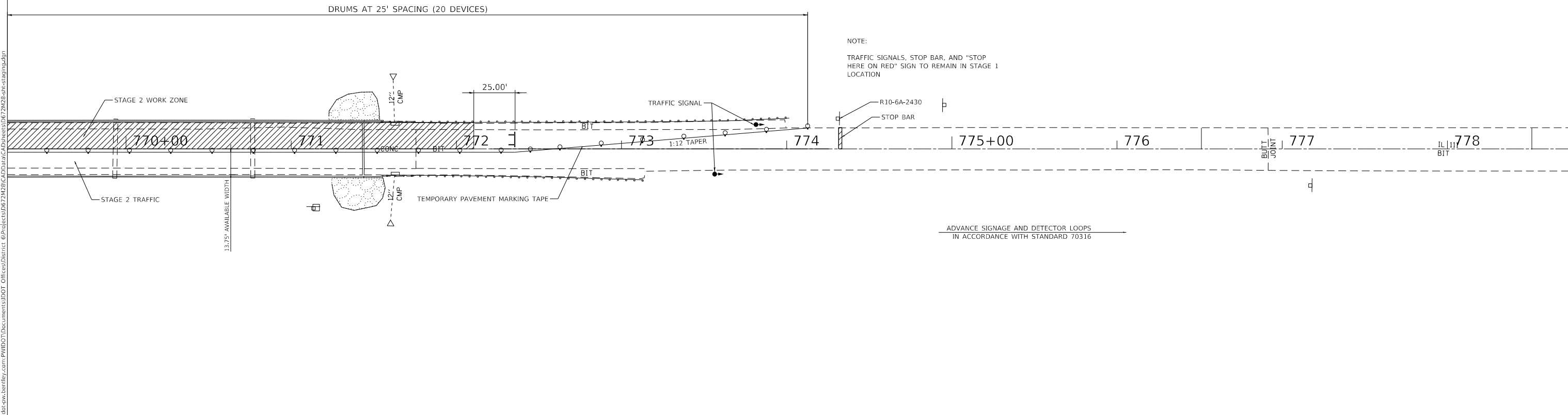
**TEMPORARY TRAFFIC CONTROL
STAGE 1**

SCALE: 30 SHEET 1 OF 2 SHEETS STA. 759+83 TO STA. 778+73

F.A.P. RTE.	SECTION	COUNTY	TOTAL SHEETS	SHEET NO.
608	(122) BDR	MACOUPIN	21	12
CONTRACT NO. 72M28				
ILLINOIS FED. AID PROJECT				



ADVANCE SIGNAGE AND DETECTOR LOOPS
IN ACCORDANCE WITH STANDARD 70316



NOTE:
TRAFFIC SIGNALS, STOP BAR, AND "STOP
HERE ON RED" SIGN TO REMAIN IN STAGE 1
LOCATION

ADVANCE SIGNAGE AND DETECTOR LOOPS
IN ACCORDANCE WITH STANDARD 70316

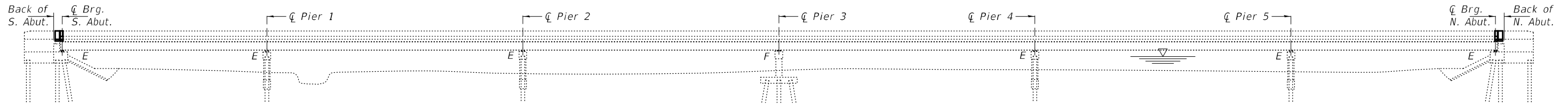
MODEL: Default
 FILE: MainE_Plan_11dbsw_bentley.com_PWDOT\Documents\DOT Offices\District 6\Projects\72M28\CADD\Drawings\72M28-shc-stage2.dgn

USER NAME = milesra	DESIGNED -	REVISED -
	DRAWN -	REVISED -
PLOT SCALE = 60.0000' / in.	CHECKED -	REVISED -
PLOT DATE = 12/22/2021	DATE -	REVISED -

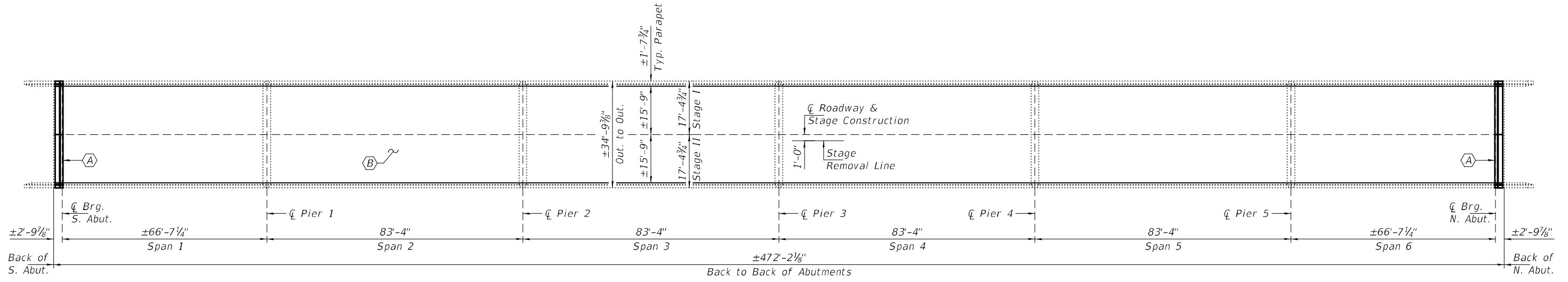
**STATE OF ILLINOIS
DEPARTMENT OF TRANSPORTATION**

TEMPORARY TRAFFIC CONTROL STAGE 2			
SCALE: 30	SHEET 2	OF 2 SHEETS	STA. 759+83 TO STA. 778+73

F.A.P. RTE.	SECTION	COUNTY	TOTAL SHEETS	SHEET NO.
608	(122) BDR	MACOUPIN	21	13
			CONTRACT NO. 72M28	
		ILLINOIS	FED. AID PROJECT	



ELEVATION



PLAN

GENERAL NOTES

Plan dimensions and details relative to existing plans are subject to nominal construction variations. The Contractor shall field verify existing dimensions and details affecting new construction and make necessary approved adjustments prior to construction or ordering of materials. Such variations shall not be cause for additional compensation for a change in scope of the work, however, the Contractor will be paid for the quantity actually furnished at the unit price bid for the work.

Reinforcement bars designated (E) shall be epoxy coated.

Existing reinforcement bars extending into the removal area shall be cleaned, straightened and incorporated into the new construction. Any reinforcement bars that are damaged during concrete removal shall be replaced with an approved bar splicer or anchorage system. Cost included with Concrete Removal.

Joint openings shall be adjusted according to Article 520.04 of the Std. Specs. when the deck is poured at an ambient temperature other than 50° F.

Areas of deck repairs shown are estimated. The Engineer shall show actual locations of deck repairs on As-built Plans.

Cleaning and painting existing steel as specified in the Special Provision for "Cleaning and Painting Existing Structures" and as specified below:

- Existing structural steel where shown on the plans shall be cleaned per requirements of near white blast cleaning (SPPC-SP-10).
- The cleaning areas of the structural steel shall be primed per the requirements of "Paint System 1-OZ/E/U."
- The color of the final finish coat shall be Gray, Munsell No. 5B 7/1.
- The SPPC-QP1 Certification will be required for this project.
- A minimum of one (1) high volume air monitor will be required to monitor air quality during dust operation, Special Provisions.
- Containment and Disposal of paint residues shall be as specified by the Special Provisions "Containment and Disposal of Non-Lead Cleaning Residues."

SCOPE OF WORK

- (A) - Expansion Joint Removal & Replacement
- (B) - Bridge Deck Scarification, 3/4" and New Microsilica Concrete Overlay, 2 1/2" on all spans.
- (C) - Bridge Deck Patching. See sheet 6 of 8.
- (D) - Substructure Repair at Abutments. See sheet 7 of 8.
- (E) - Clean and Paint Beam Ends. (Locations and extent as indicated in the Special Provisions.)

TOTAL BILL OF MATERIAL

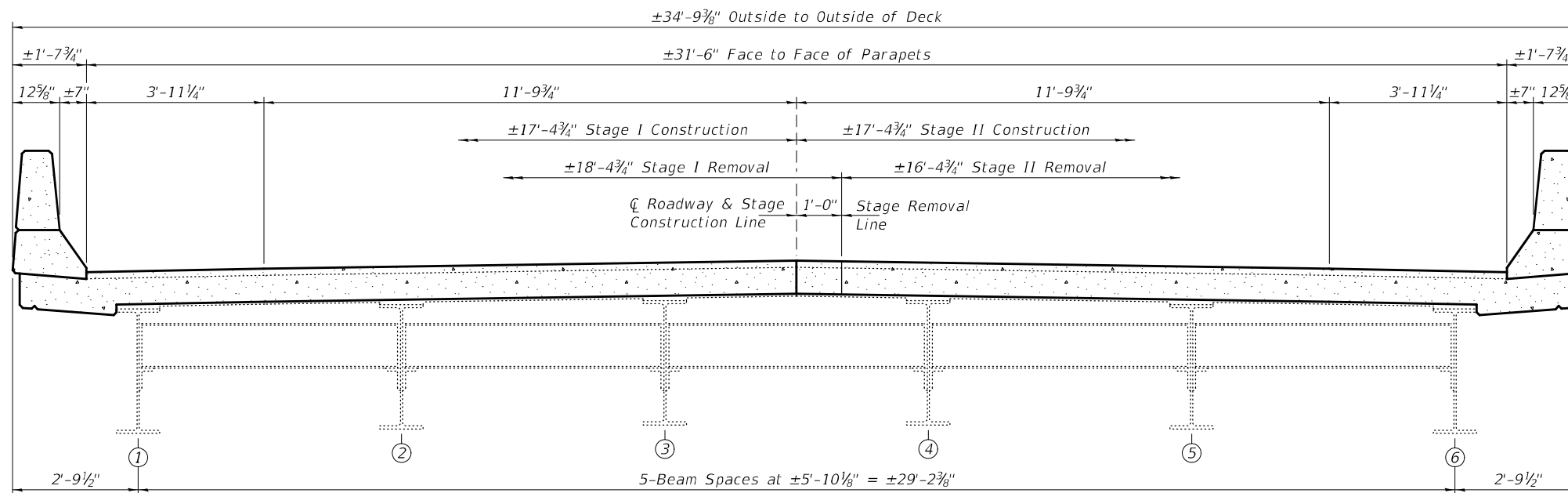
ITEM	UNIT	QUANTITY
Concrete Removal	Cu. Yd.	4.0
Concrete Superstructure	Cu. Yd.	5.4
Reinforcement Bars, Epoxy Coated	Pound	400
Bar Splicers	Each	8
Preformed Joint Strip Seal	Foot	68
Bridge Deck Scarification, 3/4"	Sq. Yd.	1223
Bridge Deck Microsilica Concrete Overlay, 2 1/2"	Sq. Yd.	1223
Bridge Deck Grooving	Sq. Yd.	1202
Structural Repair of Concrete (Depth ≤ 5")	Sq. Ft.	35
Deck Slab Repair (Partial Depth)	Sq. Yd.	253.4
Cleaning and Painting Steel Bridge No. 1	L.S.	1
Containment and Disposal of Non-Paint Cleaning Residues No. 1	L.S.	1
* Protective Coat	Sq. Yd.	1241
** Approach Slab Repair (Partial Depth)	Sq. Yd.	2.5

* On new Parapet concrete and Microsilica Concrete Overlay only.
 ** For Information Only.

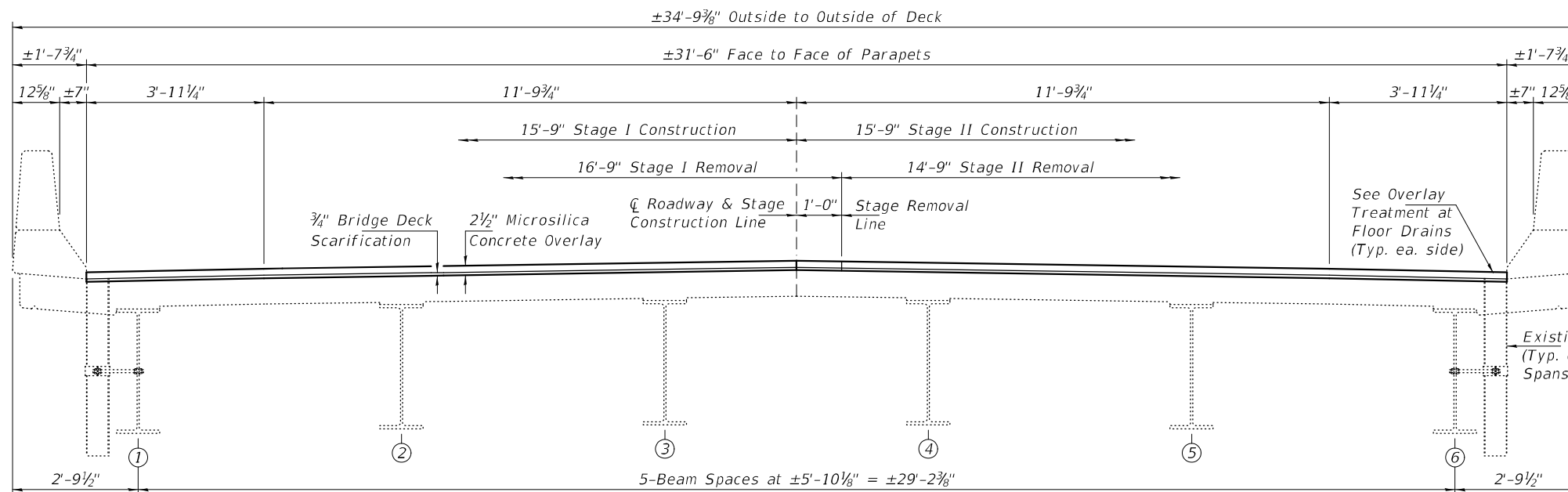


Expires: November 30, 2022

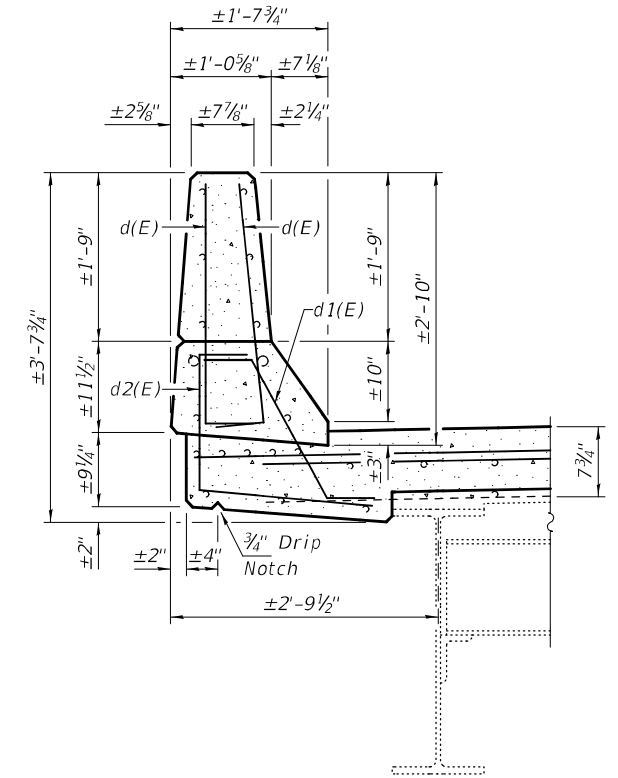
DESIGNED - Stephen M. Ryan	EXAMINED - <i>Trig A. Beck</i>	DATE - JANUARY 24, 2022	STATE OF ILLINOIS DEPARTMENT OF TRANSPORTATION		GENERAL PLAN AND ELEVATION ILLINOIS ROUTE 111 OVER OTTER CREEK OVERFLOW SN 059-0500		F.A.P. RTE. 608	SECTION (122)BDR	COUNTY MACOUPIN	TOTAL SHEETS 21	SHEET NO. 14
CHECKED - Victor H. Veliz	PASSED - <i>David Carl Puzev</i>	REVISIONS					SHEET NO. 1 OF 8 SHEETS		CONTRACT NO. 72M28		ILLINOIS FED. AID PROJECT
DRAWN - STEFFEN	ENGINEER OF BRIDGES AND STRUCTURES	REVISIONS									
CHECKED - SMR VHV	ENGINEER OF BRIDGES AND STRUCTURES	REVISIONS									



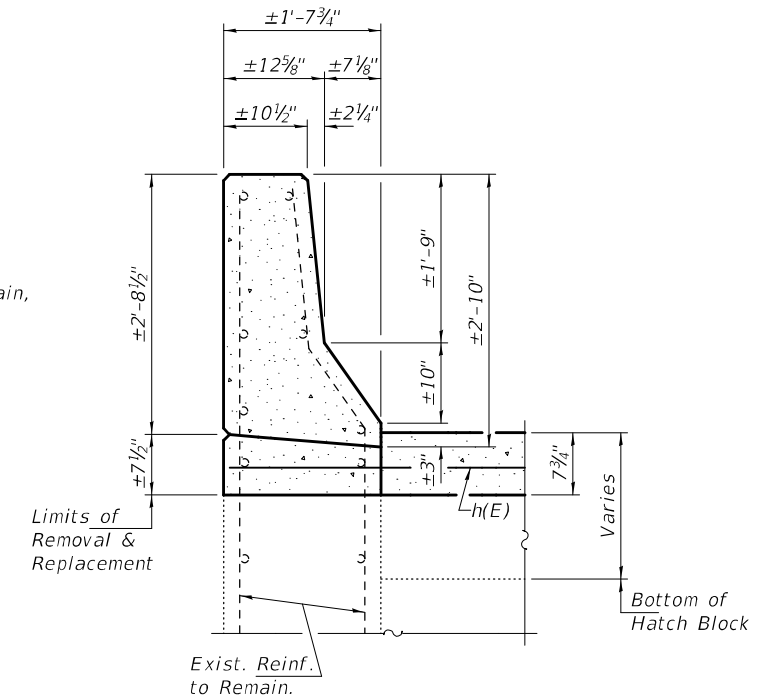
CROSS SECTION THRU BRIDGE DECK AT ABUTMENTS
(Looking North)



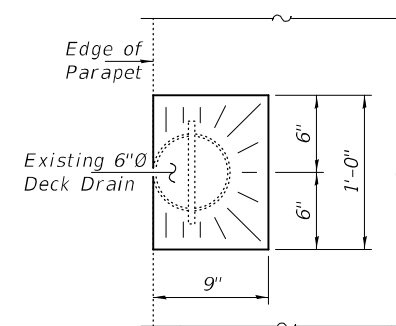
CROSS SECTION THRU BRIDGE DECK AT MID-SPAN
(Looking North)



BRIDGE DECK PARAPET



APPROACH PARAPET



OVERLAY TREATMENT AT FLOOR DRAINS

DESIGNED - SMR
CHECKED - VHV
DRAWN - STEFFEN
CHECKED - SMR VHV

EXAMINED
PASSED
Timothy A. Doolittle
ENGINEER OF STRUCTURAL SERVICES
Carl R. Ruppel
ENGINEER OF BRIDGES AND STRUCTURES

DATE - JANUARY 24, 2022
REVISED -
REVISED -

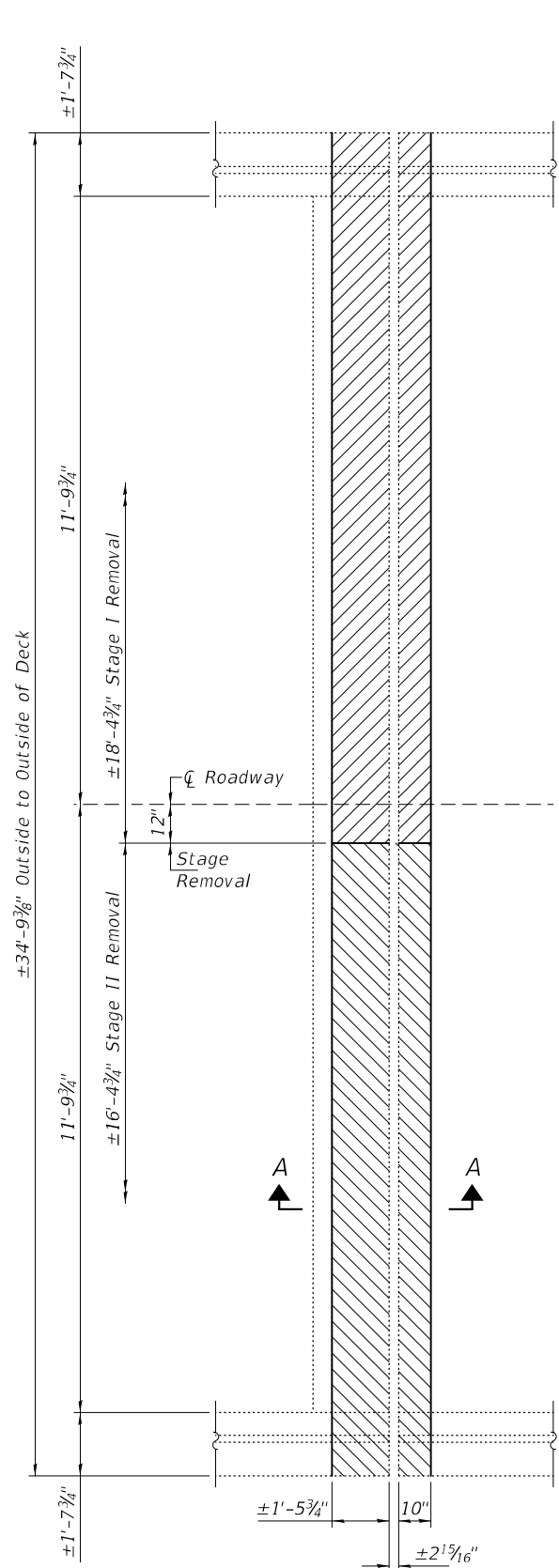
STATE OF ILLINOIS
DEPARTMENT OF TRANSPORTATION

STAGING & PARAPET DETAILS
SN 059-0500

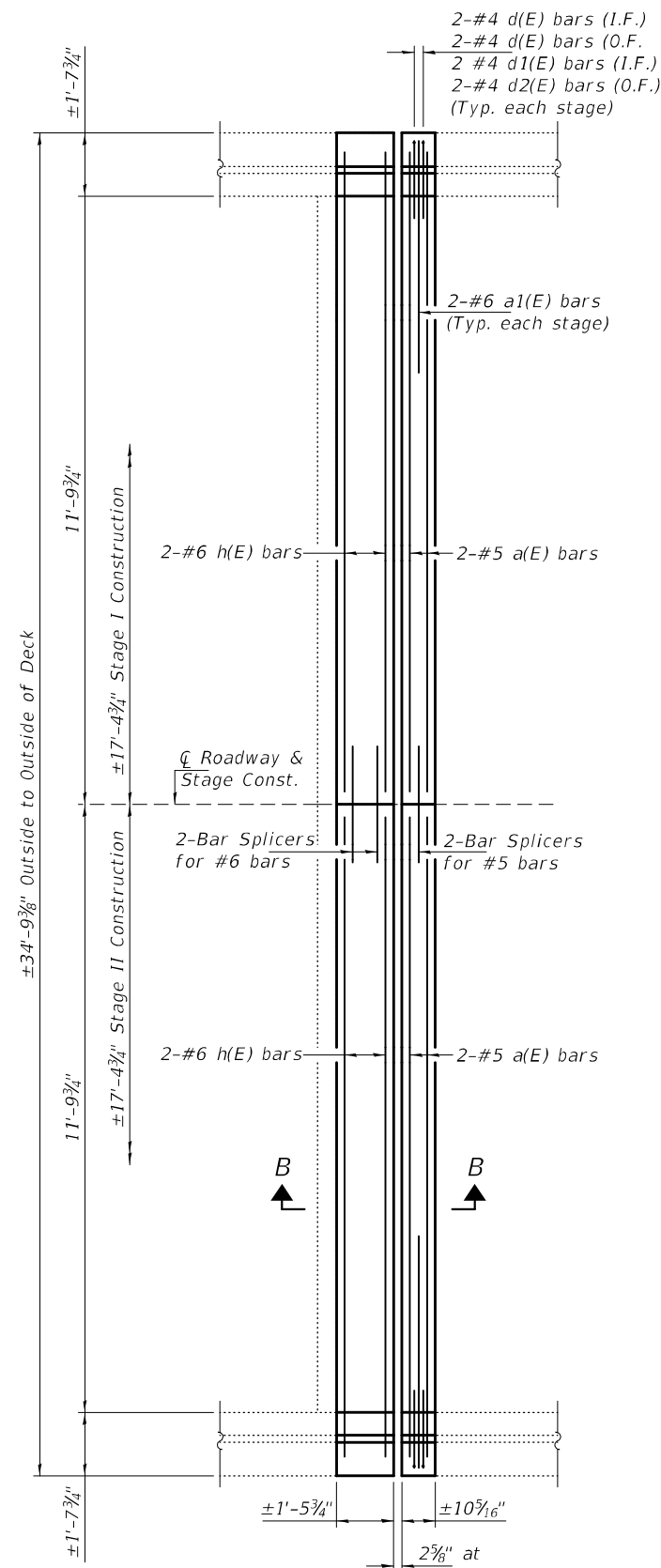
SHEET NO. 2 OF 8 SHEETS

F.A.P. RTE.	SECTION	COUNTY	TOTAL SHEETS	SHEET NO.
608	(122)BDR	MACOUPIN	21	15
CONTRACT NO. 72M28				

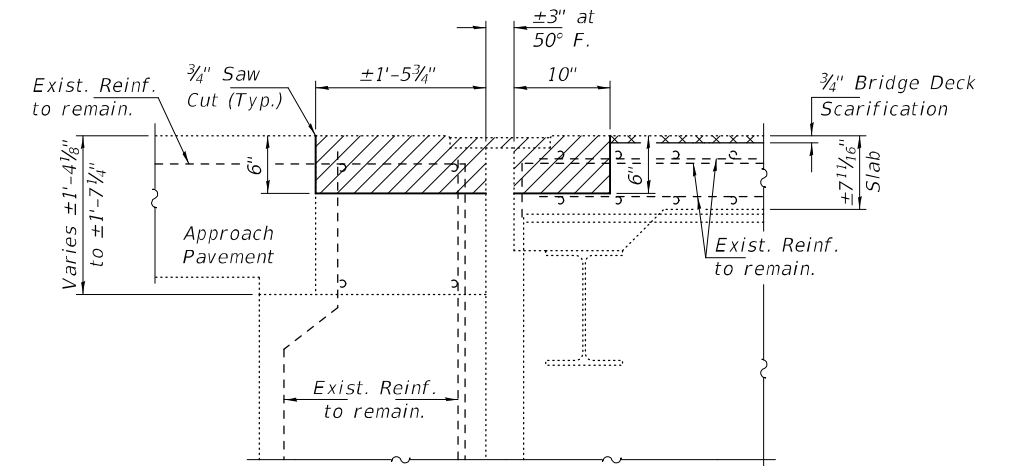
ILLINOIS FED. AID PROJECT



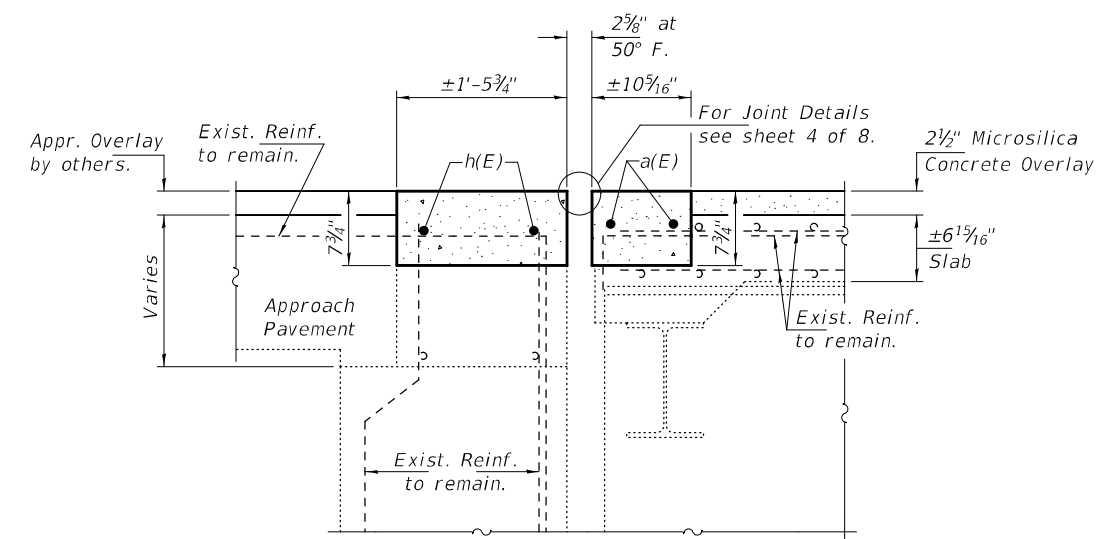
CONCRETE REMOVAL PLAN
(S. Abut. shown, N. Abut. similar by rotation.)



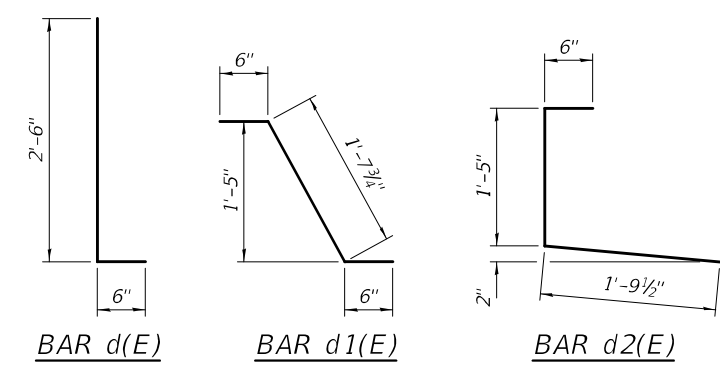
CONCRETE REPLACEMENT PLAN
(S. Abut. shown, N. Abut. similar by rotation.)



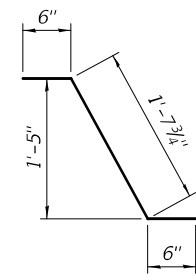
SECTION A-A



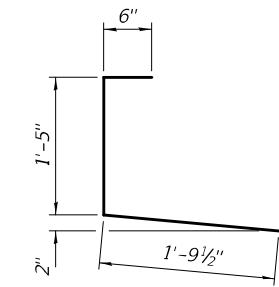
SECTION B-B



BAR d(E)



BAR d1(E)



BAR d2(E)

BILL OF MATERIAL

Bar	No.	Size	Length	Shape
a(E)	8	#5	12'-9"	—
a1(E)	8	#6	6'-0"	—
d(E)	16	#4	3'-0"	┌
d1(E)	8	#4	2'-8"	┌
d2(E)	8	#4	3'-9"	┌
h(E)	8	#6	13'-1"	—
Concrete Removal			Cu. Yd.	4.0
Concrete Superstructure			Cu. Yd.	5.4
Bar Splicers			Each	8
Reinforcement Bars, Epoxy Coated			Pound	400

Note:
Hatched areas indicate Concrete Removal.
For Parapet Details see sheet 2 of 8.

DRAFT
DATE: 07-01-2021

Notes:

The strip seal shall be made continuous and shall have a minimum thickness of 1/4". The configuration of the strip seal shall match the configuration of the locking edge rails. Open or "webbed" strip seal gland configurations are not permitted. The gland shall be sized for a maximum rated movement of 4 inches.

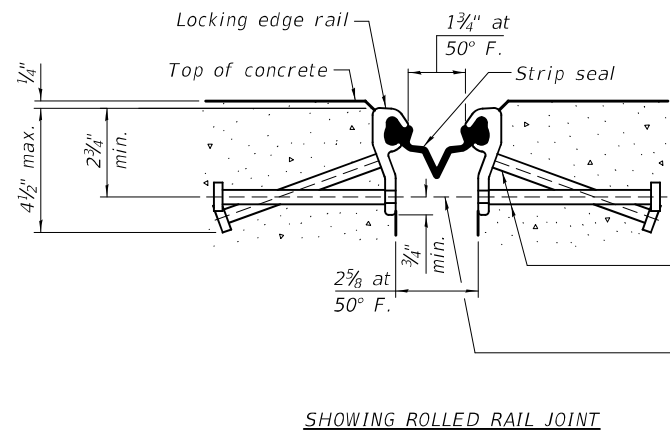
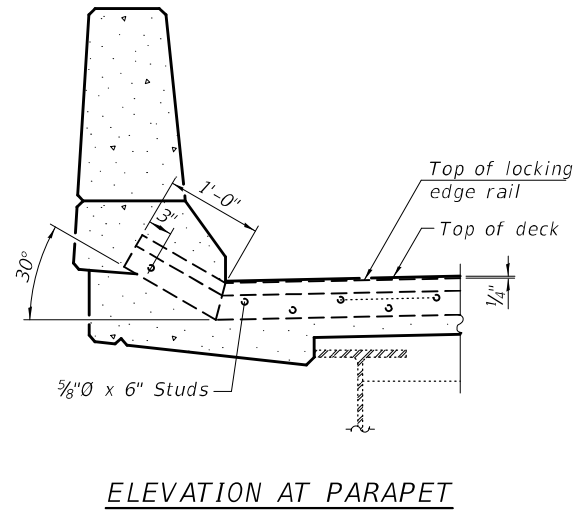
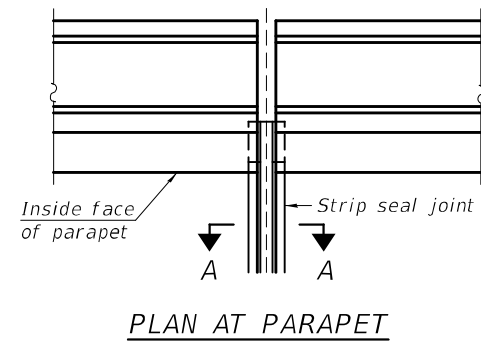
The locking edge rails depicted are configured for typical applications and are conceptual only. The actual configuration of the locking edge rails and matching strip seal may vary from manufacturer to manufacturer provided they fit the application and meet the minimum anchorage shown. Flanged edge rails, however, will not be allowed. Locking edge rails may exceed the 4 1/2" maximum depth provided the anchorage system is revised according to the manufacturer's recommendation.

The manufacturer's recommended installation methods shall be followed.

All steel components shall be galvanized after fabrication according to Article 520.03 of the Standard Specifications.

The Maximum space between locking edge rail segments shall be 3/16" and sealed with a suitable sealant; however, any rail joint within 10' measured perpendicular to the face of the curb or parapet shall be welded as shown in the locking edge rail splice detail.

The concrete opening below the strip seal will vary based on the locking edge rail chosen by the Contractor. Deck and parapet lengths shown elsewhere in the plans are dimensioned to the concrete opening, not the joint opening, and are based on the rolled locking edge rail. If the Contractor elects to use a different locking edge rail, dimensional adjustments may be required. One exception to this would be the strip seal joint at the end of the precast bridge approach slab. For these cases the pavement connector length shall be adjusted, not the length of the bridge approach slab.

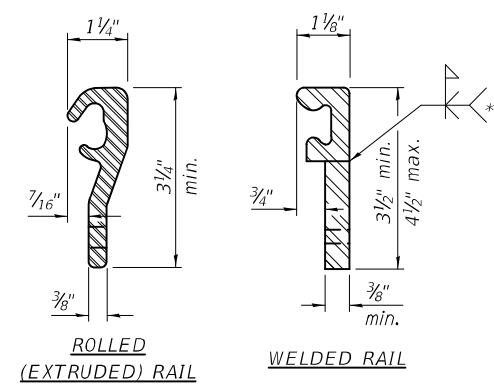
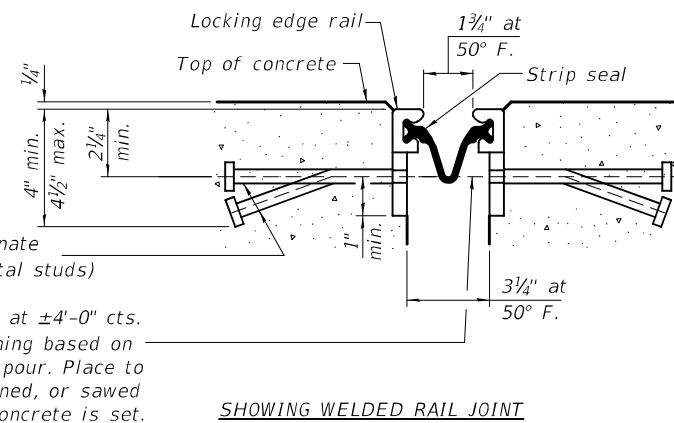


* 5/8" Ø x 6" studs at 6" cts. (alternate angled/bent studs with horizontal studs)

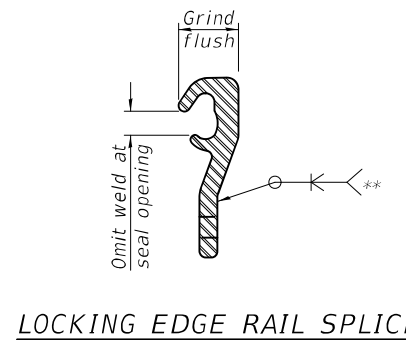
3/8" Ø threaded rods in 7/16" Ø holes at ±4'-0" cts. for holding the proper joint opening based on the temperature during the deck pour. Place to miss studs. All rods shall be burned, or sawed off flush with the plates after concrete is set.

SECTION A-A

* Granular or solid flux filled headed studs conforming to Article 1006.32 of the Std. Specs., automatically end welded.



** Back gouge not required if complete joint penetration is verified by mock-up.



The inside of the locking edge rail groove shall be free of weld residue. Rolled rail shown, welded rail similar.

BILL OF MATERIAL

Item	Unit	Total
Preformed Joint Strip Seal	Foot	68

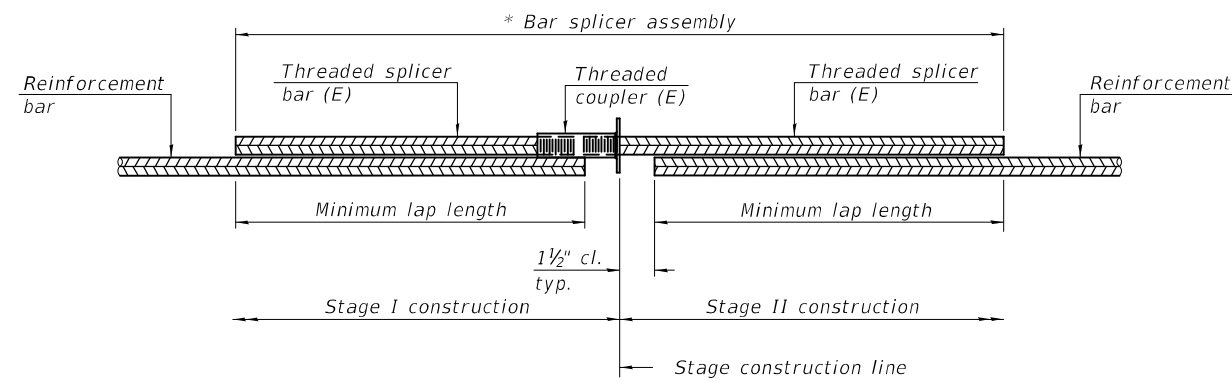
DESIGNED - SMR	EXAMINED - <i>Timothy A. Daulton</i>	DATE - JANUARY 24, 2022
CHECKED - VHV	ENGINEER OF STRUCTURAL SERVICES	
DRAWN - STEFFEN	PASSED - <i>Carl Rieger</i>	REVISED -
CHECKED - SMR VHV	ENGINEER OF BRIDGES AND STRUCTURES	REVISED -

STATE OF ILLINOIS
DEPARTMENT OF TRANSPORTATION

PREFORMED JOINT STRIP SEAL DETAILS
SN 059-0500

SHEET NO. 4 OF 8 SHEETS

F.A.P. RTE.	SECTION	COUNTY	TOTAL SHEETS	SHEET NO.
608	(122)BDR	MACOUPIN	21	17
			CONTRACT NO. 72M28	
ILLINOIS FED. AID PROJECT				

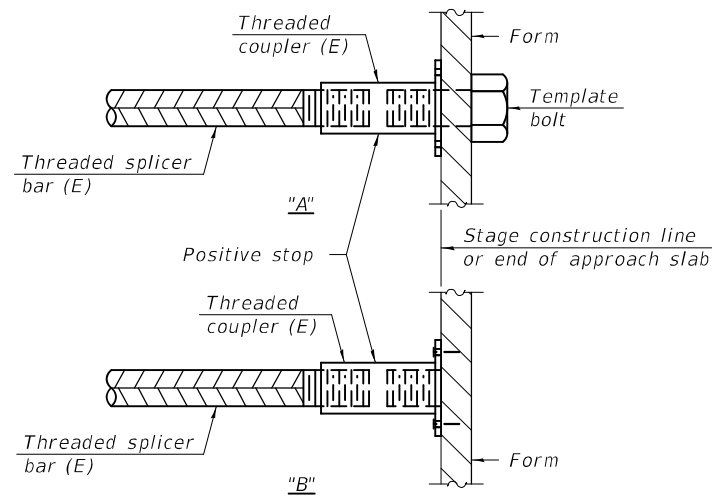


STANDARD BAR SPLICER ASSEMBLY PLAN
(All components shall be provided from one supplier)

Threaded splicer bar length = min. lap length + 1 1/2" + thread length

* Epoxy not required on Bar Splicer Assembly components used in conjunction with black bars.

Location	Bar size	No. assemblies required	Minimum lap length
Deck	#5	4	3'-6"
Hatch Block	#6	4	4'-10"

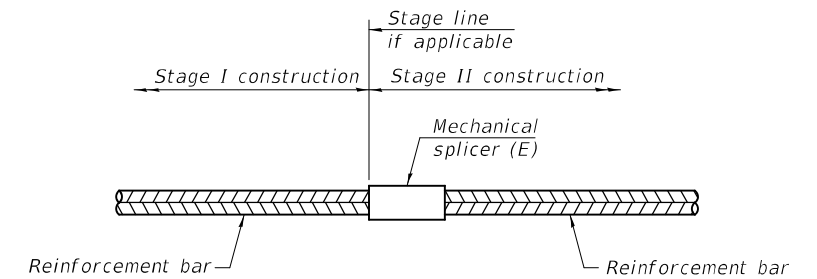


INSTALLATION AND SETTING METHODS

"A" : Set bar splicer assembly by means of a template bolt.

"B" : Set bar splicer assembly by nailing to wood forms or cementing to steel forms.

(E) : Indicates epoxy coating.



STANDARD MECHANICAL SPLICER

Location	Bar size	No. assemblies required

Notes:

Splicer bars shall be deformed with threaded ends and have a minimum 60 ksi yield strength.

All reinforcement shall be lapped and tied to the splicer bars.

Bar splicer assemblies shall be epoxy coated according to the requirements for reinforcement bars. See Section 508 of the Standard Specifications.

See approved list of bar splicer assemblies and mechanical splicers for alternatives.

BSD-1

1-1-2020

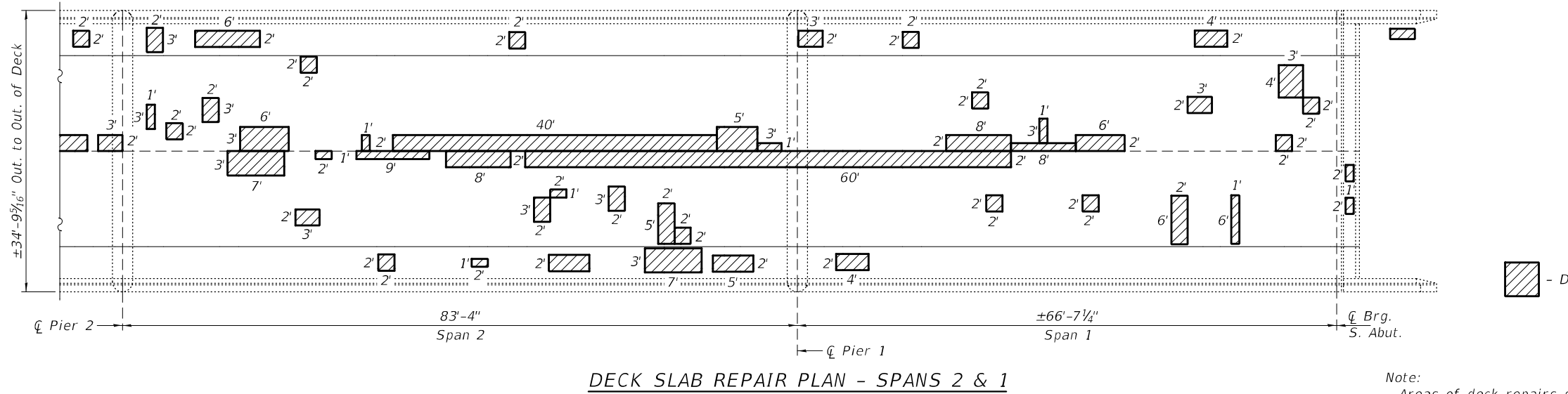
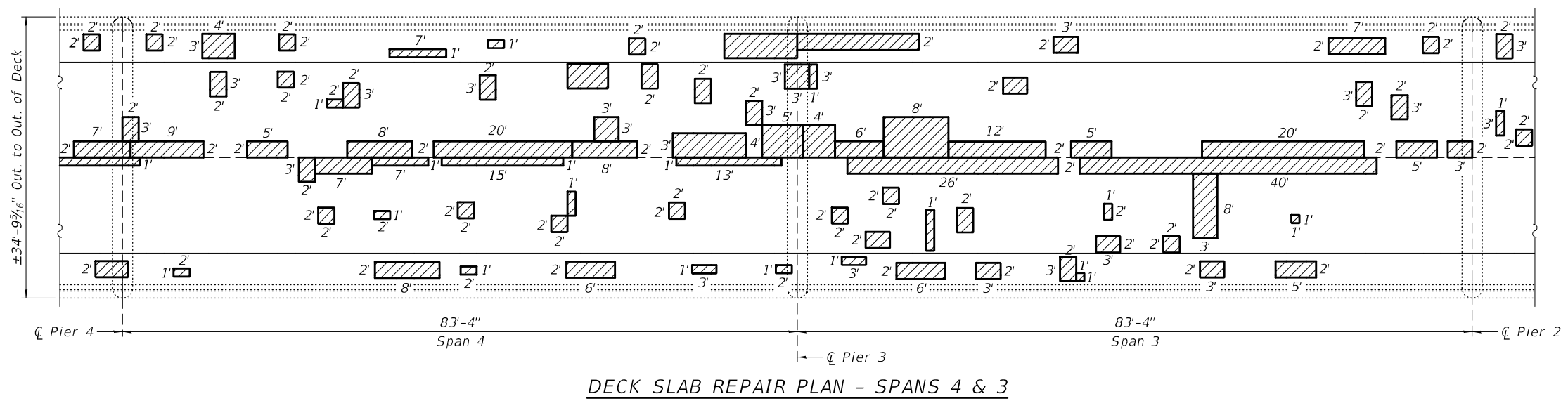
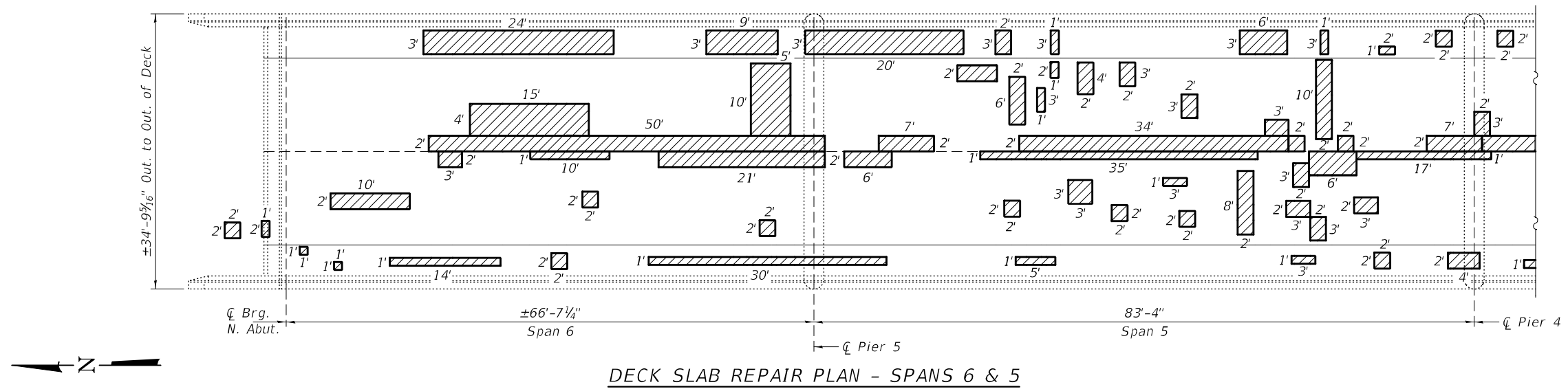
DESIGNED - SMR	EXAMINED	DATE - JANUARY 24, 2022
CHECKED - VHV	<i>Timothy A. Andujar</i> ENGINEER OF STRUCTURAL SERVICES	REVISED -
DRAWN - STEFFEN	PASSED	REVISED -
CHECKED - SMR VHV	<i>Carl Rieger</i> ENGINEER OF BRIDGES AND STRUCTURES	

**STATE OF ILLINOIS
DEPARTMENT OF TRANSPORTATION**

BAR SPLICER ASSEMBLY & MECHANICAL SPLICER DETAILS
SN 059-0500

SHEET NO. 5 OF 8 SHEETS

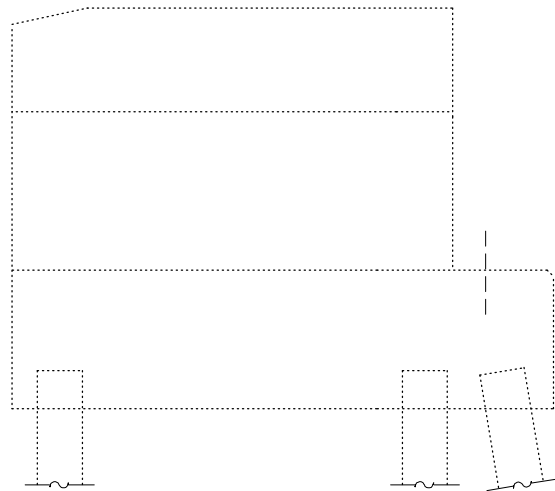
F.A.P. RTE. 608	SECTION (122)BDR	COUNTY MACOUPIN	TOTAL SHEETS 21	SHEET NO. 18
CONTRACT NO. 72M28			ILLINOIS FED. AID PROJECT	



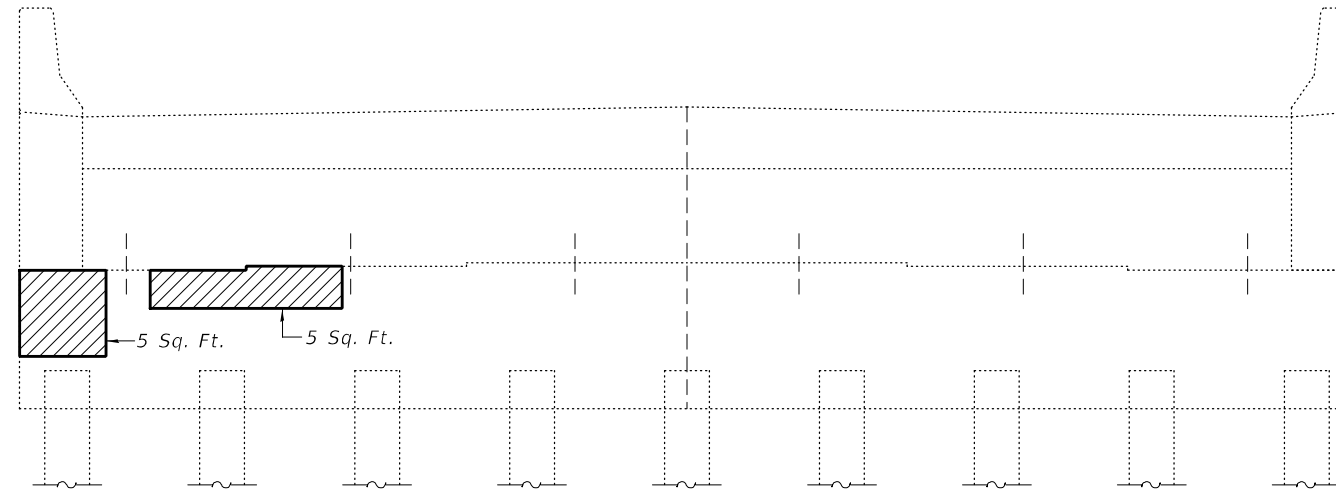
- Deck Slab Repair (Partial Depth)

Note:
Areas of deck repairs shown are estimated. The Engineer shall show actual locations of deck repairs on As-built Plans.

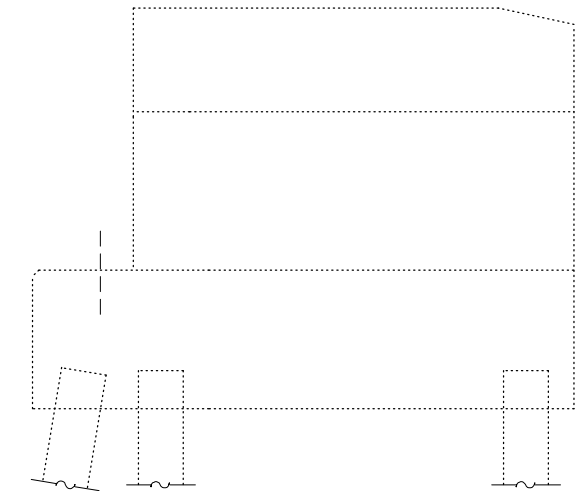
DESIGNED - SMR	EXAMINED -	DATE - JANUARY 24, 2022	STATE OF ILLINOIS DEPARTMENT OF TRANSPORTATION	DECK SLAB REPAIR DETAILS SN 059-0500	F.A.P. RTE. 608	SECTION (122)BDR	COUNTY MACOUPIN	TOTAL SHEETS 21	SHEET NO. 19
CHECKED - VHV	PASSED -	REVISED -							
DRAWN - STEFFEN	ENGINEER OF BRIDGES AND STRUCTURES	REVISED -							
CHECKED - SMR VHV	ENGINEER OF BRIDGES AND STRUCTURES								
					SHEET NO. 6 OF 8 SHEETS				
					ILLINOIS FED. AID PROJECT				



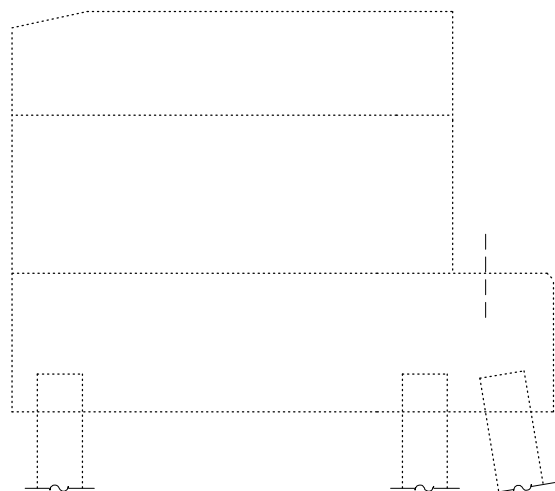
NORTH ABUTMENT - WEST WINGWALL
(Looking East)



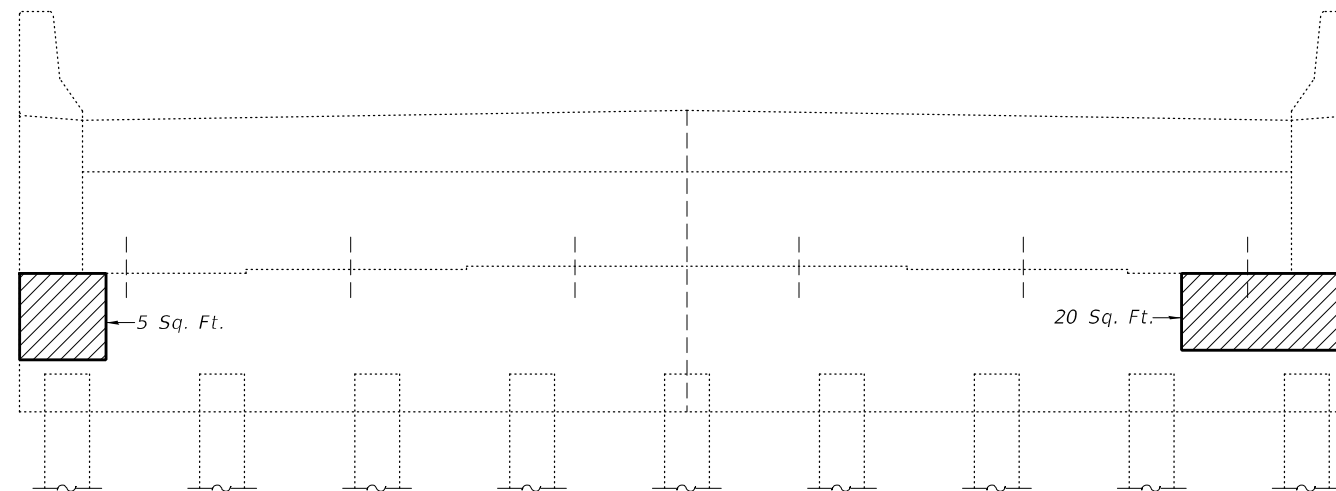
NORTH ABUTMENT - ELEVATION
(Looking North)



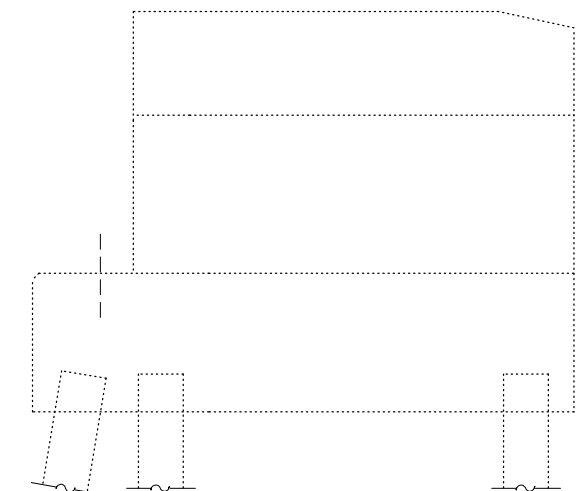
NORTH ABUTMENT - EAST WINGWALL
(Looking West)



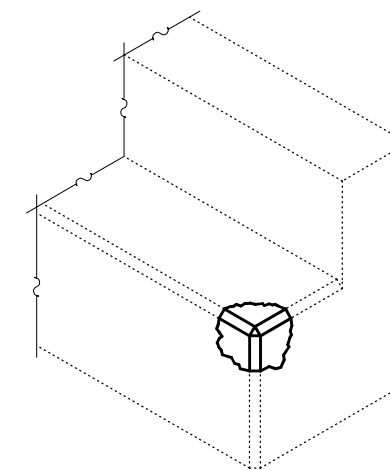
SOUTH ABUTMENT - EAST WINGWALL
(Looking West)




SOUTH ABUTMENT - ELEVATION
(Looking South)



SOUTH ABUTMENT - WEST WINGWALL
(Looking East)



S. ABUT. - S.W. CORNER - ISOMETRIC VIEW

 - Structural Repair of Concrete \leq 5 inches.

DESIGNED - SMR
CHECKED - VHV
DRAWN - STEFFEN
CHECKED - SMR VHV

EXAMINED
PASSED
Timothy A. Daulton
ENGINEER OF STRUCTURAL SERVICES
Carl Ringer
ENGINEER OF BRIDGES AND STRUCTURES

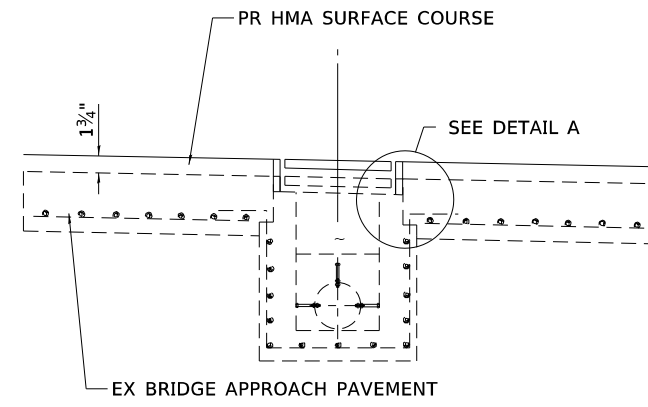
DATE - JANUARY 24, 2022
REVISED -
REVISED -

STATE OF ILLINOIS
DEPARTMENT OF TRANSPORTATION

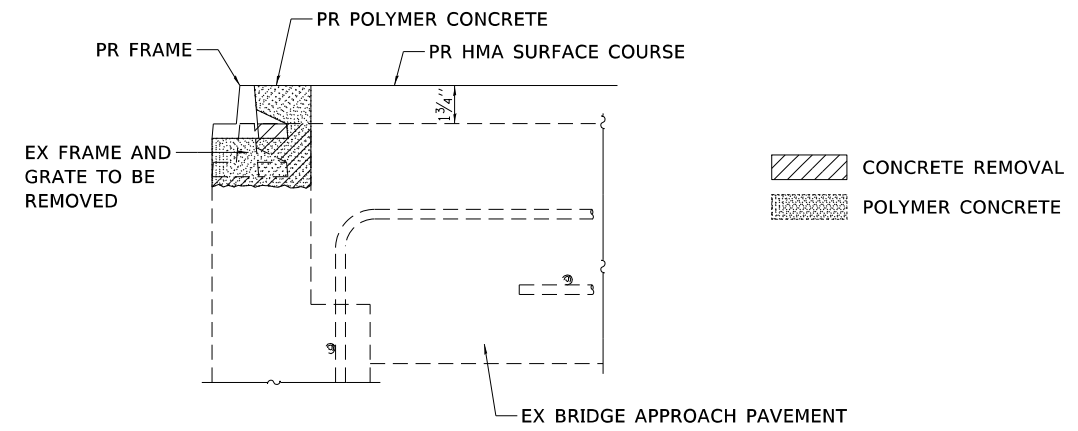
ABUTMENT SUBSTRUCTURE REPAIR DETAILS
SN 059-0500

SHEET NO. 7 OF 8 SHEETS

F.A.P. RTE.	SECTION	COUNTY	TOTAL SHEETS	SHEET NO.
608	(122)BDR	MACOUPIN	21	20
CONTRACT NO. 72M28				
ILLINOIS		FED. AID PROJECT		



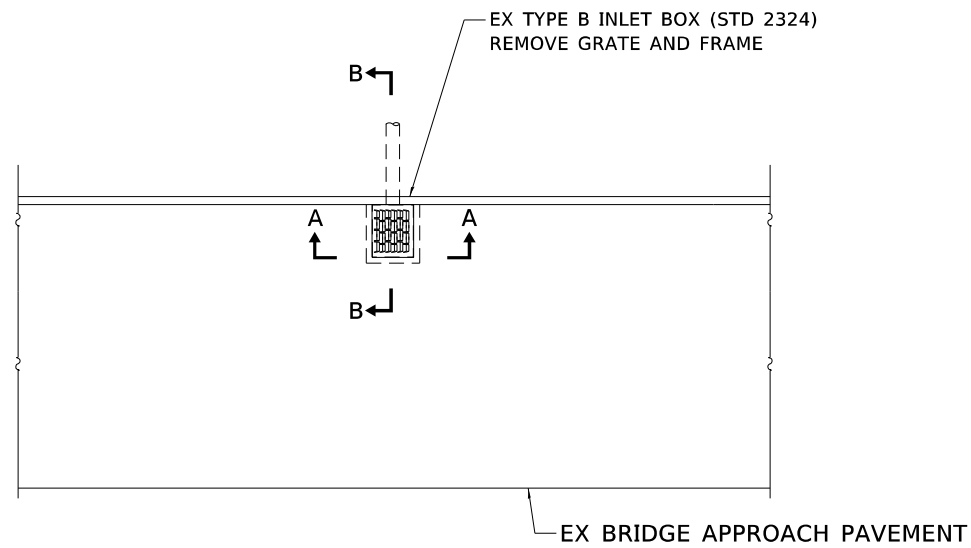
SEC A-A



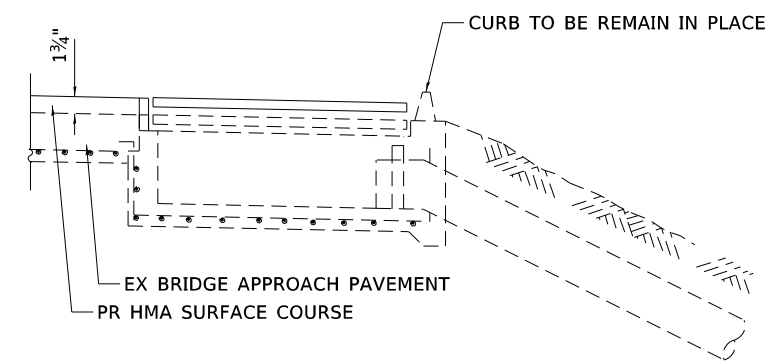
DETAIL A

GENERAL NOTES

THE CONTRACTOR SHALL FURNISH AND INSTALL A NEW CAST FRAME AND CAST GRATE AS SPECIFIED ON STANDARD 610001 FOR THE TYPE G INLET BOX



PLAN



SEC B-B

**STATE OF ILLINOIS
DEPARTMENT OF TRANSPORTATION**

**INLET TO BE ADJUSTED WITH NEW
FRAME AND GRATE (SPECIAL) DETAIL**

USER NAME = milesra	DESIGNED -	REVISED -
	DRAWN -	REVISED -
PLOT SCALE = 40.0000 ' / in.	CHECKED -	REVISED -
PLOT DATE = 1/31/2022	DATE -	REVISED -

SCALE: N/A SHEET 1 OF 1 SHEETS STA. N/A TO STA. N/A

F.A.P. RTE.	SECTION	COUNTY	TOTAL SHEETS	SHEET NO.
608	(122) BDR	MACOUPIN	21	21
ILLINOIS FED. AID PROJECT			CONTRACT NO. 72M28	