

STATE OF ILLINOIS
DEPARTMENT OF TRANSPORTATION
DIVISION OF HIGHWAYS

**PROPOSED
HIGHWAY PLANS**

FAP ROUTE 758 (ILL 32)
SECTION 3RS-5,(4,5)RS-3
PROJECT STP-R8QT(612)
SMART OVERLAY
MOULTRIE COUNTY

C-97-111-20

F.A.P. RTE.	SECTION	COUNTY	TOTAL SHEETS	SHEET NO.
758	3RS-5,(4,5)RS-3	Moultrie	21	1
		ILLINOIS	CONTRACT NO. 74A22	

D-97-105-20



FOR INDEX OF SHEETS, SEE SHEET NO. 2

ADT = 1850(2019)

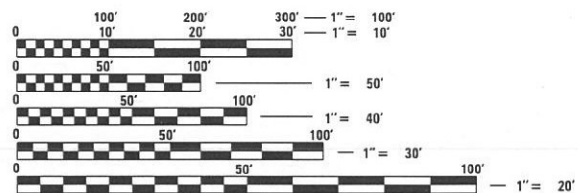
BRIDGE OMISSION
STA 68+15.6 TO
STA 68+40.4

PROJECT BEGINS
STA 0+35

STATION EQUATION
STA 285+99.7 (BK) =
STA 284+64 (AH)

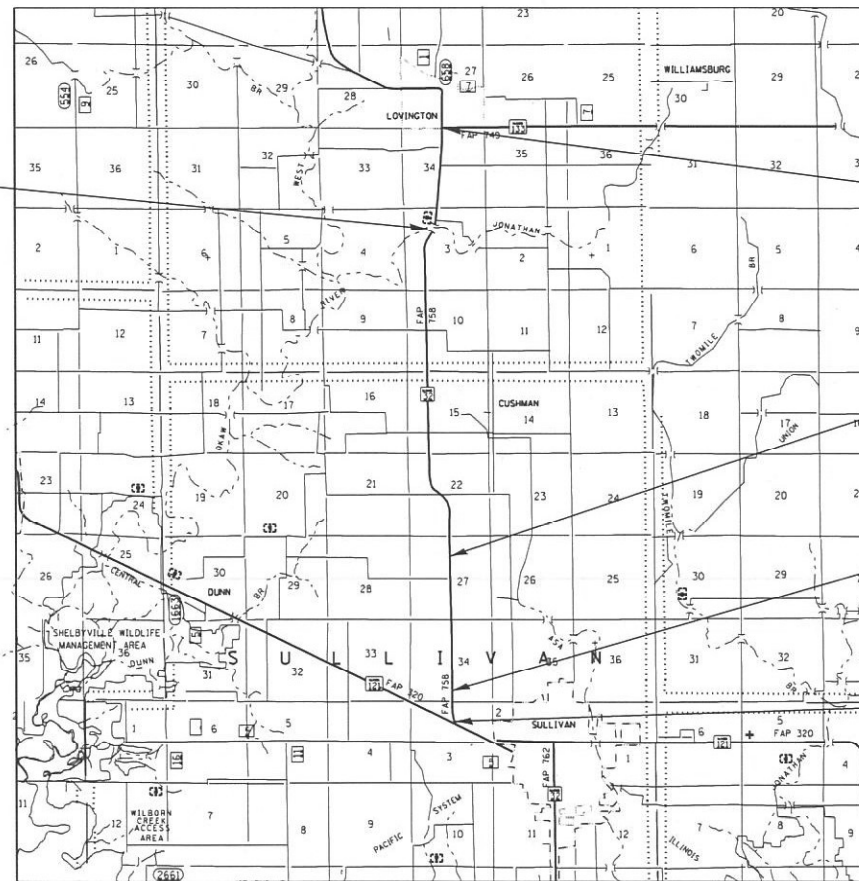
STATION EQUATION
STA 376+86 (BK) =
STA 913+00 (AH)

PROJECT ENDS
STA 900+23



FULL SIZE PLANS HAVE BEEN PREPARED USING STANDARD ENGINEERING SCALES. REDUCED SIZED PLANS WILL NOT CONFORM TO STANDARD SCALES. IN MAKING MEASUREMENTS ON REDUCED PLANS, THE ABOVE SCALES MAY BE USED.

J.U.L.I.E.
JOINT UTILITY LOCATION INFORMATION FOR EXCAVATION
1-800-892-0123
OR 811



GROSS LENGTH = 39,063.7 FT. = 7.398 MILES
NET LENGTH = 39,038.9 FT. = 7.394 MILES

STATE OF ILLINOIS
DEPARTMENT OF TRANSPORTATION
DIVISION OF HIGHWAYS

SUBMITTED DECEMBER 13 20 21

Jeffrey P. Myrland
DEPUTY DIRECTOR OF HIGHWAYS, REGION ENGINEER

February 4, 2022

Stephen M. L...
ENGINEER OF DESIGN AND ENVIRONMENT

February 4, 2022

Stephen M. L...
DIRECTOR OF HIGHWAYS PROJECT IMPLEMENTATION 2

**PRINTED BY THE AUTHORITY
OF THE STATE OF ILLINOIS**

PROJECT ENGINEER: DEBRA BARRETT
PROJECT MANAGER: AARON J METTE

CONTRACT NO. 74A22

INDEX OF SHEETS

SHEET NO.	TITLE
1	COVER SHEET
2	GENERAL NOTES, INDEX OF SHEETS
3-4	SUMMARY OF QUANTITIES
5	TYPICAL SECTIONS
6-12	SCHEDULES
13	SURVEY MARKER TIES
14	LOCATION MAP
15	ENTRANCE DETAIL
16-19	TYPICAL APPS. OF PAVEMENT MARKING
20	RUMBLE STRIPS DETAIL
21	SURVEY MARKER DETAIL

GENERAL NOTES

THE PROPOSED PROJECT IS LOCATED ON IL 32, BEGINNING AT THE INTERSECTION WITH IL 133 IN LOVINGTON AND PROCEEDING SOUTH 7.4 MILES TO IL 121 WEST OF SULLIVAN. THE WORK CONSISTS OF PAVEMENT PATCHING, HMA SURFACE REMOVAL, RESURFACING, PAVEMENT MARKING, AND OTHER WORK NECESSARY TO COMPLETE THE SECTION.

THE EXISTING PAVEMENT SHALL BE PATCHED IN ACCORDANCE WITH SECTION 442 OF THE STANDARD SPECIFICATIONS AND THE SPECIAL PROVISIONS. THE QUANTITY OF PATCHING SHOWN ON THE PLANS IS ONLY AN ESTIMATE AND THE FINAL LOCATIONS AND QUANTITY SHALL BE DETERMINED BY THE ENGINEER IN THE FIELD.

THE FOLLOWING MIXTURE REQUIREMENTS ARE APPLICABLE TO THIS PROJECT:

APPLICATION	AC/PG	DESIGN AIR VOIDS	MIXTURE COMPOSITION	FRICTION AGGREGATE	QUALITY MANAGEMENT
SURFACE COURSE	PG 64-22	4.0% @ N=70	IL - 9.5	MIXTURE C	PFP
INCIDENTAL SURFACE	PG 64-22	4.0% @ N=70	IL - 9.5	MIXTURE C	QC/QA
PAVEMENT PATCHING	PG 64-22	4.0% @ N=70	IL - 19.0	N/A	QC/QA
HOT-MIX ASPHALT SHOULDERS	PG 64-22	4.0% @ N=70	IL - 9.5	MIXTURE C	QC/QA

THE FOLLOWING RATES OF APPLICATION HAVE BEEN USED IN CALCULATION PLAN QUANTITIES:

AGGREGATE SURFACE COURSE	2.05 TONS / CU YD
AGGREGATE WEDGE SHOULDER	2.05 TONS / CU YD
HOT-MIX ASPHALT	112 LBS / SQ YD*INCH

HIGHWAY STANDARDS

THE FOLLOWING STANDARDS ARE A PART OF THESE PLANS AND ARE INCLUDED FOLLOWING THE LAST NUMBERED SHEET IN THE PLANS

- 000001-08 STANDARD SYMBOLS ABBREVIATIONS AND PATTERNS
- 001006 DECIMAL OF INCH AND FOOT
- 406201-01 MAILBOX TURNOUT
- 442201-03 CLASS C AND D PATCHES
- 667101-02 PERMANENT SURVEY MARKERS
- 701001-02 OFF-RD OP 2L 2W MORE THAN 15' AWAY
- 701006-05 OFF-RD OP 2L 2W 15'-24' FROM EOP
- 701201-05 LANE CLOSURE, 2L,2W DAY ONLY, 45 MPH OR MORE
- 701301-04 LANE CLOSURE, 2L,2W SHORT TIME OP
- 701306-04 LANE CLOSURE 2L,2W SLOW MOVE OP DAY ONLY 45 MPH OR MORE
- 701311-03 LANE CLOSURE 2L 2W-MOVING OP DAY ONLY
- 701901-08 TRAFFIC CONTROL DEVICES
- 780001-05 TYPICAL PAVEMENT MARKINGS
- 781001-04 TYPICAL APP. RAISED REFLECTIVE PAVEMENT MARKERS
- 642006-01 SHOULDER RUMBLE STRIPS, 8 IN.

REV. - MS

MODEL: Default
 FILE NAME: p:\w\l\dot\pw\berley.com\FWIDDOT\Documents\DOT_Offices\District_7\Projects\74A22\CAD\Drawings\Drawings\74A22-18-GenNotes.dgn

USER NAME = steffenmk	DESIGNED -	REVISED -	STATE OF ILLINOIS DEPARTMENT OF TRANSPORTATION	GENERAL NOTES, INDEX OF SHEETS LIST OF STANDARDS		F.A.P. RTE.	SECTION	COUNTY	TOTAL SHEETS	SHEET NO.
	DRAWN -	REVISED -		758	3RS-5,(4,5)RS-3	MOULTRIE	21	2		
PLOT SCALE = 100.0000' / in.	CHECKED -	REVISED -		SCALE: SHEET OF SHEETS STA TO STA.		ILLINOIS FED. AID PROJECT		CONTRACT NO. 74A22		
PLOT DATE = 12/13/2021	DATE -	REVISED -								

80% FED
20% STATE

80% FED
20% STATE

SUMMARY OF QUANTITIES			TOTAL QUANTITIES	CONSTRUCTION TYPE CODE		
CODE NO	ITEM	UNIT		0005		
40200800	AGGREGATE SURFACE COURSE, TYPE B	TON	268	268		
40600290	BITUMINOUS MATERIALS (TACK COAT)	POUND	52788	52788		
40600370	LONGITUDINAL JOINT SEALANT	FOOT	40091	40091		
40600990	TEMPORARY RAMP	SO YD	155	155		
40604052	HOT-MIX ASPHALT SURFACE COURSE, IL-9.5, MIX "C", N70	TON	9657	9657		
40800029	BITUMINOUS MATERIALS (TACK COAT)	POUND	1140	1140		
40800050	INCIDENTAL HOT-MIX ASPHALT SURFACING	TON	213	213		
44000155	HOT-MIX ASPHALT SURFACE REMOVAL, 1 1/2"	SO YD	117306	117306		
44201803	CLASS D PATCHES, TYPE II, 13 INCH	SO YD	2027	2027		
44201807	CLASS D PATCHES, TYPE III, 13 INCH	SO YD	285	285		
44201809	CLASS D PATCHES, TYPE IV, 13 INCH	SO YD	593	593		
48102100	AGGREGATE WEDGE SHOULDER, TYPE B	TON	2115	2115		
48203100	HOT-MIX ASPHALT SHOULDERS	TON	196	196		

SUMMARY OF QUANTITIES			TOTAL QUANTITIES	CONSTRUCTION TYPE CODE		
CODE NO	ITEM	UNIT		0005		
64200108	SHOULDER RUMBLE STRIPS, 8 INCH	FOOT	1825	1825		
66700205	PERMANENT SURVEY MARKERS, TYPE I	EACH	12	12		
67000400	ENGINEER'S FIELD OFFICE, TYPE A	CAL MO	4	4		
67100100	MOBILIZATION	L SUM	1	1		
70100450	TRAFFIC CONTROL AND PROTECTION, STANDARD 701201	L SUM	1	1		
70100460	TRAFFIC CONTROL AND PROTECTION, STANDARD 701306	L SUM	1	1		
70107025	CHANGEABLE MESSAGE SIGN	CAL DA	28	28		
70300100	SHORT TERM PAVEMENT MARKING	FOOT	8288	8288		
70300150	SHORT TERM PAVEMENT MARKING REMOVAL	SO FT	1381	1381		
* 78000200	THERMOPLASTIC PAVEMENT MARKING - LINE 4"	FOOT	5345	5345		
* 78000500	THERMOPLASTIC PAVEMENT MARKING - LINE 8"	FOOT	196	196		
* 78000600	THERMOPLASTIC PAVEMENT MARKING - LINE 12"	FOOT	408	408		
* 78000650	THERMOPLASTIC PAVEMENT MARKING - LINE 24"	FOOT	45	45		

* SPECIALTY ITEM

MODEL: Default
 FILE NAME: p:\project-aw-bee\paw.com\p\INDOT\Documents\DOT Office\Director_7\Project\74A22\CADD\DATA\CAD\Sheet\DOT74A22-shs-500.dgn

USER NAME = stefenmk	DESIGNED -	REVISED -
PLOT SCALE = 100,0000' / in.	DRAWN -	REVISIED -
PLOT DATE = 12/13/2021	CHECKED -	REVISIED -
	DATE -	REVISIED -

STATE OF ILLINOIS
DEPARTMENT OF TRANSPORTATION

SUMMARY OF QUANTITIES

SCALE: SHEET OF SHEETS STA. TO STA.

F.A.P. RTE.	SECTION	COUNTY	TOTAL SHEETS	SHEET NO.
758	3RS-5,(4,5)RS-3	MOULTRIE	21	3
ILLINOIS FED. AID PROJECT			CONTRACT NO. 74A22	

Show for Payment "Y"	Patch #	Location		Laid Out		Plan Depth in	Type 2 sy	Type 3 sy	Type 4 sy
		Lt./Rt.	Station	Length ft	Width ft				
NBL	1	Rt	901+54	4.0	14.0	13.0	6.2		
NBL	2	Rt	902+02	4.0	14.0	13.0	6.2		
NBL	3	Rt	902+53	4.0	14.0	13.0	6.2		
NBL	4	Rt	903+50	12.0	14.0	13.0		18.7	
NBL	5	Rt	904+49	4.0	14.0	13.0	6.2		
NBL	6	Rt	904+73	4.0	14.0	13.0	6.2		
NBL	7	Rt	905+51	6.0	14.0	13.0	9.3		
NBL	8	Rt	906+55	6.0	14.0	13.0	9.3		
NBL	9	Rt	907+50	6.0	14.0	13.0	9.3		
NBL	10	Rt	908+50	8.0	13.0	13.0	11.6		
NBL	11	Rt	909+07	4.0	13.0	13.0	5.8		
NBL	12	Rt	909+48	6.0	13.0	13.0	8.7		
NBL	13	Rt	910+53	45.0	13.0	13.0			65.0
NBL	14	Rt	911+98	4.0	13.0	13.0	5.8		
NBL	15	Rt	912+35	4.0	13.0	13.0	5.8		
NBL	16	Rt	376+83	4.0	13.0	13.0	5.8		
NBL	17	Rt	373+72	6.0	13.0	13.0	8.7		
NBL	18	Rt	369+03	4.0	13.0	13.0	5.8		
NBL	19	Rt	363+42	4.0	13.0	13.0	5.8		
NBL	20	Rt	359+30	6.0	13.0	13.0	8.7		
NBL	21	Rt	358+49	4.0	13.0	13.0	5.8		
NBL	22	Rt	356+10	6.0	13.0	13.0	8.7		
NBL	23	Rt	353+31	4.0	13.0	13.0	5.8		
NBL	24	Rt	352+69	4.0	13.0	13.0	5.8		
NBL	25	Rt	351+81	4.0	13.0	13.0	5.8		
NBL	26	Rt	350+72	4.0	13.0	13.0	5.8		
NBL	27	Rt	349+37	4.0	13.0	13.0	5.8		
NBL	28	Rt	345+49	4.0	13.0	13.0	5.8		
NBL	29	Rt	341+97	4.0	13.0	13.0	5.8		
NBL	30	Rt	340+60	16.0	13.0	13.0		23.1	
NBL	31	Rt	339+47	4.0	13.0	13.0	5.8		
NBL	32	Rt	335+90	4.0	13.0	13.0	5.8		
NBL	33	Rt	333+91	4.0	13.0	13.0	5.8		

Show for Payment "Y"	Patch #	Location		Laid Out		Plan Depth in	Type 2 sy	Type 3 sy	Type 4 sy
		Lt./Rt.	Station	Length ft	Width ft				
NBL	34	Rt	332+93	4.0	13.0	13.0	5.8		
NBL	35	Rt	331+48	4.0	13.0	13.0	5.8		
NBL	36	Rt	330+66	4.0	13.0	13.0	5.8		
NBL	37	Rt	330+00	4.0	13.0	13.0	5.8		
NBL	38	Rt	327+68	13.0	13.0	13.0		18.8	
NBL	39	Rt	326+16	4.0	13.0	13.0	5.8		
NBL	40	Rt	324+88	4.0	13.0	13.0	5.8		
NBL	41	Rt	322+84	6.0	13.0	13.0	8.7		
NBL	42	Rt	321+13	4.0	13.0	13.0	5.8		
NBL	43	Rt	320+77	6.0	13.0	13.0	8.7		
NBL	44	Rt	319+18	4.0	13.0	13.0	5.8		
NBL	45	Rt	317+51	4.0	13.0	13.0	5.8		
NBL	46	Rt	316+87	4.0	13.0	13.0	5.8		
NBL	47	Rt	315+43	4.0	13.0	13.0	5.8		
NBL	48	Rt	314+49	4.0	13.0	13.0	5.8		
NBL	49	Rt	314+05	6.0	13.0	13.0	8.7		
NBL	50	Rt	313+68	4.0	13.0	13.0	5.8		
NBL	51	Rt	312+56	4.0	13.0	13.0	5.8		
NBL	52	Rt	312+18	6.0	13.0	13.0	8.7		
NBL	53	Rt	310+84	4.0	13.0	13.0	5.8		
NBL	54	Rt	309+87	4.0	13.0	13.0	5.8		
NBL	55	Rt	308+99	6.0	13.0	13.0	8.7		
NBL	56	Rt	308+24	4.0	13.0	13.0	5.8		
NBL	57	Rt	307+94	4.0	13.0	13.0	5.8		
NBL	58	Rt	307+34	4.0	13.0	13.0	5.8		
NBL	59	Rt	306+72	4.0	13.0	13.0	5.8		
NBL	60	Rt	304+94	4.0	13.0	13.0	5.8		
NBL	61	Rt	304+42	4.0	13.0	13.0	5.8		
NBL	62	Rt	303+98	4.0	13.0	13.0	5.8		
NBL	63	Rt	302+81	4.0	13.0	13.0	5.8		
NBL	64	Rt	301+12	8.0	13.0	13.0	11.6		
NBL	65	Rt	299+67	8.0	13.0	13.0	11.6		
NBL	66	Rt	297+15	4.0	13.0	13.0	5.8		

MODEL: Default
 FILE: \\blmfc-pw-beadfx.com\PIV\DOT\Documents\DOT Office\Director_7\Projects\74A22\CADD\DATA\CAD\Sheet\DOT74A22-sheetschedule.dgn

USER NAME = stefenmk	DESIGNED -	REVISED -
	DRAWN -	REVISED -
PLOT SCALE = 100,0000' / in.	CHECKED -	REVISED -
PLOT DATE = 12/13/2021	DATE -	REVISED -

**STATE OF ILLINOIS
DEPARTMENT OF TRANSPORTATION**

SCHEDULE OF QUANTITIES

SCALE: SHEET OF SHEETS STA. TO STA.

F.A.P. RTE.	SECTION	COUNTY	TOTAL SHEETS	SHEET NO.
758	3RS-5,(4,5)RS-3	MOULTRIE	21	7
CONTRACT NO. 74A22				
ILLINOIS FED. AID PROJECT				

Show for Payment "Y"	Patch #	Location		Laid Out		Plan Depth in	Type 2 sy	Type 3 sy	Type 4 sy
		Lt./Rt.	Station	Length ft	Width ft				
NBL	67	Rt	297+04	4.0	13.0	13.0	5.8		
NBL	68	Rt	295+85	6.0	13.0	13.0	8.7		
NBL	69	Rt	294+70	30.0	13.0	13.0			43.3
NBL	70	Rt	293+78	12.0	13.0	13.0		17.3	
NBL	71	Rt	293+35	4.0	13.0	13.0	5.8		
NBL	72	Rt	291+42	4.0	13.0	13.0	5.8		
NBL	73	Rt	289+19	4.0	13.0	13.0	5.8		
NBL	74	Rt	288+32	4.0	13.0	13.0	5.8		
NBL	75	Rt	287+50	4.0	13.0	13.0	5.8		
NBL	76	Rt	287+17	4.0	13.0	13.0	5.8		
NBL	77	Rt	284+59	6.0	13.0	13.0	8.7		
NBL	78	Rt	282+87	4.0	13.0	13.0	5.8		
NBL	79	Rt	282+44	4.0	13.0	13.0	5.8		
NBL	80	Rt	279+07	4.0	13.0	13.0	5.8		
NBL	81	Rt	276+83	15.0	13.0	13.0		21.7	
NBL	82	Rt	275+87	4.0	13.0	13.0	5.8		
NBL	83	Rt	274+66	4.0	13.0	13.0	5.8		
NBL	84	Rt	272+60	4.0	13.0	13.0	5.8		
NBL	85	Rt	269+78	4.0	13.0	13.0	5.8		
NBL	86	Rt	268+26	4.0	13.0	13.0	5.8		
NBL	87	Rt	267+09	4.0	13.0	13.0	5.8		
NBL	88	Rt	265+97	4.0	13.0	13.0	5.8		
NBL	89	Rt	264+48	10.0	13.0	13.0	14.4		
NBL	90	Rt	258+11	6.0	13.0	13.0	8.7		
NBL	91	Rt	255+21	6.0	13.0	13.0	8.7		
NBL	92	Rt	253+85	4.0	13.0	13.0	5.8		
NBL	93	Rt	253+20	4.0	13.0	13.0	5.8		
NBL	94	Rt	251+43	4.0	13.0	13.0	5.8		
NBL	95	Rt	247+40	4.0	13.0	13.0	5.8		
NBL	96	Rt	243+73	4.0	13.0	13.0	5.8		
NBL	97	Rt	241+28	6.0	13.0	13.0	8.7		
NBL	98	Rt	239+51	4.0	13.0	13.0	5.8		
NBL	99	Rt	238+25	6.0	13.0	13.0	8.7		

Show for Payment "Y"	Patch #	Location		Laid Out		Plan Depth in	Type 2 sy	Type 3 sy	Type 4 sy
		Lt./Rt.	Station	Length ft	Width ft				
NBL	100	Rt	237+03	4.0	13.0	13.0	5.8		
NBL	101	Rt	235+71	4.0	13.0	13.0	5.8		
NBL	102	Rt	233+32	4.0	13.0	13.0	5.8		
NBL	103	Rt	224+61	4.0	13.0	13.0	5.8		
NBL	104	Rt	222+67	6.0	13.0	13.0	8.7		
NBL	105	Rt	220+16	4.0	13.0	13.0	5.8		
NBL	106	Rt	219+34	4.0	13.0	13.0	5.8		
NBL	107	Rt	215+59	4.0	13.0	13.0	5.8		
NBL	108	Rt	211+69	4.0	13.0	13.0	5.8		
NBL	109	Rt	210+48	4.0	13.0	13.0	5.8		
NBL	110	Rt	208+46	4.0	13.0	13.0	5.8		
NBL	111	Rt	207+25	4.0	13.0	13.0	5.8		
NBL	112	Rt	205+19	4.0	13.0	13.0	5.8		
NBL	113	Rt	204+20	6.0	13.0	13.0	8.7		
NBL	114	Rt	203+11	4.0	13.0	13.0	5.8		
NBL	115	Rt	201+51	8.0	13.0	13.0	11.6		
NBL	116	Rt	199+50	6.0	13.0	13.0	8.7		
NBL	117	Rt	195+72	4.0	13.0	13.0	5.8		
NBL	118	Rt	195+07	4.0	13.0	13.0	5.8		
NBL	119	Rt	194+00	4.0	13.0	13.0	5.8		
NBL	120	Rt	192+68	8.0	13.0	13.0	11.6		
NBL	121	Rt	191+14	4.0	13.0	13.0	5.8		
NBL	122	Rt	188+40	6.0	13.0	13.0	8.7		
NBL	123	Rt	186+27	4.0	13.0	13.0	5.8		
NBL	124	Rt	183+45	8.0	13.0	13.0	11.6		
NBL	125	Rt	179+49	4.0	13.0	13.0	5.8		
NBL	126	Rt	178+33	4.0	13.0	13.0	5.8		
NBL	127	Rt	176+72	4.0	13.0	13.0	5.8		
NBL	128	Rt	175+59	4.0	13.0	13.0	5.8		
NBL	129	Rt	173+61	4.0	13.0	13.0	5.8		
NBL	130	Rt	168+88	4.0	13.0	13.0	5.8		
NBL	131	Rt	165+08	4.0	13.0	13.0	5.8		
NBL	132	Rt	162+72	8.0	13.0	13.0	11.6		

MODEL: Default
 FILE: \\blmfc-pw-beadley.com\PIV\DOT\Documents\DOT_Offices\Dir\rdt_7\Project\74A22\CADD\DATA\CAD\Sheet\DOT74A22-shschedules.dwg

USER NAME = stefenmk	DESIGNED -	REVISED -
PLOT SCALE = 100,0000' / in.	DRAWN -	REVISED -
PLOT DATE = 12/13/2021	CHECKED -	REVISED -
	DATE -	REVISED -

**STATE OF ILLINOIS
DEPARTMENT OF TRANSPORTATION**

SCHEDULE OF QUANTITIES

SCALE: SHEET OF SHEETS STA. TO STA.

F.A.P. RTE.	SECTION	COUNTY	TOTAL SHEETS	SHEET NO.
758	3RS-5,(4,5)RS-3	MOULTRIE	21	8
			CONTRACT NO. 74A22	
		ILLINOIS FED. AID PROJECT		

Show for Payment "Y"	Patch #	Location Laid Out				Plan Depth in	Type 2 sy	Type 3 sy	Type 4 sy
		Lt./Rt.	Station	Length ft	Width ft				
NBL	133	Rt	159+10	4.0	13.0	13.0	5.8		
NBL	134	Rt	154+84	4.0	13.0	13.0	5.8		
NBL	135	Rt	151+27	4.0	13.0	13.0	5.8		
NBL	136	Rt	147+75	4.0	13.0	13.0	5.8		
NBL	137	Rt	144+32	4.0	13.0	13.0	5.8		
NBL	138	Rt	143+22	6.0	13.0	13.0	8.7		
NBL	139	Rt	140+95	4.0	13.0	13.0	5.8		
NBL	140	Rt	139+81	4.0	13.0	13.0	5.8		
NBL	141	Rt	138+28	4.0	13.0	13.0	5.8		
NBL	142	Rt	136+34	4.0	13.0	13.0	5.8		
NBL	143	Rt	135+07	4.0	13.0	13.0	5.8		
NBL	144	Rt	132+85	4.0	13.0	13.0	5.8		
NBL	145	Rt	131+63	4.0	13.0	13.0	5.8		
NBL	146	Rt	130+46	4.0	13.0	13.0	5.8		
NBL	147	Rt	128+84	6.0	13.0	13.0	8.7		
NBL	148	Rt	127+08	4.0	13.0	13.0	5.8		
NBL	149	Rt	124+78	4.0	13.0	13.0	5.8		
NBL	150	Rt	122+76	4.0	13.0	13.0	5.8		
NBL	151	Rt	122+27	6.0	13.0	13.0	8.7		
NBL	152	Rt	116+70	6.0	13.0	13.0	8.7		
NBL	153	Rt	110+14	4.0	13.0	13.0	5.8		
NBL	154	Rt	108+79	12.0	13.0	13.0		17.3	
NBL	155	Rt	106+30	4.0	13.0	13.0	5.8		
NBL	156	Rt	99+90	4.0	13.0	13.0	5.8		
NBL	157	Rt	97+89	4.0	13.0	13.0	5.8		
NBL	158	Rt	95+78	4.0	13.0	13.0	5.8		
NBL	159	Rt	89+94	4.0	13.0	13.0	5.8		
NBL	160	Rt	81+92	4.0	13.0	13.0	5.8		
NBL	161	Rt	80+84	4.0	13.0	13.0	5.8		
NBL	162	Rt	56+92	4.0	13.0	13.0	5.8		
NBL	163	Rt	42+69	4.0	13.0	13.0	5.8		
NBL	164	Rt	41+70	4.0	13.0	13.0	5.8		
NBL	165	Rt	40+53	18.0	13.0	13.0			26.0

Show for Payment "Y"	Patch #	Location		Laid Out		Plan Depth in	Type 2 sy	Type 3 sy	Type 4 sy
		Lt./Rt.	Station	Length ft	Width ft				
NBL	166	Rt	37+72	4.0	13.0	13.0	5.8		
NBL	167	Rt	34+89	4.0	13.0	13.0	5.8		
NBL	168	Rt	31+92	4.0	13.0	13.0	5.8		
NBL	169	Rt	28+24	4.0	13.0	13.0	5.8		
NBL	170	Rt	27+36	4.0	13.0	13.0	5.8		
NBL	171	Rt	26+49	4.0	13.0	13.0	5.8		
NBL	172	Rt	25+79	4.0	13.0	13.0	5.8		
NBL	173	Rt	22+99	4.0	13.0	13.0	5.8		
NBL	174	Rt	16+90	4.0	13.0	13.0	5.8		
NBL	175	Rt	15+46	4.0	13.0	13.0	5.8		
NBL	176	Rt	12+64	4.0	13.0	13.0	5.8		
NBL	177	Rt	9+97	4.0	13.0	13.0	5.8		
NBL	178	Rt	5+30	4.0	13.0	13.0	5.8		
SBL	179	Lt	4+73	4.0	13.0	13.0	5.8		
SBL	180	Lt	8+36	4.0	13.0	13.0	5.8		
SBL	181	Lt	9+29	4.0	13.0	13.0	5.8		
SBL	182	Lt	10+90	4.0	13.0	13.0	5.8		
SBL	183	Lt	12+88	4.0	13.0	13.0	5.8		
SBL	184	Lt	14+73	4.0	13.0	13.0	5.8		
SBL	185	Lt	18+39	4.0	13.0	13.0	5.8		
SBL	186	Lt	19+82	8.0	13.0	13.0	11.6		
SBL	187	Lt	25+88	4.0	13.0	13.0	5.8		
SBL	188	Lt	27+03	4.0	13.0	13.0	5.8		
SBL	189	Lt	28+69	4.0	13.0	13.0	5.8		
SBL	190	Lt	30+25	4.0	13.0	13.0	5.8		
SBL	191	Lt	34+77	4.0	13.0	13.0	5.8		
SBL	192	Lt	40+60	4.0	13.0	13.0	5.8		
SBL	193	Lt	45+57	4.0	13.0	13.0	5.8		
SBL	194	Lt	48+41	4.0	13.0	13.0	5.8		
SBL	195	Lt	58+82	4.0	13.0	13.0	5.8		
SBL	196	Lt	63+38	4.0	13.0	13.0	5.8		
SBL	197	Lt	69+31	4.0	13.0	13.0	5.8		
SBL	198	Lt	72+31	4.0	13.0	13.0	5.8		

MODEL: Default
 FILE: \\blmfc-pw-beadley.com\FW\DOT\Documents\DOT_Offices\Director_T\Projects\74A22\CADD\DATA\CAD\Sheet\DOT74A22-sheetschedule.dgn

USER NAME = stefenmk	DESIGNED -	REVISED -
PLOT SCALE = 100,0000' / in.	DRAWN -	REVISED -
PLOT DATE = 12/13/2021	CHECKED -	REVISED -
	DATE -	REVISED -

**STATE OF ILLINOIS
DEPARTMENT OF TRANSPORTATION**

SCHEDULE OF QUANTITIES

SCALE: SHEET OF SHEETS STA. TO STA.

F.A.P. RTE.	SECTION	COUNTY	TOTAL SHEETS	SHEET NO.
758	3RS-5.(4,5)RS-3	MOULTRIE	21	9
			CONTRACT NO. 74A22	
		ILLINOIS FED. AID PROJECT		

Show for Payment "Y"	Patch #	Location		Laid Out		Plan Depth in	Type 2 sy	Type 3 sy	Type 4 sy
		Lt./Rt.	Station	Length ft	Width ft				
SBL	199	Lt	80+52	4.0	13.0	13.0	5.8		
SBL	200	Lt	82+97	4.0	13.0	13.0	5.8		
SBL	201	Lt	84+82	6.0	13.0	13.0	8.7		
SBL	202	Lt	87+90	4.0	13.0	13.0	5.8		
SBL	203	Lt	96+94	4.0	13.0	13.0	5.8		
SBL	204	Lt	98+69	4.0	13.0	13.0	5.8		
SBL	205	Lt	100+80	4.0	13.0	13.0	5.8		
SBL	206	Lt	104+11	4.0	13.0	13.0	5.8		
SBL	207	Lt	107+08	4.0	13.0	13.0	5.8		
SBL	208	Lt	109+70	6.0	13.0	13.0	8.7		
SBL	209	Lt	111+52	8.0	13.0	13.0	11.6		
SBL	210	Lt	116+72	6.0	13.0	13.0	8.7		
SBL	211	Lt	119+60	8.0	13.0	13.0	11.6		
SBL	212	Lt	125+16	6.0	13.0	13.0	8.7		
SBL	213	Lt	125+67	4.0	13.0	13.0	5.8		
SBL	214	Lt	127+64	4.0	13.0	13.0	5.8		
SBL	215	Lt	129+95	4.0	13.0	13.0	5.8		
SBL	216	Lt	131+73	4.0	13.0	13.0	5.8		
SBL	217	Lt	133+35	6.0	13.0	13.0	8.7		
SBL	218	Lt	135+72	4.0	13.0	13.0	5.8		
SBL	219	Lt	137+91	4.0	13.0	13.0	5.8		
SBL	220	Lt	141+27	4.0	13.0	13.0	5.8		
SBL	221	Lt	143+75	6.0	13.0	13.0	8.7		
SBL	222	Lt	146+06	4.0	13.0	13.0	5.8		
SBL	223	Lt	147+14	4.0	13.0	13.0	5.8		
SBL	224	Lt	148+95	4.0	13.0	13.0	5.8		
SBL	225	Lt	150+64	6.0	13.0	13.0	8.7		
SBL	226	Lt	152+40	6.0	13.0	13.0	8.7		
SBL	227	Lt	154+00	4.0	13.0	13.0	5.8		
SBL	228	Lt	156+09	4.0	13.0	13.0	5.8		
SBL	229	Lt	157+67	4.0	13.0	13.0	5.8		
SBL	230	Lt	163+07	4.0	13.0	13.0	5.8		
SBL	231	Lt	165+55	4.0	13.0	13.0	5.8		

Show for Payment "Y"	Patch #	Location		Laid Out		Plan Depth in	Type 2 sy	Type 3 sy	Type 4 sy
		Lt./Rt.	Station	Length ft	Width ft				
SBL	232	Lt	167+90	4.0	13.0	13.0	5.8		
SBL	233	Lt	173+25	4.0	13.0	13.0	5.8		
SBL	234	Lt	175+16	4.0	13.0	13.0	5.8		
SBL	235	Lt	183+20	4.0	13.0	13.0	5.8		
SBL	236	Lt	186+16	4.0	13.0	13.0	5.8		
SBL	237	Lt	187+93	4.0	13.0	13.0	5.8		
SBL	238	Lt	189+08	4.0	13.0	13.0	5.8		
SBL	239	Lt	191+11	6.0	13.0	13.0	8.7		
SBL	240	Lt	198+41	4.0	13.0	13.0	5.8		
SBL	241	Lt	200+92	8.0	13.0	13.0	11.6		
SBL	242	Lt	202+17	4.0	13.0	13.0	5.8		
SBL	243	Lt	204+24	4.0	13.0	13.0	5.8		
SBL	244	Lt	205+82	4.0	13.0	13.0	5.8		
SBL	245	Lt	206+90	10.0	13.0	13.0	14.4		
SBL	246	Lt	207+89	4.0	13.0	13.0	5.8		
SBL	247	Lt	209+96	6.0	13.0	13.0	8.7		
SBL	248	Lt	211+17	4.0	13.0	13.0	5.8		
SBL	249	Lt	213+16	4.0	13.0	13.0	5.8		
SBL	250	Lt	214+37	8.0	13.0	13.0	11.6		
SBL	251	Lt	215+35	30.0	13.0	13.0			43.3
SBL	252	Lt	218+40	8.0	13.0	13.0	11.6		
SBL	253	Lt	220+02	4.0	13.0	13.0	5.8		
SBL	254	Lt	222+84	6.0	13.0	13.0	8.7		
SBL	255	Lt	224+56	4.0	13.0	13.0	5.8		
SBL	256	Lt	225+36	6.0	13.0	13.0	8.7		
SBL	257	Lt	227+26	4.0	13.0	13.0	5.8		
SBL	258	Lt	236+15	8.0	13.0	13.0	11.6		
SBL	259	Lt	238+61	15.0	13.0	13.0		21.7	
SBL	260	Lt	239+97	4.0	13.0	13.0	5.8		
SBL	261	Lt	241+15	12.0	13.0	13.0		17.3	
SBL	262	Lt	244+17	8.0	13.0	13.0	11.6		
SBL	263	Lt	256+54	4.0	13.0	13.0	5.8		
SBL	264	Lt	257+84	6.0	13.0	13.0	8.7		

MODEL: Default
 FILE: \\na11c-pw-beadefy.com\PIV\DOT\Documents\DOT_Offices\Dir\dr_7\Project\74A22\CAD\Drawings\DOT\74A22-sheetschedule.dwg

USER NAME = stefnrmk	DESIGNED -	REVISED -
	DRAWN -	REVISED -
PLOT SCALE = 100,0000' / in.	CHECKED -	REVISED -
PLOT DATE = 12/13/2021	DATE -	REVISED -

**STATE OF ILLINOIS
DEPARTMENT OF TRANSPORTATION**

SCHEDULE OF QUANTITIES

SCALE: SHEET OF SHEETS STA. TO STA.

F.A.P. RTE.	SECTION	COUNTY	TOTAL SHEETS	SHEET NO.
758	3RS-5.(4,5)RS-3	MOULTRIE	21	10
			CONTRACT NO. 74A22	
		ILLINOIS	FED. AID PROJECT	

Show for Payment "Y"	Patch #	Location		Laid Out		Plan Depth in	Type 2 sy	Type 3 sy	Type 4 sy
		Lt./Rt.	Station	Length ft	Width ft				
SBL	265	Lt	259+26	4.0	13.0	13.0	5.8		
SBL	266	Lt	260+73	4.0	13.0	13.0	5.8		
SBL	267	Lt	262+08	4.0	13.0	13.0	5.8		
SBL	268	Lt	263+02	4.0	13.0	13.0	5.8		
SBL	269	Lt	266+91	24.0	13.0	13.0			34.7
SBL	270	Lt	268+58	4.0	13.0	13.0	5.8		
SBL	271	Lt	269+69	6.0	13.0	13.0	8.7		
SBL	272	Lt	270+88	4.0	13.0	13.0	5.8		
SBL	273	Lt	273+72	4.0	13.0	13.0	5.8		
SBL	274	Lt	275+39	4.0	13.0	13.0	5.8		
SBL	275	Lt	277+43	4.0	13.0	13.0	5.8		
SBL	276	Lt	281+84	4.0	13.0	13.0	5.8		
SBL	277	Lt	285+96	17.0	13.0	13.0		24.6	
SBL	278	Lt	287+65	4.0	13.0	13.0	5.8		
SBL	279	Lt	288+39	4.0	13.0	13.0	5.8		
SBL	280	Lt	289+48	4.0	13.0	13.0	5.8		
SBL	281	Lt	293+45	4.0	13.0	13.0	5.8		
SBL	282	Lt	295+89	4.0	13.0	13.0	5.8		
SBL	283	Lt	299+73	4.0	13.0	13.0	5.8		
SBL	284	Lt	301+18	4.0	13.0	13.0	5.8		
SBL	285	Lt	302+86	4.0	13.0	13.0	5.8		
SBL	286	Lt	305+00	4.0	13.0	13.0	5.8		
SBL	287	Lt	306+75	4.0	13.0	13.0	5.8		
SBL	288	Lt	308+14	4.0	13.0	13.0	5.8		
SBL	289	Lt	310+91	16.0	13.0	13.0		23.1	
SBL	290	Lt	312+01	4.0	13.0	13.0	5.8		
SBL	291	Lt	312+60	4.0	13.0	13.0	5.8		
SBL	292	Lt	313+73	4.0	13.0	13.0	5.8		
SBL	293	Lt	315+49	4.0	13.0	13.0	5.8		
SBL	294	Lt	320+82	4.0	13.0	13.0	5.8		
SBL	295	Lt	324+37	12.0	13.0	13.0		17.3	
SBL	296	Lt	327+71	6.0	13.0	13.0	8.7		
SBL	297	Lt	330+00	4.0	13.0	13.0	5.8		

Show for Payment "Y"	Patch #	Location		Laid Out		Plan Depth in	Type 2 sy	Type 3 sy	Type 4 sy	
		Lt./Rt.	Station	Length ft	Width ft					
SBL	298	Lt	332+94	4.0	13.0	13.0	5.8			
SBL	299	Lt	333+90	4.0	13.0	13.0	5.8			
SBL	300	Lt	336+00	4.0	13.0	13.0	5.8			
SBL	301	Lt	344+05	4.0	13.0	13.0	5.8			
SBL	302	Lt	352+64	4.0	13.0	13.0	5.8			
SBL	303	Lt	365+10	27.0	13.0	13.0			39.0	
SBL	304	Lt	366+81	8.0	13.0	13.0	11.6			
SBL	305	Lt	367+50	6.0	13.0	13.0	8.7			
SBL	306	Lt	370+58	4.0	13.0	13.0	5.8			
SBL	307	Lt	372+26	4.0	13.0	13.0	5.8			
SBL	308	Lt	373+65	4.0	13.0	13.0	5.8			
SBL	309	Lt	374+47	12.0	13.0	13.0		17.3		
SBL	310	Lt	376+69	6.0	13.0	13.0	8.7			
SBL	311	Lt	92+48	4.0	13.0	13.0	5.8			
SBL	312	Lt	91+34	4.0	13.0	13.0	5.8			
SBL	313	Lt	90+96	6.0	13.0	13.0	8.7			
SBL	314	Lt	90+52	10.0	13.0	13.0	14.4			
SBL	315	Lt	89+75	35.0	13.0	13.0			50.6	
SBL	316	Lt	89+04	4.0	13.0	13.0	5.8			
SBL	317	Lt	88+75	4.0	13.0	13.0	5.8			
SBL	318	Lt	88+44	8.0	13.0	13.0	11.6			
SBL	319	Lt	88+00	4.0	13.0	13.0	5.8			
SBL	320	Lt	87+43	10.0	14.0	13.0		15.6		
SBL	321	Lt	86+77	34.0	14.0	13.0			52.9	
SBL	322	Lt	86+05	4.0	14.0	13.0	6.2			
SBL	323	Lt	85+48	10.0	14.0	13.0		15.6		
SBL	324	Lt	84+83	4.0	14.0	13.0	6.2			
SBL	325	Lt	84+62	35.0	14.0	13.0			54.4	
SBL	326	Lt	83+86	4.0	14.0	13.0	6.2			
SBL	327	Lt	83+67	4.0	14.0	13.0	6.2			
SBL	328	Lt	83+51	4.0	14.0	13.0	6.2			
SBL	329	Lt	83+05	10.0	14.0	13.0		15.6		
SBL	330	Lt	82+71	30.0	14.0	13.0			46.7	
SBL	331	Lt	81+88	60.0	14.0	13.0			93.3	
SBL	332	Lt	80+54	30.0	13.0	13.0			43.3	
TOTAL							2027	285	593	

MODEL: Default
 FILE: \\blmfc-pw-backend.com\FW\DOT\Documents\DOT_Offices\Dir\dr_7\Project\74A22\CADDData\CAD\Sheet\DOT74A22-sheschedule.dwg

USER NAME = stefnrmk	DESIGNED -	REVISED -
PLOT SCALE = 100,0000' / in.	DRAWN -	REVISED -
PLOT DATE = 12/13/2021	CHECKED -	REVISED -
	DATE -	REVISED -

**STATE OF ILLINOIS
DEPARTMENT OF TRANSPORTATION**

SCHEDULE OF QUANTITIES

SCALE: SHEET OF SHEETS STA. TO STA.

F.A.P. RTE.	SECTION	COUNTY	TOTAL SHEETS	SHEET NO.
758	3RS-5,(4,5)RS-3	MOULTRIE	21	11
CONTRACT NO. 74A22				
ILLINOIS FED. AID PROJECT				

DESCR.	NOTE	STA.	L/R	MATL.	LENGTH (L)	WIDTH @ SHOULDER	WIDTH @ L	AREA (SF)	INCIDENTAL HMA SURFACE 40800050	SURFACE REMOVAL, VARIABLE DEPTH (SPECIAL) X0326440	Tack Coat LBS 40800029	AGG SURFACE COURSE 40200800
FE		1+65.00	R	AGG	10.0	16.0	16.0	160.0				1.5
FE		13+25.00	L	AGG	10.0	20.0	15.0	175.0				1.7
INT	2075N	13+35.00	R	HMA	10.0	45.0	26.0	355.0	3.3	39.4	17.8	
MB		22+55.00	L	HMA	10.0	25.0	15.0	125.0	1.2	13.9	6.3	
PE		22+67.00	L	HMA	10.0	34.0	25.0	295.0	2.8	32.8	14.8	
FE		26+79.00	R	AGG	10.0	15.0	15.0	150.0				1.4
INT	2050N	26+80.00	L	HMA	10.0	45.0	28.0	365.0	3.4	40.6	18.3	
PE		40+00.00	R	HMA	10.0	40.0	18.0	290.0	2.7	32.2	14.5	
INT	2000N	52+95.00	R	HMA	10.0	65.0	36.0	505.0	4.7	56.1	25.3	
PE		57+90.00	R	HMA	10.0	27.0	15.0	210.0	2.0	23.3	10.5	
INT	1985N	60+95.00	L	HMA	10.0	42.0	25.0	335.0	3.1	37.2	16.8	
CE		62+50.00	L	HMA	10.0	47.0	20.0	335.0	3.1	37.2	16.8	
PE		63+00.00	L	HMA	10.0	30.0	16.0	230.0	2.1	25.6	11.5	
MB		63+45.00	R	HMA	10.0	82.0	30.0	410.0	3.8	45.6	20.5	
PE		66+00.00	L	HMA	10.0	30.0	16.0	320.0	3.0	35.6	16.0	
PE		66+65.00	R	HMA	10.0	22.0	10.0	160.0	1.5	17.8	8.0	
PE		71+90.00	R	HMA	10.0	40.0	25.0	625.0	5.8	69.4	31.3	
MB		72+00.00	R	HMA	10.0	47.0	16.0	235.0	2.2	26.1	11.8	
PE		72+55.00	R	HMA	10.0	30.0	16.0	320.0	3.0	35.6	16.0	
FE		79+20.00	R	AGG	10.0	25.0	20.0	350.0				3.3
FE		81+50.00	L	AGG	10.0	20.0	15.0	225.0				2.1
FE		81+80.00	R	AGG	10.0	25.0	20.0	350.0				3.3
FE		95+00.00	L	AGG	10.0	25.0	20.0	350.0				3.3
MB		96+62.00	R	HMA	10.0	40.0	25.0	200.0	1.9	22.2	10.0	
PE		97+00.00	R	HMA	10.0	40.0	22.0	550.0	5.1	61.1	27.5	
FE		97+75.00	R	AGG	10.0	42.0	40.0	1040.0				9.9
PE		102+97.00	L	HMA	10.0	40.0	30.0	750.0	7.0	83.3	37.5	
PE		110+00.00	R	AGG	10.0	60.0	50.0	1750.0				16.6
PE		111+80.00	L	HMA	10.0	32.0	20.0	420.0	3.9	46.7	21.0	
PE		112+75.00	R	AGG	10.0	55.0	50.0	1625.0				15.4
FE		112+85.00	L	AGG	10.0	10.0	10.0	100.0				0.9
FE		115+75.00	L	AGG	10.0	25.0	20.0	350.0				3.3
FE		121+25.00	R	AGG	10.0	35.0	30.0	675.0				6.4
FE		121+35.00	L	AGG	10.0	25.0	20.0	350.0				3.3
FE		125+10.00	R	AGG	10.0	30.0	25.0	500.0				4.7
INT	1850N	134+60.00	L	HMA	10.0	41.0	22.0	561.0	5.2	62.3	28.1	
INT	1850N	134+65.00	R	HMA	10.0	45.0	25.0	687.5	6.4	76.4	34.4	
PE		136+10.00	R	HMA	10.0	30.0	15.0	300.0	2.8	33.3	15.0	
FE		138+60.00	R	AGG	10.0	20.0	15.0	225.0				2.1
FE		143+00.00	R	AGG	10.0	25.0	20.0	350.0				3.3
FE		145+00.00	R	AGG	10.0	25.0	20.0	350.0				3.3
FE		146+67.00	L	AGG	10.0	30.0	20.0	400.0				3.8
FE		150+32.00	R	AGG	10.0	30.0	25.0	500.0				4.7
FE		161+15.00	R	AGG	10.0	30.0	25.0	500.0				4.7
FE		174+50.00	L	AGG	10.0	50.0	50.0	1500.0				14.2
FE		174+60.00	R	AGG	10.0	25.0	20.0	350.0				3.3
FE		187+68.00	R	AGG	10.0	30.0	25.0	500.0				4.7
FE		188+10.00	L	AGG	10.0	25.0	20.0	350.0				3.3
PE		196+20.00	R	HMA	10.0	70.0	40.0	1600.0	14.9	177.8	80.0	
FE		200+00.00	R	AGG	10.0	40.0	40.0	1000.0				9.5
INT	1750N	200+50.00	R	HMA	10.0	52.0	25.0	775.0	7.2	86.1	38.8	
INT	1750N	200+50.00	L	HMA	10.0	55.0	30.0	975.0	9.1	108.3	48.8	
FE		205+00.00	R	AGG	10.0	25.0	20.0	350.0				3.3
FE		213+81.00	R	AGG	10.0	35.0	30.0	675.0				6.4
FE		213+90.00	L	AGG	10.0	30.0	25.0	500.0				4.7

DESCR.	NOTE	STA.	L/R	MATL.	LENGTH (L)	WIDTH @ SHOULDER	WIDTH @ L	AREA (SF)	INCIDENTAL HMA SURFACE 40800050	SURFACE REMOVAL, VARIABLE DEPTH (SPECIAL) X0326440	Tack Coat LBS 40800029	AGG SURFACE COURSE 40200800	
FE		215+96.00	L	AGG	10.0	25.0	20.0	350.0				3.3	
FE		217+35.00	L	AGG	10.0	30.0	25.0	500.0				4.7	
FE		218+60.00	L	AGG	10.0	25.0	20.0	350.0				3.3	
FE		218+65.00	R	AGG	10.0	25.0	20.0	350.0				3.3	
FE		220+00.00	L	AGG	10.0	50.0	50.0	1500.0				14.2	
FE		226+00.00	R	AGG	10.0	25.0	20.0	350.0				3.3	
FE		226+50.00	L	AGG	10.0	25.0	20.0	350.0				3.3	
FE		231+70.00	L	AGG	10.0	25.0	20.0	350.0				3.3	
INT	1650N	242+50.00	R	HMA	10.0	60.0	35.0	1225.0	11.4	136.1	61.3		
INT	1650N	242+60.00	L	HMA	10.0	60.0	30.0	1050.0	9.8	116.7	52.5		
FE		257+40.00	R	AGG	10.0	20.0	15.0	225.0				2.1	
FE		258+10.00	L	AGG	10.0	25.0	20.0	350.0				3.3	
FE		262+80.00	R	AGG	10.0	30.0	25.0	500.0				4.7	
MB		270+25.00	R	AGG	10.0	45.0	10.0	225.0				2.1	
PE		270+75.00	L	HMA	10.0	40.0	16.0	400.0	3.7	44.4	20.0		
FE		280+46.00	L	AGG	10.0	25.0	20.0	350.0				3.3	
FE		281+50.00	L	AGG	10.0	25.0	20.0	350.0				3.3	
PE		284+70.00	L	HMA	10.0	33.0	20.0	430.0	4.0	47.8	21.5		
MB		284+70.00	R	AGG	10.0	60.0	15.0	300.0				2.8	
FE		285+65.00	L	AGG	10.0	50.0	50.0	1500.0				14.2	
MB		292+10.00	R	AGG	10.0	50.0	10.0	250.0				2.4	
PE		292+28.00	L	HMA	10.0	37.0	20.0	470.0	4.4	52.2	23.5		
FE		296+15.00	R	AGG	10.0	25.0	20.0	350.0				3.3	
INT	1550N	297+35.00	R	HMA	10.0	44.0	25.0	675.0	6.3	75.0	33.8		
FE		297+50.00	L	AGG	10.0	35.0	30.0	675.0				6.4	
PE		307+10.00	L	HMA	10.0	45.0	18.0	495.0	4.6	55.0	24.8		
FE		309+35.00	L	HMA	10.0	25.0	15.0	262.5	2.5	29.2	13.1		
FE		310+75.00	L	AGG	10.0	20.0	15.0	225.0				2.1	
INT	1500N	323+70.00	L	HMA	10.0	52.0	30.0	930.0	8.7	103.3	46.5		
INT	1500N	323+70.00	R	HMA	10.0	50.0	30.0	900.0	8.4	100.0	45.0		
FE		324+10.00	L	AGG	10.0	25.0	25.0	437.5				4.2	
FE		336+50.00	L	AGG	10.0	25.0	20.0	350.0				3.3	
FE		343+60.00	L	AGG	10.0	20.0	15.0	225.0				2.1	
PE		348+50.00	R	HMA	10.0	35.0	25.0	562.5	5.3	62.5	28.1		
MB		348+70.00	R	HMA	10.0	30.0	1.0	150.0	1.4	16.7	7.5		
FE		350+00.00	L	AGG	10.0	64.0	50.0	1850.0				17.6	
PE		353+75.00	R	AGG	10.0	25.0	18.0	315.0				3.0	
MB		354+22.00	R	HMA	10.0	40.0	10.0	200.0	1.9	22.2	10.0		
PE		354+69.00	R	HMA	10.0	60.0	37.0	1295.0	12.1	143.9	64.8		
MB		365+00.00	R	AGG	10.0	50.0	10.0	250.0				2.4	
PE		365+10.00	L	HMA	10.0	37.0	25.0	587.5	5.5	65.3	29.4		
PE		366+45.00	L	HMA	10.0	50.0	30.0	900.0	8.4	100.0	45.0		
PE		375+00.00	R	HMA	10.0	32.0	16.0	336.0	3.1	37.3	16.8		
									TOTAL	213	2534	1140	268
									TONS	SY	POUNDS	TONS	

MODEL: Default
 FILE: \\nafile.psu\idirect-pw-bea\pwy.com\PIV\DOT\Documents\DOT Office\Director_7\Project\74A22\CADD\DATA\CAD\Sheet\DOT74A22-5-Reschedule.dwg

USER NAME = steffnmk	DESIGNED -	REVISED -
	DRAWN -	REVISED -
PLOT SCALE = 100,0000' / in.	CHECKED -	REVISED -
PLOT DATE = 12/13/2021	DATE -	REVISED -

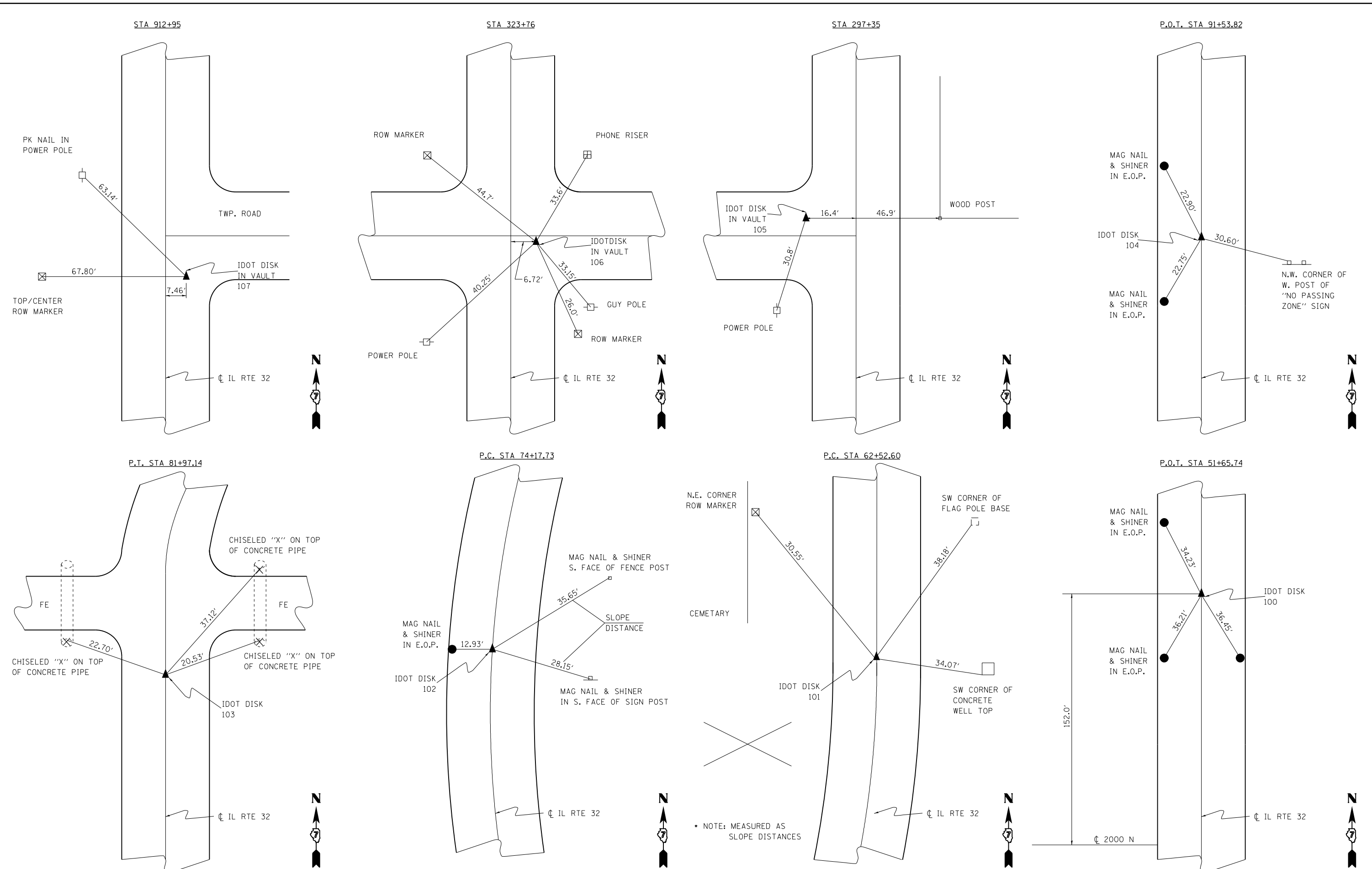
**STATE OF ILLINOIS
DEPARTMENT OF TRANSPORTATION**

SCHEDULE OF QUANTITIES

SCALE: SHEET OF SHEETS STA. TO STA.

F.A.P. RTE.	SECTION	COUNTY	TOTAL SHEETS	SHEET NO.
758	3RS-5,(4,5)RS-3	MOULTRIE	21	12
CONTRACT NO. 74A22				
ILLINOIS FED. AID PROJECT				

MODEL: Default
 FILE: 3dmodel.dwg
 PROJECT: 74A22
 USER: steffenmk
 DATE: 12/13/2021



USER NAME = steffenmk	DESIGNED -	REVISED -
DRAWN -	REVISED -	
PLOT SCALE = 5000.0000' / in.	CHECKED -	REVISED -
PLOT DATE = 12/13/2021	DATE -	REVISED -

STATE OF ILLINOIS
DEPARTMENT OF TRANSPORTATION

TIES			
SCALE:	SHEET	OF SHEETS	STA. TO STA.

F.A.P. RTE.	SECTION	COUNTY	TOTAL SHEETS	SHEET NO.
758	3RS-5.(4,5)RS-3	MOULTRIE	21	13
CONTRACT NO. 74A22				
ILLINOIS FED. AID PROJECT				



BRIDGE OMISSION
 STA 68+15.6 TO
 STA 68+40.4

PROJECT BEGINS
 STA 0+35

STATION EQUATION
 STA 285+99.7 (BK) =
 STA 284+64 (AH)

STATION EQUATION
 STA 376+86 (BK) =
 STA 913+00 (AH)

PROJECT ENDS
 STA 900+23

MODEL: Default
 FILE: \\mupc-pw-bentley.com\PWDOT\Documents\DOT_Offices\Director_7\Projects\74A22\CADD\DATA\CAD\Sheet\74A22-she14.dgn

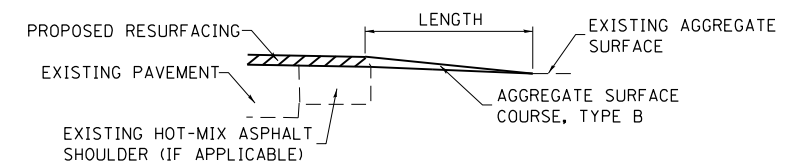
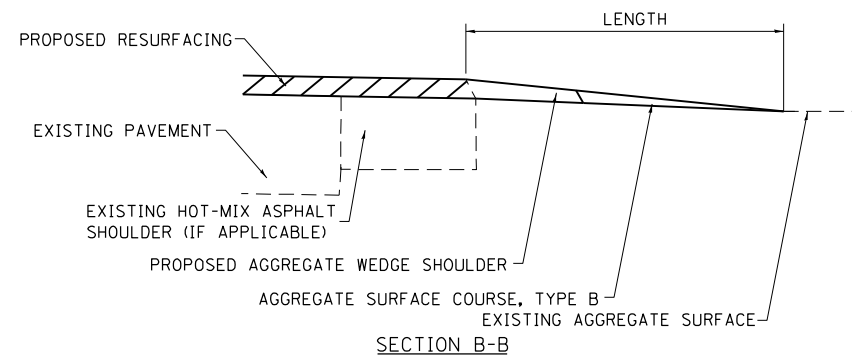
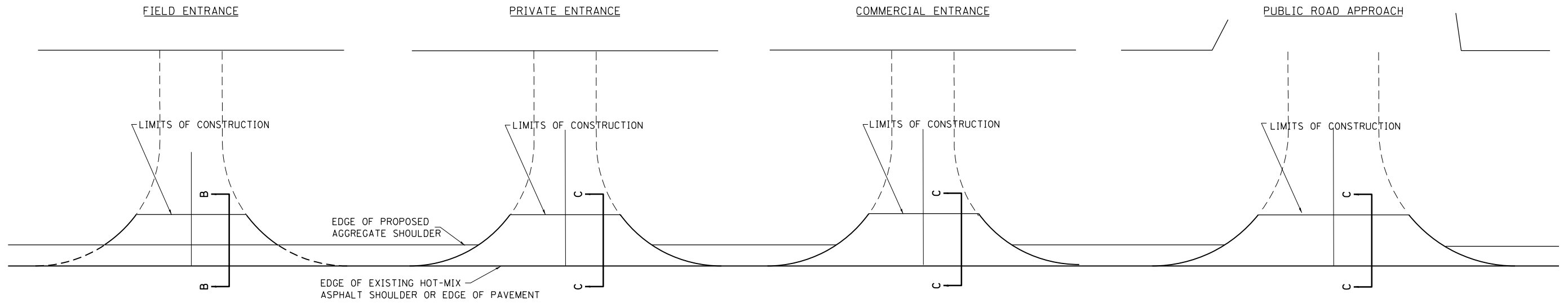
USER NAME = stefenmk	DESIGNED -	REVISED -
	DRAWN -	REVISED -
PLOT SCALE = 5000.0000 ' / in.	CHECKED -	REVISED -
PLOT DATE = 12/13/2021	DATE -	REVISED -

**STATE OF ILLINOIS
 DEPARTMENT OF TRANSPORTATION**

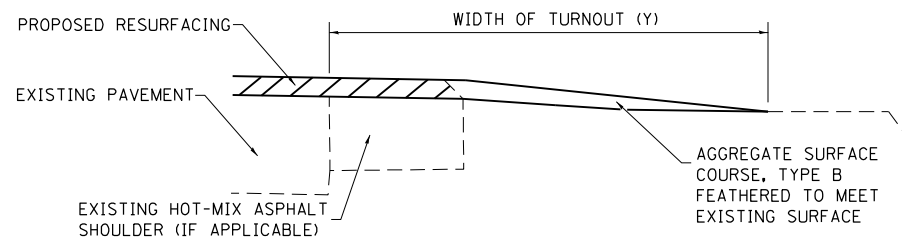
LOCATION MAP

SCALE: SHEET OF SHEETS STA. TO STA.

F.A.P. RTE.	SECTION	COUNTY	TOTAL SHEETS	SHEET NO.
758	3RS-5,(4,5)RS-3	MOULTRIE	21	14
CONTRACT NO. 74A22				
ILLINOIS FED. AID PROJECT				

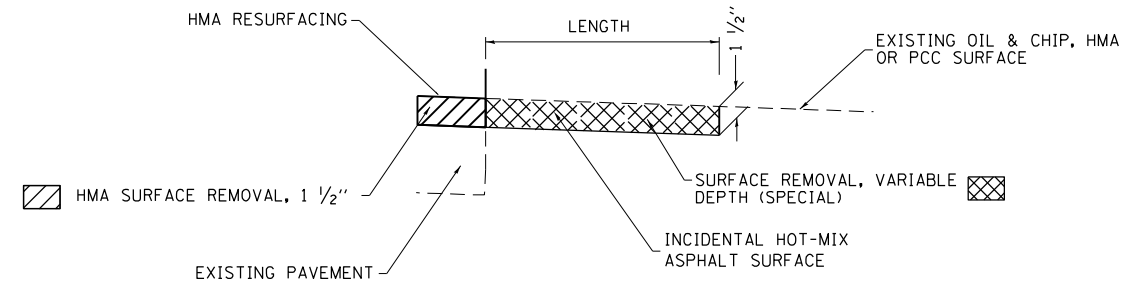


SECTION C-C



TYPICAL SECTION AT MAILBOX TURNOUT

NOTE: SEE STANDARD 406201 FOR MAILBOX TURNOUT DETAILS



SECTION C-C

NOTES

LENGTH = 10' UNLESS OTHERWISE NOTED ON PLANS

IF THERE IS NOT EXISTING HOT-MIX ASPHALT SHOULDER THEN THE ENTRANCE TAPER STARTS AT THE EDGE OF EXISTING PAVEMENT.

MODEL: Default
FILE: Mailbox Turnout.dwg
PROJECT: 74A22
DRAWN: J. B. B. / J. B. B.
CHECKED: J. B. B. / J. B. B.
DATE: 12/13/2021

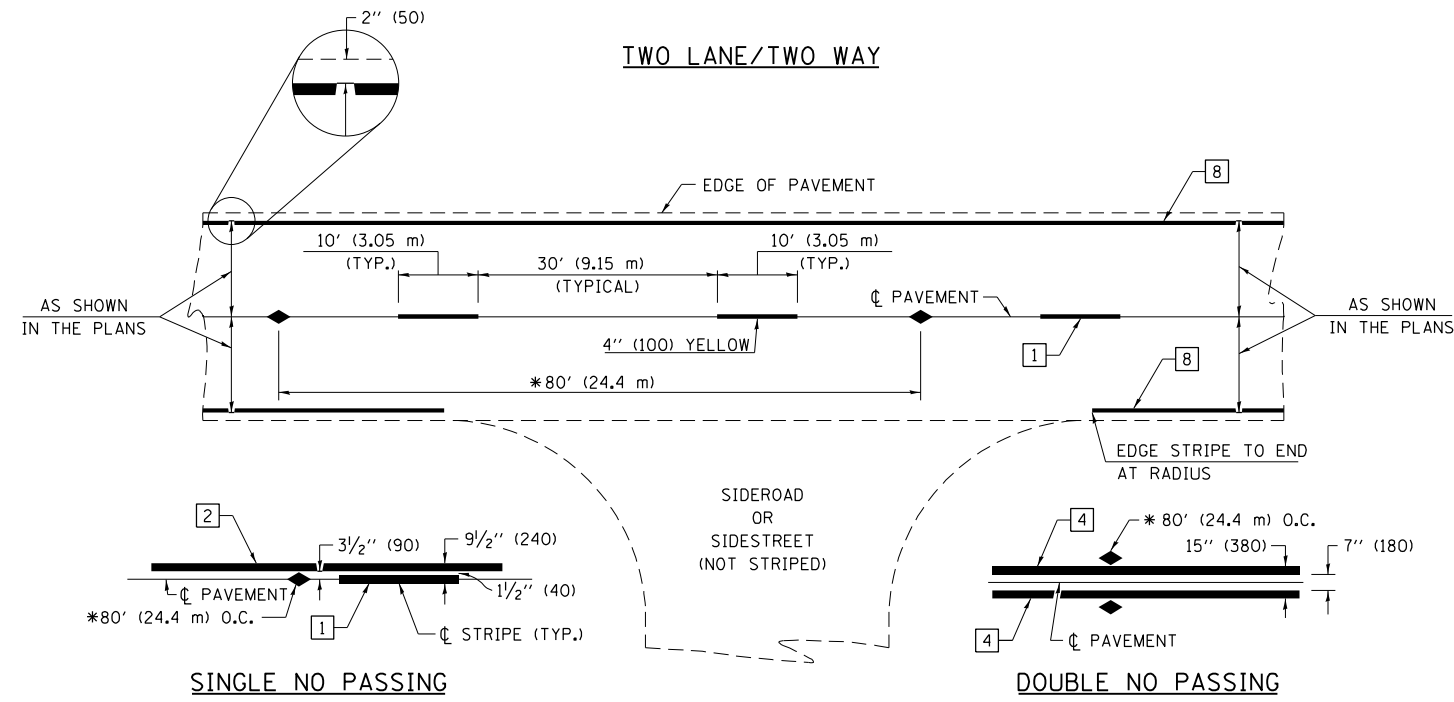
USER NAME = steffnmk	DESIGNED -	REVISED -
	DRAWN -	REVISED -
PLOT SCALE = 38,0000 * / in.	CHECKED -	REVISED -
PLOT DATE = 12/13/2021	DATE -	REVISED -

STATE OF ILLINOIS
DEPARTMENT OF TRANSPORTATION

RURAL ENTRANCE AND MAILBOX TURNOUT DETAILS

SCALE: SHEET OF SHEETS STA. TO STA.

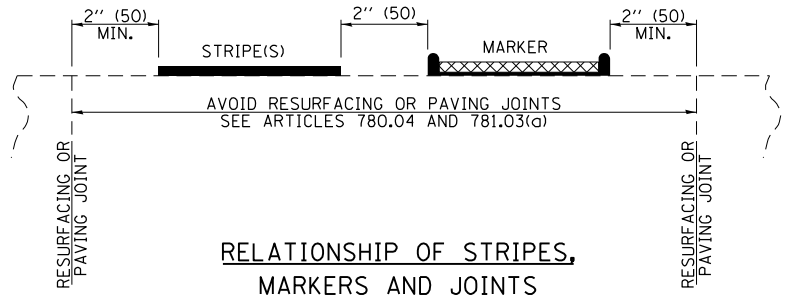
F.A.P. RTE. 758	SECTION 3RS-5,(4,5)RS-3	COUNTY MOULTRIE	TOTAL SHEETS 21	SHEET NO. 15
CONTRACT NO. 74A22			ILLINOIS FED. AID PROJECT	



* REDUCE TO 40' (12.2 m) O.C. ON CURVES WITH POSTED OR ADVISORY SPEEDS OF 45 mph (70 km/h) OR LESS.

PAVEMENT MARKING LEGEND

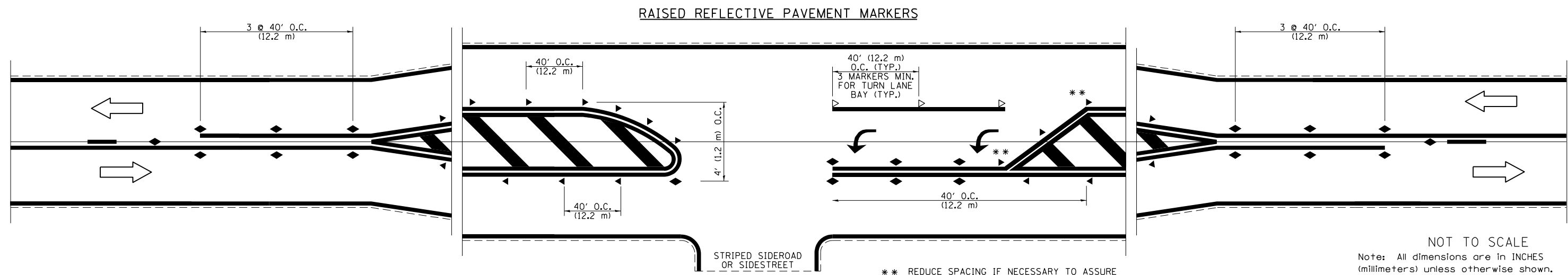
- 1 4" (100) SKIP-DASH (YELLOW)
- 2 4" (100) SOLID (YELLOW)
- 3 12" (300) DIAGONAL (YELLOW)
- 4 4" (100) DOUBLE YELLOW (NARROW)
- 5 12" (300) SOLID WHITE
- 6 RESERVED
- 7 6" (150) SKIP-DASH (WHITE)
- 8 4" (100) SOLID (WHITE)
- 9 12" (300) DIAGONAL (WHITE)
- 10 6" (150) SOLID (WHITE)
- 11 24" (600) STOP BAR (WHITE)
- 12 8" (200) SOLID (WHITE)
- 13 4" (100) PARKING WHITE



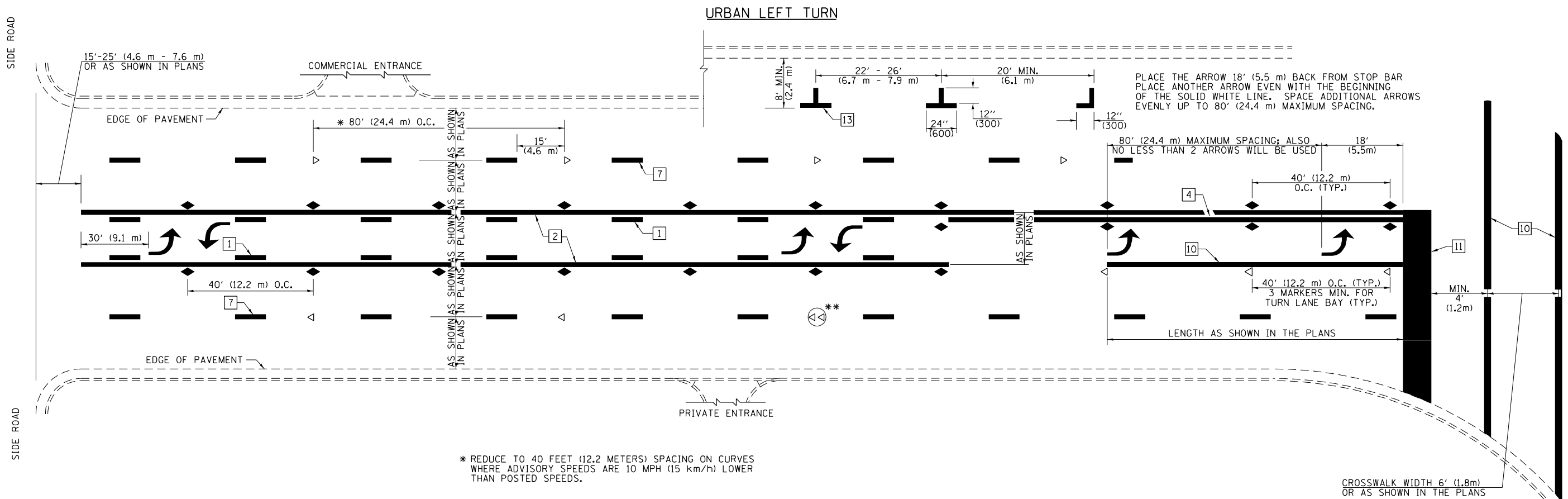
RELATIONSHIP OF STRIPES, MARKERS AND JOINTS

TYPICAL PAVEMENT MARKERS LEGEND

- ◆ TWO-WAY AMBER MARKER
- ▶ ONE-WAY AMBER MARKER
- ▷ ONE-WAY CRYSTAL MARKER



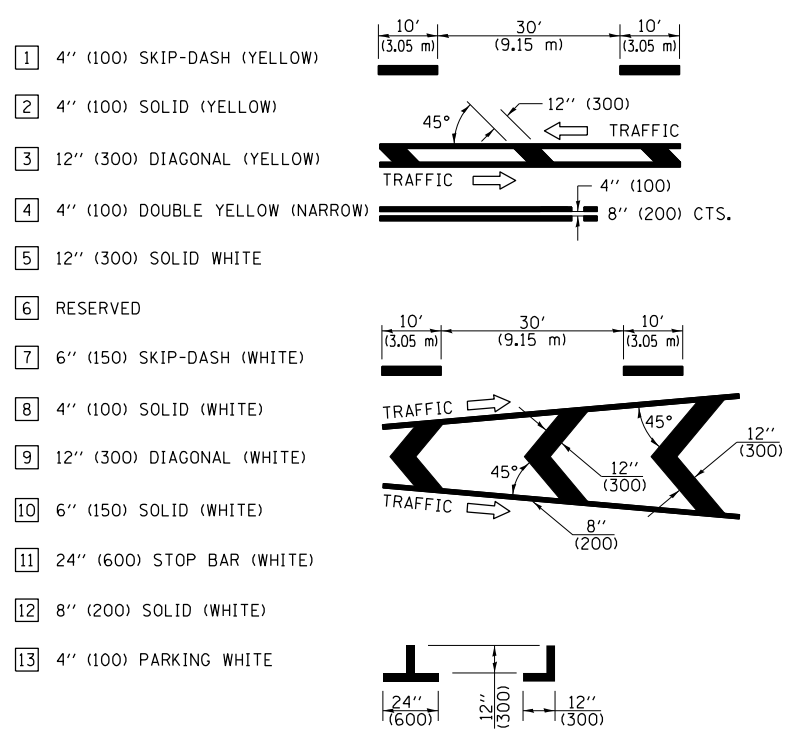
NOT TO SCALE
Note: All dimensions are in INCHES (millimeters) unless otherwise shown.



* REDUCE TO 40 FEET (12.2 METERS) SPACING ON CURVES WHERE ADVISORY SPEEDS ARE 10 MPH (15 km/h) LOWER THAN POSTED SPEEDS.

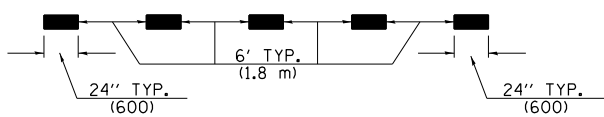
** DOUBLE LANE LINE MARKERS SHALL BE SPECIFIED AND SPACED AS SHOWN IN HIGHWAY STANDARD 781001 FOR MULTI-LANE DIVIDED AND UNDIVIDED HIGHWAYS.

PAVEMENT MARKING LEGEND

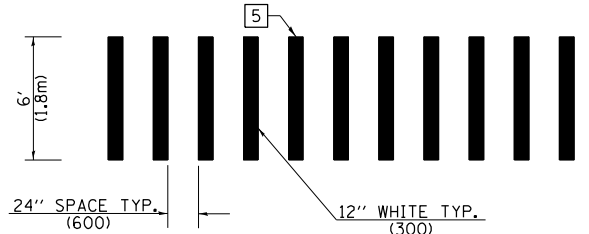


GENERAL NOTES

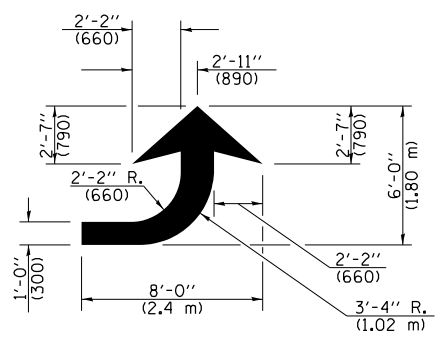
- TURN ARROW PAIRS SHALL BE PLACED AT 250' (75 m) INTERVALS AND SHALL BE EVENLY SPACED BETWEEN BOTH ENDS OF THE BIDIRECTIONAL LEFT TURN LANE. USE A MINIMUM OF TWO PAIRS PER BLOCK.
- THE SOLID YELLOW PAVEMENT MARKINGS [2] SHOULD GENERALLY START OR END NEAR THE RADIUS POINT OF EACH STREET RETURN EXCEPT WHERE ONE OR BOTH ENDS WOULD INCLUDE STOP BARS.
- THE SKIP-DASH PAVEMENT MARKINGS [1] OR [7] SHOULD BE CENTERED BETWEEN BOTH ENDS OF EACH CITY BLOCK AND SHALL BE PLACED SO THEY LINE UP ACROSS FROM EACH OTHER.
- USE LARGE ARROW SIZE FOR BOTH RURAL AND URBAN LOCATIONS. (SEE LAST PAGE OF SECTION 780x FOR SYMBOLS TABLE)
- LANE LINE EXTENSIONS SHALL BE THE SAME COLOR AND WIDTH AS THE LANE LINE BEING EXTENDED.



LANE LINE EXTENSIONS

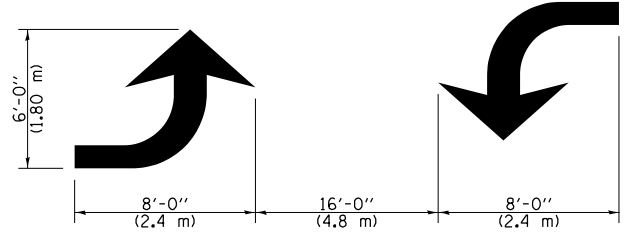


CROSSWALK DETAIL (DECATUR CITY LIMITS ONLY)



LEFT ARROW

REVERSE FOR RIGHT ARROW
AREA = 15.6 SQ. FT. (1.47 m²)
(WHITE)



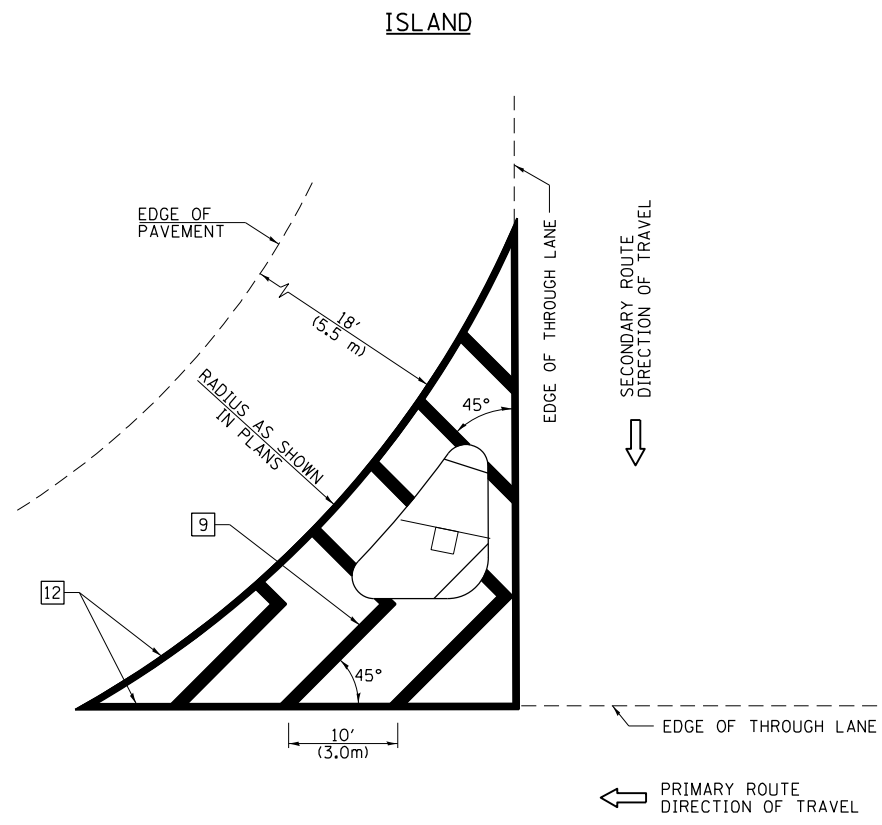
TYPICAL DOUBLE TURN ARROWS (WHITE)

NOT TO SCALE

Note: All dimensions are in INCHES (millimeters) unless otherwise shown.

DISTRICT 7 DETAIL NO. 7800001

FILE NAME =	USER NAME = steffenk	DESIGNED -	REVISED -	STATE OF ILLINOIS DEPARTMENT OF TRANSPORTATION	PAVEMENT MARKING AND RAISED REFLECTIVE PAVEMENT MARKERS (RURAL & URBAN APPLICATIONS)	F.A.P. RTE.	SECTION	COUNTY	TOTAL SHEETS	SHEET NO.
pw:\11dot-pw.bentley.com\PWIDOT\Documents\DOT Offices\District 7\Projects\74A22\CADD\Drawings\74A22-sht-details.dgn	DRAWN	REVISED -	REVISED -			758	3RS-5,(4,5)RS-3	MOULTRIE	21	17
PLOT SCALE = 40.0000' / in.	CHECKED -	REVISED -	REVISED -			CONTRACT NO. 74A22				
PLOT DATE = 12/13/2021	DATE -	REVISED -	REVISED -			ILLINOIS FED. AID PROJECT				

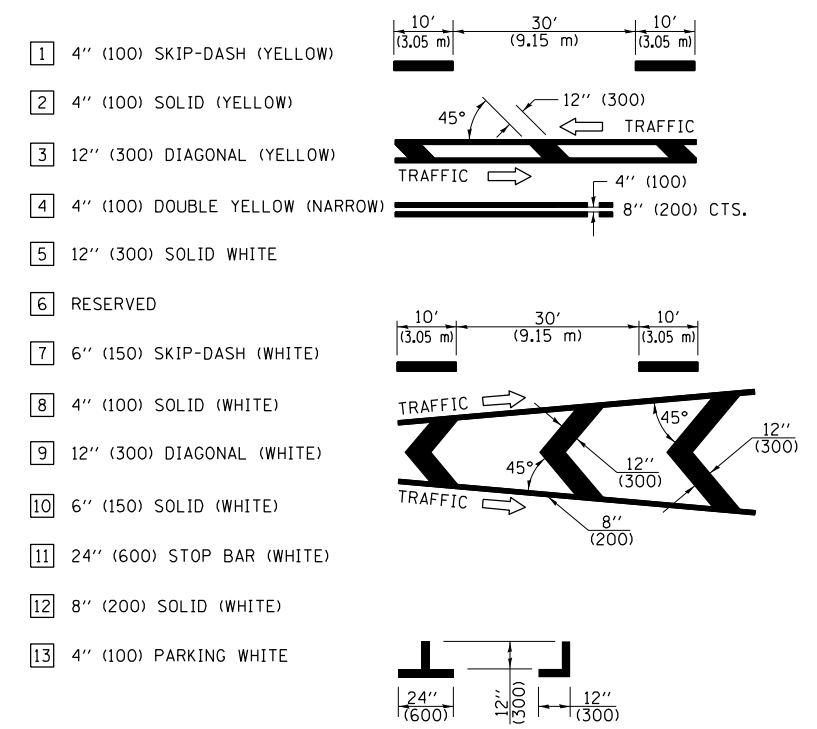


GENERAL NOTES

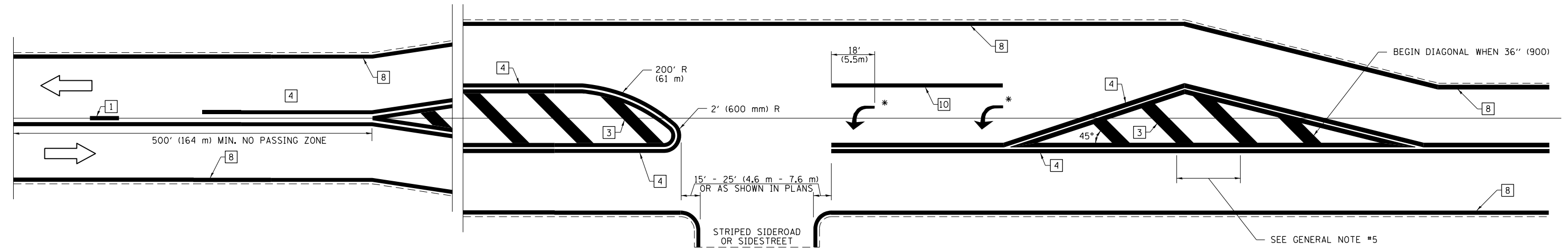
1. RAISED AND CORRUGATED MEDIANS SHALL BE OUTLINED WITH [2] IF PRESENT.
2. SOME OF THE INFORMATION INCLUDED WITH THIS DETAIL MAY NOT BE APPLICABLE TO THIS IMPROVEMENT.
3. PAVEMENT MARKINGS ARE TO BE EXTENDED THROUGH OMISSIONS WHEN APPLICABLE.
4. FINAL PAVEMENT MARKINGS SHALL BE IN PLACE PRIOR TO PLACING ANY RAISED REFLECTIVE PAVEMENT MARKERS.
5. THE FOLLOWING CRITERIA SHALL BE USED FOR SELECTING THE DIAGONAL PAVEMENT MARKING SPACING:

< 30 MPH (< 50 km/h)	15' (4.5 m)
30-45 MPH (50-75 km/h)	20' (6.0 m)
> 45 MPH (> 75 km/h)	30' (9.0 m)

PAVEMENT MARKING LEGEND



RURAL LEFT TURN STRIPING



* PLACE AN ARROW 18' (5.5 m) BACK FROM STOP BAR. PLACE ANOTHER ARROW EVEN WITH THE BEGINNING OF THE SOLID WHITE LINE. SPACE ADDITIONAL ARROWS EVENLY UP TO 80' (24.4 m) MAXIMUM SPACING. USE MINIMUM OF 2 ARROWS.

NOT TO SCALE
 Note: All dimensions are in INCHES (millimeters) unless otherwise shown.

DISTRICT 7 DETAIL NO. 7800001

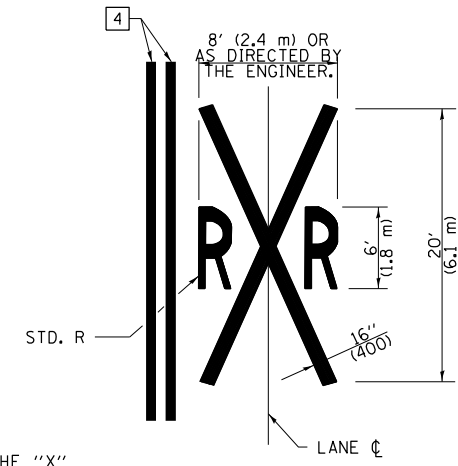
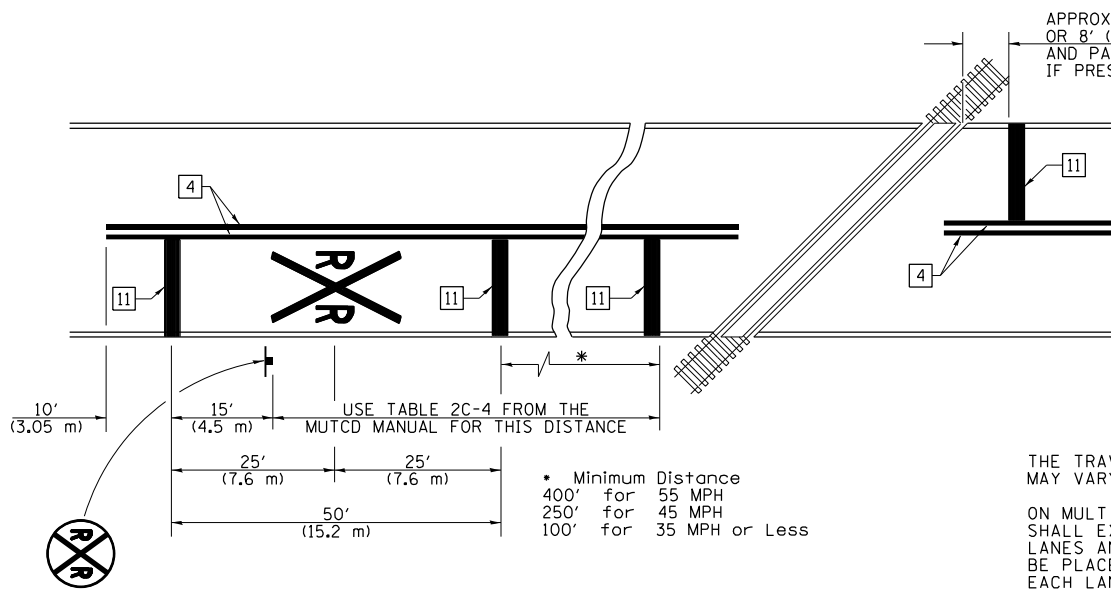
FILE NAME =	USER NAME = steffenk	DESIGNED -	REVISED -
pw:\idot-pw.bentley.com\PWIDOT\Documents\IDOT Offices\District 7\Projects\74A22\CADD\Drawings\Drawings\74A22-shd-details.dgn		CHECKED -	REVISED -
		DATE -	REVISED -

**STATE OF ILLINOIS
 DEPARTMENT OF TRANSPORTATION**

**PAVEMENT MARKING AND RAISED REFLECTIVE PAVEMENT MARKERS
 (RURAL & URBAN APPLICATIONS)**
 SCALE: SHEET NO. 3 OF 4 SHEETS STA. TO STA.

F.A.P. RTE.	SECTION	COUNTY	TOTAL SHEETS	SHEET NO.
758	3RS-5,(4,5)RS-3	MOULTRIE	21	18
CONTRACT NO. 74A22				
ILLINOIS FED. AID PROJECT				

PAVEMENT MARKINGS AT RAILROAD-HIGHWAY GRADE CROSSING



NOTES

THE TRAVERSE SPREAD OF THE "X" MAY VARY ACCORDING TO LANE WIDTH.

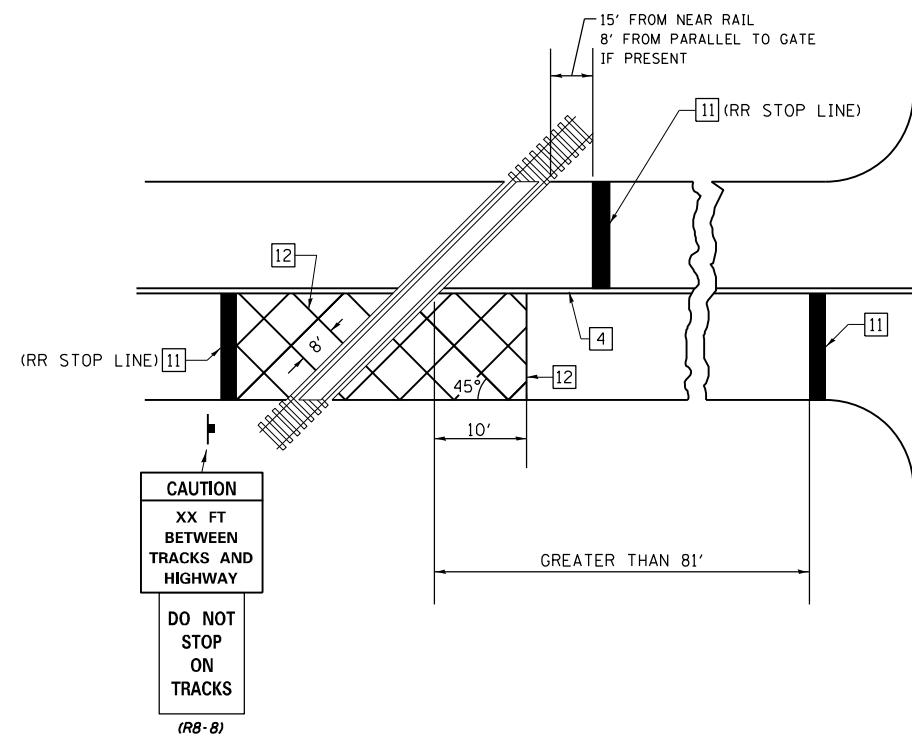
ON MULTI-LANE ROADS, THE STOP LINES SHALL EXTEND ACROSS ALL APPROACH LANES AND SEPARATE RXR SYMBOLS SHALL BE PLACED ADJACENT TO EACH OTHER IN EACH LANE.

WHEN THE PAVEMENT MARKING SYMBOL IS USED, A PORTION OF THE SYMBOL SHOULD BE LOCATED DIRECTLY ADJACENT TO THE ADVANCE WARNING SIGN (W10-1) AS PLACED BY TABLE II-1, CONDITION B OF THE MUTCD.

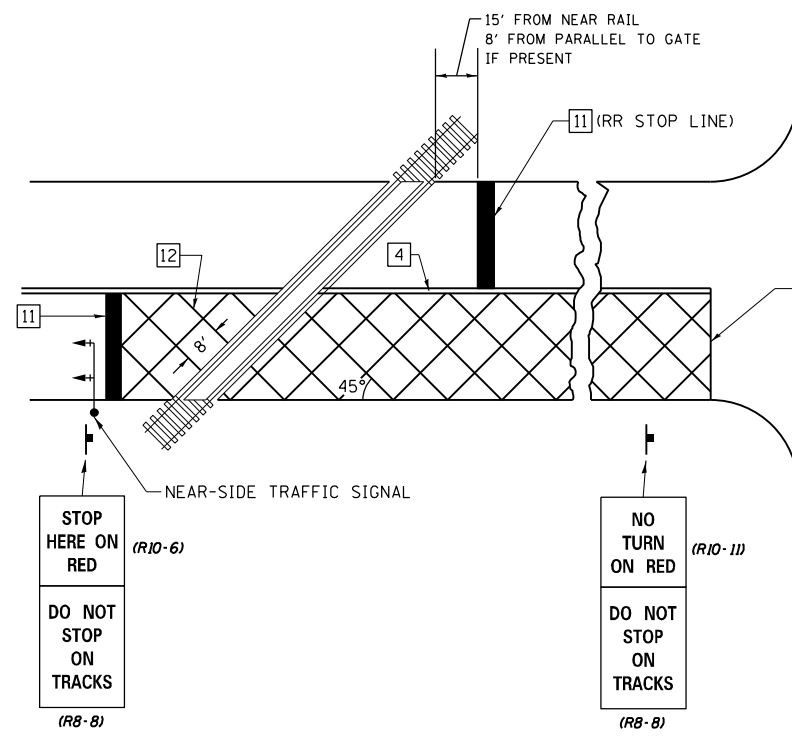
PAVEMENT MARKING LEGEND

- 1 4" (100) SKIP-DASH (YELLOW)
- 2 4" (100) SOLID (YELLOW)
- 3 12" (300) DIAGONAL (YELLOW)
- 4 4" (100) DOUBLE YELLOW (NARROW)
- 5 12" (300) SOLID WHITE
- 6 RESERVED
- 7 6" (150) SKIP-DASH (WHITE)
- 8 4" (100) SOLID (WHITE)
- 9 12" (300) DIAGONAL (WHITE)
- 10 6" (150) SOLID (WHITE)
- 11 24" (600) STOP BAR (WHITE)
- 12 8" (200) SOLID (WHITE)
- 13 4" (100) PARKING WHITE

RAILROAD CROSSING WITH INTERCONNECT ONLY



RAILROAD CROSSING WITH INTERCONNECT AND PRE-SIGNALS



SUPPLEMENTAL PAVEMENT MARKING TREATMENT FOR RAILROAD-HIGHWAY GRADE CROSSING

GENERAL NOTES

- SUPPLEMENTAL PAVEMENT MARKINGS TO BE INSTALLED ONLY ON APPROACHES TO INTERSECTIONS CONTROLLED BY TRAFFIC SIGNALS WHICH ARE INTERCONNECTED WITH THE RAILROAD WARNING SIGNALS.
- EXTEND PAVEMENT MARKINGS TO THE INTERSECTION ONLY WHERE NEAR-SIDE TRAFFIC SIGNALS ARE USED.

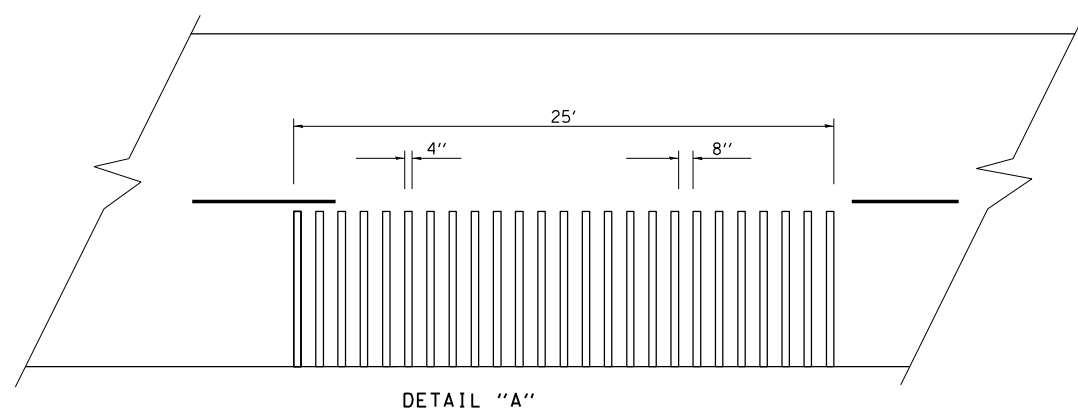
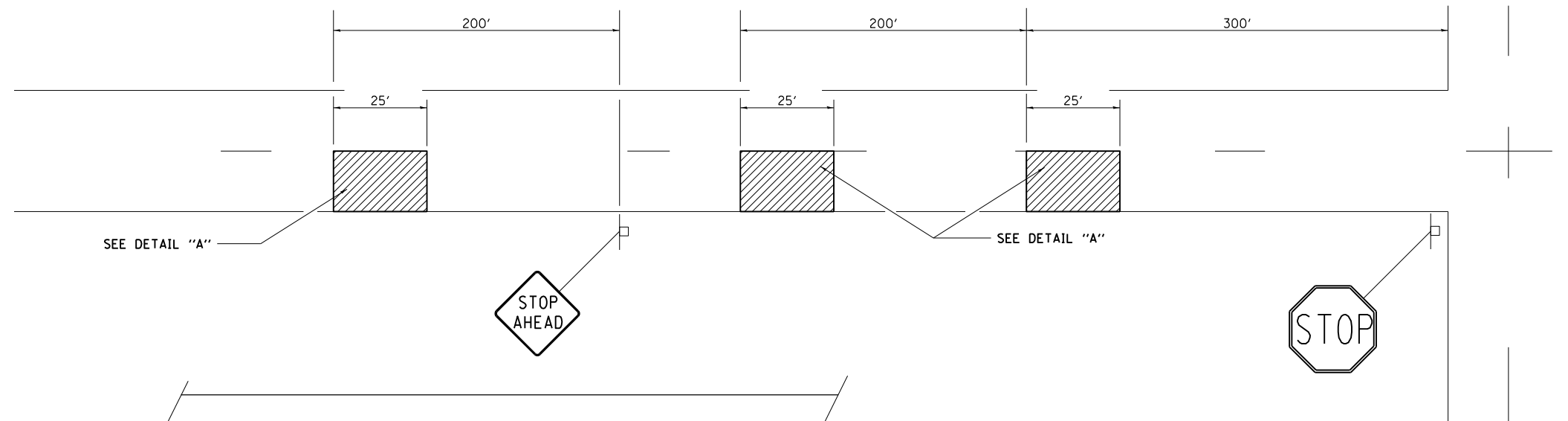
NOT TO SCALE

Note: All dimensions are in INCHES (millimeters) unless otherwise shown.

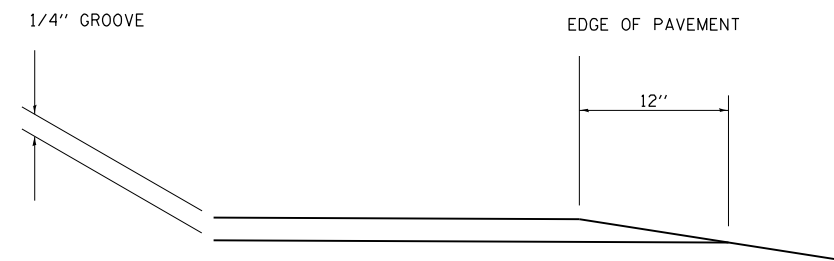
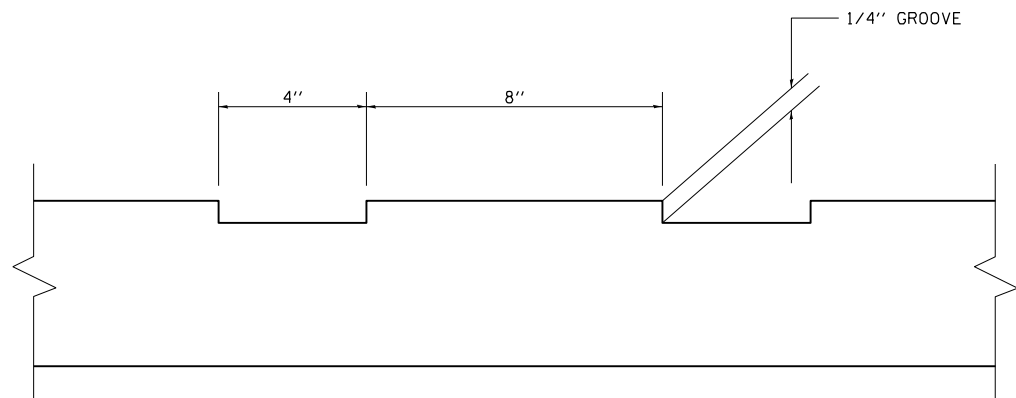
DISTRICT 7 DETAIL NO. 78000001

FILE NAME =	USER NAME = steffenk	DESIGNED -	REVISED -	STATE OF ILLINOIS DEPARTMENT OF TRANSPORTATION	PAVEMENT MARKING AND RAISED REFLECTIVE PAVEMENT MARKERS (RURAL & URBAN APPLICATIONS)	F.A.P. R.T.E.	SECTION	COUNTY	TOTAL SHEETS	SHEET NO.
pw:\1ldot-pw.bentley.com\PWIDOT\Documents\DOT Offices\District 7\Projects\74A22\CADD\Drawings\Drawings\74A22-sht-details.dgn	PLOT SCALE = 40.0000' / in.	CHECKED -	REVISED -			758	3RS-5,(4,5)RS-3	MOULTRIE	21	19
	PLOT DATE = 12/13/2021	DATE -	REVISED -			CONTRACT NO. 74A22				
						ILLINOIS FED. AID PROJECT				

TYPICAL RUMBLE STRIP APPLICATION IN ADVANCE OF AN INTERSECTION



NOTE: THE 25 FEET RUMBLE AREA HAS 4" WIDE GROOVES SAWED INTO THE PAVEMENT, SEPARATED BY 8" OF EXISTING PAVEMENT. THE SAW CUTS SHALL EXTEND 12" INTO THE SHOULDER TO ALLOW FOR DRAINAGE.



NOT TO SCALE

DISTRICT 7 DETAIL NO. Z0055300

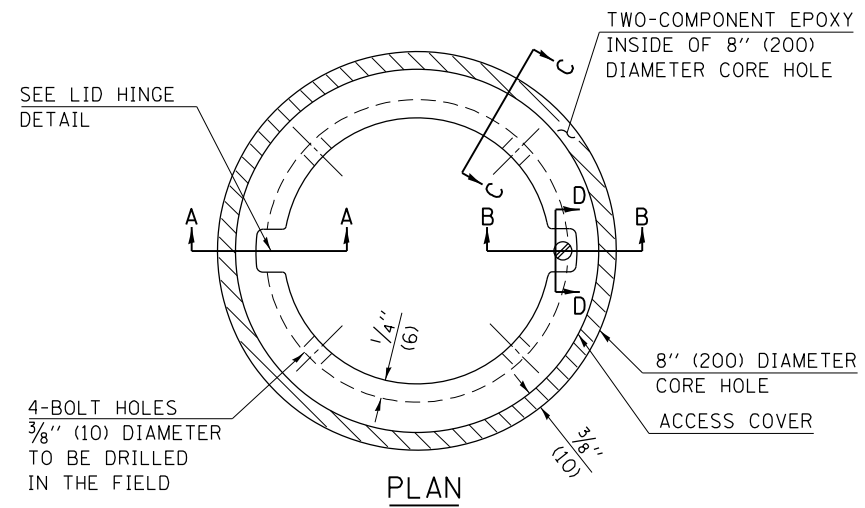
FILE NAME =	USER NAME = steffenk	DESIGNED -	REVISED - MMO 12-99
pw:\idot-pw.bentley.com\PWIDOT\Documents\IDOT Offices\District 7\Projects\74A22\CADD\Drawings\Drawings\74A22-shr-details.dgn		CHECKED -	REVISED - MKS 04-08
	PLOT SCALE = 40.0000' / in.	DATE -	REVISED -
	PLOT DATE = 12/13/2021		

**STATE OF ILLINOIS
DEPARTMENT OF TRANSPORTATION**

TYPICAL RUMBLE STRIP APPLICATION

SCALE: SHEET NO. OF SHEETS STA. TO STA.

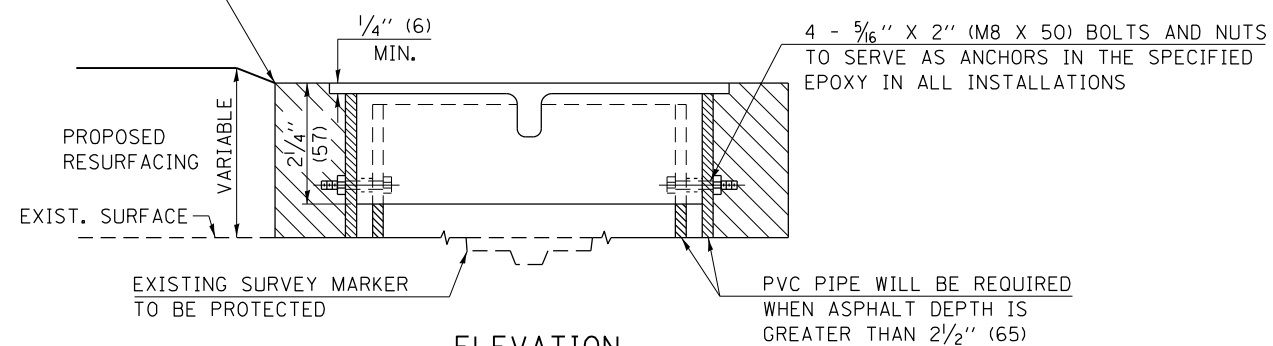
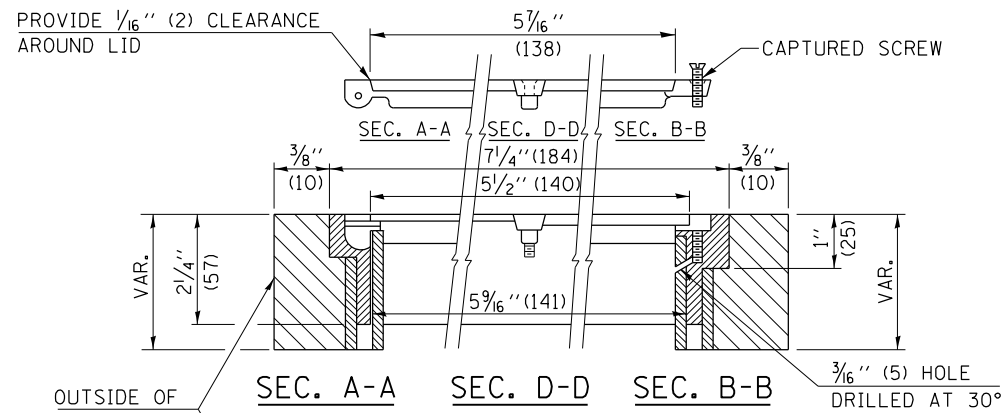
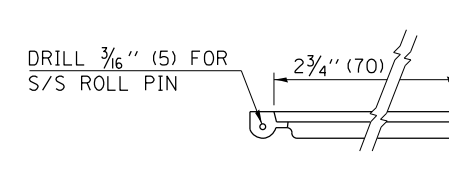
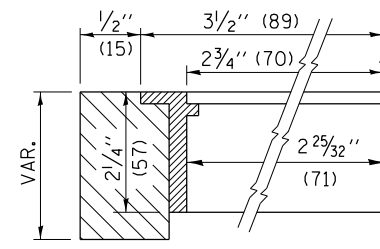
F.A.P. RTE.	SECTION	COUNTY	TOTAL SHEETS	SHEET NO.
758	3RS-5,(4,5)RS-3	MOULTRIE	21	20
CONTRACT NO. 74A22				
FED. ROAD DIST. NO. ILLINOIS FED. AID PROJECT				



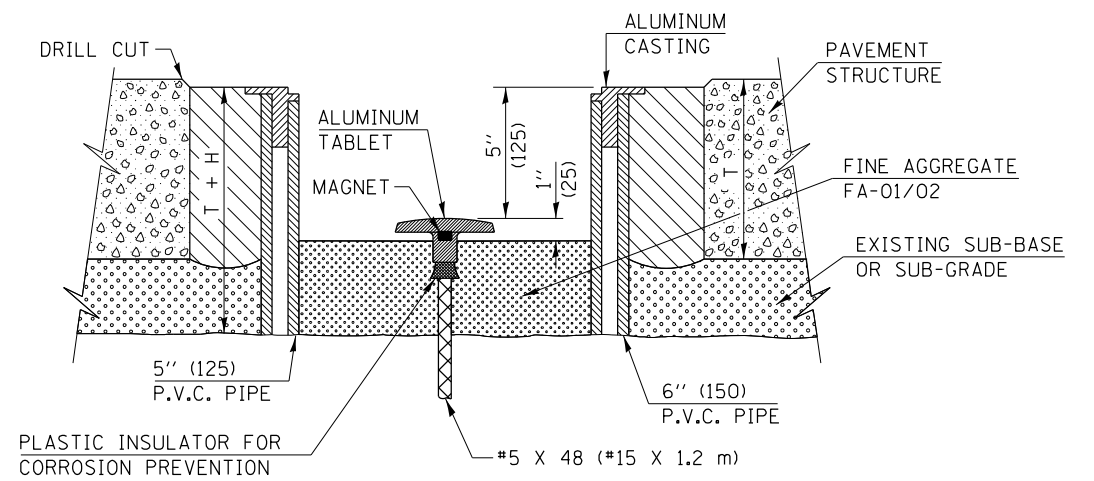
LEGEND

- ALUMINUM CASTING
- 5" (125) OR 6" (150) P.V.C. PIPE
- TWO-COMPONENT EPOXY
- T = THICKNESS OF PAVEMENT STRUCTURE
- H = THE THICKNESS OF THE SUB-BASE GRANULAR + 1" (25)

BILL OF MATERIAL	
ALUMINUM CASTING OF THE DIMENSIONS AND SPECIFICATIONS SHOWN OR OTHER SUBJECT TO ENGINEER'S APPROVAL OF SHOP DRAWINGS, 4 EACH - 5/16" X 2" (M8 X 50) BOLTS WITH NUTS, EPOXY, 5" OR 6" (125 mm OR 150 mm) DIAMETER P.V.C. PIPE, SCHEDULE 40 (WHEN REQUIRED).	



EXISTING SURVEY MARKER



PROPOSED SURVEY MARKER

NOT TO SCALE
 Note: All dimensions are in INCHES (millimeters) unless otherwise shown.

DISTRICT 7 DETAIL NO. Z0070202

FILE NAME =	USER NAME = steffenk	DESIGNED -	REVISED - MAD 6-11
p:\dot-pw\bentley.com\PWIDOT\Documents\DOT Offices\District 7\Projects\74A22\CADD\Drawings\Drawings\74A22-shd-details.dgn		CHECKED -	REVISED -
PLOT SCALE = 40.0000' / in.		DATE -	REVISED -
PLOT DATE = 12/13/2021			

**STATE OF ILLINOIS
 DEPARTMENT OF TRANSPORTATION**

SURVEY MARKER VAULT

SCALE:	SHEET NO.	OF SHEETS	STA.	TO STA.
--------	-----------	-----------	------	---------

F.A.P. RTE.	SECTION	COUNTY	TOTAL SHEETS	SHEET NO.
758	3RS-5,(4,5)RS-3	MOULTRIE	21	21
CONTRACT NO. 74A22				
FED. ROAD DIST. NO. ILLINOIS FED. AID PROJECT				