

STATE OF ILLINOIS
DEPARTMENT OF TRANSPORTATION

F.A.P. RTE.	SECTION	COUNTY	TOTAL SHEETS	SHEET NO.
824	D7 AGG SHLD 2022-1	COLES	3	1
		ILLINOIS	CONTRACT NO. 74A82	

FOR INDEX OF SHEETS, SEE SHEET NO. 2
ADT=2650 (2019)

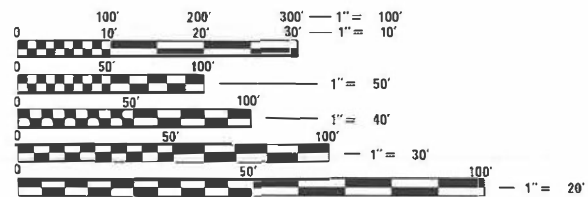
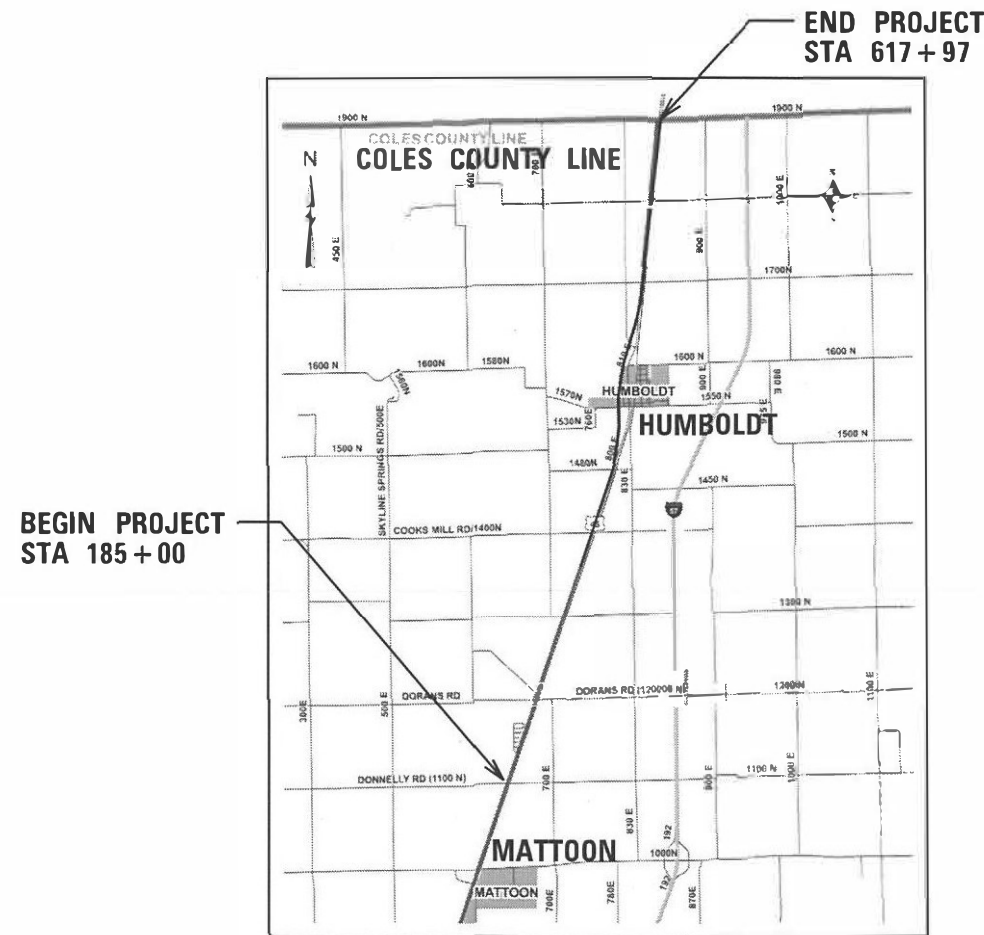
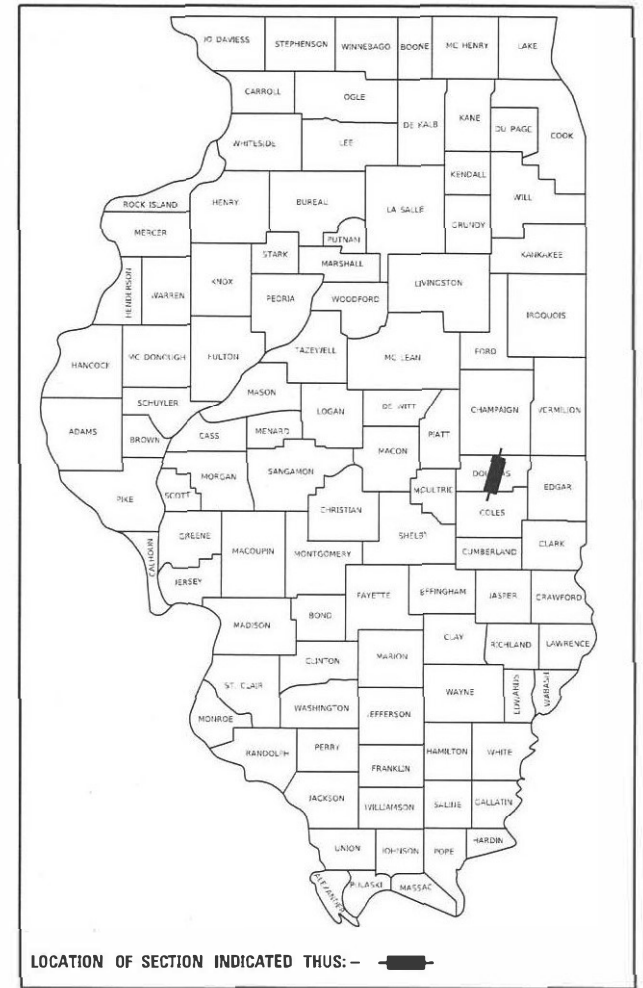
**PROPOSED
HIGHWAY PLANS**

FAP ROUTE 824 (US 45)
SECTION D7 AGG SHLD 2022-1

SHOULDER RECONSTRUCTION
COLES COUNTY

C-97-182-21

D-97-113-21



FULL SIZE PLANS HAVE BEEN PREPARED USING STANDARD ENGINEERING SCALES. REDUCED SIZED PLANS WILL NOT CONFORM TO STANDARD SCALES. IN MAKING MEASUREMENTS ON REDUCED PLANS, THE ABOVE SCALES MAY BE USED.

J.U.L.I.E.
JOINT UTILITY LOCATION INFORMATION FOR EXCAVATORS
1-800-892-0123
OR 811

PROJECT ENGINEER: DEBRA BARRETT
PROJECT MANAGER: DREW HEUERMAN

CONTRACT NO. 74A82

NET LENGTH = 43,297 FT. = 8.32 MILE

STATE OF ILLINOIS
DEPARTMENT OF TRANSPORTATION

SUBMITTED December 16, 2021
Jeffrey P. Mynick
REGIONAL ENGINEER

February 4, 2022
[Signature]
ENGINEER OF DESIGN AND ENVIRONMENT

February 4, 2022
Stephen M. Fair
DIRECTOR OF HIGHWAYS PROJECT IMPLEMENTATION

PRINTED BY THE AUTHORITY
OF THE STATE OF ILLINOIS

GENERAL NOTES

THIS PROJECT IS LOCATED ON US ROUTE 45 IN COLES COUNTY. THE PROJECT STARTS AT THE DOUGLAS COUNTY LINE AND EXTENDS SOUTH FOR APPROXIMATELY 8.32 MILES TO DONNELLY ROAD (1100 N).

THE WORK INCLUDED IN SECTION D7 AGG SHLD 2022-1 CONSISTS OF PLACING AGGREGATE SHOULDERS, TRAFFIC CONTROL, AND ANY OTHER WORK NECESSARY TO COMPLETE THE SECTION.

ALL MATERIAL USED FOR AGGREGATE SHOULDERS, TYPE B SHALL BE CRUSHED STONE WITH A MINIMUM IBR OF 80. RAP IS NOT ALLOWED.

AGGREGATE FOR MAILBOX TURNOUTS AND PRIVATE ENTRANCES SHALL BE PLACED AS DIRECTED BY THE ENGINEER AND WILL BE PAID FOR AS AGGREGATE SHOULDERS, TYPE B.

A RATE OF APPLICATION OF 2.05 TONS/CU YD HAS BEEN USED IN CALCULATING PLAN QUANTITY.

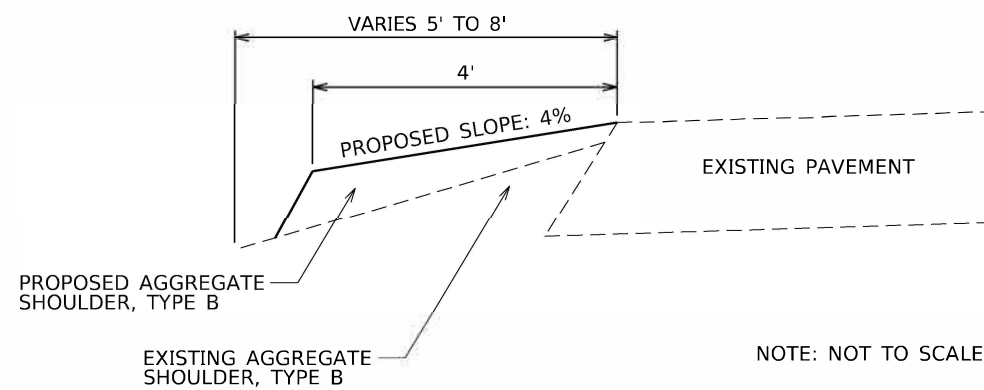
INDEX OF SHEETS

SHEET NO.	ITEM
1	COVER SHEET
2	INDEX OF SHEETS, GENERAL NOTES AND SHOULDER DETAIL
3	SUMMARY OF QUANTITIES

THE FOLLOWING STANDARDS ARE A PART OF THESE PLANS AND ARE INCLUDED AFTER SHEET NO. 4:

STD. NO.	DESCRIPTION
000001-08	STANDARD SYMBOLS, ABBREVIATIONS AND PATTERNS
406201-01	MAILBOX TURNOUT
701001-02	OFF-ROAD OPERATIONS, 2L, 2W, MORE THAN 15' AWAY
701006-05	OFF-RD OPERATIONS, 2L, 2W, 15' TO 24" FROM PAVEMENT EDGE
701011-04	OFF-RD MOVING OPERATIONS, 2L, 2W, DAY ONLY
701301-04	LANE CLOSURE, 2L, 2W, SHORT TIME OPERATIONS
701306-04	LANE CLOSURE, 2L, 2W, SLOW MOVING OPERATIONS, DAY ONLY, FOR SPEEDS ≥ 45 MPH
701901-08	TRAFFIC CONTROL DEVICES
001006	DECIMAL OF AN INCH AND OF A FOOT

SHOULDER DETAIL (NORTHBOUND AND SOUTHBOUND)



REV. - MS

Model: Default
 File Name: p:\w\dot\p\berkeley.com\FWIDDOT\Documents\DOT_Offices\District_7\Projects\74A82\CADD\31\CD\Sheets\SD774A82-sht-genote.dgn

USER NAME = Drew Heuerman	DESIGNED -	REVISED -
PLOT SCALE = 100.000 1/in.	DRAWN -	REVISED -
PLOT DATE = 11/18/2021	CHECKED -	REVISED -
	DATE -	REVISED -

STATE OF ILLINOIS
 DEPARTMENT OF TRANSPORTATION

INDEX OF SHEETS, GENERAL NOTES, AND SHOULDER DETAIL

SCALE: SHEET 2 OF 3 SHEETS STA. TO STA.

F.A.P. RTE.	SECTION	COUNTY	TOTAL SHEETS	SHEET NO.
824	D7 AGG SHLD 2022-1	COLES	3	2
			CONTRACT NO. 74A82	
ILLINOIS FB. AID PROJECT				

100% STATE

SUMMARY OF QUANTITIES

CODE NO	ITEM	UNIT	TOTAL QUANTITIES	CONSTRUCTION TYPE CODE		
				0021	Col 2	Col 3
48101200	AGGREGATE SHOULDERS, TYPE B	TON	4296	4296		
67100100	MOBILIZATION	L SUM	1	1		
70100460	TRAFFIC CONTROL AND PROTECTION, STANDARD	L SUM	1	1		
	701306					
70107025	CHANGEABLE MESSAGE SIGN	CAL DA	28	28		

MODEL: Default
FILE NAME: p:\ultra-cw-beach\p\win\DOT\Documents\DOT_offices\Dir\dir_7\Project\74A82\CADD\DATA\CAD\SheetID74A82-sh-SQO.dgn

USER NAME = steffenmk	DESIGNED - Drew Heuerman	REVISED -
	DRAWN -	REVISED -
PLOT SCALE = 100,0000 ' / in.	CHECKED -	REVISED -
PLOT DATE = 12/15/2021	DATE -	REVISED -

STATE OF ILLINOIS DEPARTMENT OF TRANSPORTATION

SUMMARY OF QUANTITIES				
SCALE:	SHEET 1	OF 1	SHEETS	STA. TO STA.

F.A.P. RTE.	SECTION	COUNTY	TOTAL SHEETS	SHEET NO.
824	D7 AGG SHLD 2022-1	COLES	3	3
CONTRACT #: 74A82				
ILLINOIS FED. AID PROJECT				