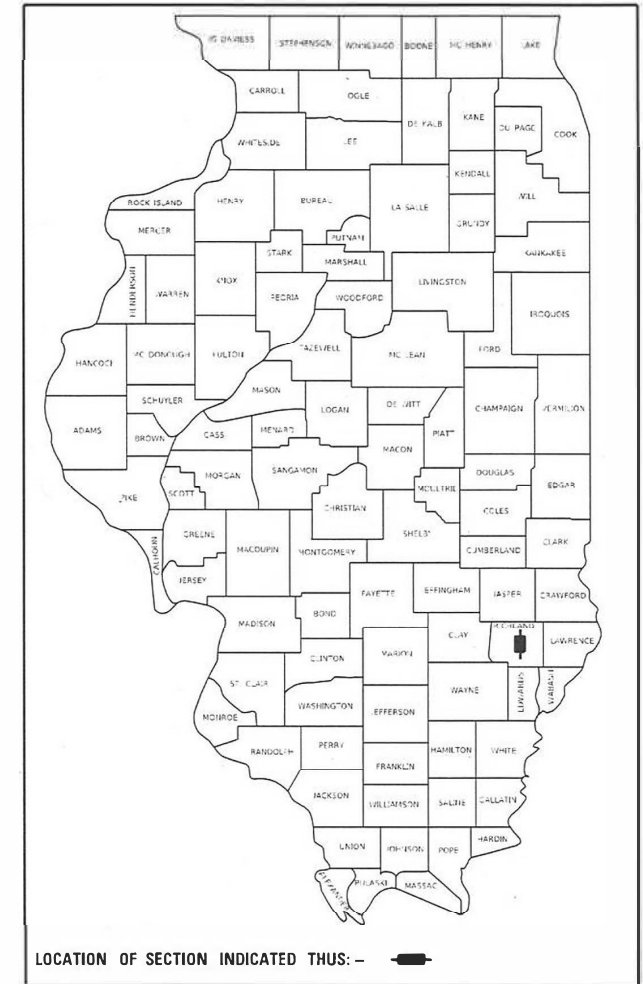


STATE OF ILLINOIS  
DEPARTMENT OF TRANSPORTATION

F.A.P. RTE.	SECTION	COUNTY	TOTAL SHEETS	SHEET NO.
116	(124Z)RS-4,(5-2)123 RS-3	RICHLAND	16	1
ILLINOIS		CONTRACT NO. 74962		

D-97-038-20



LOCATION OF SECTION INDICATED THUS: - [Symbol]

**PROPOSED  
HIGHWAY PLANS**

FAP ROUTE 116 (ILL 130)  
SECTION (124Z)RS-4,(5-2)123 RS-3  
PROJECT STP-XZUQ(878)  
HMA INLAY  
RICHLAND COUNTY  
C-97-040-20

FOR INDEX OF SHEETS, SEE SHEET NO. 2

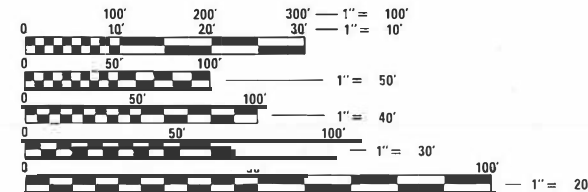
ADT YR 2019 - 8300

PROJECT BEGINS  
STATION 21+17



PROJECT ENDS  
STATION 55+00

GROSS LENGTH = 3383 FT. = 0.64 MILE  
NET LENGTH = 3383 FT. = 0.64 MILE



FULL SIZE PLANS HAVE BEEN PREPARED USING STANDARD ENGINEERING SCALES. REDUCED SIZED PLANS WILL NOT CONFORM TO STANDARD SCALES. IN MAKING MEASUREMENTS ON REDUCED PLANS, THE ABOVE SCALES MAY BE USED.

J.U.L.I.E.  
JOINT UTILITY LOCATION INFORMATION FOR EXCAVATORS  
1-800-892-0123  
OR 811

PROJECT ENGINEER: BRIAN LEWIS 217-342-8360  
PROJECT MANAGER: MYRA OLTMAN 217-342-8246

CONTRACT NO. 74962

STATE OF ILLINOIS  
DEPARTMENT OF TRANSPORTATION

SUBMITTED January 4 20 22  
*Jeffrey P. Mynier*  
REGIONAL ENGINEER

February 4 2022  
*[Signature]*  
ENGINEER OF DESIGN AND ENVIRONMENT

February 4 2022  
*Stephen M. Lewis*  
DIRECTOR OF HIGHWAYS PROJECT IMPLEMENTATION

PRINTED BY THE AUTHORITY  
OF THE STATE OF ILLINOIS

### GENERAL NOTES

THE WORK INCLUDED IN SECTION (124Z)RS-4,(5-21)123 RS-3 CONSISTS OF HMA SURFACE REMOVAL, TACK COAT, HMA BINDER COURSE, HMA SURFACE COURSE, PAVEMENT REMOVAL AND PCC PAVEMENT REPLACEMENT, STORM SEWER CLEANING, CURB AND GUTTER REMOVAL AND REPLACEMENT, CMP REMOVAL, PIPE CULVERT REPLACEMENT, RAISED REFLECTIVE PAVEMENT MARKER REMOVAL AND REPLACEMENT, GROOVED IN THERMOPLASTIC PAVEMENT MARKING, AND OTHER WORK NECESSARY TO COMPLETE THIS SECTION. A MARKED DETOUR WILL BE UTILIZED FOR CONSTRUCTION OF THE PAVEMENT UNDER THE RR STRUCTURE. STAGE CONSTRUCTION WILL BE UTILIZED FOR THE HMA SURFACE REMOVAL AND HMA BINDER AND SURFACE CONSTRUCTION.

PCC PAVEMENT MIXTURE SHALL BE PP1 .

THE CONTRACTOR SHALL COORDINATE WITH CSX RAILROAD TO SECURE RIGHT OF ENTRY FOR WORK WITHIN THE RAILROAD RIGHT-OF-WAY AT THE EXISTING GRADE SEPARATED CROSSING. IN ADDITION, FLAGGING MAY BE NECESSARY FOR WORK WITHIN 25 FEET LATERALLY FROM THE NEAREST RAIL. REIMBURSEMENT FOR THE COST OF FLAGGING WILL BE IN ACCORDANCE WITH ARTICLE 107.12 OF THE STANDARD SPECIFICATIONS.

SHORT TERM PAVEMENT MARKING APPLIED TO ALL MILLED SURFACE SHALL BE PAINT AND THOSE APPLIED TO THE HMA COURSE SHALL BE TAPE.

QUANTITIES FOR THERMOPLASTIC PAVEMENT MARKING LINES ARE YELLOW.

QUANTITIES FOR RAISED REFLECTIVE PAVEMENT MARKERS ARE AMBER.

QUANTITIES FOR THERMOPLASTIC PAVEMENT MARKING - LETTERS AND SYMBOLS ARE WHITE.

THE FOLLOWING RATES OF APPLICATION HAVE BEEN USED IN CALCULATING PLAN QUANTITIES:

BITUMINOUS MATERIALS (TACK COAT)	0.05 LBS/SQ FT	MILLED SURFACE
	0.025 LBS/SQ FT	BETWEEN LIFTS
HOT-MIX ASPHALT	112 LBS/SQ YD/IN	

#### MATERIAL REQUIREMENTS

APPLICATION	AC/PG	DESIGN AIR VOIDS	MIXTURE COMPOSITION	FRICTION AGGREGATE	QUALITY MANAGEMENT
POLYMERIZED HMA SURFACE COURSE, MIX "D", N90 (2")	SBS PG 70-22	4.0% @ N=90	IL - 9.5	MIXTURE D	QCP
POLYMERIZED HMA BINDER COURSE, IL-9.5FG, N90, (1 3/4")	SBS PG 70-22	4.0% @ N=90	IL - 9.5FG	N/A	QCP
INCIDENTAL HMA SURFACING	PG 64-22	4.0% @ N=70	IL - 9.5	MIXTURE C	QC/QA
CLASS "D" PAVEMENT PATCHING	PG 64-22	4.0% @ N=90	IL - 19.0	N/A	QC/QA

### INDEX OF SHEETS

1	COVER SHEET
2	GENERAL NOTES, INDEX OF SHEETS, AND HIGHWAY STANDARDS
3-5	SUMMARY OF QUANTITIES
6	TYPICAL SECTIONS
7	SCHEDULE OF QUANTITIES
8-11	PLAN SHEETS
12-15	DISTRICT 7 PAVEMENT MARKING DETAILS
16	MARKED DETOUR SHEET

THE FOLLOWING STANDARDS ARE A PART OF THESE PLANS AND ARE INCLUDED FOLLOWING THE LAST NUMBERED SHEET OF THE PLANS.

000001-08	STANDARD SYMBOLS, ABBREVIATIONS, AND PATTERNS
001001-02	AREAS OF REINFORCEMENT BARS
001006	DECIMAL OF AN INCH AND OF A FOOT
420001-10	PAVEMENT JOINTS
420101-07	24' JOINTED PCC PAVEMENT
420111-04	PCC PAVEMENT ROUNDOUTS
420701-03	PAVEMENT WELDED WIRE REINFORCEMENT
442201-03	CLASS C AND D PATCHES
542001-06	CONCRETE END SECTIONS FOR PIPE CULVERTS 15" THRU 84" DIA.
542301-03	PRECAST REINFORCED CONCRETE FLARED END SECTION
606001-08	CONCRETE CURB TYPE B AND COMBINATION CONCRETE CURB AND GUTTER
701001-02	OFF-RD OPERATIONS, 2L, 2W, MORE THAN 15' (4.5 M) AWAY
701006-05	OFF-RD OPERATIONS, 2L, 2W, 15' (4.5 M) TO 24" (600 MM) FROM PAVEMENT EDGE
701501-06	URBAN LANE CLOSURE, 2L 2W, UNDIVIDED
701502-09	URBAN LANE CLOSURE, 2L 2W, WITH BIDIRECTIONAL LEFT TURN LANE
701901-08	TRAFFIC CONTROL DEVICES
780001-05	TYPICAL PAVEMENT MARKINGS
781001-04	TYPICAL APPLICATIONS RAISED REFLECTIVE PAVEMENT MARKERS
BLR-21-9	TYPICAL APPLICATION OF TRAFFIC CONTROL DEVICES FOR CONSTRUCTION OF RURAL LOCAL HIGHWAYS
604006-05	FRAME AND GRATE, TYPE 3
667101-02	PERMANENT SURVEY MARKERS
668001-01	U.S. GEOLOGICAL SURVEY AND NATIONAL GEODEDIC SURVEY BENCHMARKS, RESETTING METHOD

REV. - MS

MODEL: Default  
 FILE NAME: P:\11624\11624.dwg  
 PROJECT: 11624  
 DRAWING: 11624-11624.dwg  
 DATE: 1/3/2022

USER NAME = steffennk DESIGNED - DRAWN - PLOT SCALE = 100.0000' / in. PLOT DATE = 1/3/2022	DESIGNED - DRAWN - CHECKED - DATE -	REVISED - REVISED - REVISED - REVISED -	STATE OF ILLINOIS DEPARTMENT OF TRANSPORTATION	GENERAL NOTES INDEX OF SHEETS AND HIGHWAY STANDARDS	SCALE: SHEET OF SHEETS STA. TO STA.	<table border="1" style="width: 100%; border-collapse: collapse;"> <tr> <th style="font-size: x-small;">F.A.P. RTE.</th> <th style="font-size: x-small;">SECTION</th> <th style="font-size: x-small;">COUNTY</th> <th style="font-size: x-small;">TOTAL SHEETS</th> <th style="font-size: x-small;">SHEET NO.</th> </tr> <tr> <td style="font-size: x-small;">116</td> <td style="font-size: x-small;">(124Z)RS-4,(5-21)123RS-3</td> <td style="font-size: x-small;">RICHLAND</td> <td style="font-size: x-small;">16</td> <td style="font-size: x-small;">2</td> </tr> <tr> <td colspan="5" style="font-size: x-small; text-align: center;">CONTRACT NO. 74962</td> </tr> </table>	F.A.P. RTE.	SECTION	COUNTY	TOTAL SHEETS	SHEET NO.	116	(124Z)RS-4,(5-21)123RS-3	RICHLAND	16	2	CONTRACT NO. 74962				
F.A.P. RTE.	SECTION	COUNTY	TOTAL SHEETS	SHEET NO.																	
116	(124Z)RS-4,(5-21)123RS-3	RICHLAND	16	2																	
CONTRACT NO. 74962																					

80% FED  
20% STATE  
URBAN

80% FED  
20% STATE  
URBAN

SUMMARY OF QUANTITIES			TOTAL QUANTITIES	CONSTRUCTION TYPE CODE		
CODE NO	ITEM	UNIT		0005		
20800150	TRENCH BACKFILL	CU YD	20	20		
40600290	BITUMINOUS MATERIALS (TACK COAT)	POUND	9500	9500		
40600370	LONGITUDINAL JOINT SEALANT	FOOT	6454	6454		
40600990	TEMPORARY RAMP	SO YD	91	91		
40603219	POLYMERIZED HOT-MIX ASPHALT BINDER COURSE, IL-9.5FG, N90	TON	1380	1380		
40604164	POLYMERIZED HOT-MIX ASPHALT SURFACE COURSE, IL-9.5, MIX "D", N90	TON	1576	1576		
40800050	INCIDENTAL HOT-MIX ASPHALT SURFACING	TON	15	15		
42000060	WELDED WIRE REINFORCEMENT	SO YD	396	396		
42000540	PORTLAND CEMENT CONCRETE PAVEMENT 12"	SO YD	370	370		
42300400	PORTLAND CEMENT CONCRETE DRIVEWAY PAVEMENT, 8 INCH	SO YD	26	26		
44000100	PAVEMENT REMOVAL	SO YD	370	370		
44000164	HOT-MIX ASPHALT SURFACE REMOVAL, 3 3/4"	SO YD	14074	14074		
44000200	DRIVEWAY PAVEMENT REMOVAL	SO YD	26	26		

SUMMARY OF QUANTITIES			TOTAL QUANTITIES	CONSTRUCTION TYPE CODE		
CODE NO	ITEM	UNIT		0005		
44000500	COMBINATION CURB AND GUTTER REMOVAL	FOOT	40	40		
44201789	CLASS D PATCHES, TYPE II, 12 INCH	SO YD	98	98		
44201794	CLASS D PATCHES, TYPE III, 12 INCH	SO YD	35	35		
50105220	PIPE CULVERT REMOVAL	FOOT	150	150		
54213663	PRECAST REINFORCED CONCRETE FLARED END SECTIONS 18"	EACH	1	1		
550A0090	STORM SEWERS, CLASS A, TYPE 1 18"	FOOT	150	150		
60260500	INLETS TO BE ADJUSTED WITH NEW TYPE 3 FRAME AND GRATE	EACH	4	4		
60605000	COMBINATION CONCRETE CURB AND GUTTER, TYPE B-6.24	FOOT	40	40		
66700205	PERMANENT SURVEY MARKERS, TYPE I	EACH	2	2		
* 66900200	NON-SPECIAL WASTE DISPOSAL	CU YD	265	265		
* 66900530	SOIL DISPOSAL ANALYSIS	EACH	3	3		
* 66901001	REGULATED SUBSTANCES PRE-CONSTRUCTION PLAN	L SUM	1	1		
* 66901003	REGULATED SUBSTANCES FINAL CONSTRUCTION REPORT	L SUM	1	1		

\* SPECIALTY ITEM

MODEL: Default  
 FILE NAME: p:\ultra-cw-bead\p\com\p\INDOT\Documents\DOT Office\Director\_2\Projects\74962\CADD\Drawings\CAD\Sheets\74962-SP-S00.dgn

USER NAME = stefnemk	DESIGNED -	REVISED -
	DRAWN -	REVISED -
PLOT SCALE = 100,0000' / in.	CHECKED -	REVISED -
PLOT DATE = 1/3/2022	DATE -	REVISED -

STATE OF ILLINOIS  
DEPARTMENT OF TRANSPORTATION

SUMMARY OF QUANTITIES

SCALE: SHEET 1 OF SHEETS STA. TO STA.

F.A.P. RTE.	SECTION	COUNTY	TOTAL SHEETS	SHEET NO.
116	(124Z)RS-4,(5-2)123RS-3	RICHLAND	16	3
CONTRACT NO. 74962			ILLINOIS FED. AID PROJECT	

80% FED  
20% STATE  
URBAN

80% FED  
20% STATE  
URBAN

SUMMARY OF QUANTITIES			TOTAL QUANTITIES	CONSTRUCTION TYPE CODE		
CODE NO	ITEM	UNIT		0005		
* 66901006	REGULATED SUBSTANCES MONITORING	CAL DA	3	3		
67000400	ENGINEER'S FIELD OFFICE, TYPE A	CAL MO	3	3		
67100100	MOBILIZATION	L SUM	1	1		
70102620	TRAFFIC CONTROL AND PROTECTION, STANDARD	L SUM	1	1		
	701501					
70102622	TRAFFIC CONTROL AND PROTECTION, STANDARD	L SUM	1	1		
	701502					
70107025	CHANGEABLE MESSAGE SIGN	CAL DA	28	28		
70300100	SHORT TERM PAVEMENT MARKING	FOOT	2013	2013		
70300150	SHORT TERM PAVEMENT MARKING REMOVAL	SO FT	222	222		
70300211	TEMPORARY PAVEMENT MARKING LETTERS AND	SO FT	434	434		
	SYMBOLS - PAINT					
70300221	TEMPORARY PAVEMENT MARKING - LINE 4"- PAINT	FOOT	8882	8882		
70300261	TEMPORARY PAVEMENT MARKING - LINE 12"- PAINT	FOOT	81	81		
* 78000100	THERMOPLASTIC PAVEMENT MARKING - LETTERS AND	SO FT	434	434		
	SYMBOLS					

SUMMARY OF QUANTITIES			TOTAL QUANTITIES	CONSTRUCTION TYPE CODE		
CODE NO	ITEM	UNIT		0005		
* 78000200	THERMOPLASTIC PAVEMENT MARKING - LINE 4"	FOOT	8882	8882		
* 78000600	THERMOPLASTIC PAVEMENT MARKING - LINE 12"	FOOT	81	81		
* 78011000	GROOVING FOR RECESSED PAVEMENT MARKING, LETTERS AND SYMBOLS	SO FT	434	434		
* 78011025	GROOVING FOR RECESSED PAVEMENT MARKING 5"	FOOT	8882	8882		
* 78011065	GROOVING FOR RECESSED PAVEMENT MARKING 13"	FOOT	81	81		
* 78100100	RAISED REFLECTIVE PAVEMENT MARKER	EACH	169	169		
78300200	RAISED REFLECTIVE PAVEMENT MARKER REMOVAL	EACH	169	169		
X0326440	SURFACE REMOVAL, VARIABLE DEPTH (SPECIAL)	SO YD	172	172		
X4060995	TEMPORARY RAMP, SPECIAL	SO YD	623	623		
X5537800	STORM SEWERS TO BE CLEANED 12"	FOOT	101	101		
X7011800	TRAFFIC CONTROL AND PROTECTION, STANDARD BLR	L SUM	1	1		
	21					
Z0016702	DETOUR SIGNING	L SUM	1	1		
Z0048665	RAILROAD PROTECTIVE LIABILITY INSURANCE	L SUM	1	1		

\* SPECIALTY ITEM

MODEL: Default  
 FILE NAME: p:\project-new\benefit\com\p\INDOT\Documents\DOT Office\Director\_T\Project\74962\CADD\Drawings\Drawings\74962-SP-500.dgn

USER NAME = stefenmk	DESIGNED -	REVISED -
	DRAWN -	REVISED -
PLOT SCALE = 100,0000' / in.	CHECKED -	REVISED -
PLOT DATE = 1/3/2022	DATE -	REVISED -

STATE OF ILLINOIS  
DEPARTMENT OF TRANSPORTATION

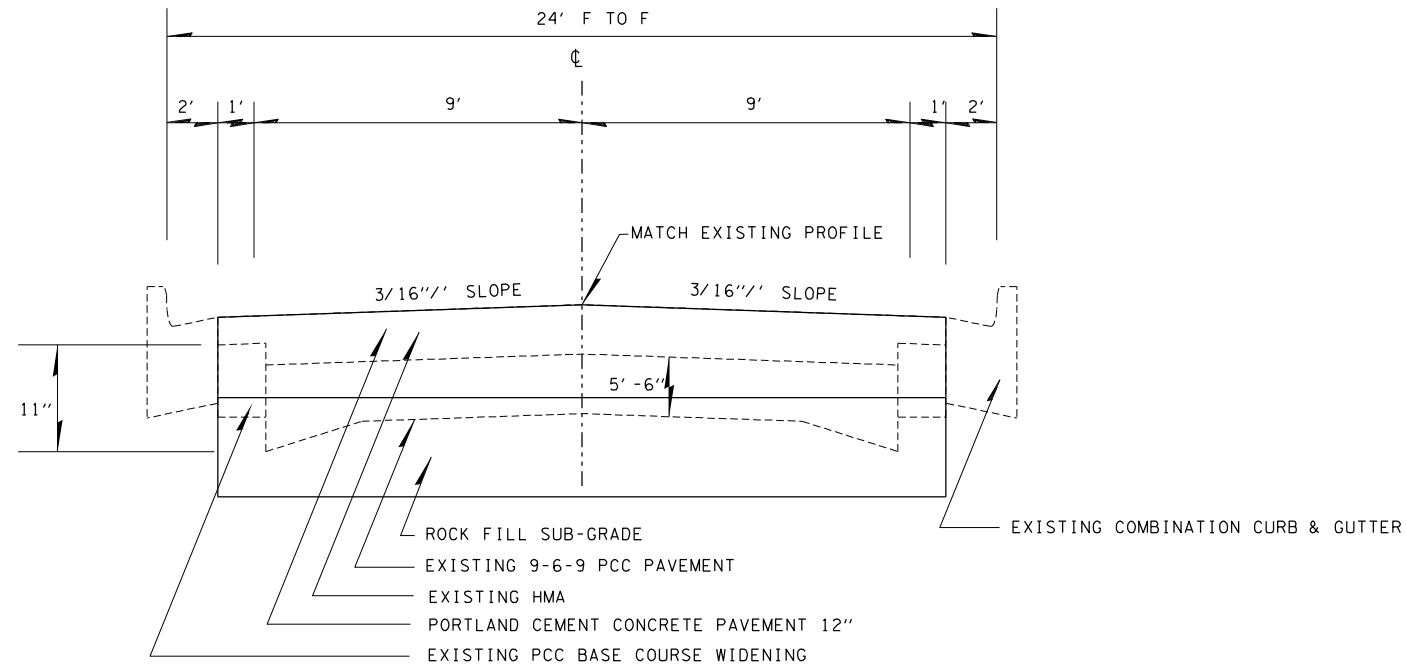
SUMMARY OF QUANTITIES

SCALE: SHEET 2 OF SHEETS STA. TO STA.

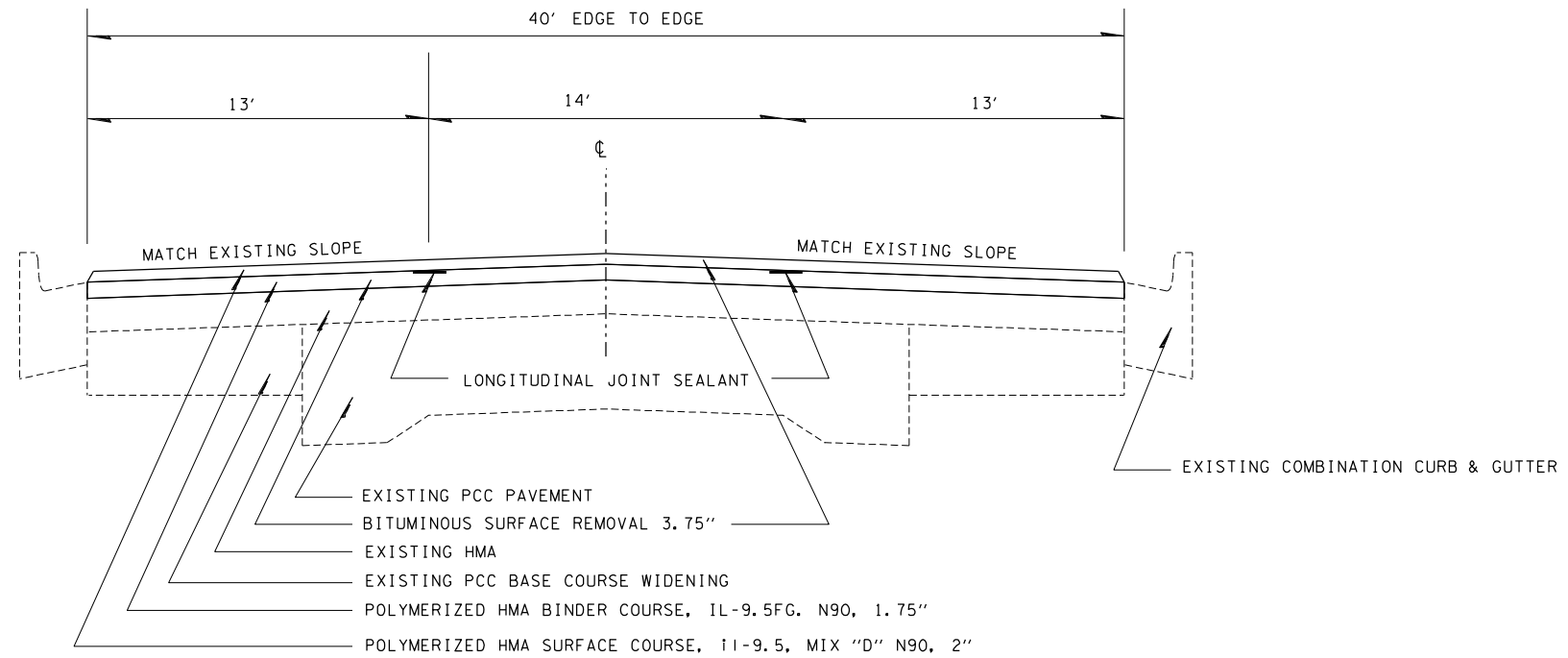
F.A.P. RTE.	SECTION	COUNTY	TOTAL SHEETS	SHEET NO.
116	(124Z)RS-4,(5-2)123RS-3	RICHLAND	16	4
CONTRACT NO. 74962			ILLINOIS FED. AID PROJECT	







PROPOSED TYPICAL SECTION  
 STATION 21+17 TO STATION 22+05 (WIDTH 20')  
 STATION 22+05 TO STATION 22+73 (WIDTH TRANSITIONS FROM 20' - 25')



PROPOSED TYPICAL SECTION  
 STATION 22+73 TO STATION 25+17 (WIDTH TRANSITIONS FROM 25' - 40')  
 STATION 25+17 TO STATIO 55+00 (WIDTH 40')

MODEL: Default  
 FILE: Mainfile.pxd  
 SUBJECT: new bench by.com  
 PLOT DATE: 1/3/2022

USER NAME = steffenmk	DESIGNED -	REVISED -
	DRAWN -	REVISED -
PLOT SCALE = 40,0000 * / in.	CHECKED -	REVISED -
PLOT DATE = 1/3/2022	DATE -	REVISED -

STATE OF ILLINOIS  
 DEPARTMENT OF TRANSPORTATION

TYPICAL SECTION

SCALE: SHEET OF SHEETS STA. TO STA.

F.A.P. RTE.	SECTION	COUNTY	TOTAL SHEETS	SHEET NO.
116	(1242)RS-4.(5-21)123 RS-3	RICHLAND	16	6
CONTRACT NO. 74962				
ILLINOIS FED. AID PROJECT				

CLASS D PATCHING							
PATCH	LANE	STATION	LENGTH	WIDTH	DEPTH	TYPE II	TYPE III
1	NB	0+52	10.0	13.0	12.0	14.4	
2	NB	1+30	9.0	13.0	12.0	13.0	
3	NB	2+05	7.0	13.0	12.0	10.1	
4	NB	2+55	5.0	13.0	12.0	7.2	
5	CL	0+52	6.0	14.0	12.0	9.3	
6	CL	1+30	5.0	14.0	12.0	7.8	
7	CL	2+05	5.0	14.0	12.0	7.8	
8	CL	2+55	4.0	14.0	12.0	6.2	
9	SB	0+52	8.0	13.0	12.0	11.6	
10	SB	1+30	13.0	13.0	12.0		18.8
11	SB	2+05	11.0	13.0	12.0		15.9
12	SB	2+55	7.0	13.0	12.0	10.1	
TOTAL						97.6	34.7

PAVEMENT SCHEDULE								
STATION	TO	STATION	LENGTH	WIDTH	SQ YD	CU YD	SQ YD	SQ YD
21+17	TO	22+05	88	20	196	132	196	196
22+05	TO	22+73	68	23	174	113	174	174
PROJECT TOTAL					370	245	370	370

\* SEE SHEET 11 FOR ADDITIONAL QUANTITY

SURVEY MARKERS				
POINT	STATION	OFFSET	EACH	EACH
101	31+00-POT	0	1	1
100	47+77.41-PC	0	1	1
TOTAL			2	2

PAVEMENT MARKING SCHEDULE																
STATION	TO	STATION	LENGTH	FOOT	SQ FT	EACH	EACH	FOOT	FOOT	FOOT	FOOT	FOOT	SQ FT	SQ FT	SQ FT	SQ FT
21+17	TO	22+05	88	27	3	2	2	176	176	176	0	0	0	0	0	0
22+05	TO	22+73	68	42	5	4	4	272	272	272	0	0	0	0	0	0
22+73	TO	25+17	244	150	17	13	13	976	976	976	81	81	81	62	62	62
25+17	TO	55+00	2983	1794	197	150	150	7458	7458	7458	0	0	0	372	372	372
				2013	222	169	169	8882	8882	8882	81	81	81	434	434	434

RESURFACING SCHEDULE									
STATION	TO	STATION	LENGTH	WIDTH	SQ YD	POUND	TON	TON	FEET
22+73	TO	25+17	244	33	816	551	80	91	488
25+17	TO	55+00	2983	40	13258	8949	1300	1485	5966
PROJECT TOTAL					14074	9500	1380	1576	6454

MODEL: Default  
 FILE: \\MAILSrv\pub\ldict-pw-bead\paw.com\PIV\DOT\Documents\DOT\_Offices\Dir\dr\_7\Project\74962\CADD\Drawings\CAD\Sheet\074962-PT-Sched.dgn

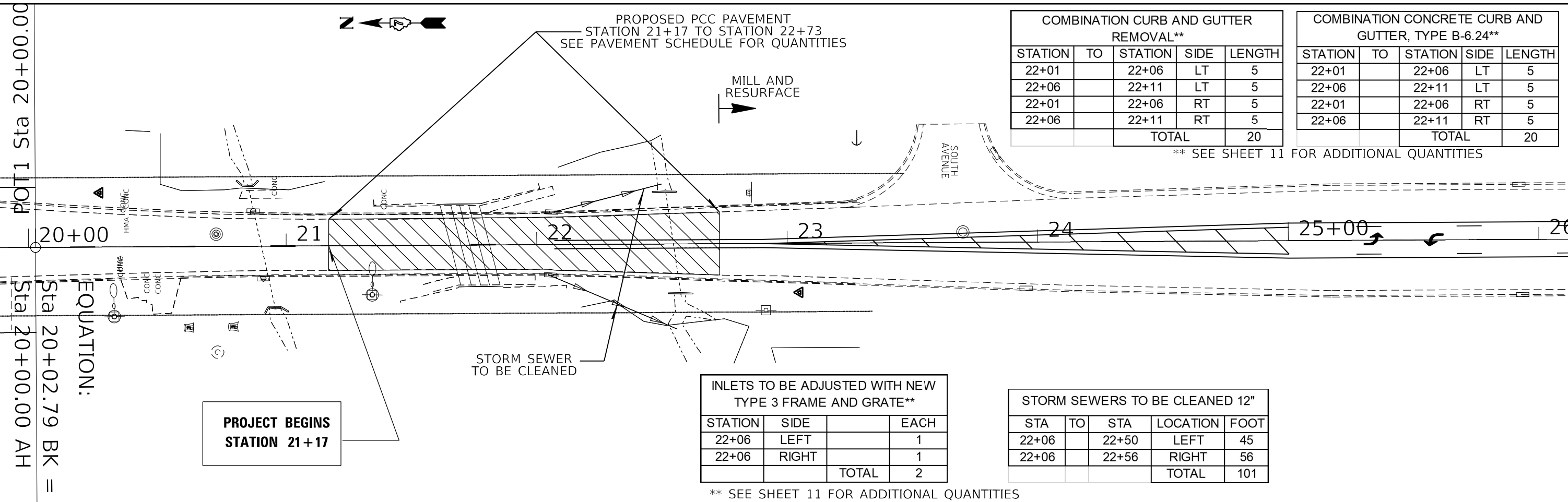
USER NAME = stefenmk	DESIGNED -	REVISED -
	DRAWN -	REVISED -
PLOT SCALE = 100,0000' / in.	CHECKED -	REVISED -
PLOT DATE = 1/3/2022	DATE -	REVISED -

**STATE OF ILLINOIS  
DEPARTMENT OF TRANSPORTATION**

**SCHEDULE OF QUANTITIES**

SCALE: SHEET OF SHEETS STA. TO STA.

F.A.P. RTE.	SECTION	COUNTY	TOTAL SHEETS	SHEET NO.
116	(124Z)RS-4.(5-21)123 RS-3	RICHLAND	16	7
CONTRACT NO. 74962				
ILLINOIS		FED. AID PROJECT		



COMBINATION CURB AND GUTTER REMOVAL**				
STATION	TO	STATION	SIDE	LENGTH
22+01		22+06	LT	5
22+06		22+11	LT	5
22+01		22+06	RT	5
22+06		22+11	RT	5
TOTAL				20

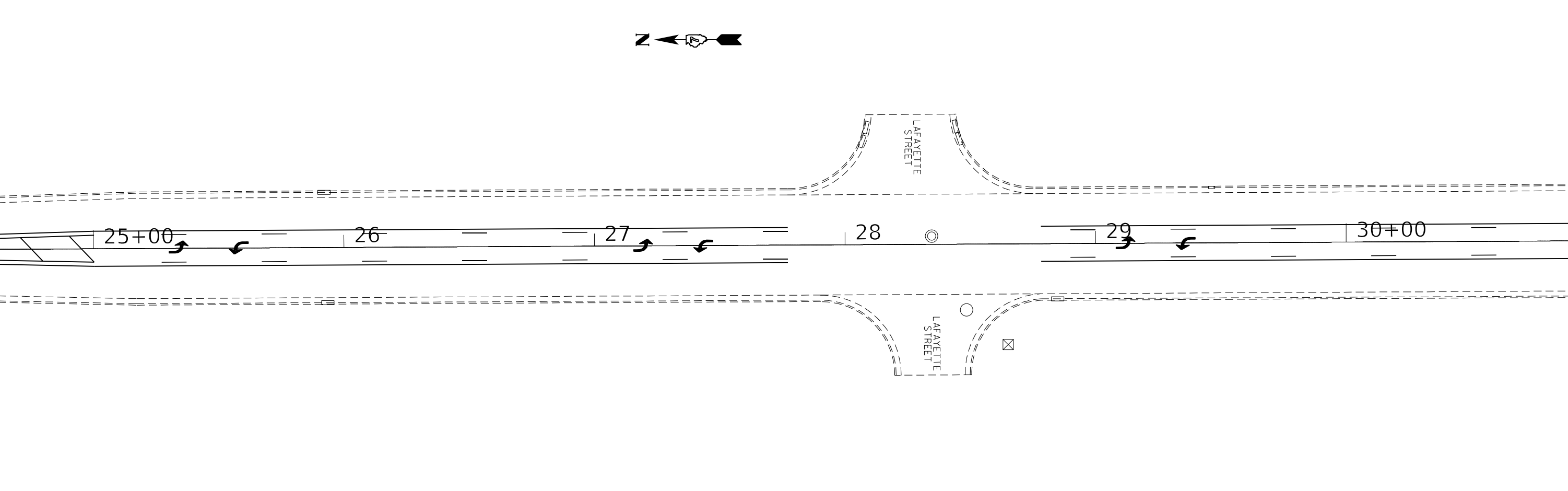
COMBINATION CONCRETE CURB AND GUTTER, TYPE B-6.24**				
STATION	TO	STATION	SIDE	LENGTH
22+01		22+06	LT	5
22+06		22+11	LT	5
22+01		22+06	RT	5
22+06		22+11	RT	5
TOTAL				20

\*\* SEE SHEET 11 FOR ADDITIONAL QUANTITIES

INLETS TO BE ADJUSTED WITH NEW TYPE 3 FRAME AND GRATE**			
STATION	SIDE		EACH
22+06	LEFT		1
22+06	RIGHT		1
TOTAL			2

STORM SEWERS TO BE CLEANED 12"				
STA	TO	STA	LOCATION	FOOT
22+06		22+50	LEFT	45
22+06		22+56	RIGHT	56
TOTAL				101

\*\* SEE SHEET 11 FOR ADDITIONAL QUANTITIES



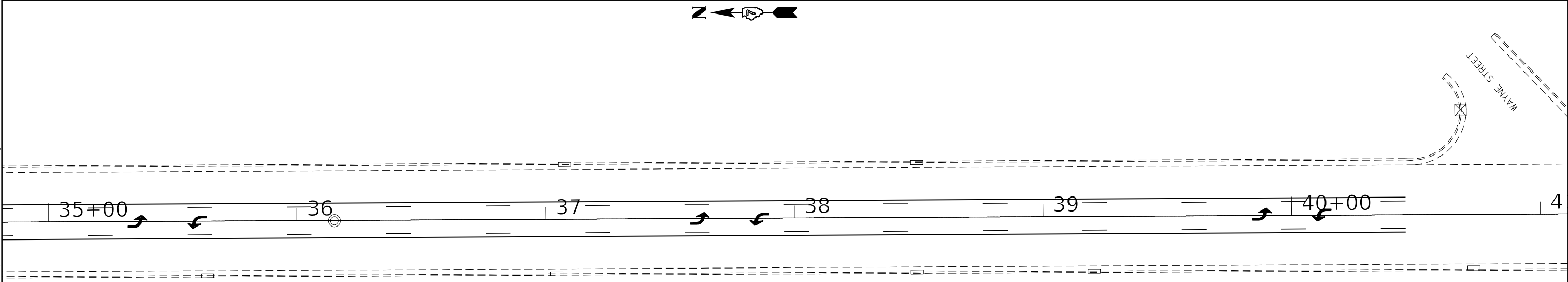
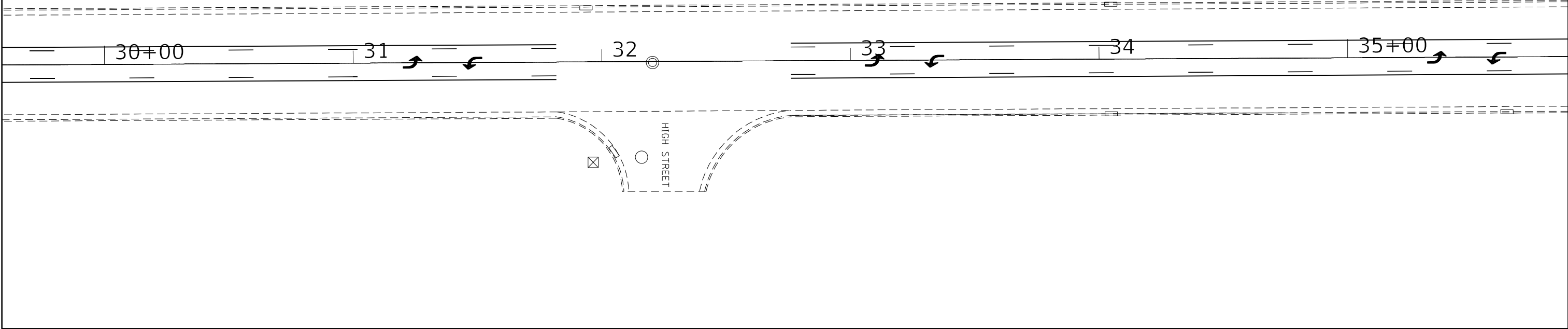
MODEL: Default  
 FILE NAME: p:\ultra-cw-bead\p\com\p\INDOT\Documents\INDOT Office\Director\_7\Project\74962\CADD\data\CADD\sheet\0774962-sh.dwg  
 PLOT DATE = 1/3/2022

USER NAME = stefnkmk	DESIGNED -	REVISED -
	DRAWN -	REVISED -
PLOT SCALE = 40,0000 * / in.	CHECKED -	REVISED -
PLOT DATE = 1/3/2022	DATE -	REVISED -

**STATE OF ILLINOIS  
DEPARTMENT OF TRANSPORTATION**

PLAN SHEET			
STATION 20+00 TO STATION 30+00			
SCALE:	SHEET	OF SHEETS	STA. TO STA.

F.A.P. RTE.	SECTION	COUNTY	TOTAL SHEETS	SHEET NO.
116	(1242)RS-4.(5-21)123 RS-3	RICHLAND	16	8
CONTRACT NO. 74962				
ILLINOIS FED. AID PROJECT				



MODEL: Default  
 FILE: \\MAILSrv\pub\subject-aw-beadley.com\PIV\DOT\Documents\DOT\_Offices\Director\_7\Projects\74962\CADD\Drawings\CAD\sheet0774962-pts.dwg

USER NAME = steffenmk	DESIGNED -	REVISED -
DRAWN -	REVISIONS -	
PLOT SCALE = 40,0000 * / in.	CHECKED -	REVISED -
PLOT DATE = 1/3/2022	DATE -	REVISED -

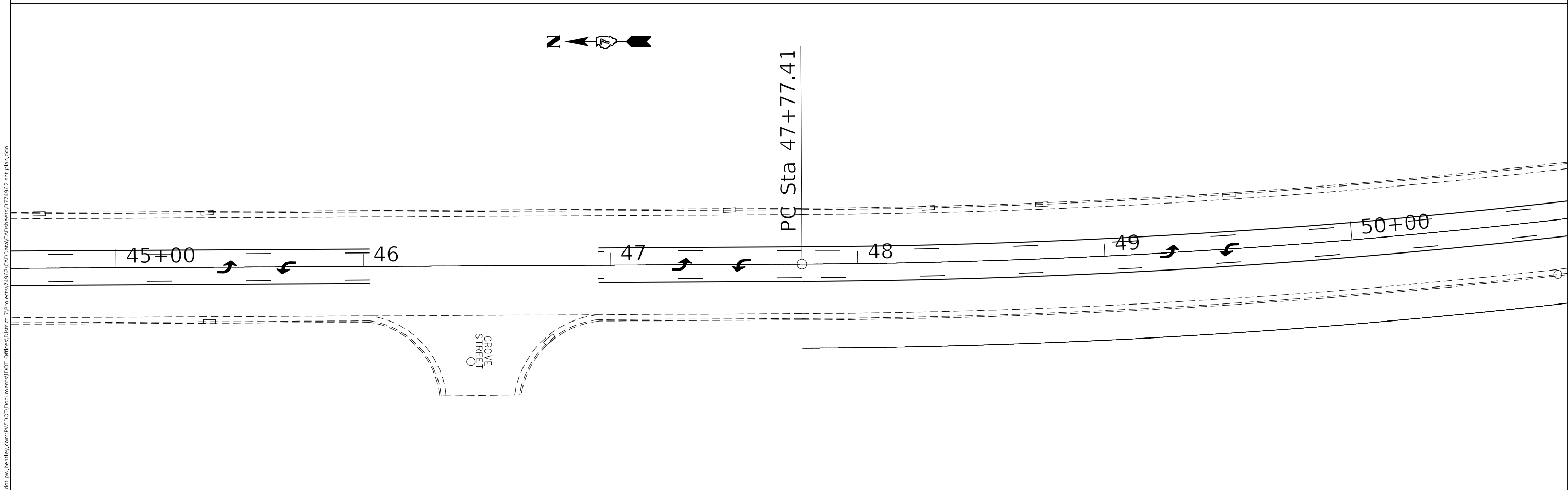
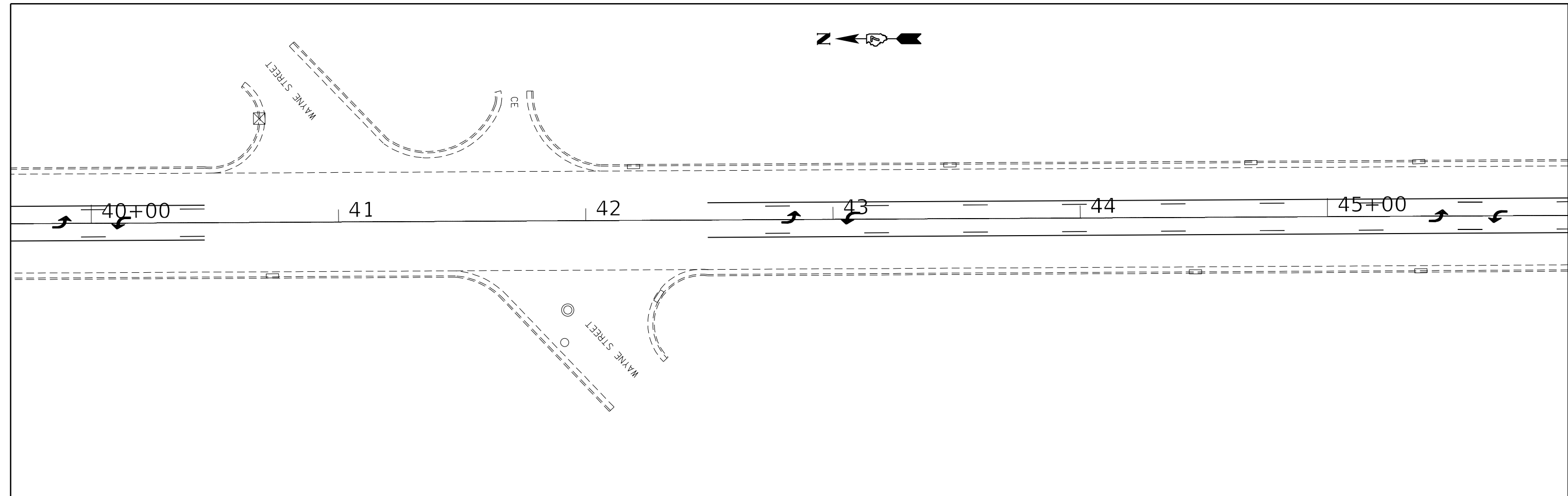
**STATE OF ILLINOIS**  
**DEPARTMENT OF TRANSPORTATION**

**PLAN SHEET**  
**STATION 30+00 TO STATION 40+00**

F.A.P. RTE.	SECTION	COUNTY	TOTAL SHEETS	SHEET NO.
116	(1242)RS-4.(5-21)123 RS-3	RICHLAND	16	9
CONTRACT NO. 74962				
ILLINOIS FED. AID PROJECT				

SCALE: SHEET OF SHEETS STA. TO STA.

MODEL: Default  
 FILE NAME: p:\ultra-cw-bead\paw.com\PIV\DOT\Documents\DOT Office\Director\_7\Project\74962\CADD\Drawings\74962-sh-dt-a.dwg

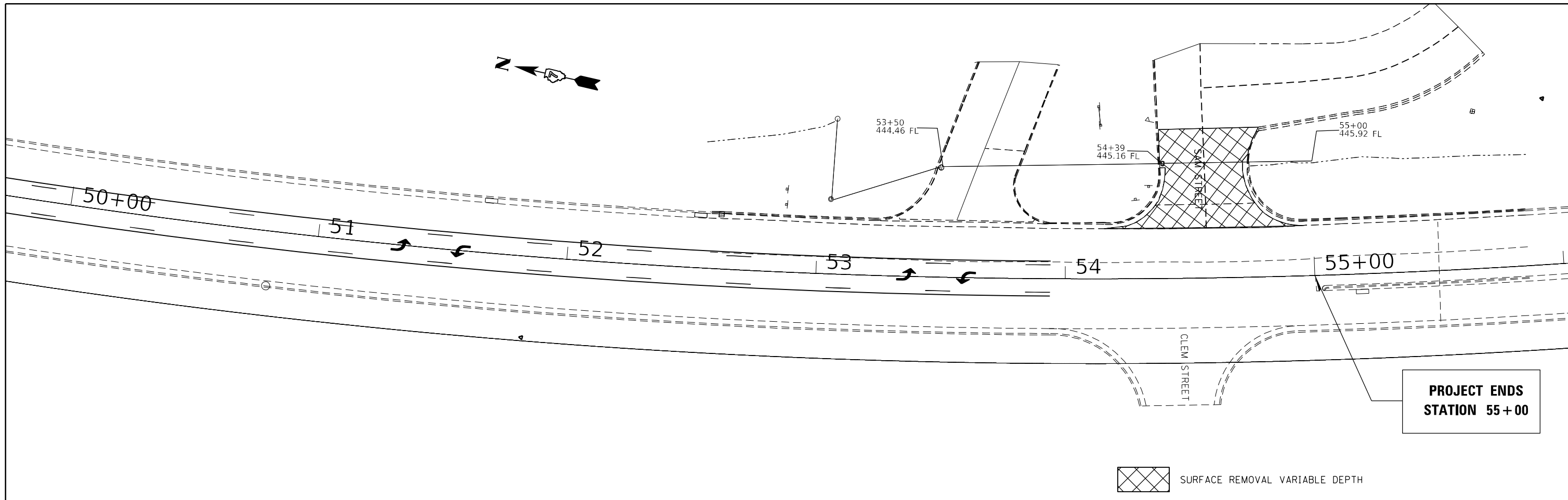


USER NAME = stefenmk	DESIGNED -	REVISED -
	DRAWN -	REVISED -
PLOT SCALE = 40,0000 * / in.	CHECKED -	REVISED -
PLOT DATE = 1/3/2022	DATE -	REVISED -

**STATE OF ILLINOIS**  
**DEPARTMENT OF TRANSPORTATION**

<b>PLAN SHEET</b> <b>STATION 40+00 TO STATION 50+00</b>			
SCALE:	SHEET	OF	SHEETS
	STA.	TO	STA.

F.A.P. RTE.	SECTION	COUNTY	TOTAL SHEETS	SHEET NO.
116	(1242)RS-4.(5-21)123 RS-3	RICHLAND	16	10
CONTRACT NO. 74962				
ILLINOIS FED. AID PROJECT				



 SURFACE REMOVAL VARIABLE DEPTH

QUANTITY SCHEDULE

STATION	TO	STATION	PIPE CULVERT REMOVAL FOOT	STORM SEWERS, CLASS A, TYPE 1 18" FOOT	TRENCH BACKFILL CU YD	PRFCAST RFINORCFD CONCRETE FLARED END SECTIONS 18" EACH	INLET TO BE ADJUSTEDS WITH NEW FRAME AND GRATE** EACH	COMBINATION CURB AND GUTTER REMOVAL** FOOT	COMBINATION CONCRETE CURB AND GUTTER, TYPE B- 6.24** FOOT	DRIVEWAY PAVEMENT REMOVAL SQ YD	PORTLAND CEMENT CONCRETE DRIVEWAY PAVEMENT, 8 INCH SQ YD	WELDED WIRE REINFORCEMENT * SQ YD	SURFACE REMOVAL, VARIABLE DEPTH (SPECIAL) SQ YD	INCIDENTAL HOT-MIX ASPHALT SURFACING TON					
53+50							1	10	10										
54+39							1	10	10										
55+00						1													
53+45		53+81								13	13	13							
54+38		54+74								13	13	13	172	15					
53+50		55+00	150	150	20														
TOTAL			150	150	20	1	2	20	20	26	26	26	172	15					
										*SEE SHEET 7 FOR ADDITIONAL QUANTITY					**SEE SHEET 8 FOR ADDITIONAL QUANTITY				

MODEL: Default  
 FILE NAME: p:\project-aw-beadby.com\PIV\DOT\Documents\DOT Office\Director\_7\Project\74962\CADD\Drawings\CAD\Sheets\DOT\74962-pts.dwg  
 PROJECT: 74962

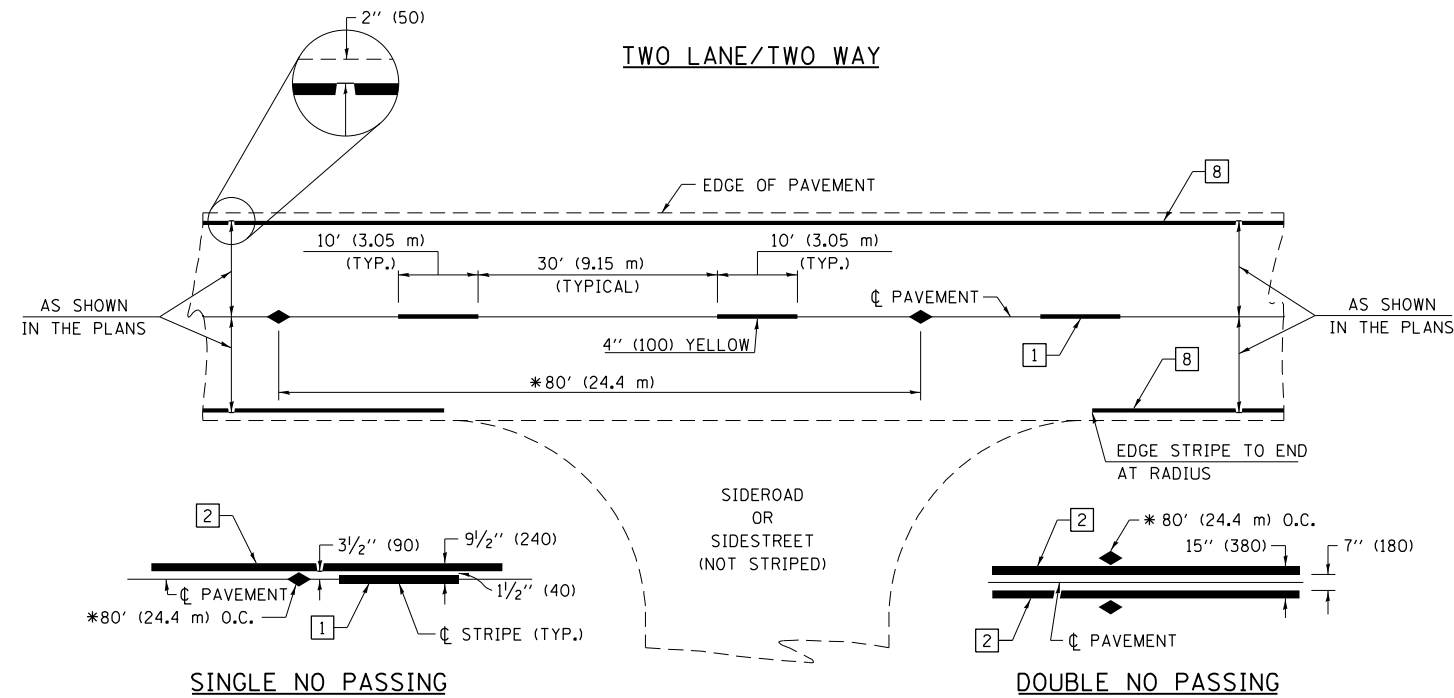
USER NAME = steffenmk	DESIGNED -	REVISED -
	DRAWN -	REVISED -
PLOT SCALE = 40,0000 * / in.	CHECKED -	REVISED -
PLOT DATE = 1/3/2022	DATE -	REVISED -

STATE OF ILLINOIS  
DEPARTMENT OF TRANSPORTATION

PLAN SHEET  
STATION 50+00 TO STATION 55+00

SCALE: SHEET OF SHEETS STA. TO STA.

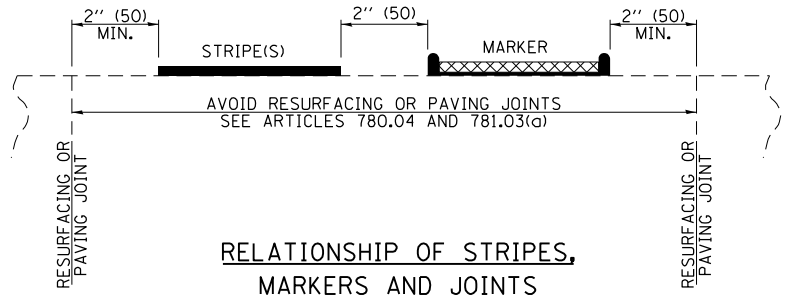
F.A.P. RTE.	SECTION	COUNTY	TOTAL SHEETS	SHEET NO.
116	(1242)RS-4.(5-21)123 RS-3	RICHLAND	16	11
CONTRACT NO. 74962				
ILLINOIS FED. AID PROJECT				



\* REDUCE TO 40' (12.2 m) O.C. ON CURVES WITH POSTED OR ADVISORY SPEEDS OF 45 mph (70 km/h) OR LESS.

PAVEMENT MARKING LEGEND

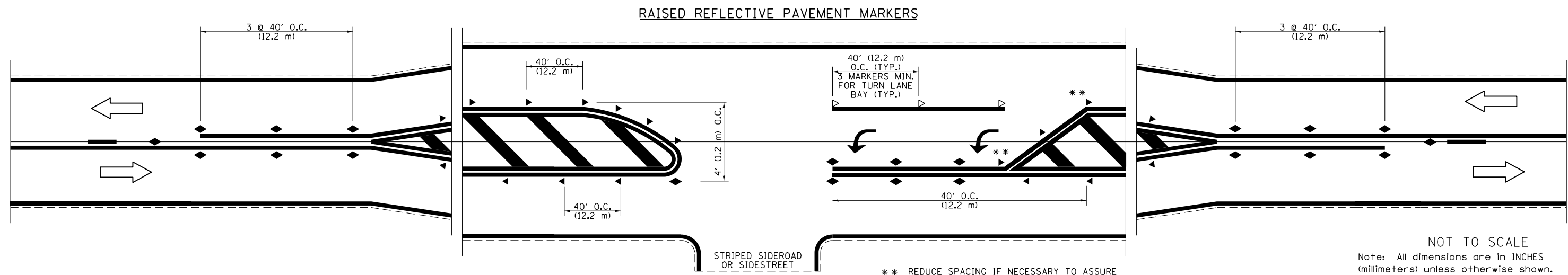
- 1 4" (100) SKIP-DASH (YELLOW)
- 2 4" (100) SOLID (YELLOW)
- 3 12" (300) DIAGONAL (YELLOW)
- 4 4" (100) DOUBLE YELLOW (NARROW)
- 5 12" (300) SOLID WHITE
- 6 RESERVED
- 7 6" (150) SKIP-DASH (WHITE)
- 8 4" (100) SOLID (WHITE)
- 9 12" (300) DIAGONAL (WHITE)
- 10 6" (150) SOLID (WHITE)
- 11 24" (600) STOP BAR (WHITE)
- 12 8" (200) SOLID (WHITE)
- 13 4" (100) PARKING WHITE



RELATIONSHIP OF STRIPES, MARKERS AND JOINTS

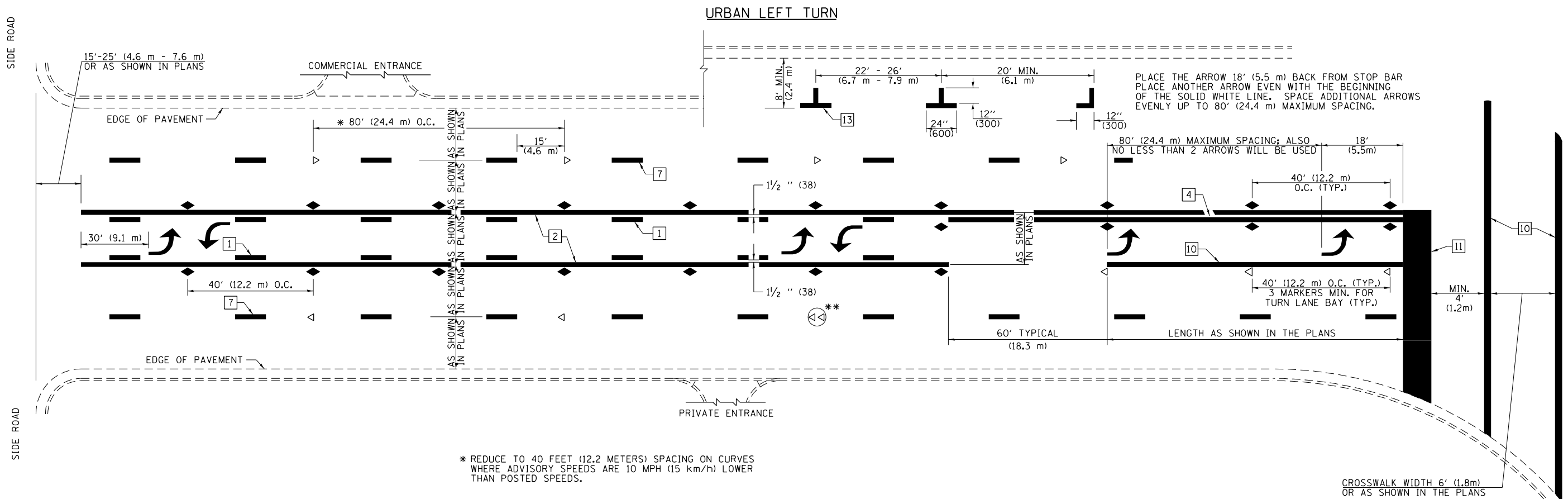
TYPICAL PAVEMENT MARKERS LEGEND

- ◆ TWO-WAY AMBER MARKER
- ▶ ONE-WAY AMBER MARKER
- ▷ ONE-WAY CRYSTAL MARKER



NOT TO SCALE  
Note: All dimensions are in INCHES (millimeters) unless otherwise shown.





PLACE THE ARROW 18' (5.5 m) BACK FROM STOP BAR  
 PLACE ANOTHER ARROW EVEN WITH THE BEGINNING  
 OF THE SOLID WHITE LINE. SPACE ADDITIONAL ARROWS  
 EVENLY UP TO 80' (24.4 m) MAXIMUM SPACING.

\* REDUCE TO 40 FEET (12.2 METERS) SPACING ON CURVES  
 WHERE ADVISORY SPEEDS ARE 10 MPH (15 km/h) LOWER  
 THAN POSTED SPEEDS.

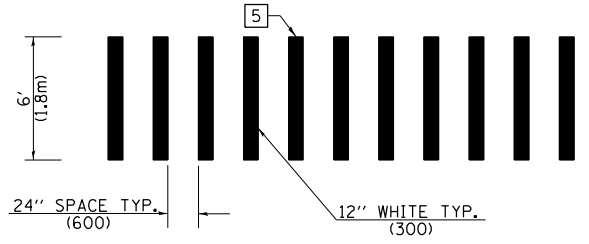
\*\* DOUBLE LANE LINE MARKERS SHALL BE SPECIFIED  
 AND SPACED AS SHOWN IN HIGHWAY STANDARD  
 781001 FOR MULTI-LANE DIVIDED AND UNDIVIDED  
 HIGHWAYS.

**PAVEMENT MARKING LEGEND**

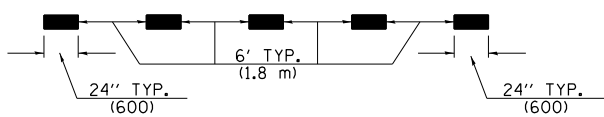
- 1 4" (100) SKIP-DASH (YELLOW)
- 2 4" (100) SOLID (YELLOW)
- 3 12" (300) DIAGONAL (YELLOW)
- 4 4" (100) DOUBLE YELLOW (NARROW)
- 5 12" (300) SOLID WHITE
- 6 RESERVED
- 7 6" (150) SKIP-DASH (WHITE)
- 8 4" (100) SOLID (WHITE)
- 9 12" (300) DIAGONAL (WHITE)
- 10 6" (150) SOLID (WHITE)
- 11 24" (600) STOP BAR (WHITE)
- 12 8" (200) SOLID (WHITE)
- 13 4" (100) PARKING WHITE

**GENERAL NOTES**

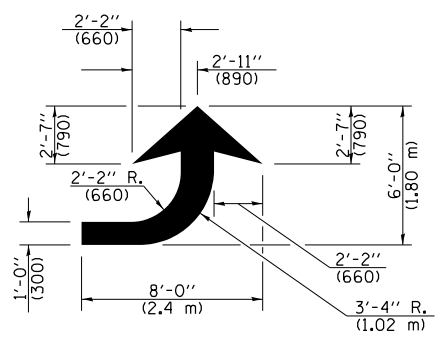
1. TURN ARROW PAIRS SHALL BE PLACED AT 250' (75 m) INTERVALS AND SHALL BE EVENLY SPACED BETWEEN BOTH ENDS OF THE BIDIRECTIONAL LEFT TURN LANE. USE A MINIMUM OF TWO PAIRS PER BLOCK.
2. THE SOLID YELLOW PAVEMENT MARKINGS [2] SHOULD GENERALLY START OR END NEAR THE RADIUS POINT OF EACH STREET RETURN EXCEPT WHERE ONE OR BOTH ENDS WOULD INCLUDE STOP BARS.
3. THE SKIP-DASH PAVEMENT MARKINGS [1] OR [7] SHOULD BE CENTERED BETWEEN BOTH ENDS OF EACH CITY BLOCK AND SHALL BE PLACED SO THEY LINE UP ACROSS FROM EACH OTHER.
4. USE LARGE ARROW SIZE FOR BOTH RURAL AND URBAN LOCATIONS. (SEE LAST PAGE OF SECTION 780x FOR SYMBOLS TABLE)
5. LANE LINE EXTENSIONS SHALL BE THE SAME COLOR AND WIDTH AS THE LANE LINE BEING EXTENDED.
6. ALL WHITE SKIP-DASH LINES SHALL BE 6" IN WIDTH.



**CROSSWALK DETAIL  
 (DECATUR CITY LIMITS ONLY)**

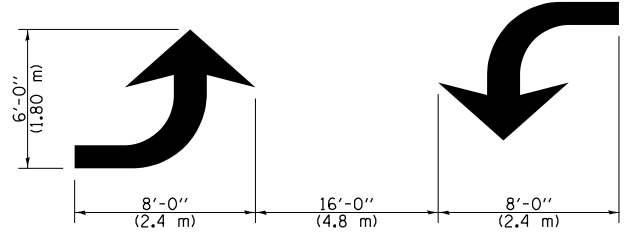


**LANE LINE EXTENSIONS**



**LEFT ARROW**

REVERSE FOR RIGHT ARROW  
 AREA = 15.6 SQ. FT. (1.47 m<sup>2</sup>)  
 (WHITE)



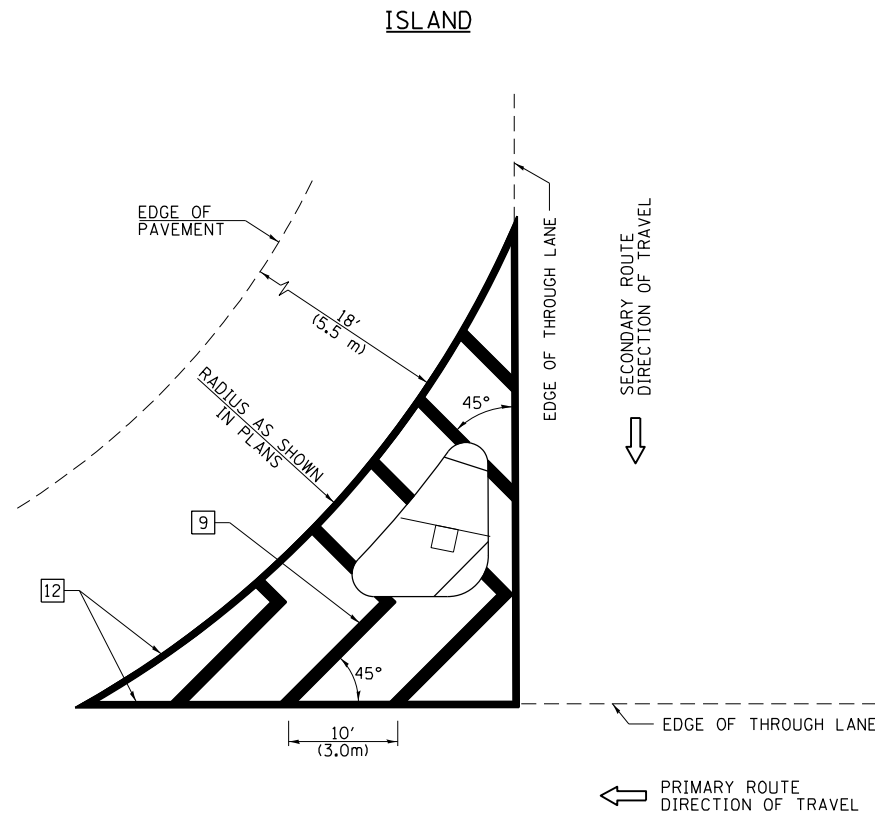
**TYPICAL DOUBLE  
 TURN ARROWS (WHITE)**

NOT TO SCALE

Note: All dimensions are in INCHES  
 (millimeters) unless otherwise shown.

**DISTRICT 7 DETAIL NO. 78000001**

FILE NAME =	USER NAME = steffenk	DESIGNED -	REVISED -	<b>STATE OF ILLINOIS DEPARTMENT OF TRANSPORTATION</b>	<b>PAVEMENT MARKING AND RAISED REFLECTIVE PAVEMENT MARKERS (RURAL &amp; URBAN APPLICATIONS)</b>	F.A.P. RTE.	SECTION	COUNTY	TOTAL SHEETS	SHEET NO.	
pw:\1dot-pw.bentley.com\PWIDOT\Documents\DOT Offices\District 7\Projects\74962\CADD\Drawings\74962-shd-details.dgn	DRAWN	REVISD -	REVISD -			116	(124Z)RS-4,(5-21)123	R5-3	RICHLAND	16	13
PLOT SCALE = 1/200.0000 "/td> <td>CHECKED -</td> <td>REVISD -</td> <td>REVISD -</td> <td colspan="6" style="text-align: center;">CONTRACT NO. 74962</td>	CHECKED -	REVISD -	REVISD -			CONTRACT NO. 74962					
PLOT DATE = 1/3/2022	DATE -	REVISD -	REVISD -			ILLINOIS FED. AID PROJECT					



**GENERAL NOTES**

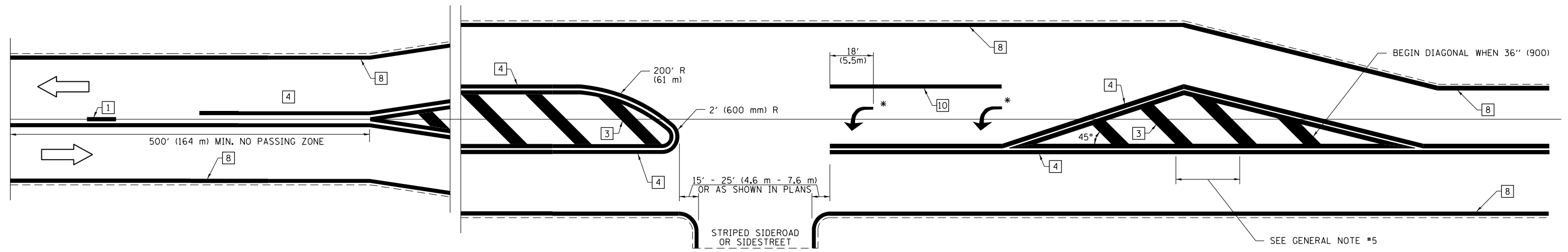
1. RAISED AND CORRUGATED MEDIANS SHALL BE OUTLINED WITH [2] IF PRESENT.
2. SOME OF THE INFORMATION INCLUDED WITH THIS DETAIL MAY NOT BE APPLICABLE TO THIS IMPROVEMENT.
3. PAVEMENT MARKINGS ARE TO BE EXTENDED THROUGH OMISSIONS WHEN APPLICABLE.
4. FINAL PAVEMENT MARKINGS SHALL BE IN PLACE PRIOR TO PLACING ANY RAISED REFLECTIVE PAVEMENT MARKERS.
5. THE FOLLOWING CRITERIA SHALL BE USED FOR SELECTING THE DIAGONAL PAVEMENT MARKING SPACING:

< 30 MPH (< 50 km/h)	15' (4.5 m)
30-45 MPH (50-75 km/h)	20' (6.0 m)
> 45 MPH (> 75 km/h)	30' (9.0 m)

**PAVEMENT MARKING LEGEND**

- [1] 4" (100) SKIP-DASH (YELLOW)
- [2] 4" (100) SOLID (YELLOW)
- [3] 12" (300) DIAGONAL (YELLOW)
- [4] 4" (100) DOUBLE YELLOW (NARROW)
- [5] 12" (300) SOLID WHITE
- [6] RESERVED
- [7] 6" (150) SKIP-DASH (WHITE)
- [8] 4" (100) SOLID (WHITE)
- [9] 12" (300) DIAGONAL (WHITE)
- [10] 6" (150) SOLID (WHITE)
- [11] 24" (600) STOP BAR (WHITE)
- [12] 8" (200) SOLID (WHITE)
- [13] 4" (100) PARKING WHITE

**RURAL LEFT TURN STRIPING**



\* PLACE AN ARROW 18' (5.5 m) BACK FROM STOP BAR. PLACE ANOTHER ARROW EVEN WITH THE BEGINNING OF THE SOLID WHITE LINE. SPACE ADDITIONAL ARROWS EVENLY UP TO 80' (24.4 m) MAXIMUM SPACING. USE MINIMUM OF 2 ARROWS.

NOT TO SCALE  
 Note: All dimensions are in INCHES (millimeters) unless otherwise shown.

**DISTRICT 7 DETAIL NO. 7800001**

FILE NAME =	USER NAME = steffenmk	DESIGNED -	REVISED -
pw:\idot-pw.bentley.com\PWIDOT\Documents\IDOT Offices\District 7\Projects\74962\CADD\Drawings\Drawings\74962-shd-details.dgn		CHECKED -	REVISED -
		DATE -	REVISED -

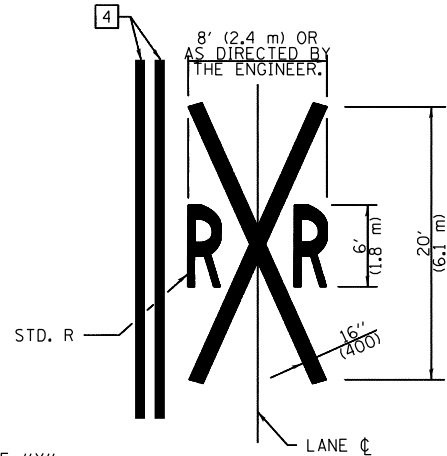
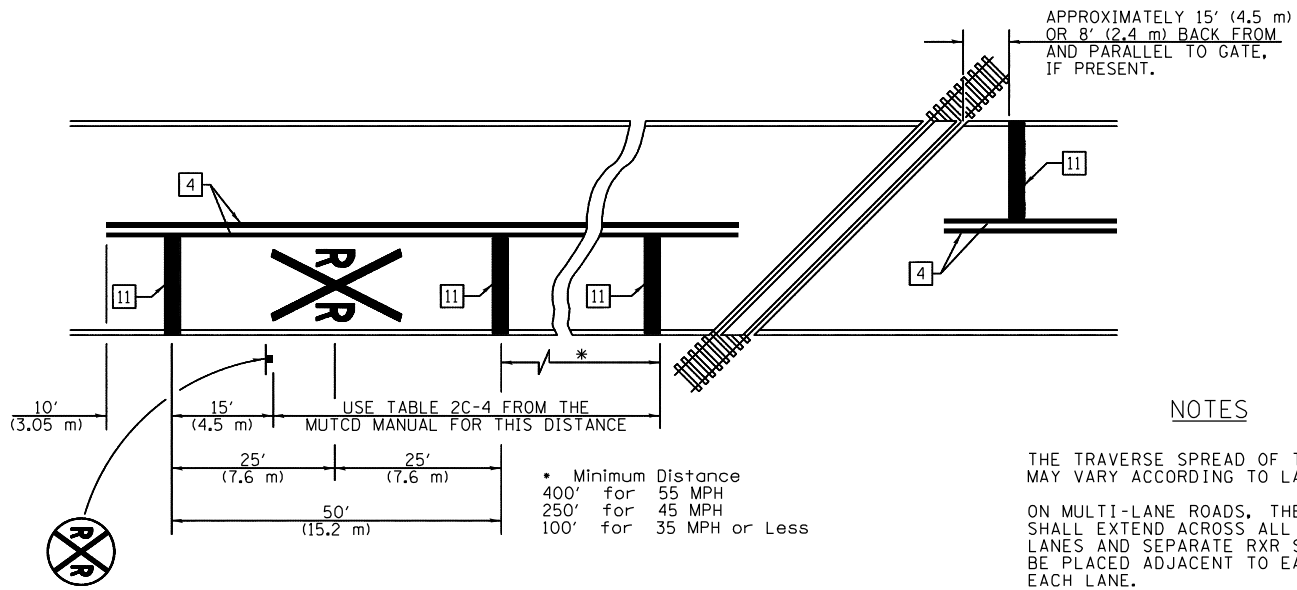
**STATE OF ILLINOIS  
 DEPARTMENT OF TRANSPORTATION**

**PAVEMENT MARKING AND RAISED REFLECTIVE PAVEMENT MARKERS  
 (RURAL & URBAN APPLICATIONS)**

SCALE: SHEET NO. 3 OF 4 SHEETS STA. TO STA.

F.A.P. RTE.	SECTION	COUNTY	TOTAL SHEETS	SHEET NO.
116	(1242)RS-4,(5-21)123 R5-3	RICHLAND	16	14
CONTRACT NO. 74962				
ILLINOIS FED. AID PROJECT				

PAVEMENT MARKINGS AT RAILROAD-HIGHWAY GRADE CROSSING



NOTES

APPROXIMATELY 15' (4.5 m) OR 8' (2.4 m) BACK FROM AND PARALLEL TO GATE, IF PRESENT.

8' (2.4 m) OR AS DIRECTED BY THE ENGINEER.

THE TRAVERSE SPREAD OF THE "X" MAY VARY ACCORDING TO LANE WIDTH.

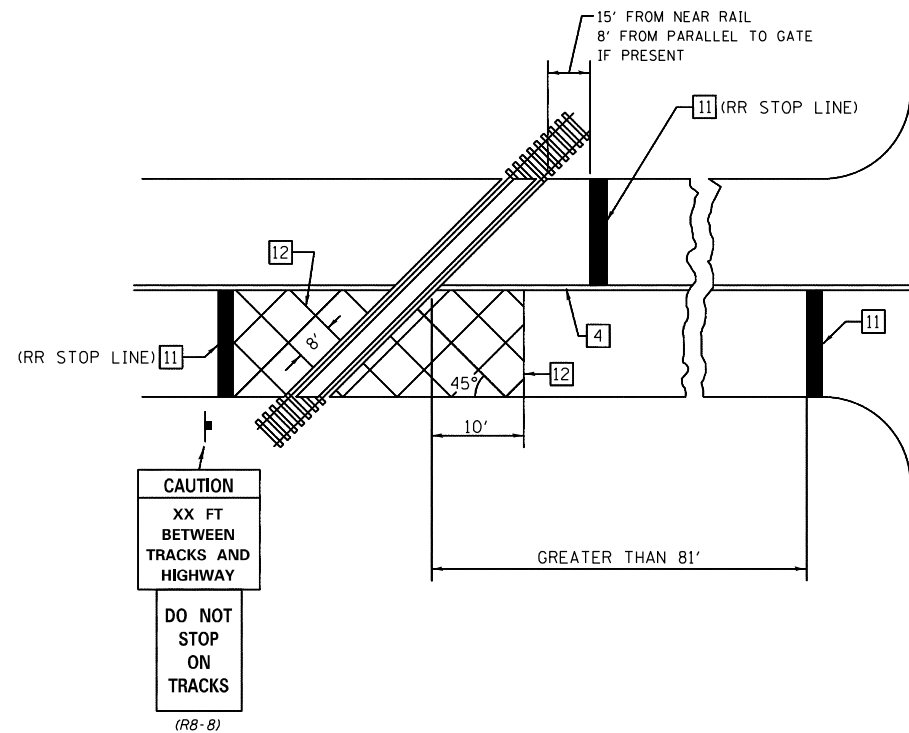
ON MULTI-LANE ROADS, THE STOP LINES SHALL EXTEND ACROSS ALL APPROACH LANES AND SEPARATE RXR SYMBOLS SHALL BE PLACED ADJACENT TO EACH OTHER IN EACH LANE.

WHEN THE PAVEMENT MARKING SYMBOL IS USED, A PORTION OF THE SYMBOL SHOULD BE LOCATED DIRECTLY ADJACENT TO THE ADVANCE WARNING SIGN (W10-1) AS PLACED BY TABLE II-1, CONDITION B OF THE MUTCD.

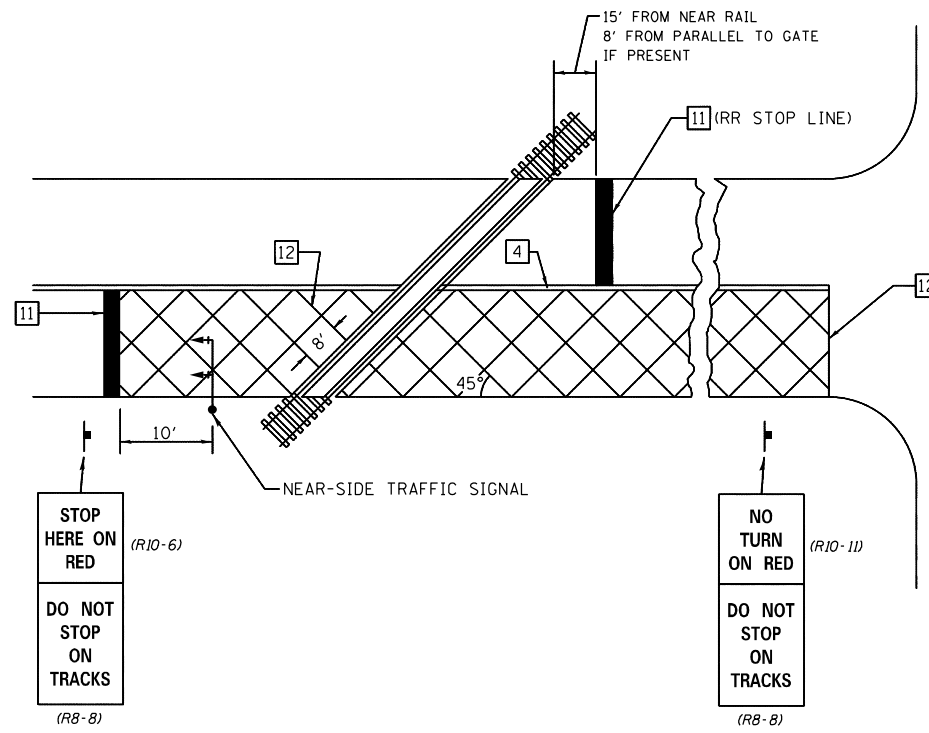
PAVEMENT MARKING LEGEND

- 1 4" (100) SKIP-DASH (YELLOW)
  - 2 4" (100) SOLID (YELLOW)
  - 3 12" (300) DIAGONAL (YELLOW)
  - 4 4" (100) DOUBLE YELLOW (NARROW)
  - 5 12" (300) SOLID WHITE
  - 6 RESERVED
  - 7 6" (150) SKIP-DASH (WHITE)
  - 8 4" (100) SOLID (WHITE)
  - 9 12" (300) DIAGONAL (WHITE)
  - 10 6" (150) SOLID (WHITE)
  - 11 24" (600) STOP BAR (WHITE)
  - 12 8" (200) SOLID (WHITE)
  - 13 4" (100) PARKING WHITE
- 

RAILROAD CROSSING WITH INTERCONNECT ONLY



RAILROAD CROSSING WITH INTERCONNECT AND PRE-SIGNALS



GENERAL NOTES

- SUPPLEMENTAL PAVEMENT MARKINGS TO BE INSTALLED ONLY ON APPROACHES TO INTERSECTIONS CONTROLLED BY TRAFFIC SIGNALS WHICH ARE INTERCONNECTED WITH THE RAILROAD WARNING SIGNALS.
- EXTEND PAVEMENT MARKINGS TO THE INTERSECTION ONLY WHERE NEAR-SIDE TRAFFIC SIGNALS ARE USED.

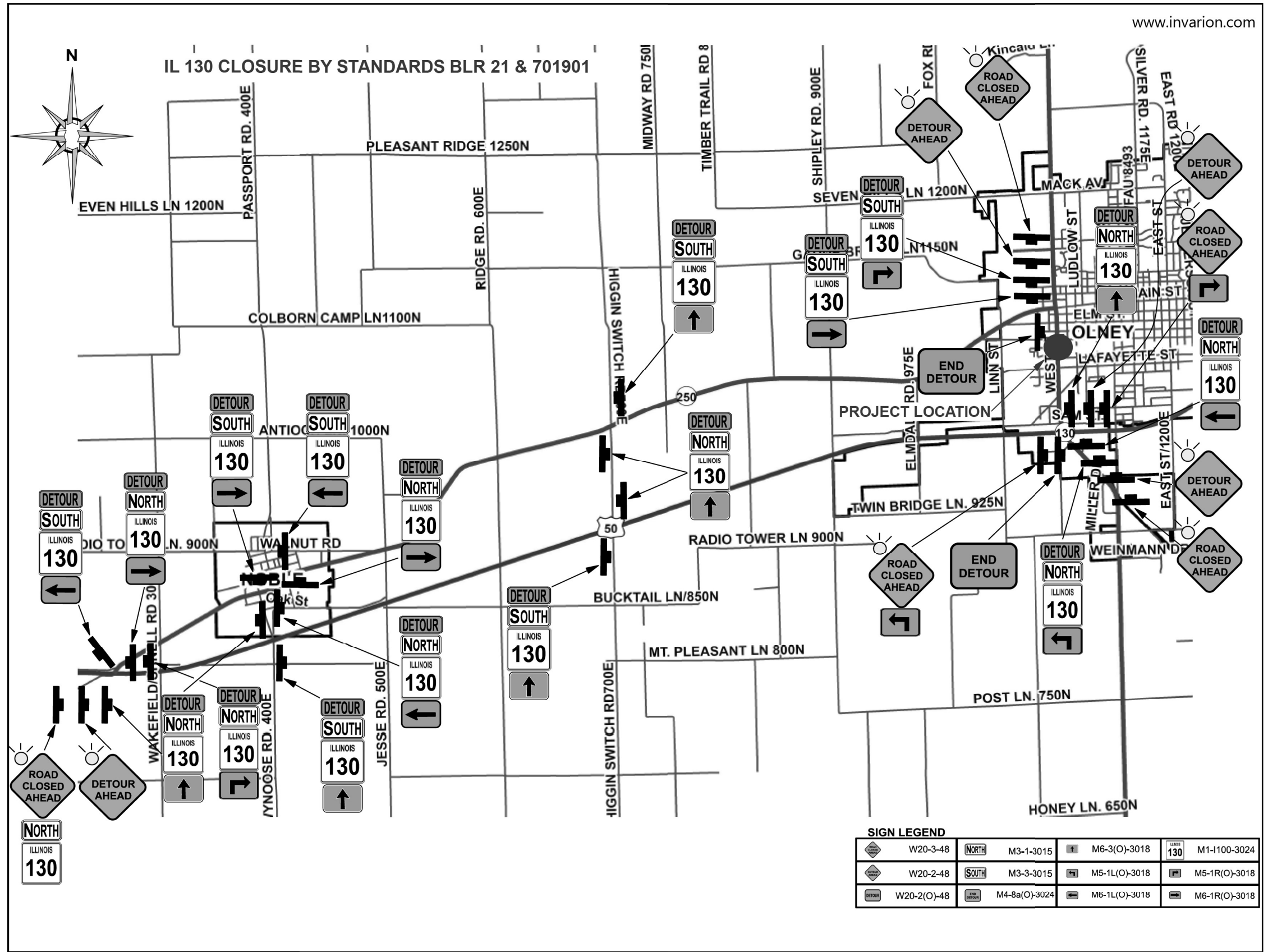
SUPPLEMENTAL PAVEMENT MARKING TREATMENT FOR RAILROAD-HIGHWAY GRADE CROSSING

NOT TO SCALE

Note: All dimensions are in INCHES (millimeters) unless otherwise shown.

DISTRICT 7 DETAIL NO. 7800001

FILE NAME =	USER NAME = steffenk	DESIGNED -	REVISED -	<b>STATE OF ILLINOIS DEPARTMENT OF TRANSPORTATION</b>	<b>PAVEMENT MARKING AND RAISED REFLECTIVE PAVEMENT MARKERS (RURAL &amp; URBAN APPLICATIONS)</b>	F.A.P. RTE.	SECTION	COUNTY	TOTAL SHEETS	SHEET NO.	
pw:\idot-pw\bentley.com\PWIDOT\Documents\IDOT Offices\District 7\Projects\74962\CADD\Drawings\Drawings\74962-sht-details.dgn	PLT SCALE = 1/200.0000 "/td> <td>CHECKED -</td> <td>REVISED -</td> <td>116</td> <td>(124Z)RS-4,(5-21)123</td> <td>R5-3</td> <td>RICHLAND</td> <td>16</td> <td>15</td>	CHECKED -	REVISED -			116	(124Z)RS-4,(5-21)123	R5-3	RICHLAND	16	15
PLT DATE = 1/3/2022	DATE -	REVISED -	SCALE:			SHEET NO. 4 OF 4 SHEETS		STA.	TO STA.		CONTRACT NO. 74962
						ILLINOIS FED. AID PROJECT					



**SIGN LEGEND**

	W20-3-48		M3-1-3015		M6-3(O)-3018		M1-1100-3024
	W20-2-48		M3-3-3015		M5-1L(O)-3018		M5-1R(O)-3018
	W20-2(O)-48		M4-8a(O)-3024		M6-1L(O)-3018		M6-1R(O)-3018

MODEL: Default  
 FILE: \\nafe-pw-bentley.com\PW\DOT\Documents\DOT Office\Dir\detour\Project\74962\CADD\Drawings\CADD\Drawings\74962-11-Detour.dgn  
 PROJECT: 74962

USER NAME = stefenmk	DESIGNED -	REVISED -
DRAWN -	REVISED -	
PLOT SCALE = 80,0000 * / in.	CHECKED -	REVISED -
PLOT DATE = 1/3/2022	DATE -	REVISED -

**STATE OF ILLINOIS  
DEPARTMENT OF TRANSPORTATION**

**DETOUR SIGNING SHEET**

SCALE: SHEET OF SHEETS STA. TO STA.

F.A.P. RTE.	SECTION	COUNTY	TOTAL SHEETS	SHEET NO.
116	(124Z)RS-4.(5-21)123 RS-3	RICHLAND	16	16
CONTRACT NO. 74962				
ILLINOIS FED. AID PROJECT				