

D-94-060-21

**INDEX OF SHEETS**

- 1 COVER SHEET
- 2 ADDITIONAL MAP LOCATIONS
- 3 GENERAL NOTES
- 4-5 SUMMARY OF QUANTITIES
- 6-15 PLAN SHEETS

**STANDARDS**

701001-02	701401-13
701006-05	701406-13
701011-04	701411-09
701101-05	701421-08
701106-02	701428-01
701201-05	701606-10
701206-05	701901-08
701400-11	701602-10

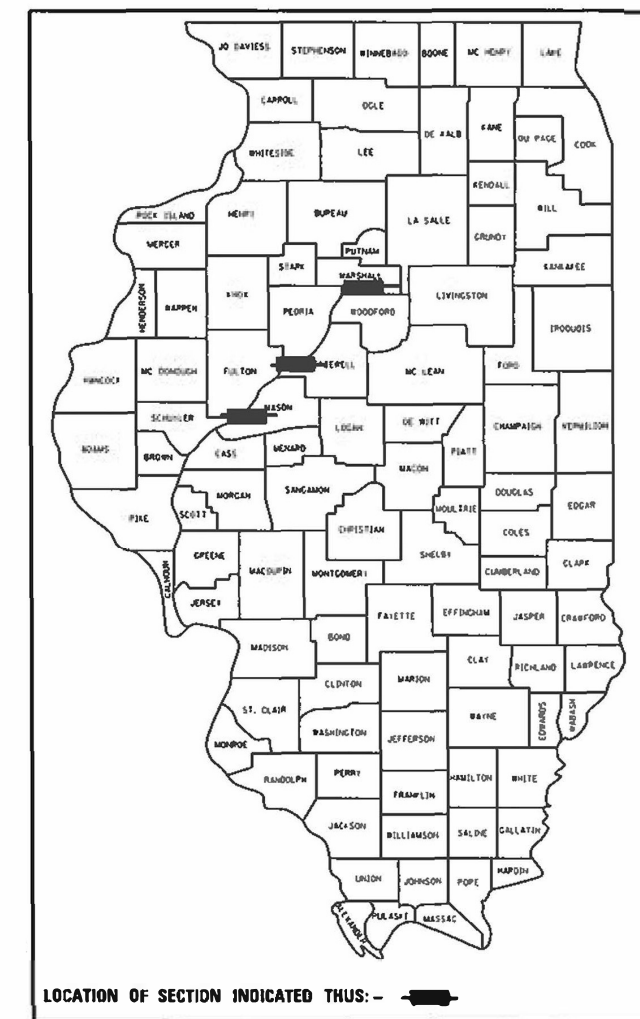
**ADT**

- Location 1 - 2200
- Location 2 - 6850
- Location 3 - 37900
- Location 4 - 37900
- Location 5 - 17500
- Location 6 - 11300
- Location 7 - 27000
- Location 8 - 27000
- Location 9 - 7800

**STATE OF ILLINOIS**  
**DEPARTMENT OF TRANSPORTATION**  
**DIVISION OF HIGHWAYS**  
**PROPOSED**  
**HIGHWAY PLANS**

(VAR) ROUTE VARIOUS  
 SECTION D4 BRIDGE WASHING 2022  
 PROJECT STP-SLFZ(656)  
 TYPE OF IMPROVEMENT  
 MARSHALL, TAZEVELL AND MASON

C-94-081-21



- Location 3 & 4  
S.N. 090-0115 /0070
- Location 5  
S.N. 090-0122
- Location 6  
S.N. 090-0030
- Location 7 & 8  
S.N. 090-0108 /0109



J.U.L.I.E.  
 JOINT UTILITY LOCATION INFORMATION FOR EXCAVATION  
 1-800-892-0123  
 OR 811

PROJECT ENGINEER NICOLE FAYANT (309) 671-3453  
 PROJECT MANAGER STEFON BLUNT (309) 671-3481  
 CONTRACT NO. 68G58  
 CATALOG NO. 036232-00D

STATE OF ILLINOIS  
 DEPARTMENT OF TRANSPORTATION

SUBMITTED DECEMBER 17 20 21  
*Kenneth A. Donnell*  
 REGIONAL ENGINEER

February 4 2022  
*[Signature]*  
 ENGINEER OF DESIGN AND ENVIRONMENT

February 4 2022  
*Stephen M. Lewis*  
 DIRECTOR OF HIGHWAYS PROJECT IMPLEMENTATION

**PRINTED BY THE AUTHORITY  
 OF THE STATE OF ILLINOIS**

Location 1

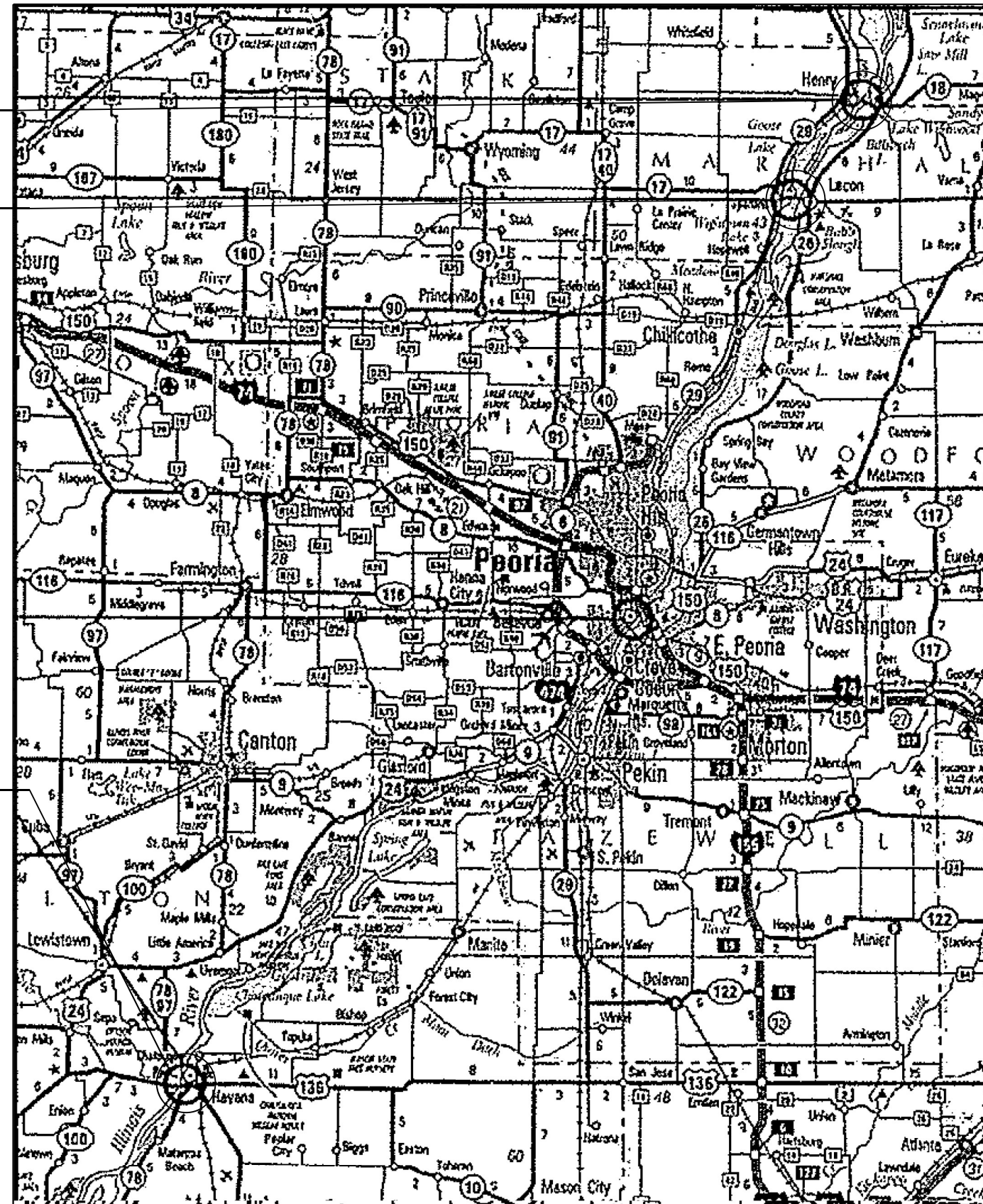
S.N. 062-0036

Location 2

S.N. 062-0003

Location 9

S.N. 063-0002



FILE NAME =	USER NAME = everscl	DESIGNED -	REVISED -
pw\1\dot-pw.bentley.com\PWIDOT\Documents\DOT Offices\District 4\Projects\04.68058\DRAWING\CAD\Drawings\0468058-Entire Set of		CHECKED -	REVISED -
		DATE -	REVISED -
Default	PLOT DATE = 12/17/2021		

**STATE OF ILLINOIS  
DEPARTMENT OF TRANSPORTATION**

**Location Map Structures 1, 2 & 9**

SCALE: SHEET OF SHEETS STA. TO STA.

F.A. RTE.	SECTION	COUNTY	TOTAL SHEETS	SHEET NO.
VAR	D4 BRIDGE WASHING 2022		16	2
MARSHALL, TAZEWELL & MASON			CONTRACT NO. 68C58	
ILLINOIS FED. AID PROJECT				

**COMMITMENTS**

No Commitments have been made for this project.

**GENERAL NOTES**

All Locations: Wash the entire bridge according to section 592 in the Standard Specification For Road and Bridge Construction

**PROJECT SPECIFIC NOTES**

For bridges [location 3, 4, 5, 6, 7 & 8] 090-0115, 090-0070, 090-0122, 090-0030, 090-0108, and 090-0109  
RR protective liability insurance is required. Also required may be Right of Entry permits, Railroad Safety Training, and RR flagmen during work over the RR. The RR flagmen costs will be paid for according to article 109.05 of the Standard Spec\* all other requirements by the RR will not be paid for separately but will be considered included in the cost of RRPLI.  
The railroad under these bridges is the Tazewell & Peoria Railroad, a subsidiary of the Genesee and Wyoming Railroad.  
The contact person is Crystal Galbreath gwappswest@gwrr.com

Additional contacts are needed for the Cedar Street Bridge, Location 6, SN 090-0030.

1. Caterpillar, Inc. owns the land under the bridge on the East side of the river. They should be contacted out of courtesy and to make arrangements for security and access. Contact person: Scott Piscaglia 309-494-2174
2. ADM should be contacted as a courtesy when working under the bridge on the west side of the river in the vicinity of their operations and grain truck deliveries. 309-673-7828

Location 1, 2, and 9 (Henry, Lacon, and Havana):

The Contractor shall notify the local police departments at least 72 hours prior to work on these bridges. This is to allow forewarning because area farmers make appointments with the local police when they need the police to briefly close both ends of the bridge when they want to cross with wide implements."

MODEL: Default  
FILE: \\marl-fs-pw-bentley.com\PW\DOT\Documents\DOT Office\Dir\trct\_d\Project\104\_68G58\CAD\Drawn\CAD\Drawn\104\_68G58-Entire Set of Plans.dgn

USER NAME = everscl	DESIGNED -	REVISED -
	DRAWN -	REVISED -
PLOT SCALE = 100,0000 ' / in.	CHECKED -	REVISED -
PLOT DATE = 12/17/2021	DATE -	REVISED -

STATE OF ILLINOIS  
DEPARTMENT OF TRANSPORTATION

GENERAL NOTES

SCALE: SHEET OF SHEETS STA. TO STA.

F.A. RTE.	SECTION	COUNTY	TOTAL SHEETS	SHEET NO.
VAR	D4 BRIDGE WASHING 2022	•	16	3
• MARSHALL, TAZEWELL & MASON			CONTRACT NO. 68G58	
ILLINOIS FED. AID PROJECT				





CODE NO.	ITEM	UNIT	TOTAL QUANTITY	CONSTRUCTION CODE			
				RURAL	URBAN	URBAN	RURAL
				80(FED) / 20(STATE)	80(FED) / 20(STATE)	80(FED) / 20(STATE)	80(FED) / 20(STATE)
				VARIOUS	VARIOUS	VARIOUS	VARIOUS
				MASON	TAZEWELL	TAZEWELL	MARSHALL
				0047	0047	0047	0047
STP	STP	STP	STP				
70102625	TRAFFIC CONTROL AND PROTECTION, STANDARD 701606	LSUM	1			1	
70102632	TRAFFIC CONTROL AND PROTECTION, STANDARD 701602	LSUM	1		1		
70107025	CHANGEABLE MESSAGE SIGN	CAL DA	70	10	30	10	20
Z0048665	RAILROAD PROTECTIVE LIABILITY INSURANCE	LSUM	1		0.3	0.7	

MODEL:\D:\e\ai\k  
FILE NAME: F:\11\st-pubent\y.com\WDDT\Documents\1\DOT\_Offices\District 4\Projects\04-6655B\CADData\CADDrawings\046655B-Entire Set of Plans.dgn

USER NAME = everscl	DESIGNED -	REVISED -
	DRAWN -	REVISED -
PLOT SCALE = 100.0000' / in.	CHECKED -	REVISED -
PLOT DATE = 12/17/2021	DATE -	REVISED -

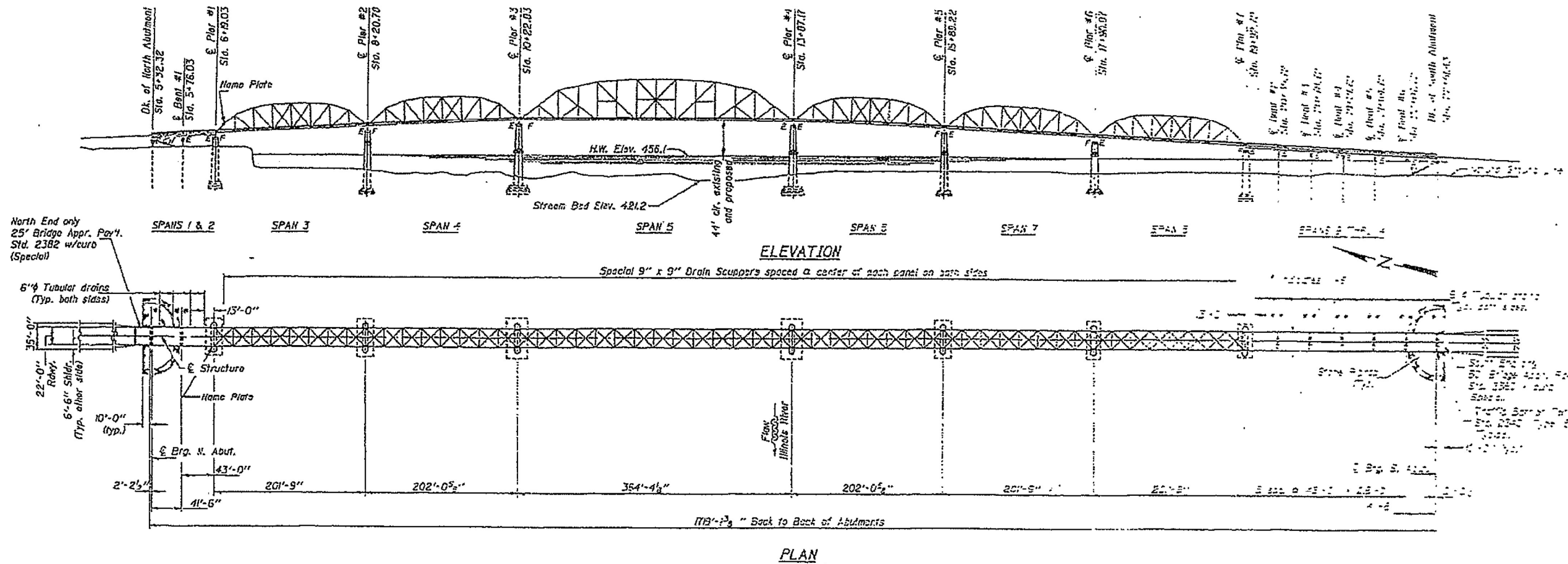
**STATE OF ILLINOIS  
DEPARTMENT OF TRANSPORTATION**

**SUMMARY OF QUANTITIES**

F.A. RTE.	SECTION	COUNTY	TOTAL SHEETS	SHEET NO.
VAR	D4 BRIDGE WASHING 2022	*	16	5
MARSHALL, TAZEWELL & MASON		CONTRACT NO. 68G58		
ILLINOIS FED. AID PROJECT				

# FOR INFORMATION ONLY

## LOCATION 1 (IL 18) Henry Bridge

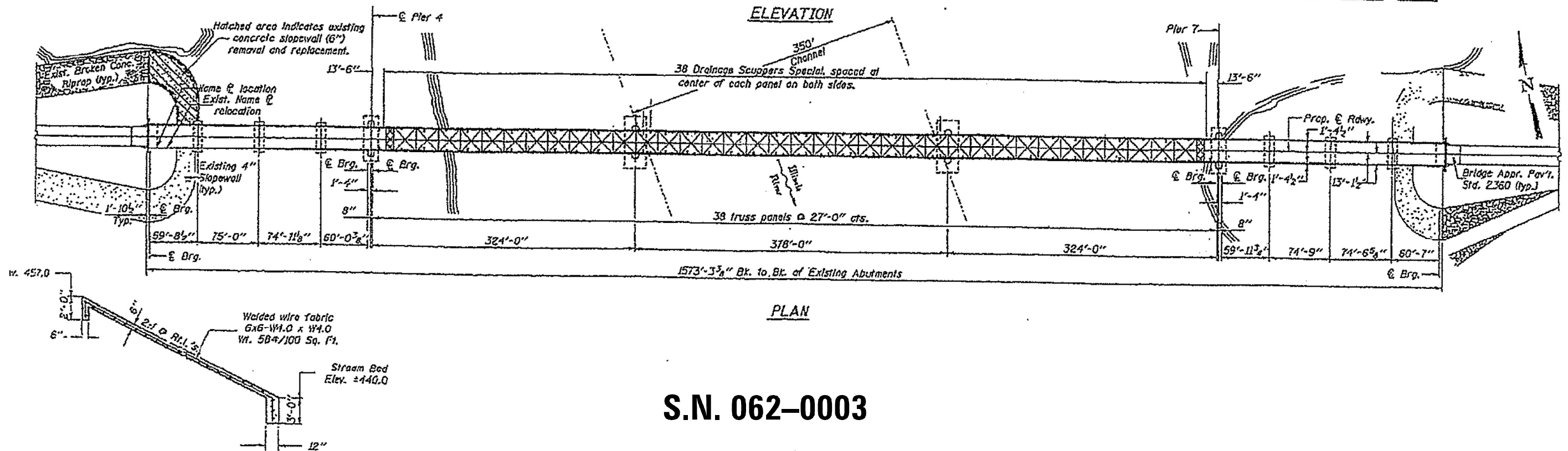
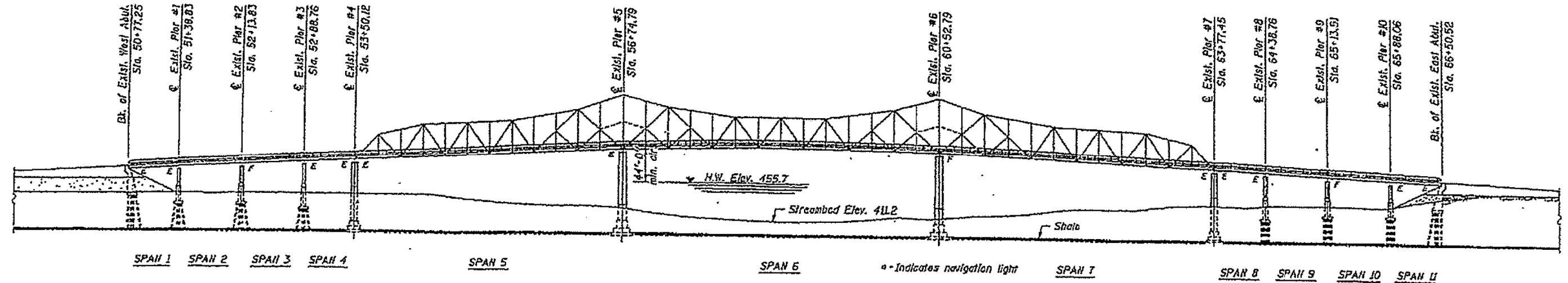


**S.N. 062-0036**

FILE NAME :	USER NAME = everscl	DESIGNED -	REVISED -	<b>STATE OF ILLINOIS DEPARTMENT OF TRANSPORTATION</b>	<b>LOCATION 1 - IL 18 OVER THE ILLINOIS RIVER</b>	F.A. RTE.	SECTION	COUNTY	TOTAL SHEETS	SHEET NO.	
pw:\idot-pw.bentley.com\PWIDOT\Documents\IDOT Offices\District 4\Projects\04.68058\DRAWING\Drawings\0468058-Entire Set of	REVISIONS	REVISIONS	REVISIONS			VAR	D4 BRIDGE WASHING 2022	-	-	15	6
Default	PLOT SCALE = 100.0000' / in.	CHECKED -	REVISIONS			MARSHALL, TAZEWELL & MASON		CONTRACT NO. 68058			
	PLOT DATE = 12/17/2021	DATE -	REVISIONS	SCALE:      SHEET      OF      SHEETS      STA.      TO      STA.		ILLINOIS FED. AID PROJECT					

# FOR INFORMATION ONLY

## LOCATION 2 (IL 17) Lacon Bridge

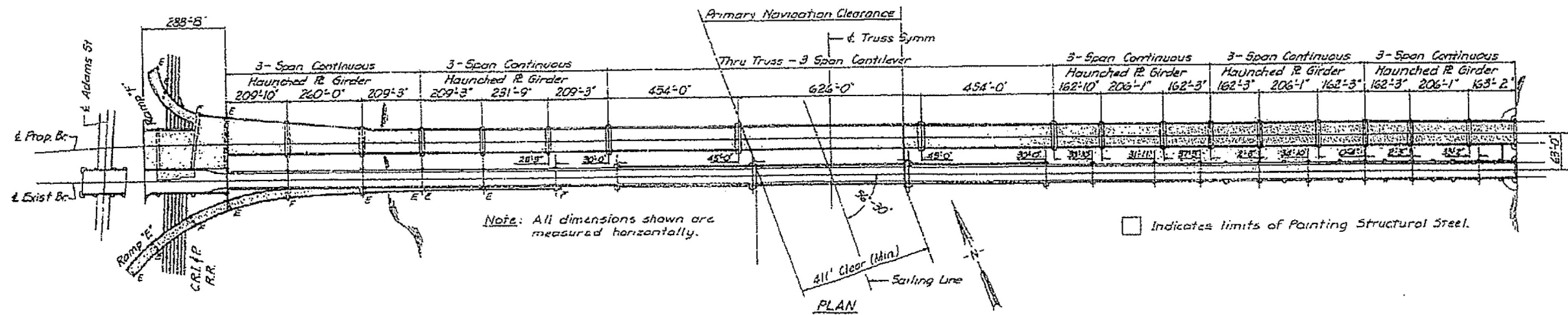
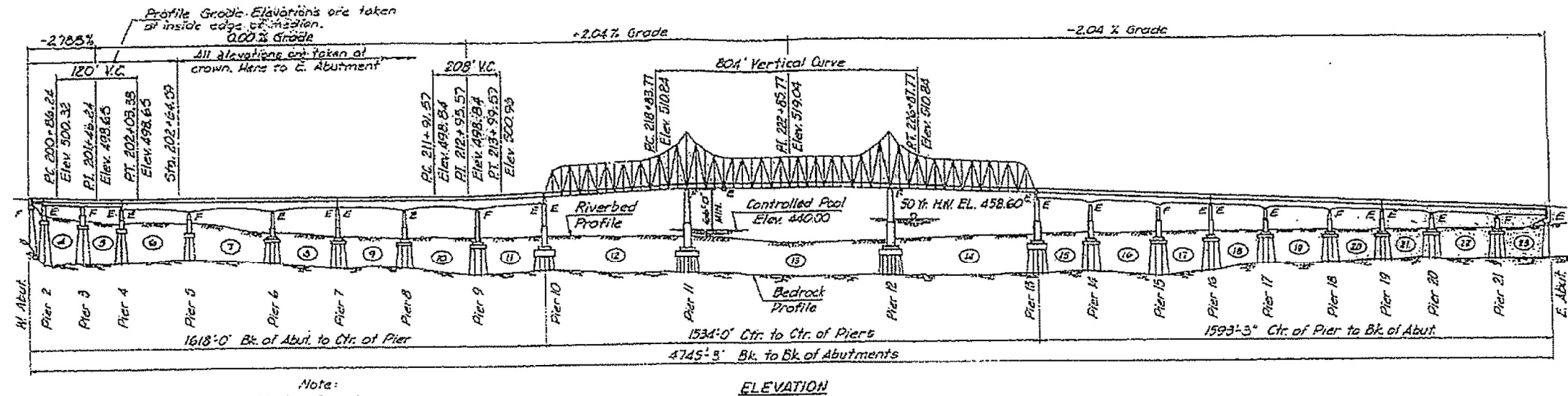


**S.N. 062-0003**

FILE NAME :	USER NAME : everscl	DESIGNED -	REVISED -	<b>STATE OF ILLINOIS DEPARTMENT OF TRANSPORTATION</b>	<b>LOCATION 2 - IL 17 OVER ILLINOIS RIVER</b>	F.A. RTE.	SECTION	COUNTY	TOTAL SHEETS	SHEET NO.
pw:\idot-pw.bentley.com\PIWIDOT\Documents\IDOT Offices\Dist\ict 4\Projects\04.68058\DRAWING\CAD\Drawings\0468058-Entire Set of	\\IDOT\idot-pw.bentley.com\PIWIDOT\Documents\IDOT Offices\Dist\ict 4\Projects\04.68058\DRAWING\CAD\Drawings\0468058-Entire Set of	DRAWN	REVISED	SCALE:	SHEET OF SHEETS	VAR	D4 BRIDGE WASHING 2022	*	16	7
Default	PLOT DATE : 12/17/2021	CHECKED	REVISED	STA. TO STA.	TO STA.	MARSHALL, TAZEWELL & MASON		CONTRACT NO. 68058		
ILLINOIS FED. AID PROJECT										

# FOR INFORMATION ONLY

## LOCATION 3 (WB US 150) McClugage Bridge

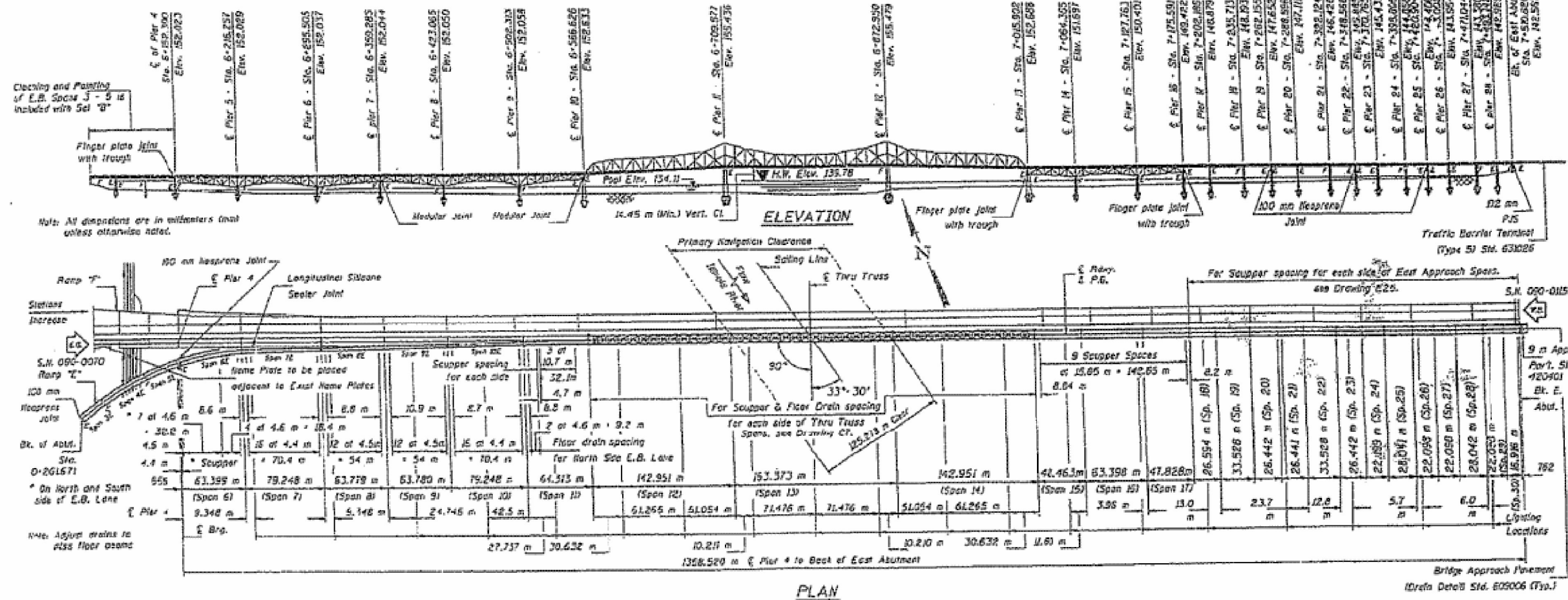


### S.N. 090-0115

FILE NAME =	USER NAME = everscl	DESIGNED -	REVISED -	<b>STATE OF ILLINOIS DEPARTMENT OF TRANSPORTATION</b>	<b>LOCATION 3 - WB McCLUGGAGE BRIDGE (US 150) OVER ILLINOIS RIVER</b>	F.A. RTE.	SECTION	COUNTY	TOTAL SHEETS	SHEET NO.
pw:\idot-pw.bentley.com\PWIDOT\Documents\IDOT Offices\District 4\Projects\04.68058\DRAWING\Drawings\0468058-Entire Set of	pw:\idot-pw.bentley.com\PWIDOT\Documents\IDOT Offices\District 4\Projects\04.68058\DRAWING\Drawings\0468058-Entire Set of					VAR	D4 BRIDGE WASHING 2022		16	8
Default	PLOT DATE = 12/17/2021	CHECKED -	REVISIED -		SCALE:	MARSHALL, TAZEWELL & MASON		CONTRACT NO. 68058		ILLINOIS FED. AID PROJECT
		DATE -	REVISIED -		SHEET	OF	SHEETS	STA.	TO	STA.

# FOR INFORMATION ONLY

## LOCATION 4 (EB US 150) McClugage Bridge

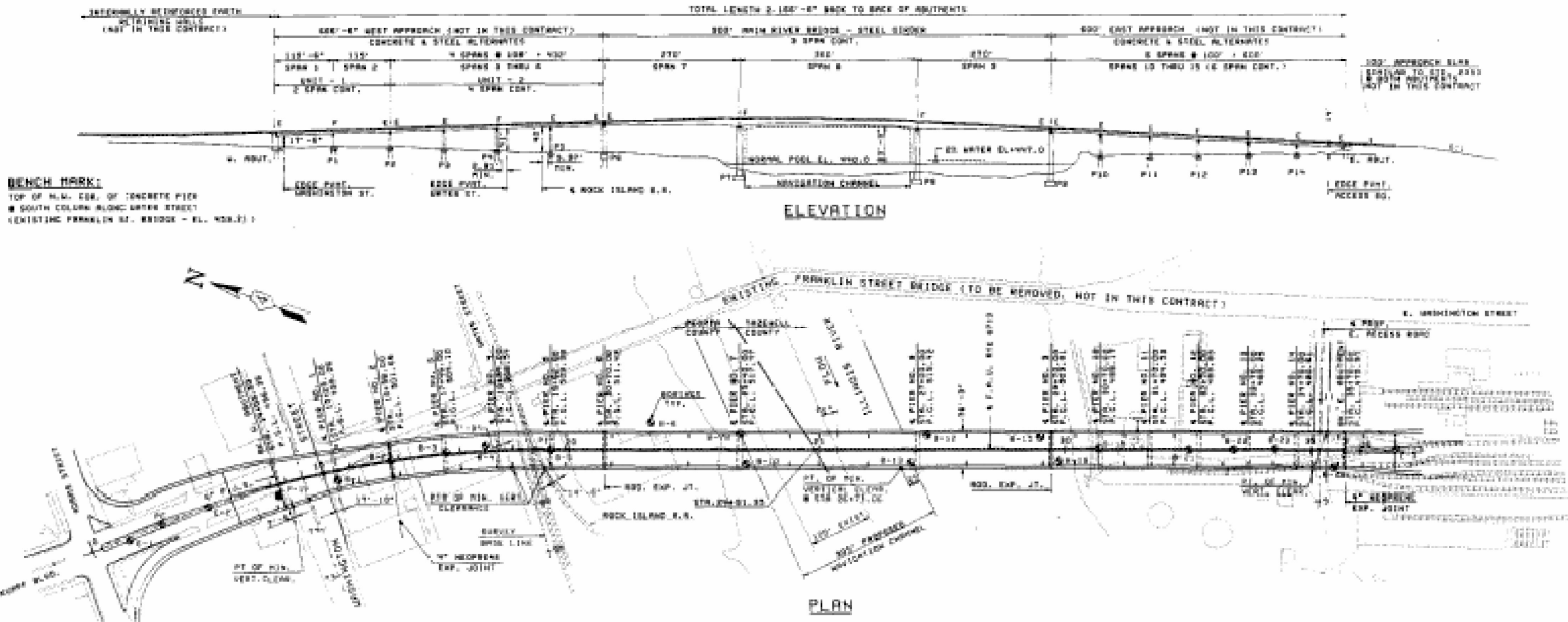


**S.N. 090-0070**

FILE NAME :	USER NAME : everscl	DESIGNED :	REVISED :	<b>STATE OF ILLINOIS</b>	<b>LOCATION 4 - EB McCLUGGAGE BRIDGE (US 150) OVER ILLINOIS RIVER</b>	F.A. RTE.	SECTION	COUNTY	TOTAL SHEETS	SHEET NO.
pw:\idot-pw.bentley.com\PWIDOT Documents\IDOT Offices\District 4\Projects\04.68058\DRAWING\Drawings\0468058-Entire Set of	DDOT Offices\District 4\Projects\04.68058\DRAWING\Drawings\0468058-Entire Set of	CHECKED :	REVISED :	<b>DEPARTMENT OF TRANSPORTATION</b>	SCALE:	VAR	D4 BRIDGE WASHING 2022	-	16	9
Default	PLOT DATE : 12/17/2021	DATE :	REVISED :		SHEET	MARSHALL, TAZEWELL & MASON		CONTRACT NO. 68C58		
					OF	ILLINOIS FED. AID PROJECT				
					SHEETS	STA.				
					TO	TO STA.				

# FOR INFORMATION ONLY

## LOCATION 5 (IL 40) Bob Michel Bridge



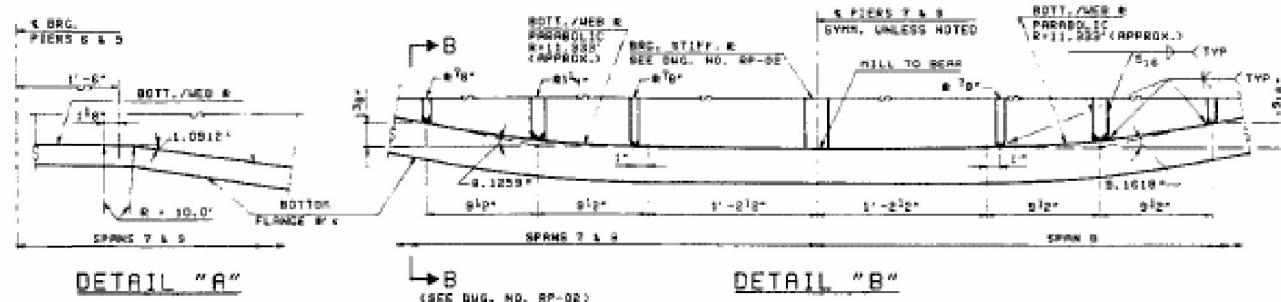
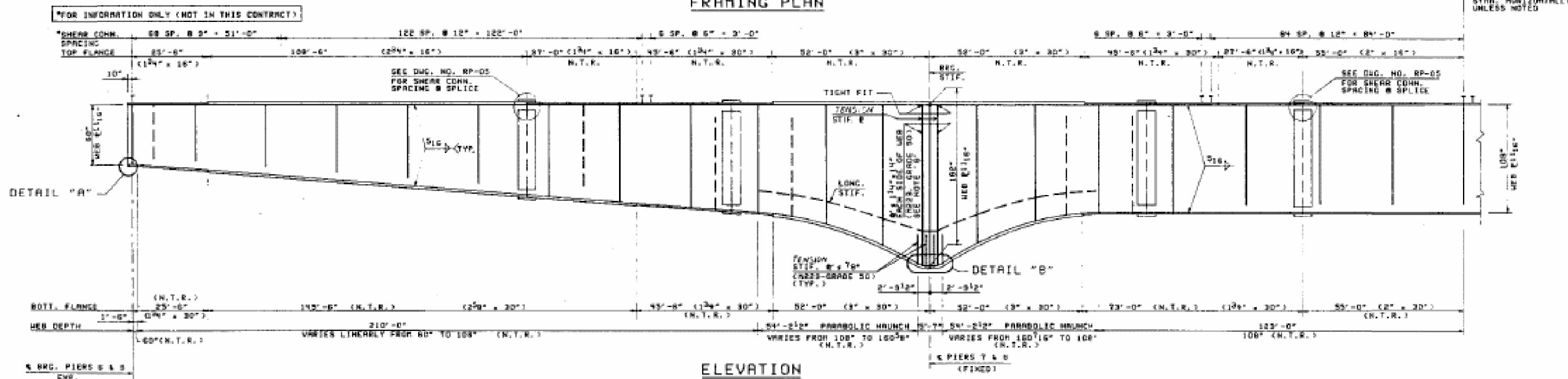
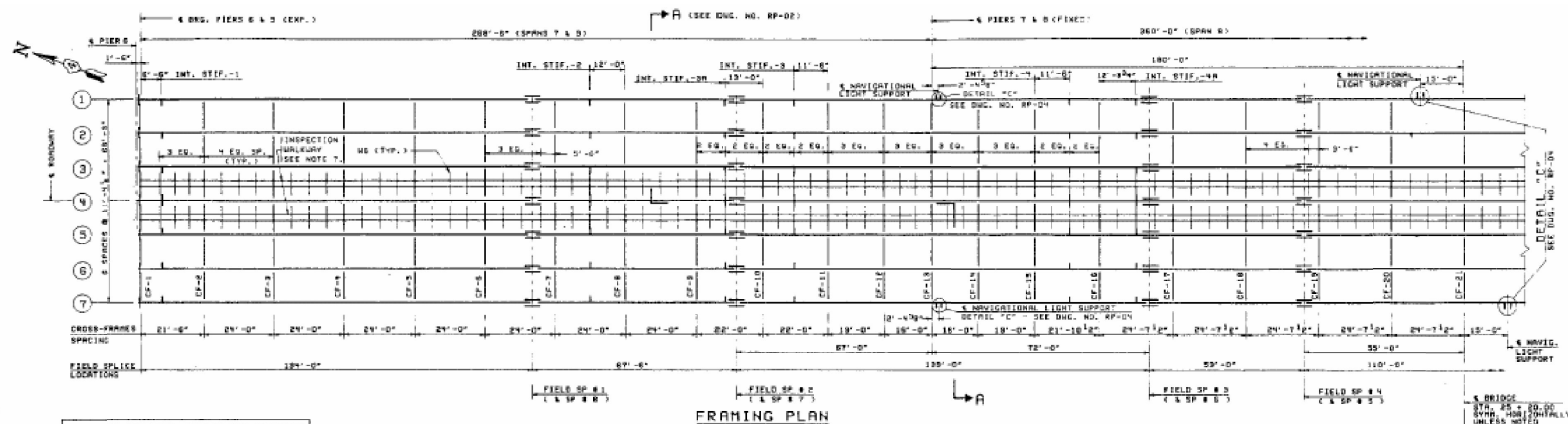
**BENCH MARK:**  
 TOP OF N.M. COR. OF CONCRETE PIER  
 @ SOUTH COLUMN ALONG BRIDGE STREET  
 (EXISTING FRANKLIN ST. BRIDGE - E.L. 408.2)

**S.N. 090-0122**

FILE NAME =	USER NAME = everscl	DESIGNED -	REVISED -	<b>STATE OF ILLINOIS DEPARTMENT OF TRANSPORTATION</b>	<b>LOCATION 5 - BOB MICHEL BRIDGE (IL 40) OVER ILLINOIS RIVER</b>	F.A. RTE.	SECTION	COUNTY	TOTAL SHEETS	SHEET NO.	
pw\idot-pw.bentley.com\PWIDOT\Documents\	DOT Offices\District 4\Projects\04.68058\	DRAWN	REVISED			VAR	D4 BRIDGE WASHING 2022	*	*	16	10
Default		CHECKED	REVISED			MARSHALL, MASON AND TAZEWELL		CONTRACT NO. 68G58		ILLINOIS FED. AID PROJECT	
	PLOT SCALE = 100.0000' / in.	DATE	REVISED	SCALE:	SHEET	OF	SHEETS	STA.	TO	STA.	



# FOR INFORMATION ONLY LOCATION 5 (IL 40) Bob Michel Bridge



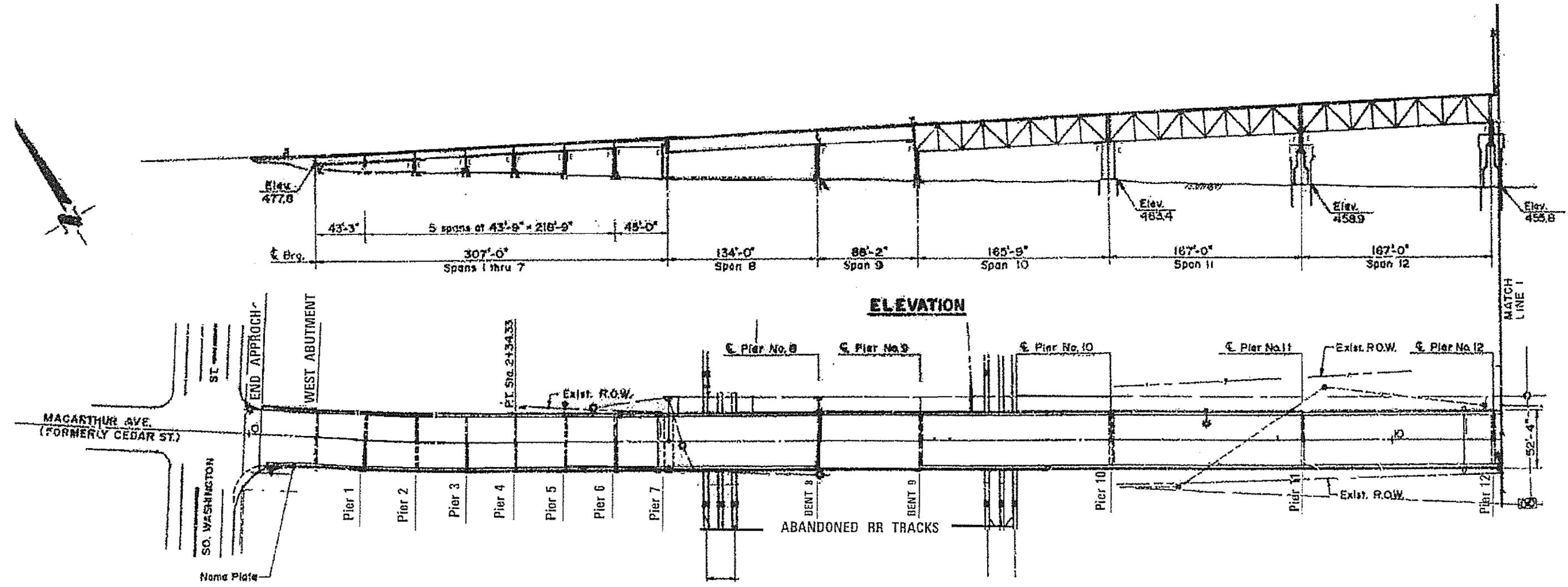
S.N. 090-0122

FILE NAME:	USER NAME = everscl	DESIGNED -	REVISED -	<b>STATE OF ILLINOIS</b> <b>DEPARTMENT OF TRANSPORTATION</b>	<b>LOCATION 5 - BOB MICHEL BRIDGE (IL 40) OVER ILLINOIS RIVER</b>	F.A. RTE.	SECTION	COUNTY	TOTAL SHEETS	SHEET NO.
pw\1\dot-pw.bentley.com\PWIDOT\Documents\	MDOT Offices\District 4\Projects\04.68058\	DRAWN	REVISED	SCALE:	SHEET OF SHEETS	STA. TO STA.	D4 BRIDGE WASHING 2022	*	16	11
Default	PLOT DATE = 12/17/2021	CHECKED -	REVISED -				MARSHALL, MASON AND TAZEWELL			CONTRACT NO. 68C58
		DATE -	REVISED -				ILLINOIS FED. AID PROJECT			

# FOR INFORMATION ONLY

## LOCATION 6 (IL 116 / IL 8) Cedar Street Bridge

*Existing Structure: Structure No. 090-0030. Completed in 1932: Thirty four spans. 7 simple multibeam, 17 simple riveted two plate girder spans; 7 simple deck truss and 3 haunched cantilever truss units. Total length = 3700' back to back abuts. 49'-2" roadway.*



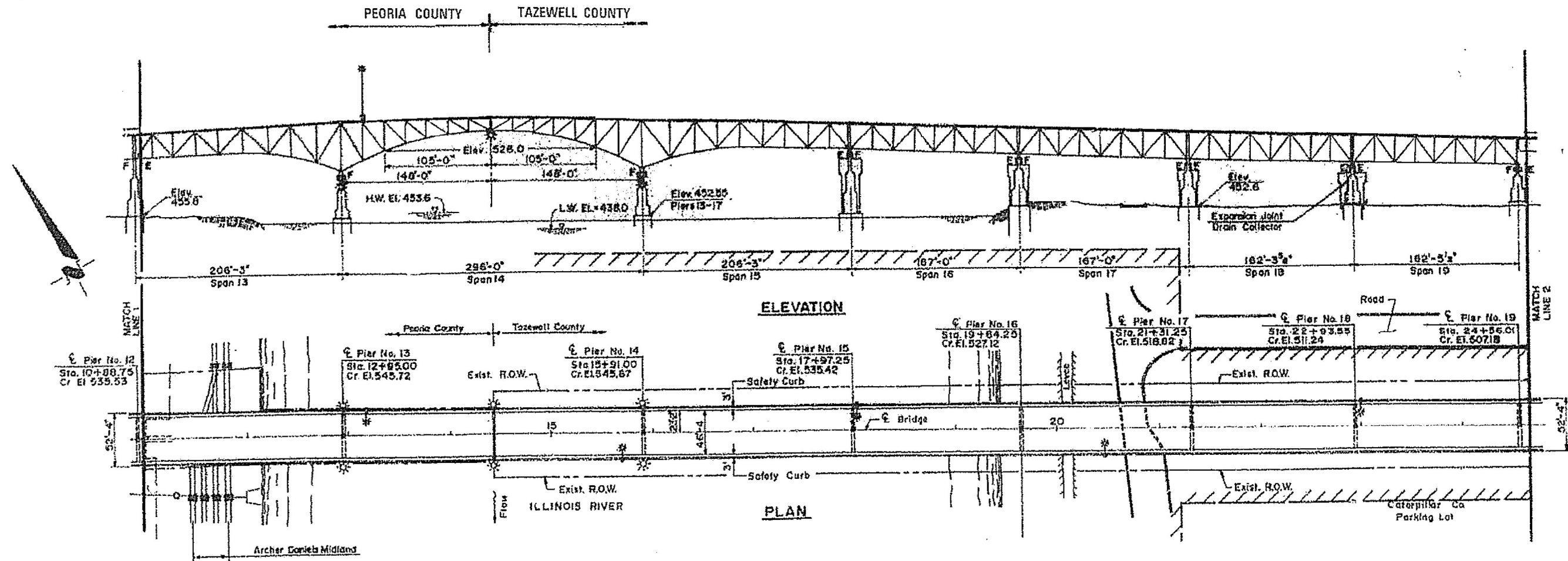
## CEDAR STREET BRIDGE SPANS 1-12

### SN 090-0030

FILE NAME :	USER NAME = everscl	DESIGNED -	REVISED -	<b>STATE OF ILLINOIS</b> <b>DEPARTMENT OF TRANSPORTATION</b>	<b>LOCATION 6 - CEDAR STREET (IL 116 /IL 8) OVER ILLINOIS RIVER</b>	F.A. RTE.	SECTION	COUNTY	TOTAL SHEETS	SHEET NO.	
pw\idot-pw.bentley.com\PWIDOT\Documents\IDOT Offices\District 4\Projects\04.68058\DRAWING\Drawings\0468058-Entire Set of	DESIGNED -	REVISED -	VAR D4 BRIDGE WASHING 2022			-	-	16	12		
Default	PLOT SCALE = 100.0000' / 1".	CHECKED -	REVISED -			MARSHALL, TAZEVELL & MASON		CONTRACT NO. 68058			
	PLOT DATE = 12/17/2021	DATE -	REVISED -			ILLINOIS FED. AID PROJECT					
					SCALE:	SHEET	OF	SHEETS	STA.	TO	STA.

# FOR INFORMATION ONLY

## LOCATION 6 (IL 116 / IL 8) Cedar Street Bridge



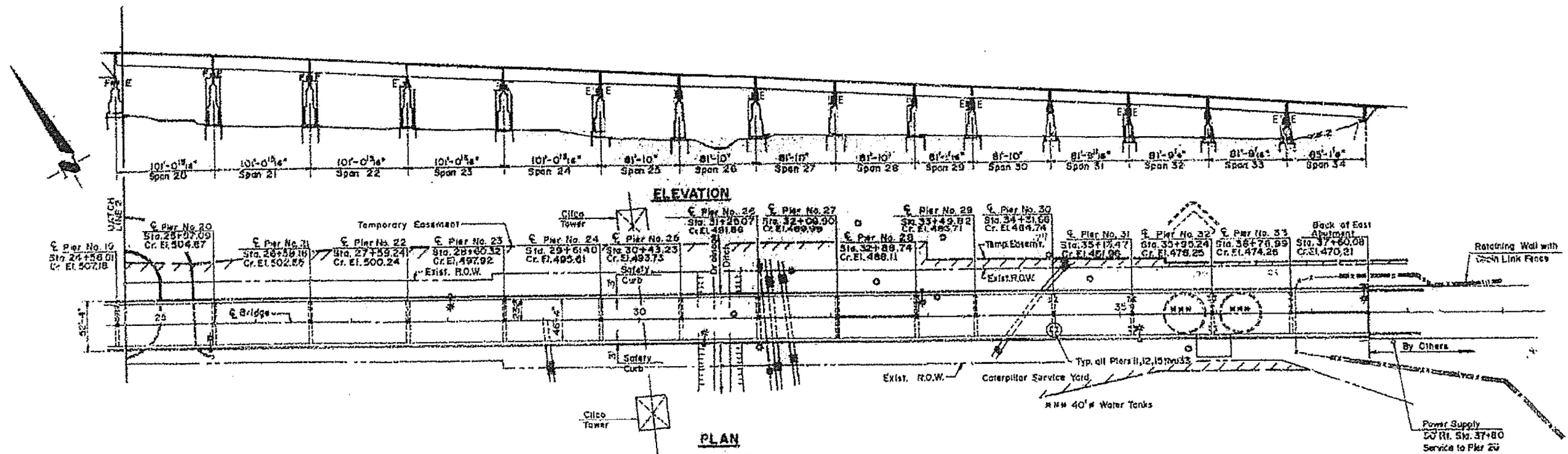
## CEDAR STREET BRIDGE SPANS 13-19

### SN 090-0030

FILE NAME :	USER NAME : everscl	DESIGNED -	REVISED -	<b>STATE OF ILLINOIS DEPARTMENT OF TRANSPORTATION</b>	<b>LOCATION 6 - CEDAR STREET (IL 116 /IL 8) OVER ILLINOIS RIVER</b>	F.A. RTE.	SECTION	COUNTY	TOTAL SHEETS	SHEET NO.
pw:\idot-pw.bentley.com\PWIDOT\Documents\IDOT Offices\District 4\Projects\04.68058\DRAWING\CADDrawings\0468058-Entire Set of	VAR	D4 BRIDGE WASHING 2022	-			16	13			
Default	MARSHALL, TAZEVELL & MASON		CONTRACT NO. 68058							
PLOT DATE = 12/17/2021	ILLINOIS FED. AID PROJECT									

# FOR INFORMATION ONLY

## LOCATION 6 (IL 116 / IL 8) Cedar Street Bridge



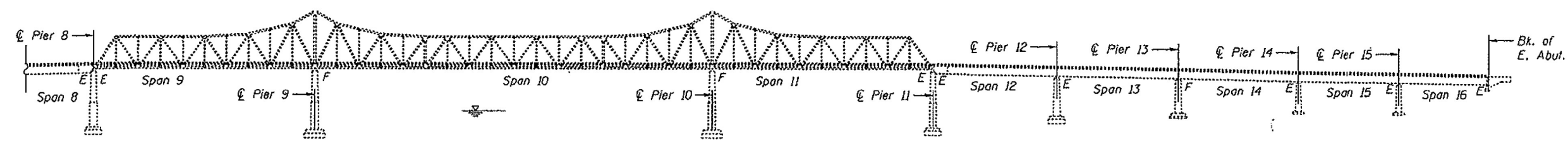
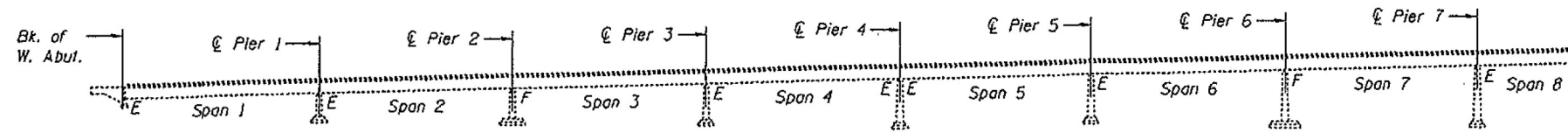
## CEDAR STREET BRIDGE SPANS 20-34

### SN 090-0030

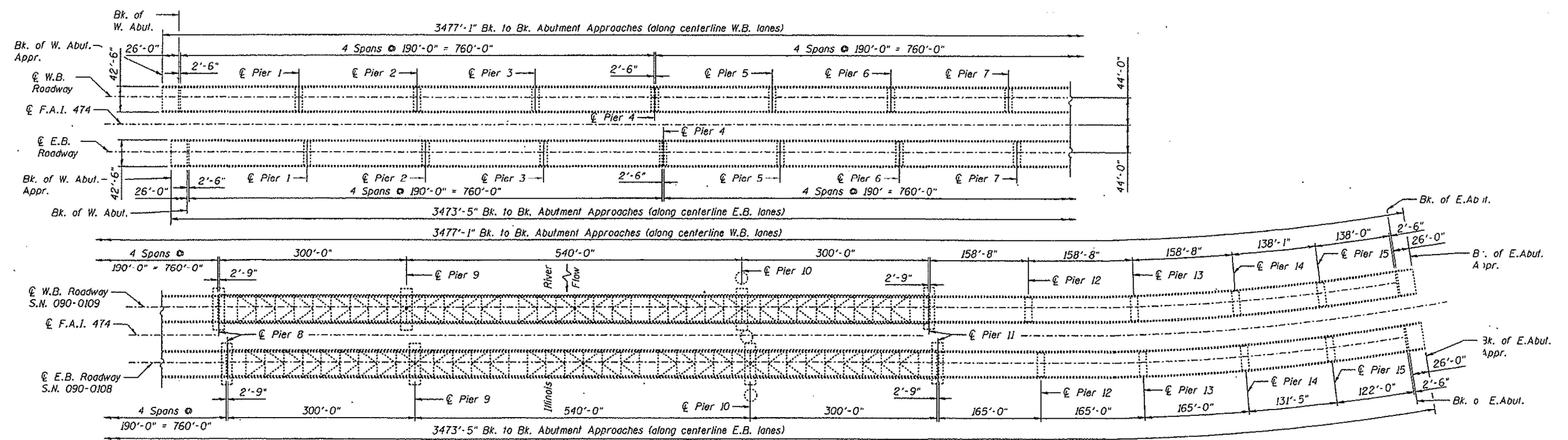
FILE NAME =	USER NAME = everscl	DESIGNED -	REVISED -	<b>STATE OF ILLINOIS DEPARTMENT OF TRANSPORTATION</b>	<b>LOCATION 6 - CEDAR STREET (IL 116 /IL 8) OVER ILLINOIS RIVER</b>	F.A. RTE.	SECTION	COUNTY	TOTAL SHEETS	SHEET NO.
pw\dot-pw.bentley.com\PIWIDOT\Documents\	MDOT Offices\District 4\Projects\04.68058\	DRAWN CADDrawings\0468058-Entire Set of	REVISED -			VAR	D4 BRIDGE WASHING 2022	•	16	14
Default	PLOT SCALE = 100.0000' / in.	CHECKED -	REVISED -			MARSHALL, TAZEWELL & MASON		CONTRACT NO. 68058		ILLINOIS FED. AID PROJECT
	PLOT DATE = 12/17/2021	DATE -	REVISED -	SCALE: SHEET OF SHEETS STA. TO STA.						

# FOR INFORMATION ONLY

## LOCATION 7 & 8 (I - 474 and US 24) Shade-Lohmann Bridge



**ELEVATION**



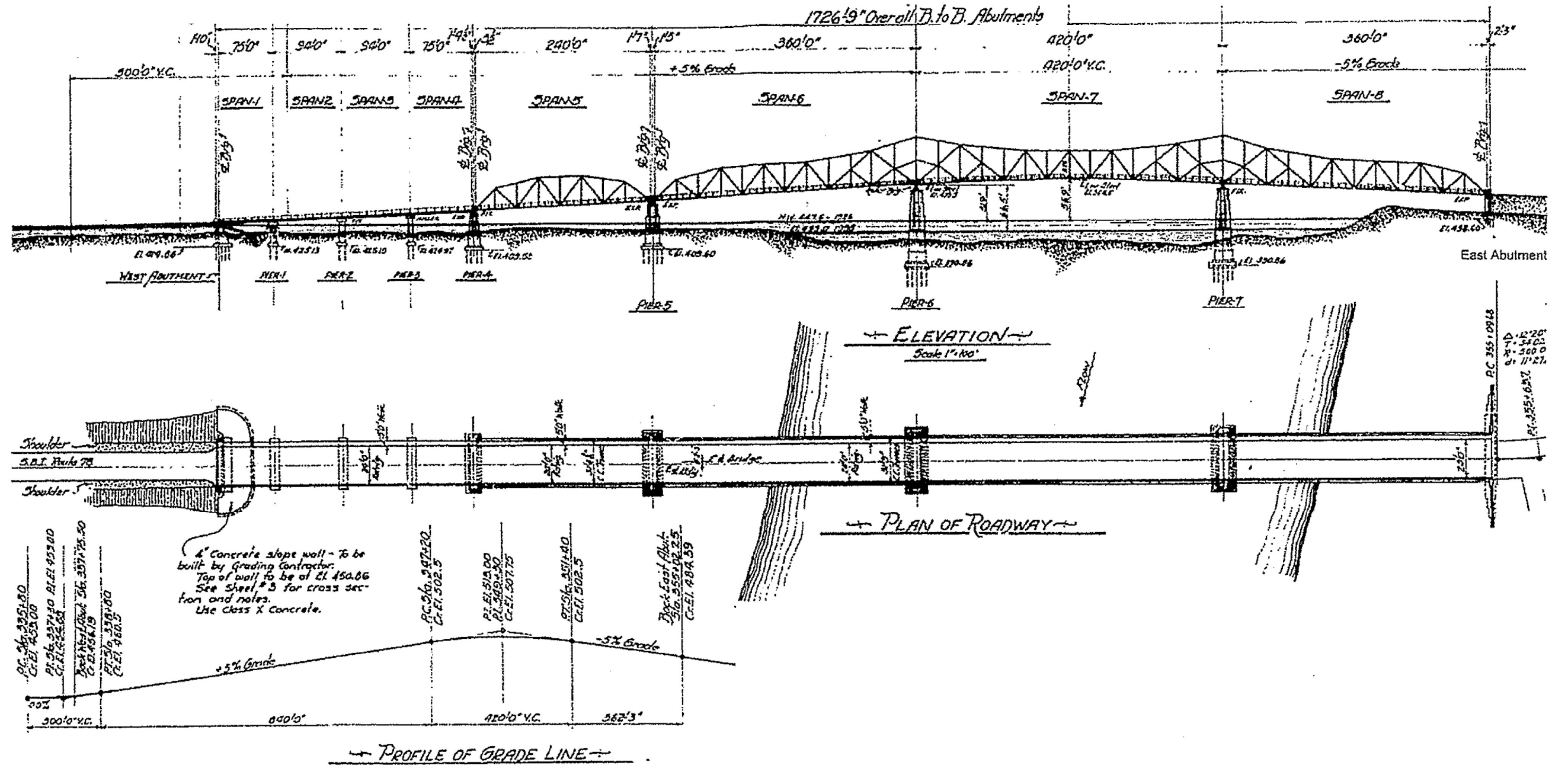
**PLAN**

**S.N. 090-0108 / 090-0109**

FILE NAME =	USER NAME = everscl	DESIGNED -	REVISED -	<b>STATE OF ILLINOIS</b> <b>DEPARTMENT OF TRANSPORTATION</b>	<b>Location 7 &amp; 8 - Shade Lohmann Bridge (I-474 / US 24) over Illinois River</b>	F.A. RTE.	SECTION	COUNTY	TOTAL SHEETS	SHEET NO.	
pw:\dot-pw.bentley.com\PWIDOT\Documents\DOT Offices\District 4\Projects\04.68058\DRAWING\CAD\Drawings\0468058-Entire Set of	DOT Offices\District 4\Projects\04.68058\DRAWING\CAD\Drawings\0468058-Entire Set of	DRAWN -	REVISED -			VAR D4 BRIDGE WASHING 2022	-	-	16	15	
Default	PLOT DATE = 12/17/2021	CHECKED -	REVISED -			MARSHALL, TAZEWELL & MASON		CONTRACT NO. 68C58			
		DATE -	REVISED -			ILLINOIS FED. AID PROJECT					

# FOR INFORMATION ONLY

## LOCATION 9 (IL 136) Scott Lucas Bridge/Havana



**S.N. 063-0002**

FILE NAME :	USER NAME = everscl	DESIGNED -	REVISED -	<b>STATE OF ILLINOIS DEPARTMENT OF TRANSPORTATION</b>	<b>LOCATION 9 - IL 136 OVER ILLINOIS RIVER</b>	F.A. RTE.	SECTION	COUNTY	TOTAL SHEETS	SHEET NO.
pw:\idot-pw.bentley.com\PWIDOT\Documents\IDOT Offices\District 4\Projects\04.68058\DRAWING\Drawings\04.68058-Entire Set of	IDOT Offices\District 4\Projects\04.68058\DRAWING\Drawings\04.68058-Entire Set of	DRAWN -	REVISED -	SCALE:	SHEET OF SHEETS STA. TO STA.	VAR D4 BRIDGE WASHING 2022			16	16
Default	PLOT DATE = 12/17/2021	CHECKED -	REVISED -			MARSHALL, TAZEWELL & MASON		CONTRACT NO. 68058		
						ILLINOIS FED. AID PROJECT				