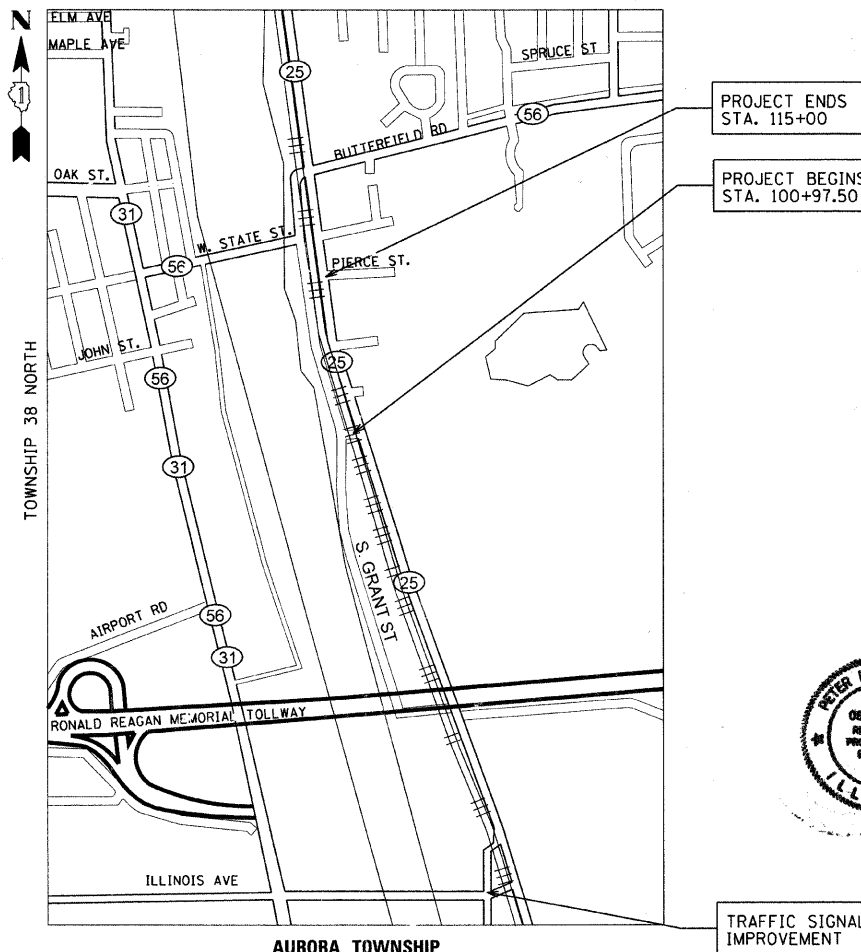


STATE OF ILLINOIS
DEPARTMENT OF TRANSPORTATION
DIVISION OF HIGHWAYS

**PROPOSED
HIGHWAY PLANS**

FAU ROUTE 2503 (IL 25)
SECTION TWP-1-T
SOUTH OF IL 56 TO NORTH OF I-88 & AT ILLINOIS AVE
DRAINAGE & TRAFFIC SIGNAL IMPROVEMENTS

KANE COUNTY
C-91-380-10
RANGE 8 EAST



GROSS & NET LENGTH = 1,402.50 FT. = 0.27 MILES

F.A.U. RTE.	SECTION	COUNTY	TOTAL SHEETS	SHEET NO.
2503	TWP-1-T	KANE	43	1
ILLINOIS			CONTRACT NO. 60K07	

D-91-380-10



GRAEF 8501 W. Higgins Road; Suite 280
Chicago, Illinois 60631
(773) 399-0112

STATE OF ILLINOIS
DEPARTMENT OF TRANSPORTATION
DIVISION OF HIGHWAYS

SUBMITTED JANUARY 24, 20 11
Diane O'Keefe
DEPUTY DIRECTOR OF HIGHWAYS, REGION ENGINEER

March 4 20 11
Scott E. Stitt, P.E.
acting ENGINEER OF DESIGN AND ENVIRONMENT

March 4 20 11
Christine M. Roeder
DIRECTOR OF HIGHWAYS, CHIEF ENGINEER

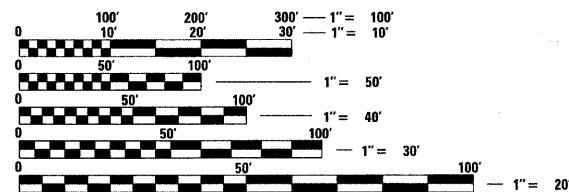
**PRINTED BY THE AUTHORITY
OF THE STATE OF ILLINOIS**

FOR INDEX OF SHEETS, SEE SHEET NO. 2

TRAFFIC DATA

EXISTING ADT = 6,300 TO 9,000 (2007)
SPEED LIMIT = 40 MPH

THE IMPROVEMENT IS LOCATED WITHIN
THE VILLAGE OF NORTH AURORA



FULL SIZE PLANS HAVE BEEN PREPARED USING STANDARD
ENGINEERING SCALES. REDUCED SIZED PLANS WILL NOT
CONFORM TO STANDARD SCALES. IN MAKING MEASUREMENTS
ON REDUCED PLANS, THE ABOVE SCALES MAY BE USED.

J.U.L.I.E.
JOINT UTILITY LOCATION INFORMATION FOR EXCAVATION
1-800-892-0123
OR 811

PROJECT ENGINEER: PETER JOHNSTON (GRAEF) 773-399-0112
PROJECT MANAGER: KEN ENG (IDOT) 847-705-4247

CONTRACT NO. 60K07

