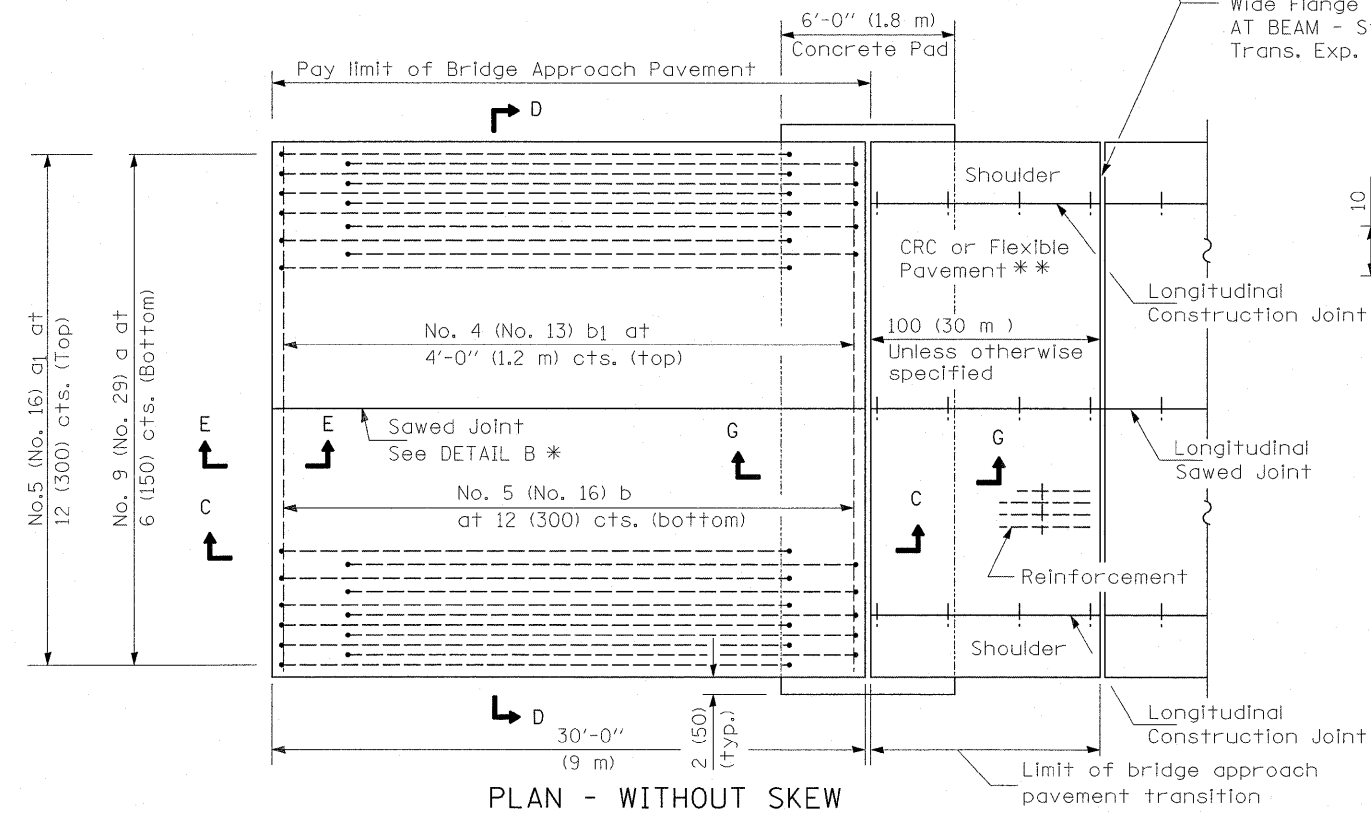


PLAN - WITH SKEW



PLAN - WITHOUT SKEW

* Saw ϕ or lane edge if poured two or more lane widths at a time.
 ** Omit Reinforcement, tie bars and Long. sawed Jt. for Flexible Pavement.

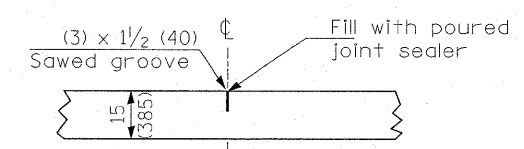
NEW CONSTRUCTION

Longitudinal Construction Joint

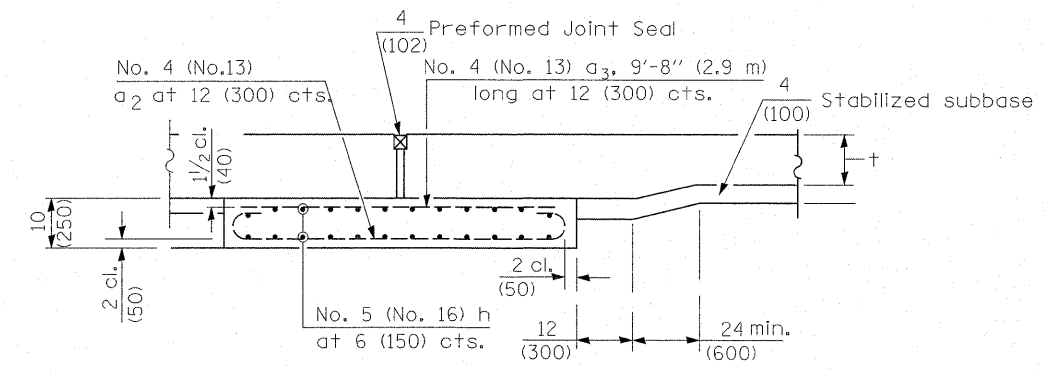
Longitudinal Construction Joint

Rigid Pavement only:

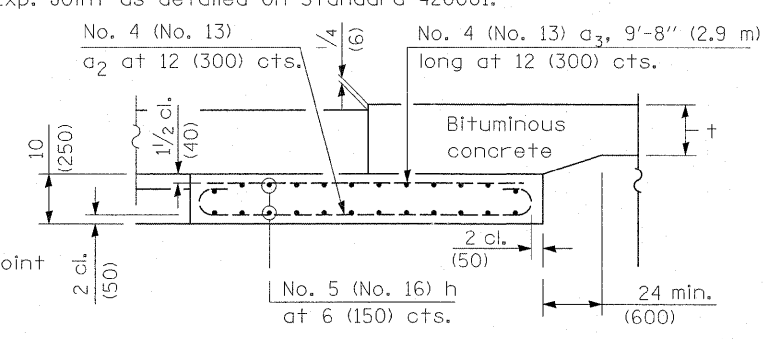
Wide Flange Beam Terminal Joint (See DETAIL AT BEAM - Standard 421101 or 421106) or 2 (50) Trans. Exp. Joint as detailed on Standard 420001.



DETAIL B*
(Reinforcement Not Shown)



SECTION G-G - RIGID PAVEMENT
(Showing reinforcement)



SECTION G-G - FLEXIBLE PAVEMENT
(Showing reinforcement)

GENERAL NOTES

THICKNESS-"t"=Thickness of Pavement.
 See Standard 421001 for reinforcement details not shown.
 See Standard 420001 for joint details not shown.
 All dimensions are in inches (millimeters) unless otherwise shown.

FILE NAME =	USER NAME = midyja	DESIGNED -	REVISED -	STATE OF ILLINOIS DEPARTMENT OF TRANSPORTATION	BRIDGE APPROACH PAVEMENT			F.A.P. RTE.	SECTION	COUNTY	TOTAL SHEETS	SHEET NO.
ct:\pw\work\pavedot\midyja\d0256471\D17041	p-shr-plan.dgn	DRAWN -	REVISED -					846	4 B-2-BR	WILL	26	16
PLOT SCALE = 50.0000' / IN.		CHECKED -	REVISED -					CONTRACT NO. 60L50				
PLOT DATE = 2/18/2011		DATE -	REVISED -					ILLINOIS FED. AID PROJECT				
				SCALE:	SHEET NO. 1 OF 2 SHEETS	STA.	TO STA.					