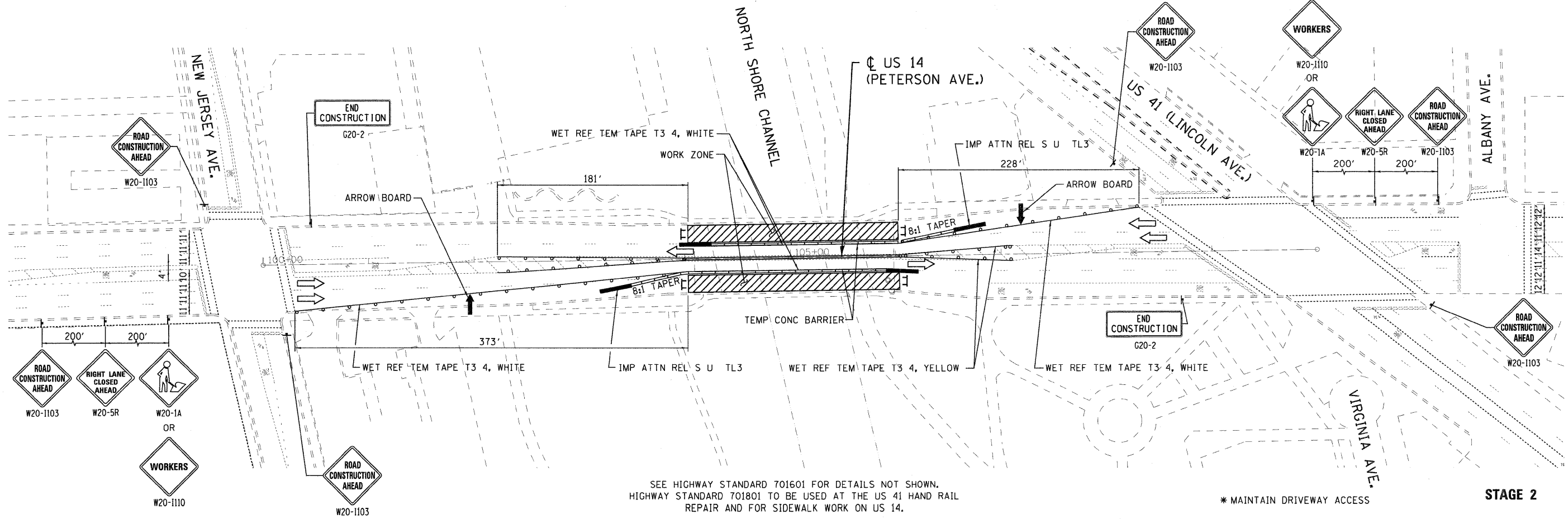


SEE HIGHWAY STANDARD 701601 FOR DETAILS NOT SHOWN.
 HIGHWAY STANDARD 701801 TO BE USED AT THE US 41 HAND RAIL
 REPAIR AND FOR SIDEWALK WORK ON US 14.

STAGE 1



SEE HIGHWAY STANDARD 701601 FOR DETAILS NOT SHOWN.
 HIGHWAY STANDARD 701801 TO BE USED AT THE US 41 HAND RAIL
 REPAIR AND FOR SIDEWALK WORK ON US 14.

STAGE 2

FILE NAME = G:\projects\2182165_0868\CADD\Civil\Sh+D171410-04-R01.dgn



| | | |
|---------------------------|-----------------|-----------|
| USER NAME = zpland | DESIGNED - DLP | REVISED - |
| PLOT SCALE = 50.00' / IN. | DRAWN - ENTRAN | REVISED - |
| PLOT DATE = 3/1/2011 | CHECKED - TMH | REVISED - |
| | DATE - 02/18/11 | REVISED - |

**STATE OF ILLINOIS
 DEPARTMENT OF TRANSPORTATION**

| | |
|--|----------------------------------|
| US 14 (PETERSON AVE.) & US 41 (LINCOLN AVE.) OVER NORTH SHORE CHANNEL | |
| MAINTENANCE OF TRAFFIC - STAGES 1 AND 2 | |
| SCALE: 50.00' / IN. | SHEET NO. OF SHEETS STA. TO STA. |

| | | | | |
|---|--------------------|-------------|--------------------|-------------|
| F.A.P. RTE. 341 | SECTION 2010-070-1 | COUNTY COOK | TOTAL SHEETS 18 | SHEET NO. 4 |
| FED. ROAD DIST. NO. 1 ILLINOIS FED. AID PROJECT | | | CONTRACT NO. 60L55 | |