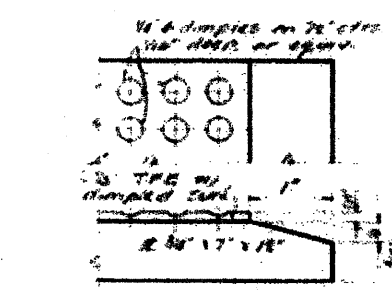
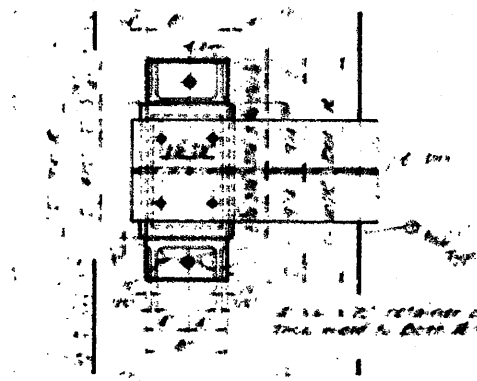
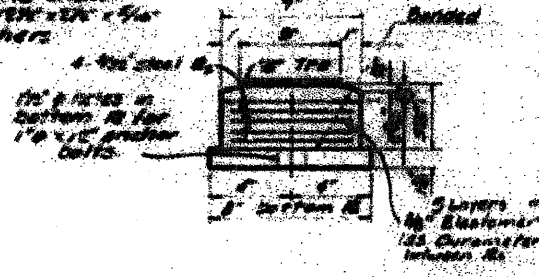
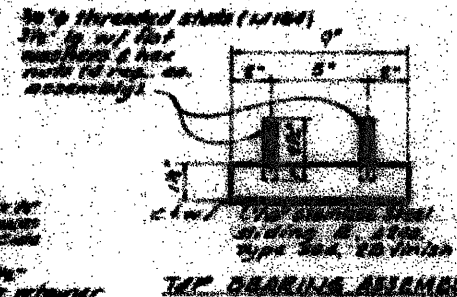
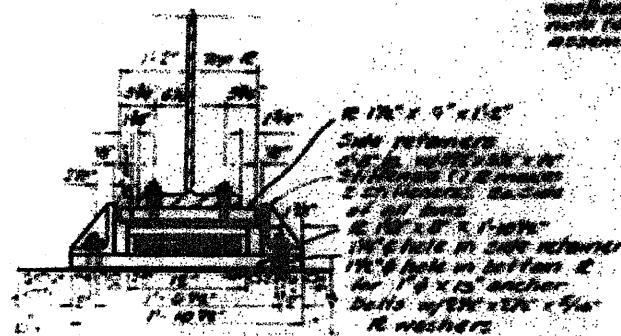
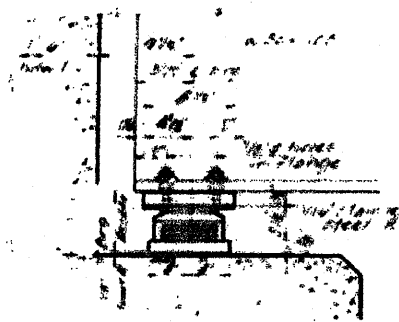
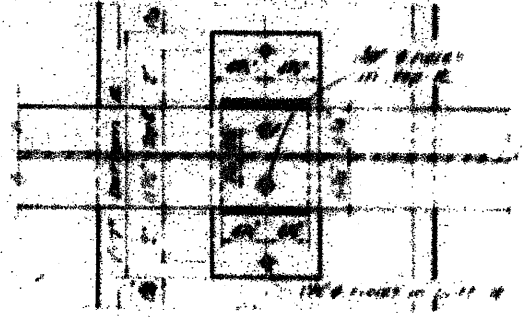
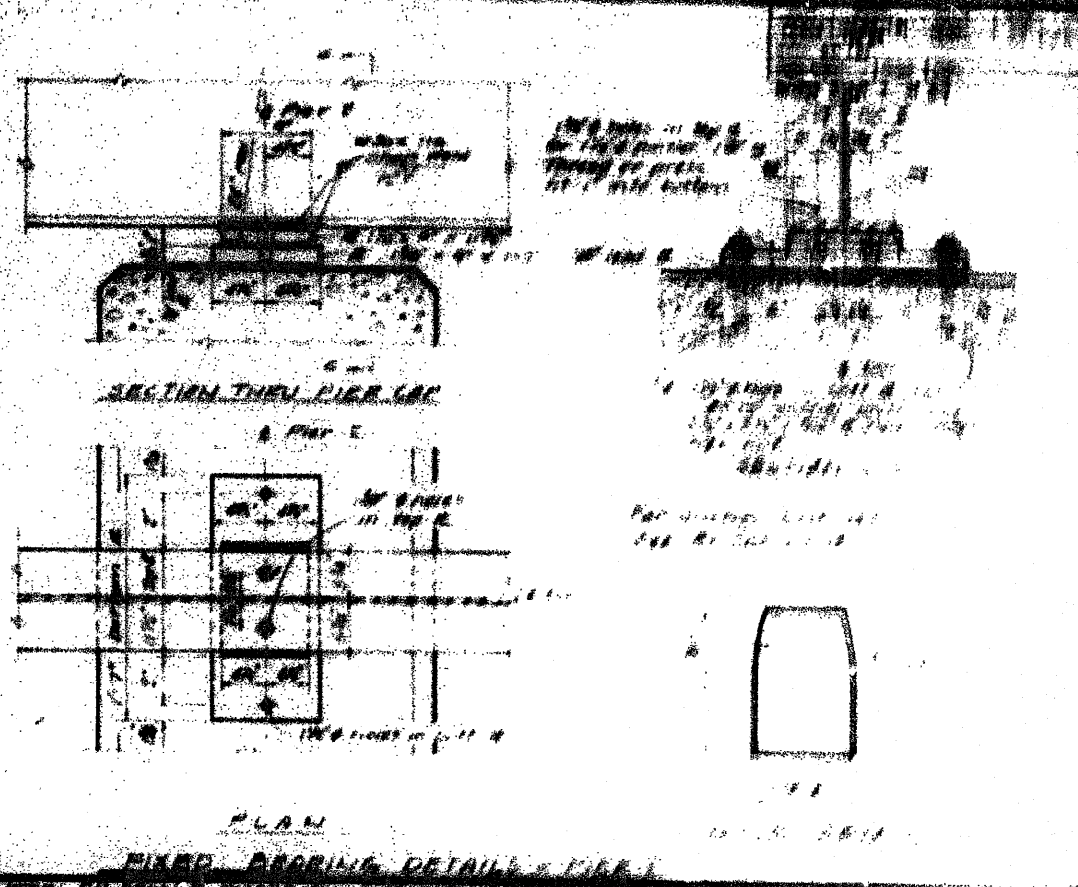


# FOR INFORMATION ONLY

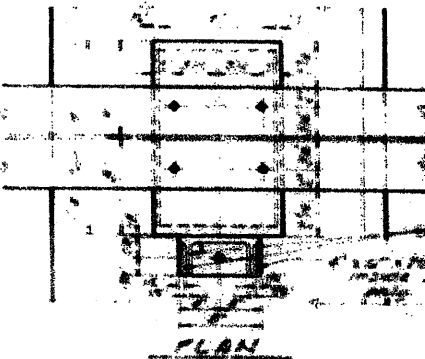
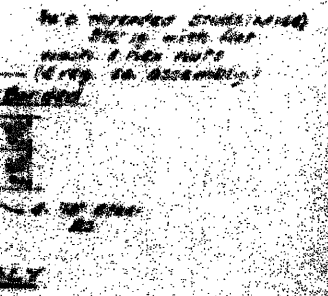
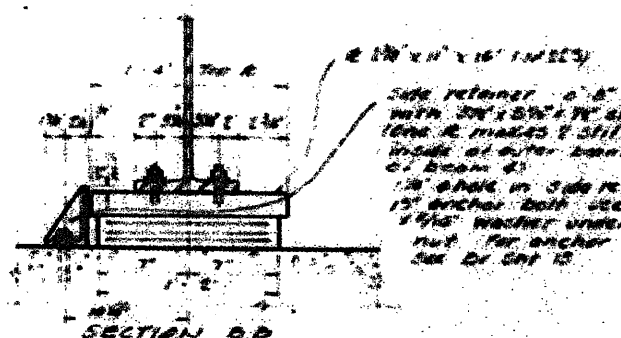
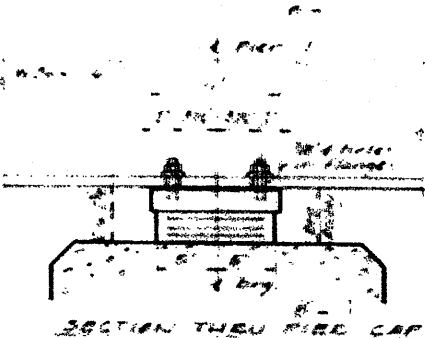


NOTE: THE TPE SHEET SHALL BE BONDED DIRECTLY TO THE TOP STEEL R WITH A TWO COMPONENT, MEDIUM VISCOSITY EPOXY RESIN, CONFORMING TO THE REQUIREMENTS OF THE FEDERAL SPEC. MASH 4-136, TYPE 1. THE BEARING AGENT SHALL BE APPLIED ON THE FULL AREA OF THE CONTACT SURFACES. BONDING OF TPE SHEET DURING VULCANIZING PROCESS WILL BE PERMITTED PROVIDED THE PROCESS AND METHOD OF ADJUSTING HEIGHT IS APPROVED BY THE ENGINEER.

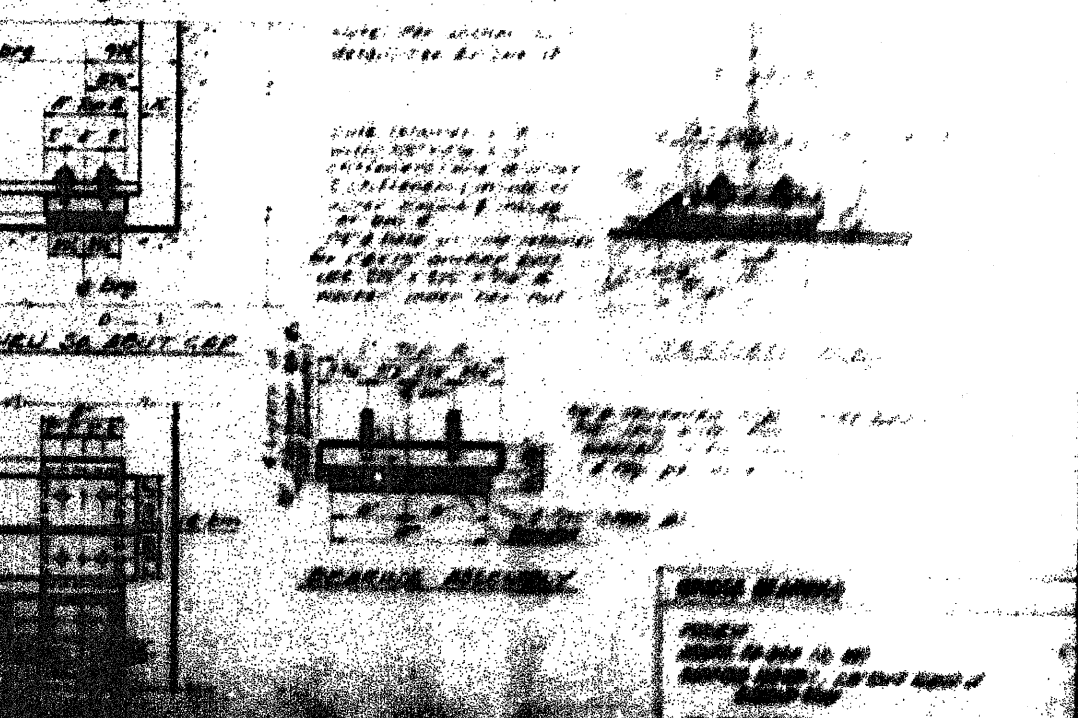
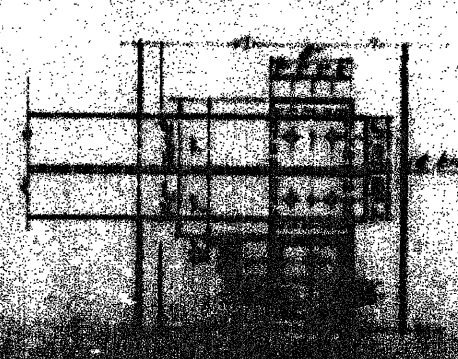
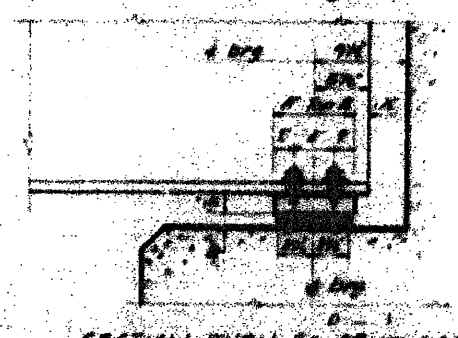
TYPE II BEARING DETAILS @ NORTH ABUTMENT



PIER BEARING DETAILS @ PIER



TYPE I BEARING DETAILS @ PIER



FILE NAME =	USER NAME = linkj	DESIGNED -	REVISED -
G:\BR\Bridg Painting\Contracts\PAINTING\64688\PLA\Neng.dgn		DRAWN -	REVISED -
		CHECKED -	REVISED -
		DATE -	REVISED -

STATE OF ILLINOIS  
DEPARTMENT OF TRANSPORTATION

SCALE: _____	SHEET NO. _____ OF _____ SHEETS	STA. _____ TO STA. _____
--------------	---------------------------------	--------------------------

F.A. RTE.	SECTION	COUNTY	TOTAL SHEETS	SHEET NO.
var	D2 Bridge Painting 2011-2	various	25	12
			CONTRACT NO. 64G88	
ILLINOIS FED. AID PROJECT				