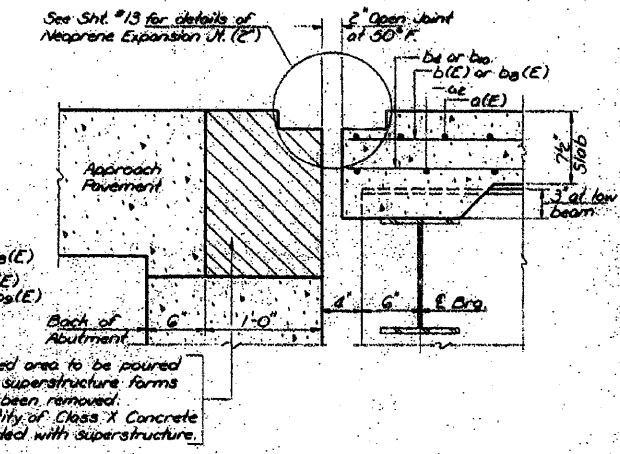
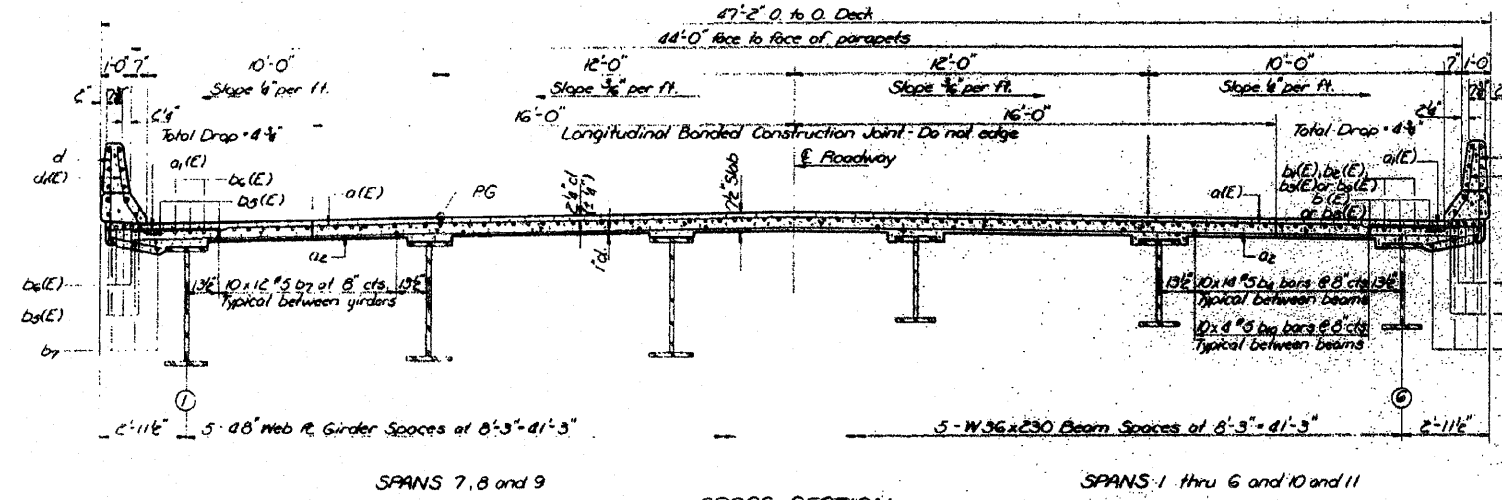


STATE OF ILLINOIS
DEPARTMENT OF TRANSPORTATION

DATE	NO.	BY	REVISION	SHEET NO. 12
11-20-11	089-0042	STEPHENSON	48	11
33 SHEETS				

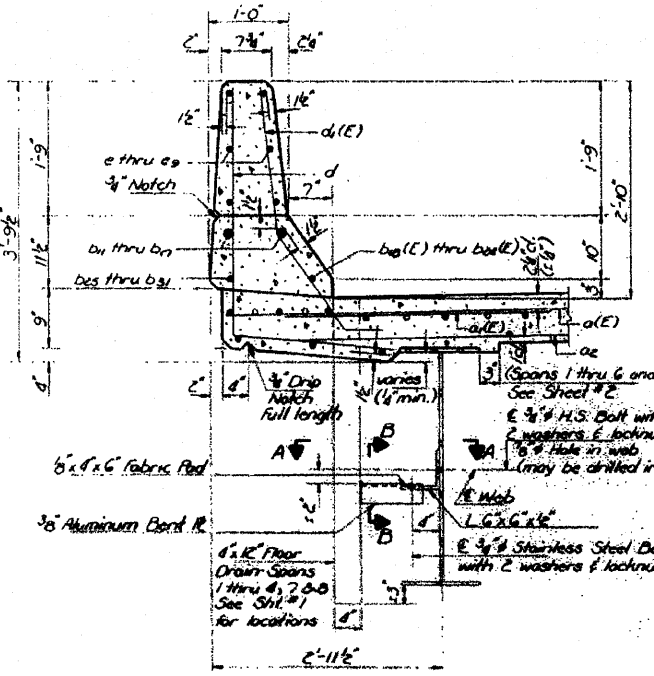


BILL OF MATERIAL

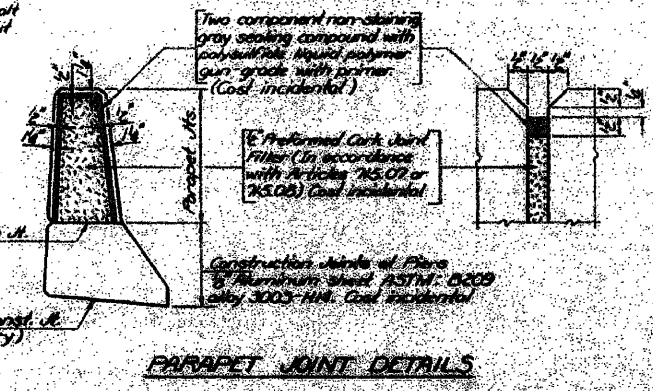
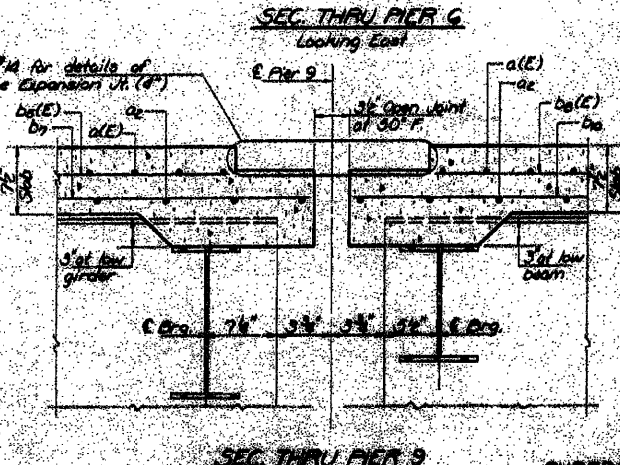
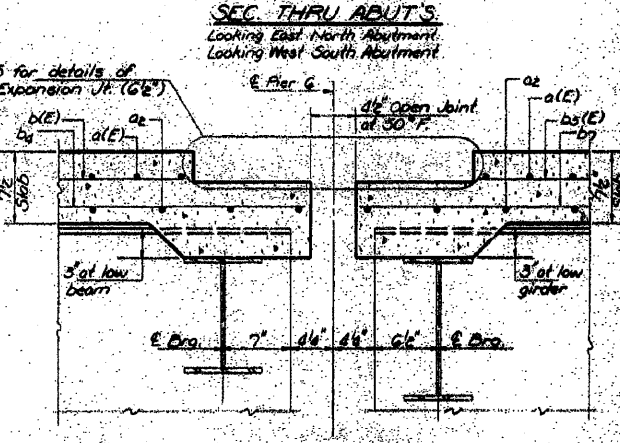
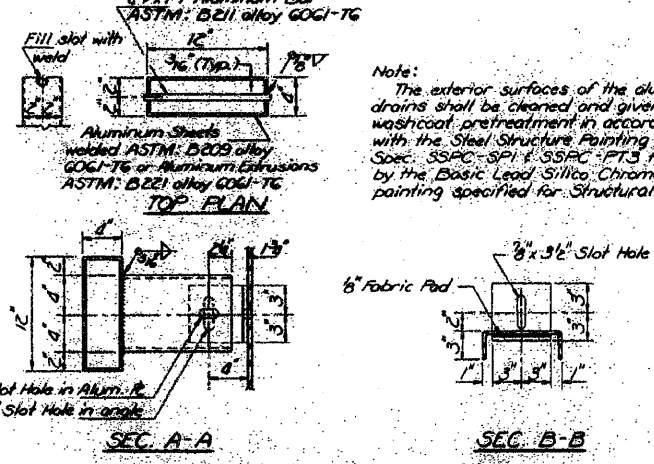
Bar	No.	Size	Length	Shape	
a(E)	2305	#5	43'-0"		
a(E)	2306	#6	4'-0"		
a2	1611	#5	45'-0"		
b(E)	700	#5	32'-10"		
b(E)	98	#6	26'-2"		
b(E)	98	#6	23'-5"		
b(E)	47	#6	23'-6"		
b2	784	#5	32'-10"		
b(E)	600	#5	37'-3"		
b(E)	188	#6	42'-6"		
b7	672	#5	37'-8"		
b(E)	200	#5	36'-7"		
b(E)	47	#6	26'-2"		
b2	224	#5	36'-7"		
b7	32	#6	31'-6"		
b2	28	#6	10'-3"		
b2	32	#6	29'-7"		
b2	16	#6	10'-6"		
b2	8	#6	8'-9"		
b2	44	#6	26'-4"		
b7	16	#6	22'-8"		
b(E)	16	#5	30'-6"		
b(E)	12	#5	10'-3"		
b(E)	16	#5	28'-1"		
b(E)	8	#5	10'-6"		
b(E)	4	#5	8'-9"		
b(E)	22	#5	27'-7"		
b(E)	8	#5	22'-8"		
b2	16	#5	22'-8"		
b2	12	#5	10'-3"		
b2	16	#5	28'-1"		
b2	8	#5	10'-6"		
b2	4	#5	8'-9"		
b2	22	#5	27'-7"		
b2	8	#5	22'-8"		
d	1802	#4	14'-11"		
d(E)	2038	#5	3'-11"		
d(E)	16	#5	4'-2"		
e	72	#4	8'-7"		
e	72	#4	10'-3"		
e2	72	#4	17'-8"		
e2	48	#4	10'-6"		
e2	72	#4	18'-0"		
e2	48	#4	8'-9"		
e2	36	#4	10'-3"		
e2	44	#4	4'-9"		
e2	72	#4	18'-10"		
e2	72	#4	18'-0"		

Class 1 Concrete (28 Day 2500)
Reinforcement Bars (Round Steel)
Reinforcement Bars (Square Steel)
(Epoxy Coated) Round 20M40

Reinforcement bars designated (E) shall be epoxy coated. See Special Provisions.



CROSS SECTION
Looking South:



DESIGNED	DAU KRULL	DATE	11-20-11
CHECKED	Jim Kamm R.B.	DATE	
DRAWN	by Subhand	DATE	
CHECKED	J.K. R.A.	DATE	

FOR INFORMATION ONLY