

STATE OF ILLINOIS  
 DEPARTMENT OF TRANSPORTATION  
 DIVISION OF HIGHWAYS

**PROPOSED  
 HIGHWAY PLANS**

FAP ROUTE 75 (IL 29)  
 SECTION 1N

MEDIAN REMOVAL  
 CHRISTIAN COUNTY

C-96-050-11

F.A.P. RTE.	SECTION	COUNTY	TOTAL SHEETS	SHEET NO.
75	1N	CHRISTIAN	4	1
		ILLINOIS	CONTRACT NO. 72E22	

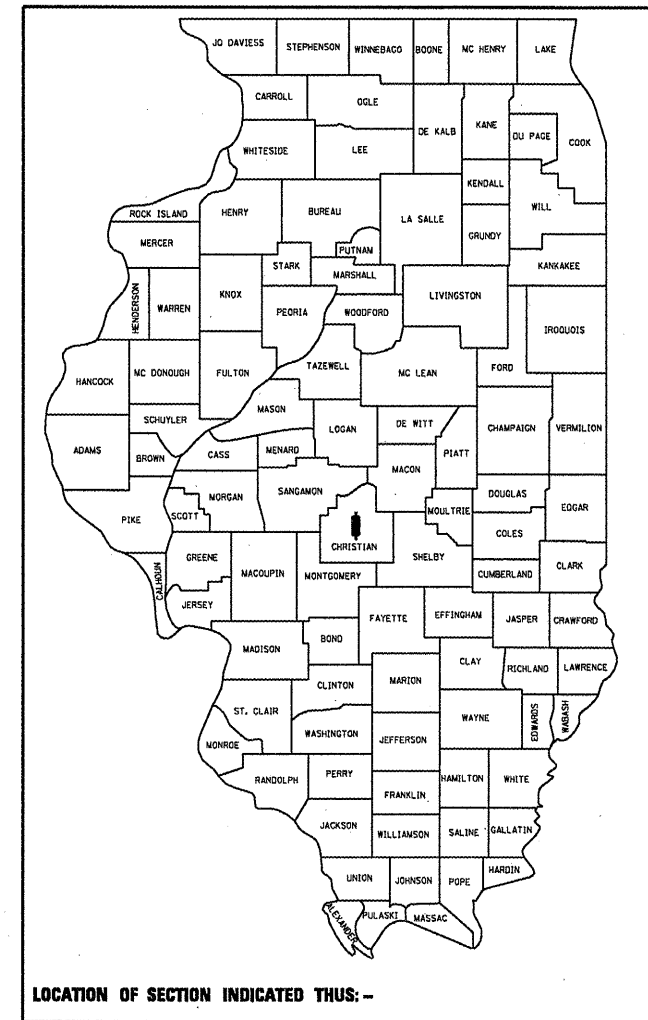
D-96-050-11

**FOR INDEX OF SHEETS**

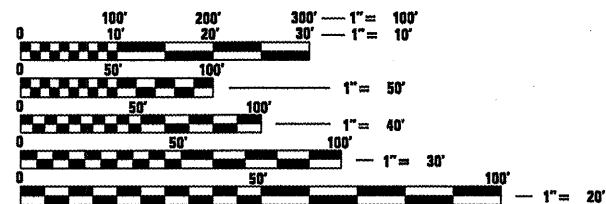
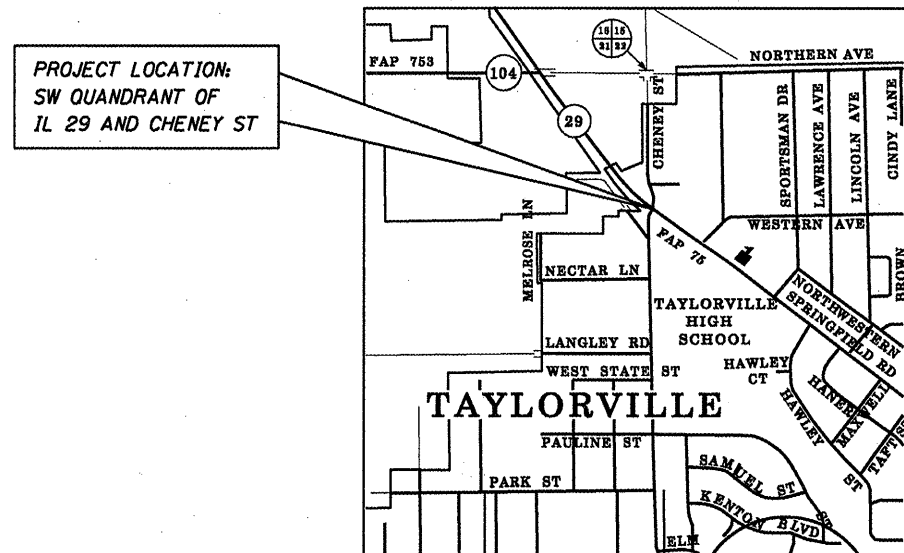
1. COVER SHEET
2. GENERAL NOTES
3. SUMMARY OF QUANTITIES
4. PLAN SHEET

**HIGHWAY STANDARDS**

000001-06  
 701701-07  
 780001-02



ADT = 16,000 (2009)  
 TRUCKS = 7.2%



FULL SIZE PLANS HAVE BEEN PREPARED USING STANDARD ENGINEERING SCALES. REDUCED SIZED PLANS WILL NOT CONFORM TO STANDARD SCALES. IN MAKING MEASUREMENTS ON REDUCED PLANS, THE ABOVE SCALES MAY BE USED.

J.U.L.I.E.  
 JOINT UTILITY LOCATION INFORMATION FOR EXCAVATION  
 1-800-892-0123  
 OR 811

PROJECT ENGINEER: JEFF MYERS (217)782-4761  
 TEAM MANAGER: TOM COX (217)524-7940

GROSS LENGTH = 0.00 FT. = 0.00 MILE  
 NET LENGTH = 0.00 FT. = 0.00 MILE

CONTRACT NO. 72E22

STATE OF ILLINOIS  
 DEPARTMENT OF TRANSPORTATION  
 DIVISION OF HIGHWAYS

SUBMITTED *February 10 20 11*  
*Rose Z. Omick*  
 DEPUTY DIRECTOR OF HIGHWAYS, REGION ENGINEER

*March 4 20 11*  
*Scott E. Stitt P.E.*  
 ACTING ENGINEER OF DESIGN AND ENVIRONMENT

*March 4 20 11*  
*Christine M. Reed*  
 DIRECTOR OF HIGHWAYS, CHIEF ENGINEER

**PRINTED BY THE AUTHORITY  
 OF THE STATE OF ILLINOIS**

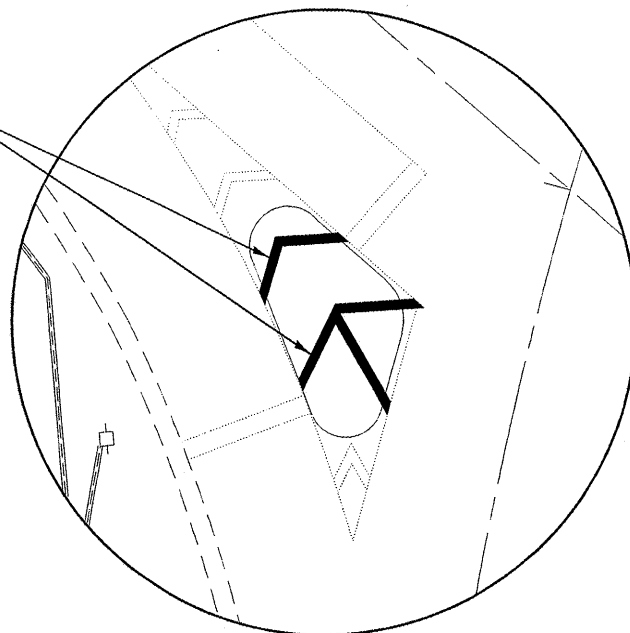


SUMMARY OF QUANTITIES				SW QUADRANT IL 29 AND CHENEY ST INTERSECTION 100% STATE
CODE NO.	PAY ITEM	UNIT	TOTAL QUANTITIES	CONSTRUCTION TYPE CODE 0004
31101000	SUBBASE GRANULAR MATERIAL, TYPE B	TON	10	10
35300700	PORTLAND CEMENT CONCRETE BASE COURSE 12"	SQ YD	29	29
44000500	COMBINATION CURB AND GUTTER REMOVAL	FOOT	52	52
59300100	CONTROLLED LOW-STRENGTH MATERIAL	CU YD	1	1
67100100	MOBILIZATION	L SUM	1	1
70102635	TRAFFIC CONTROL AND PROTECTION, STANDARD 701701	L SUM	1	1
70103815	TRAFFIC CONTROL SURVEILLANCE	CAL DA	3	3
73700200	REMOVE CONCRETE FOUNDATION - GROUND MOUNT	EACH	1	1
89502380	REMOVE EXISTING HANDHOLE	EACH	1	1
X4402020	CONCRETE MEDIAN SURFACE REMOVAL	SQ FT	99	99
* X7800650	URETHANE PAVEMENT MARKING - LINE 12"	FOOT	37	37

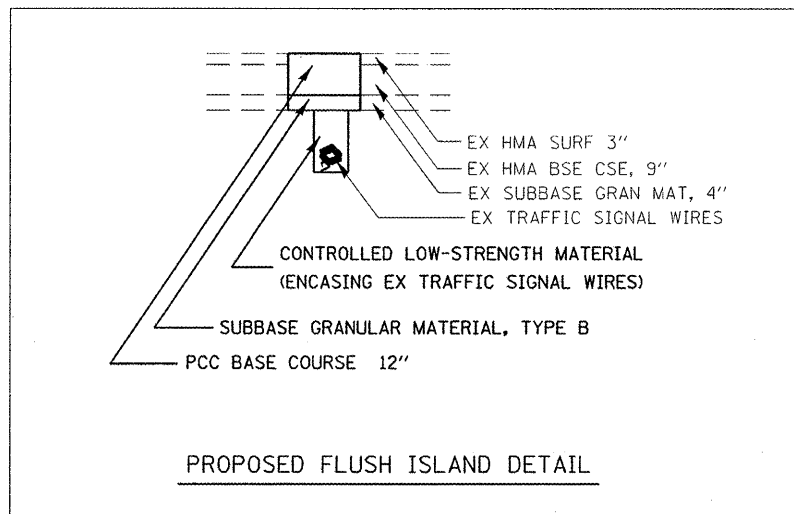
\* SPECIALTY ITEM

URETHANE PAVEMENT MARKING - LINE 12"

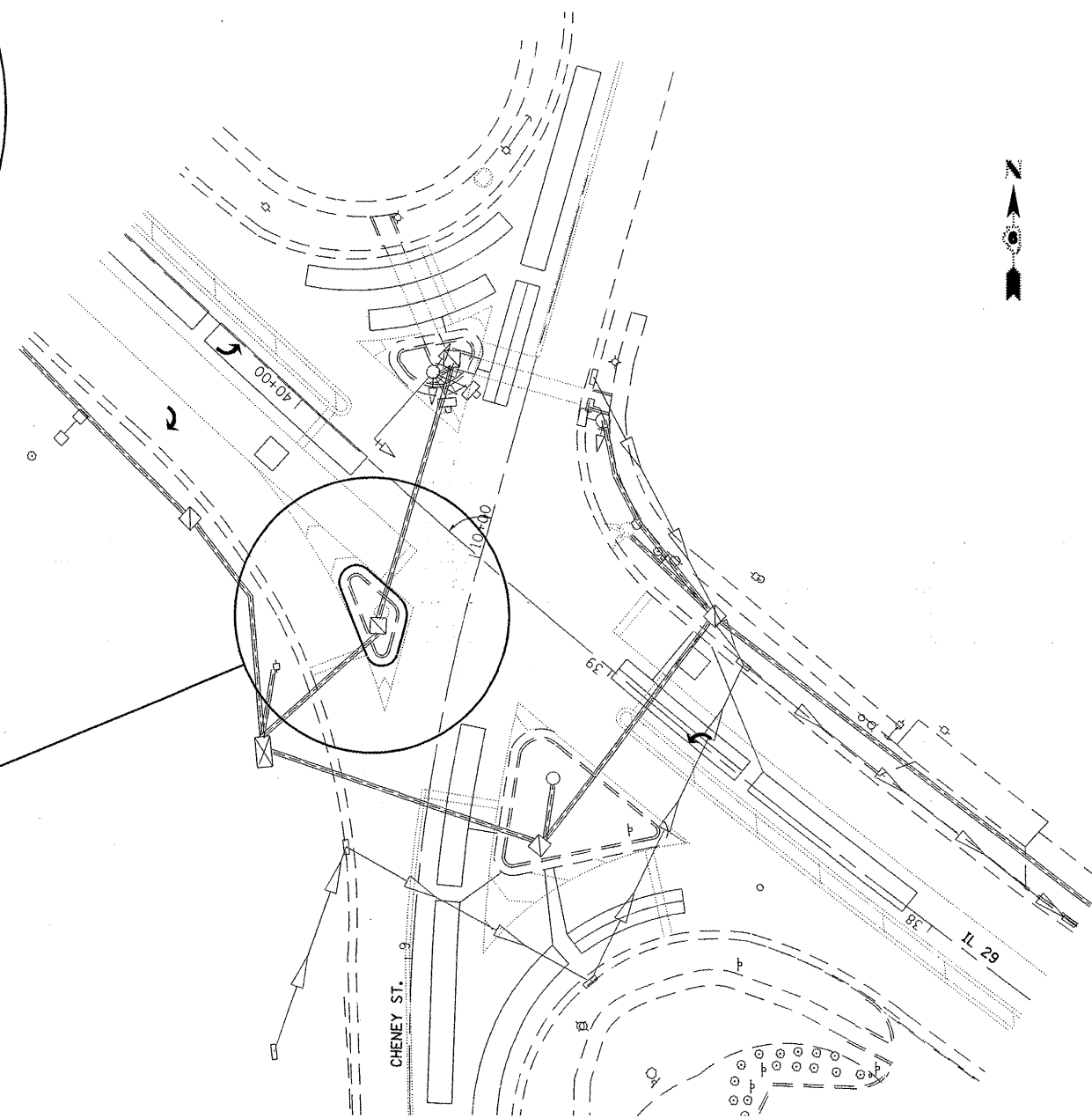
NOTE:  
EVENLY SPACE STRIPES BETWEEN  
EXISTING PAVEMENT MARKINGS



STRIPING DETAIL



PROPOSED FLUSH ISLAND DETAIL



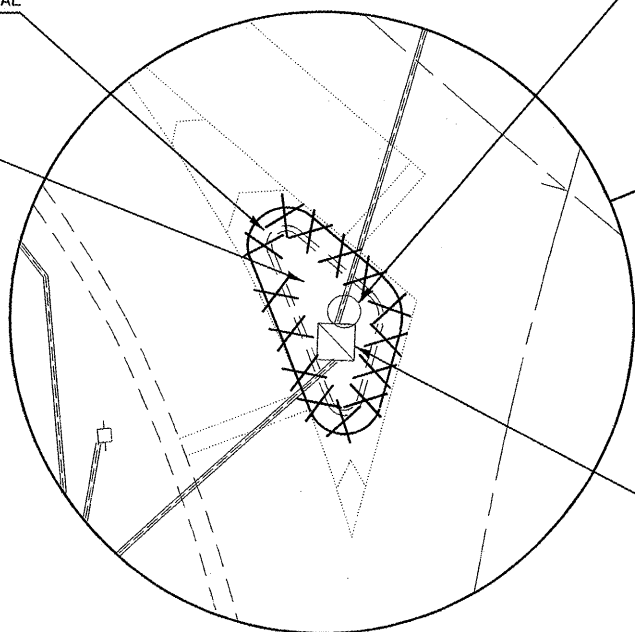
INTERSECTION OF  
IL 29 & CHENEY ST

COMBINATION CURB AND GUTTER REMOVAL

CONCRETE MEDIAN SURFACE REMOVAL

REMOVE CONCRETE FOUNDATION  
- GROUND MOUNT

REMOVE EXISTING HANDHOLE



ISLAND REMOVAL

FILE NAME =  
c:\pwwork\pwwork\caxte\0253119\0672E2

USER NAME = caxte  
-shtrplan.dgn  
PLOT SCALE = 48.0000' / IN.  
PLOT DATE = Feb-10-2011 04:33:40PM

DESIGNED -  
DRAWN -  
CHECKED -  
DATE -

REVISED -  
REVISED -  
REVISED -  
REVISED -

STATE OF ILLINOIS  
DEPARTMENT OF TRANSPORTATION

PLAN SHEET

SCALE: 1" = 20' SHEET NO. OF SHEETS STA. TO STA.

F.A.P. RTE.	SECTION	COUNTY	TOTAL SHEETS	SHEET NO.
75	IN	CHRISTIAN	4	4
CONTRACT NO. 72E22				
ILLINOIS FED. AID PROJECT				