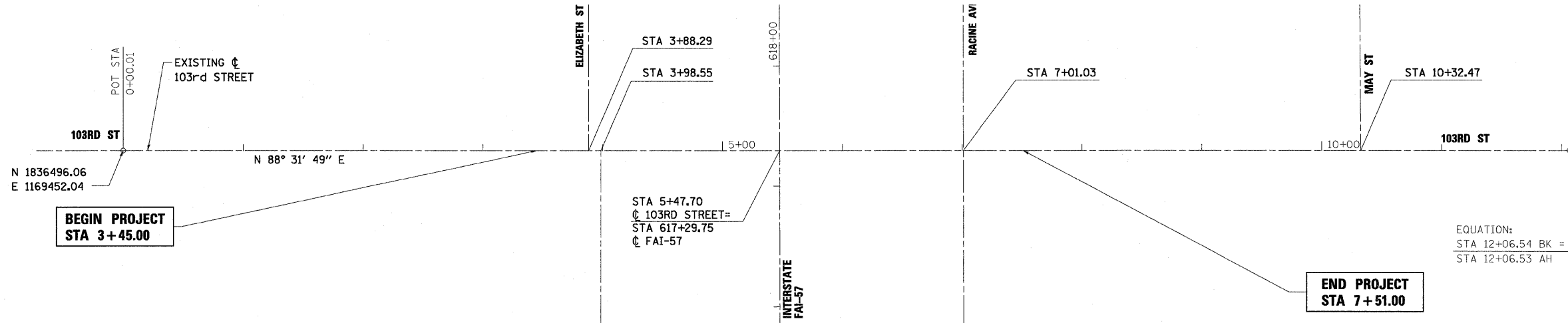
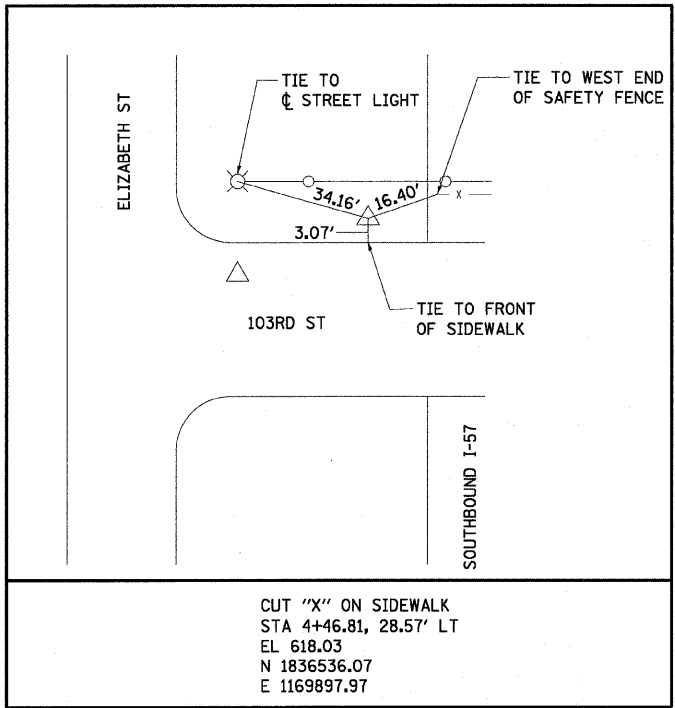


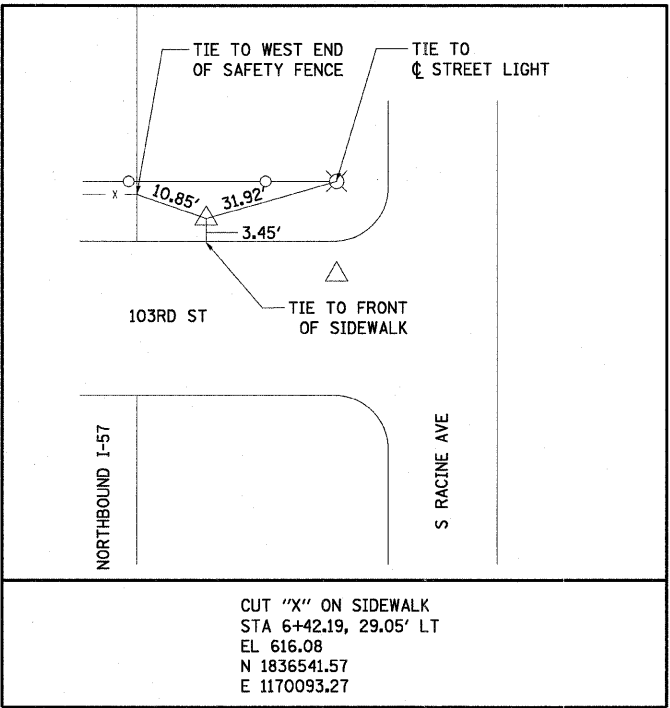
F.A.I. RTE.	SECTION	COUNTY	TOTAL SHEETS	SHEET NO.
57	2122-B	COOK	75	10
STA.		TO STA.		
FED. ROAD DIST. NO.	ILLINOIS	FED. AID PROJECT		



EQUATION:  
 STA 12+06.54 BK =  
 STA 12+06.53 AH



CUT "X" ON SIDEWALK  
 STA 4+46.81, 28.57' LT  
 EL 618.03  
 N 1836536.07  
 E 1169897.97



CUT "X" ON SIDEWALK  
 STA 6+42.19, 29.05' LT  
 EL 616.08  
 N 1836541.57  
 E 1170093.27

**BENCHMARKS**

SOUTH WEST BOLT ON FIRE HYDRANT  
 AT NORTHWEST CORNER OF  
 RACINE AVENUE AND 103RD STREET  
 ELEVATION = 622.72

REVISIONS	
NAME	DATE

ILLINOIS DEPARTMENT OF TRANSPORTATION

**ALIGNMENT, TIES, AND BENCHMARKS  
 103RD STREET**

SCALE: 1"=50'  
 DATE: 15-JAN-2009

DRAWN BY: T.W.K.  
 CHECKED BY: A.A.C.