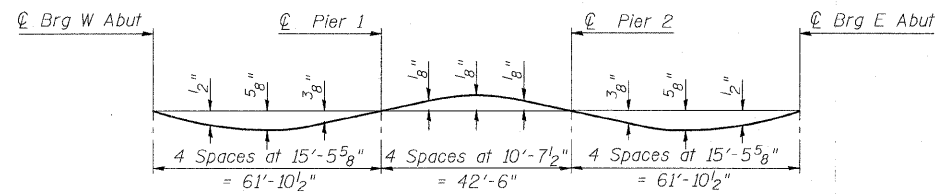


STATE OF ILLINOIS
DEPARTMENT OF TRANSPORTATION

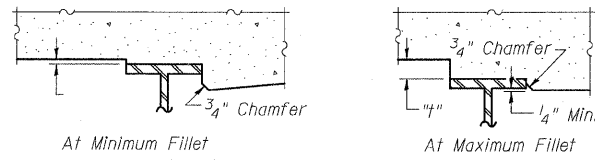
ROUTE NO.	SECTION	COUNTY	SHEET	SHEET NO.
F.A.I. 57	★	COOK	75 32	32 SHEETS
FED. ROAD DIST. NO. 7		ILLINOIS	FED. AID PROJECT-	
Contract 60366				
★ 2122B				



DEAD LOAD DEFLECTION DIAGRAM
(Includes weight of deck, sidewalks and parapets.)

Notes:

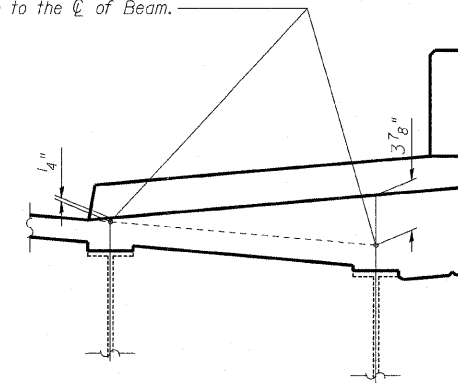
The above deflections are not to be used in the field if the engineer is working from the "Theoretical Grade Elevations Adjusted for Dead Load Deflection" as shown in the tables on Sheets 4 through 6 of 32.



FILLET HEIGHTS

To determine "t": After all structural steel has been erected, elevations of the top flanges of the beams shall be taken at intervals shown on the plan. These elevations subtracted from the "Theoretical Grade Elevations Adjusted for Dead Load Deflection" shown in the tables on Sheets 4 through 6 of 32, minus the 8" deck thickness, equals the fillet heights "t" above top flange of beams.

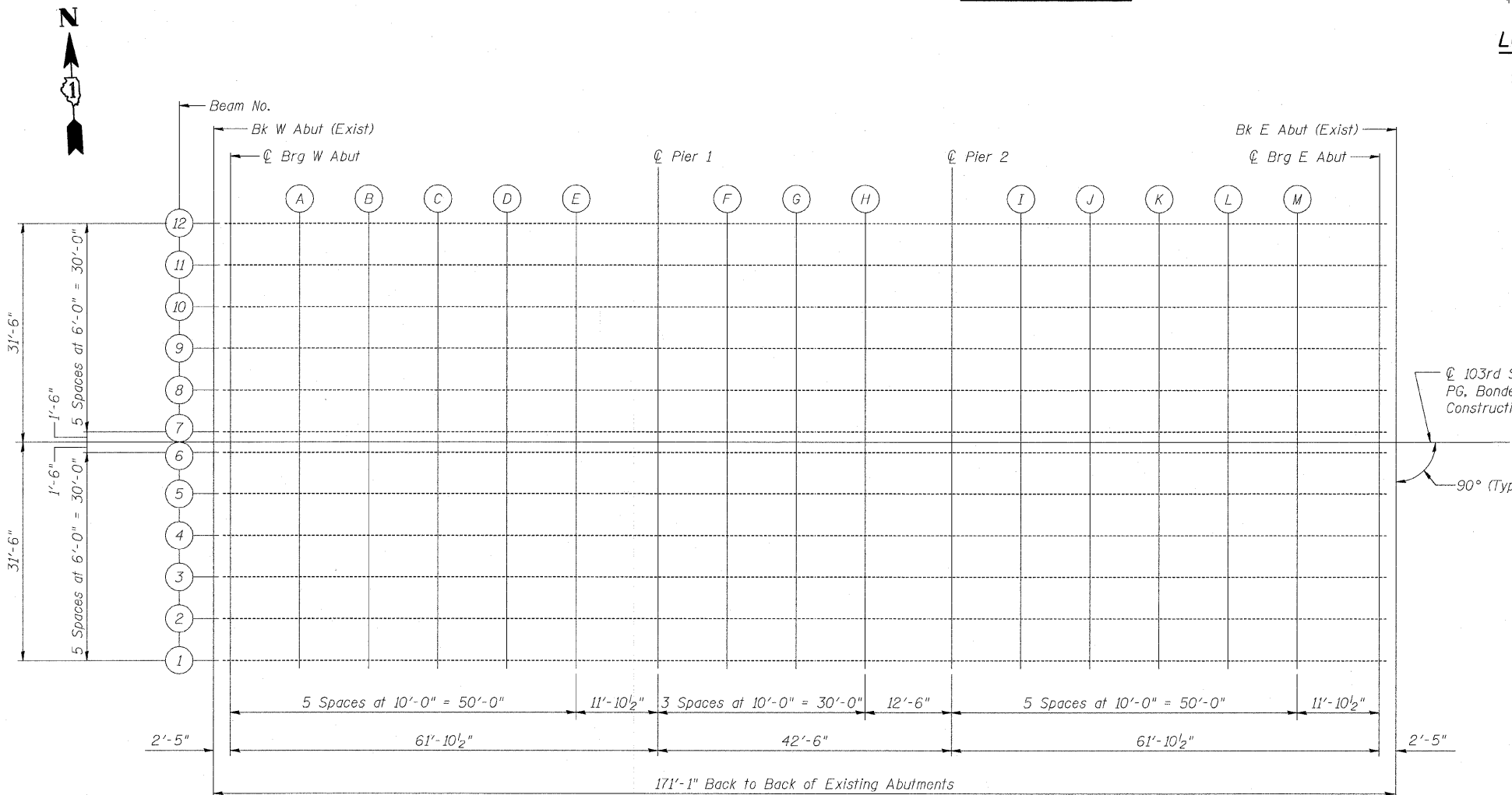
Elevations at Beams 1, 2, 11 and 12 Are Given at the Theoretical Top of Slab, Which is the Projection of the Roadway Slab Template to the ϕ of Beam.



LOCATION OF ELEVATIONS AT BEAMS 1, 2, 11 & 12

BEAM 1

Location	Station	Offset	Theoretical Grade Elevations	Theoretical Grade Elevations Adjusted For Dead Load Deflection
Bk W Abut (Exist)	4+61.858	31.500	616.947	616.947
ϕ Brg W Abut	4+64.275	31.500	616.934	616.934
A	4+74.275	31.500	616.876	616.904
B	4+84.275	31.500	616.822	616.869
C	4+94.275	31.500	616.768	616.820
D	5+04.275	31.500	616.714	616.757
E	5+14.275	31.500	616.662	616.686
ϕ Pier 1	5+26.150	31.500	616.582	616.582
F	5+36.150	31.500	616.504	616.495
G	5+46.150	31.500	616.418	616.406
H	5+56.150	31.500	616.322	616.311
ϕ Pier 2	5+68.650	31.500	616.190	616.190
I	5+78.650	31.500	616.074	616.094
J	5+88.650	31.500	615.949	615.989
K	5+98.650	31.500	615.815	615.867
L	6+08.650	31.500	615.673	615.722
M	6+18.650	31.500	615.520	615.552
ϕ Brg E Abut	6+30.525	31.500	615.340	615.340
Bk E Abut (Exist)	6+32.942	31.500	615.306	615.306



PLAN

ϕ 103rd Street, PG, Bonded Stage Construction Joint
90° (Typ)

DESIGNED	NDR
CHECKED	DSE
DRAWN	RTT
CHECKED	DSE
DATE	JAN 16, 2009

Illinois Firm Registration No: 04-00533

 Stanley Consultants Inc.
 850 West Higgins Road, Suite 730, Chicago, Illinois 60631-2801
 www.stanleygrp.com

TOP OF DECK SLAB ELEVATIONS
103RD STREET OVER
FAI 57 (DAN RYAN-WEST LEG)
FAI RTE 57 SECTION 2122B
COOK COUNTY
STA 5+47.40
STRUCTURE NO 016-2127

C:\J560\02-103\sh\sb\00204.dgn 15-JAN-2009