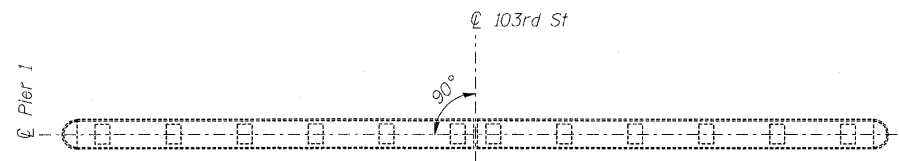
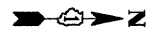


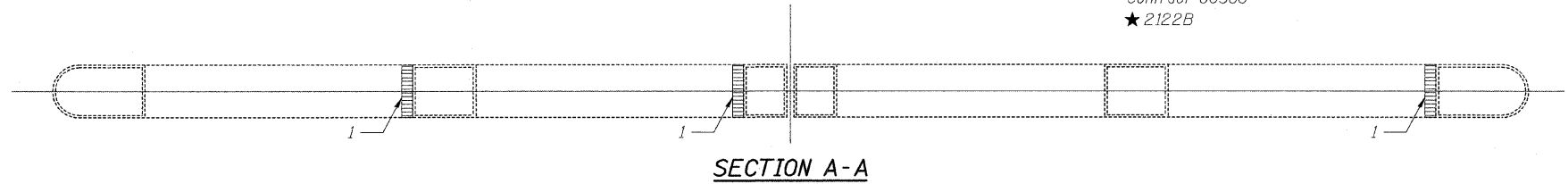
STATE OF ILLINOIS
DEPARTMENT OF TRANSPORTATION

ROUTE NO.	SECTION	COUNTY	TOTAL SHEETS	SHEET NO.	SHEET NO. 28
F.A.I. 57	★	COOK	75	54	32 SHEETS
FED. ROAD DIST. NO. 7	ILLINOIS	FED. AID PROJECT-			

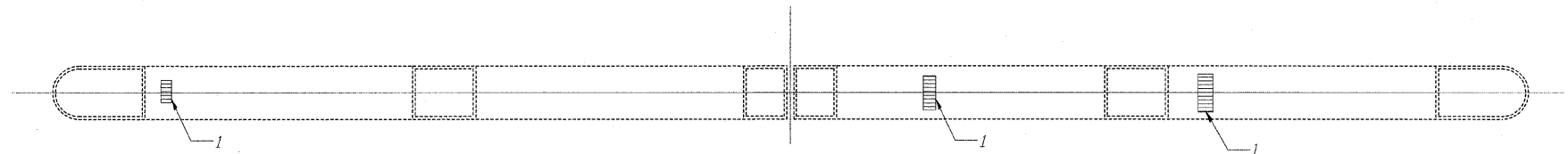
Contract 60366
★ 2122B



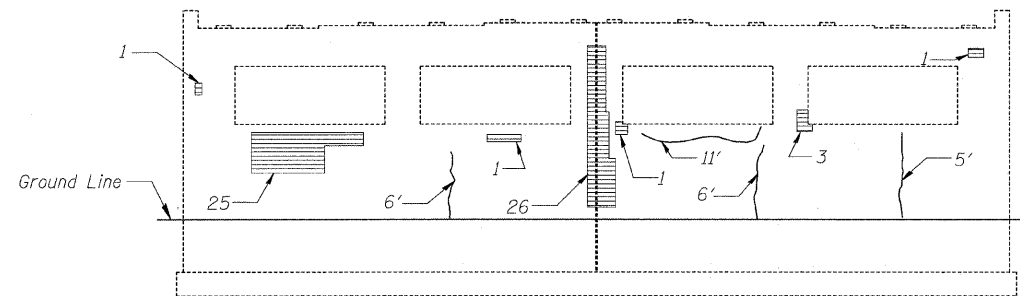
TOP VIEW



SECTION A-A

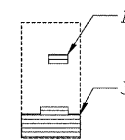


SECTION B-B

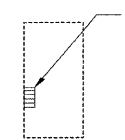


EAST ELEVATION

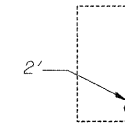
(Looking West)



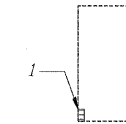
SECTION C-C



SECTION D-D



SECTION E-E



SECTION F-F

Notes:

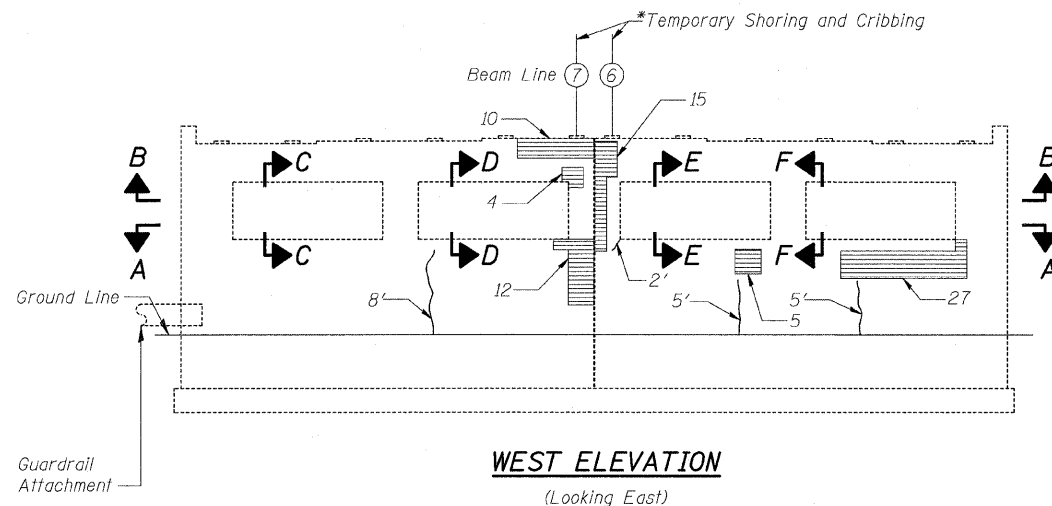
1. Repair of the existing Pier shall include but not be limited to the areas shown. The actual areas to be repaired will be determined by the Engineer at the time of construction.
 2. All Areas are in Square Feet.
 3. All Crack Lengths are in Feet.
- * Temporary Shoring and Cribbing is anticipated at Beam Lines 6 and 7 as shown to support beams during substructure repairs.

Legend

- ▨ Indicates Limits of Structural Repair of Concrete
- 2' Indicates Length of Epoxy Crack Injection

BILL OF MATERIAL

ITEM	UNIT	QUANTITY
Epoxy Crack Injection	Foot	50
Structural Repair of Concrete (Depth Greater than 5")	Sq Ft	14
Structural Repair of Concrete (Depth Equal to or Less than 5")	Sq Ft	129
Temporary Shoring and Cribbing	Each	2



WEST ELEVATION

(Looking East)

DESIGNED	NDR
CHECKED	DSE
DRAWN	RD
CHECKED	DSE
DATE	JAN 16, 2009

Illinois Firm Registration No. 04-00533

Stanley Consultants Inc.
850 West Higgins Road, Suite 730, Chicago, Illinois 60631-2801
www.stanleygroup.com

PIER 1 REPAIRS
103RD STREET OVER
FAI 57 (DAN RYAN-WEST LEG)
FAI RTE 57 SECTION 2122B
COOK COUNTY
STA 5+47.40
STRUCTURE NO 016-2127