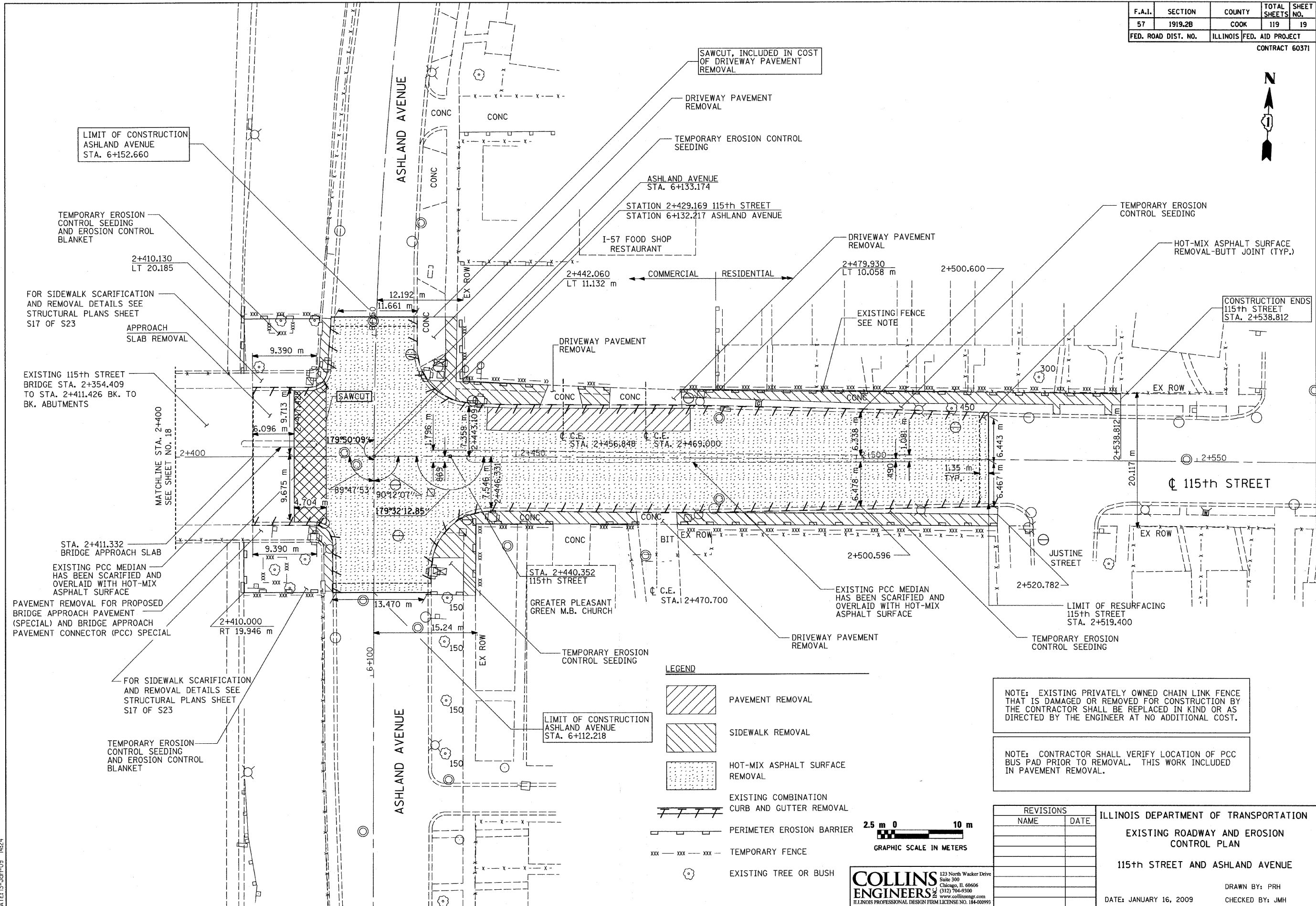


F.A.I.	SECTION	COUNTY	TOTAL SHEETS	SHEET NO.
57	1919.2B	COOK	119	19
FED. ROAD DIST. NO.		ILLINOIS FED. AID PROJECT		
CONTRACT 60371				



LIMIT OF CONSTRUCTION  
ASHLAND AVENUE  
STA. 6+152.660

TEMPORARY EROSION  
CONTROL SEEDING  
AND EROSION CONTROL  
BLANKET

FOR SIDEWALK SCARIFICATION  
AND REMOVAL DETAILS SEE  
STRUCTURAL PLANS SHEET  
S17 OF S23

EXISTING 115th STREET  
BRIDGE STA. 2+354.409  
TO STA. 2+411.426 BK. TO  
BK. ABUTMENTS

EXISTING PCC MEDIAN  
HAS BEEN SCARIFIED AND  
OVERLAID WITH HOT-MIX  
ASPHALT SURFACE

PAVEMENT REMOVAL FOR PROPOSED  
BRIDGE APPROACH PAVEMENT  
(SPECIAL) AND BRIDGE APPROACH  
PAVEMENT CONNECTOR (PCC) SPECIAL

FOR SIDEWALK SCARIFICATION  
AND REMOVAL DETAILS SEE  
STRUCTURAL PLANS SHEET  
S17 OF S23

TEMPORARY EROSION  
CONTROL SEEDING  
AND EROSION CONTROL  
BLANKET

SAWCUT, INCLUDED IN COST  
OF DRIVEWAY PAVEMENT  
REMOVAL

DRIVEWAY PAVEMENT  
REMOVAL

TEMPORARY EROSION CONTROL  
SEEDING

ASHLAND AVENUE  
STA. 6+133.174

STATION 2+429.169 115th STREET  
STATION 6+132.217 ASHLAND AVENUE

I-57 FOOD SHOP  
RESTAURANT

2+442.060  
LT 11.132 m

DRIVEWAY PAVEMENT  
REMOVAL

DRIVEWAY PAVEMENT  
REMOVAL

EXISTING FENCE  
SEE NOTE

2+479.930  
LT 10.058 m

2+500.600

2+550

2+520.782

2+500.596

2+520.782

2+519.400

2+538.812

2+511.7

2+519.400

2+519.400

2+519.400

2+519.400

2+519.400

2+519.400

TEMPORARY EROSION  
CONTROL SEEDING

HOT-MIX ASPHALT SURFACE  
REMOVAL-BUTT JOINT (TYP.)

CONSTRUCTION ENDS  
115th STREET  
STA. 2+538.812

EX ROW

EX ROW

EX ROW

EX ROW

EX ROW

EX ROW

EX ROW

EX ROW

EX ROW

EX ROW

EX ROW

EX ROW

EX ROW

EX ROW

EX ROW

EX ROW

MATCHLINE STA. 2+400  
SEE SHEET NO. 18

STA. 2+411.332  
BRIDGE APPROACH SLAB

EXISTING PCC MEDIAN  
HAS BEEN SCARIFIED AND  
OVERLAID WITH HOT-MIX  
ASPHALT SURFACE

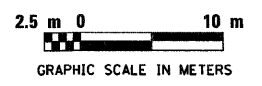
PAVEMENT REMOVAL FOR PROPOSED  
BRIDGE APPROACH PAVEMENT  
(SPECIAL) AND BRIDGE APPROACH  
PAVEMENT CONNECTOR (PCC) SPECIAL

FOR SIDEWALK SCARIFICATION  
AND REMOVAL DETAILS SEE  
STRUCTURAL PLANS SHEET  
S17 OF S23

TEMPORARY EROSION  
CONTROL SEEDING  
AND EROSION CONTROL  
BLANKET

LIMIT OF CONSTRUCTION  
ASHLAND AVENUE  
STA. 6+112.218

- LEGEND**
- PAVEMENT REMOVAL
  - SIDEWALK REMOVAL
  - HOT-MIX ASPHALT SURFACE  
REMOVAL
  - EXISTING COMBINATION  
CURB AND GUTTER REMOVAL
  - PERIMETER EROSION BARRIER
  - TEMPORARY FENCE
  - EXISTING TREE OR BUSH



NOTE: EXISTING PRIVATELY OWNED CHAIN LINK FENCE  
THAT IS DAMAGED OR REMOVED FOR CONSTRUCTION BY  
THE CONTRACTOR SHALL BE REPLACED IN KIND OR AS  
DIRECTED BY THE ENGINEER AT NO ADDITIONAL COST.

NOTE: CONTRACTOR SHALL VERIFY LOCATION OF PCC  
BUS PAD PRIOR TO REMOVAL. THIS WORK INCLUDED  
IN PAVEMENT REMOVAL.

REVISIONS	
NAME	DATE

ILLINOIS DEPARTMENT OF TRANSPORTATION  
EXISTING ROADWAY AND EROSION  
CONTROL PLAN  
115th STREET AND ASHLAND AVENUE  
DRAWN BY: PRH  
CHECKED BY: JMH  
DATE: JANUARY 16, 2009

**COLLINS ENGINEERS**  
123 North Wacker Drive  
Suite 300  
Chicago, IL 60606  
(312) 704-9200  
www.collinsengr.com  
ILLINOIS PROFESSIONAL DESIGN FIRM LICENSE NO. 184-000993

FILE: g:\2904\civil\exhib\290402b.dgn  
 DATE: 15-Jan-09 14:24