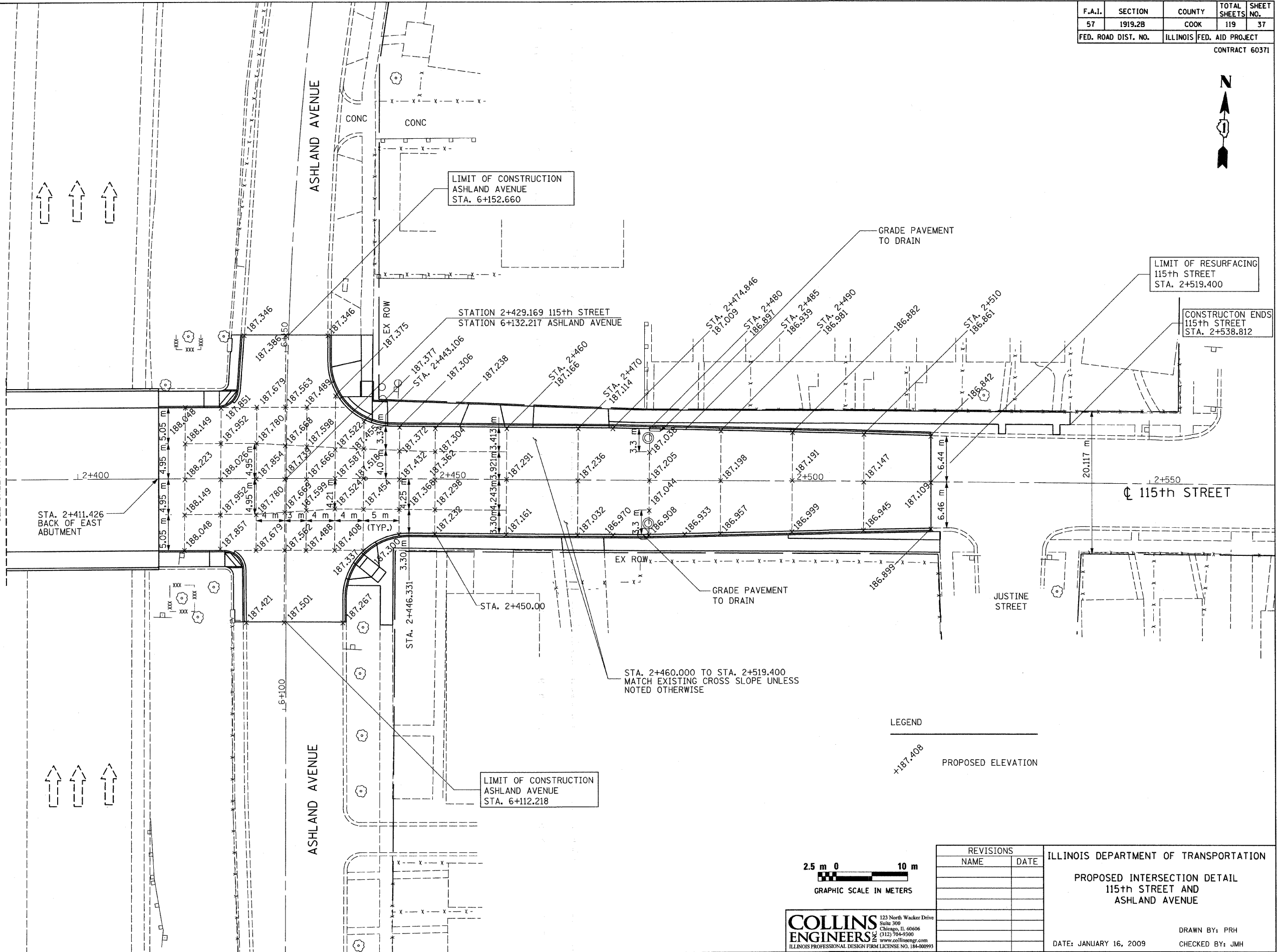


F.A.I.	SECTION	COUNTY	TOTAL SHEETS	SHEET NO.
57	1919.2B	COOK	119	37
FED. ROAD DIST. NO.		ILLINOIS FED. AID PROJECT		

CONTRACT 60371



MATCHLINE STA. 2+390.000
SEE SHEET NO. 36



STA. 2+411.426
BACK OF EAST
ABUTMENT

LIMIT OF CONSTRUCTION
ASHLAND AVENUE
STA. 6+152.660

LIMIT OF RESURFACING
115th STREET
STA. 2+519.400

CONSTRUCTION ENDS
115th STREET
STA. 2+538.812

STATION 2+429.169 115th STREET
STATION 6+132.217 ASHLAND AVENUE

GRADE PAVEMENT
TO DRAIN

GRADE PAVEMENT
TO DRAIN

STA. 2+460.000 TO STA. 2+519.400
MATCH EXISTING CROSS SLOPE UNLESS
NOTED OTHERWISE

LIMIT OF CONSTRUCTION
ASHLAND AVENUE
STA. 6+112.218

LEGEND

+187.408
PROPOSED ELEVATION



REVISIONS	
NAME	DATE

ILLINOIS DEPARTMENT OF TRANSPORTATION
PROPOSED INTERSECTION DETAIL
115th STREET AND
ASHLAND AVENUE

DRAWN BY: PRH
CHECKED BY: JMH

DATE: JANUARY 16, 2009

COLLINS ENGINEERS
123 North Wacker Drive
Suite 300
Chicago, IL 60606
(312) 794-9300
www.collinseng.com
ILLINOIS PROFESSIONAL DESIGN FIRM LICENSE NO. 184-000993

FILE:ep\2904\civil\exhib\2904036.dgn
DATE: 26-Aug-08 14:24