

F.A.I. RTE.	SECTION	COUNTY	TOTAL SHEETS	SHEET NO.
57	1919.2B	COOK	119	69
STA.		TO STA.		
FED. ROAD DIST. NO.		ILLINOIS FED. AID PROJECT		

CONTRACT #60371

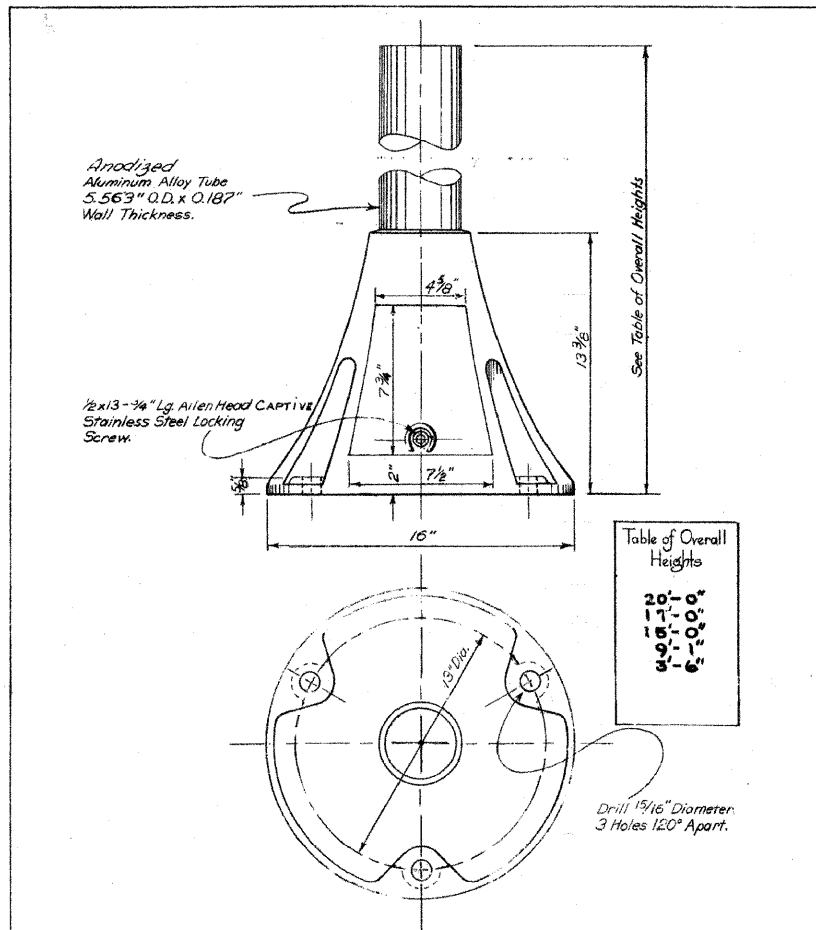
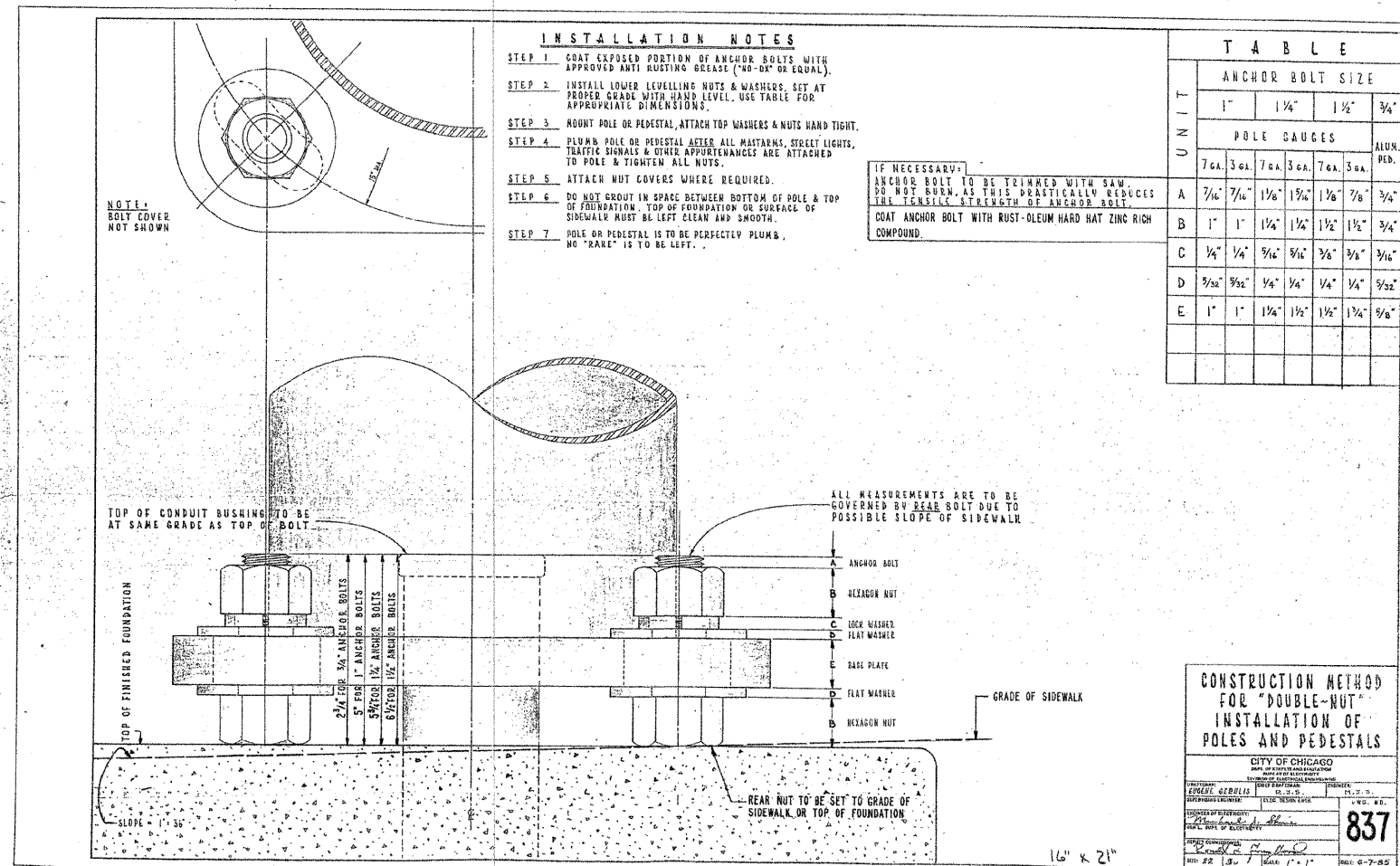


Table of Overall Heights

20'-0"
17'-0"
15'-0"
9'-1"
3'-6"

ALUMINUM PEDESTAL BASE WITH HANDHOLE
for
Street Lighting Controller, Traffic Signal
Controller and Traffic Signal Heads.

REVISED		CITY OF CHICAGO DEPT. OF STREETS AND SANITATION DIVISION OF ELECTRICAL ENGINEERING	
J CHANGED OVERALL HEIGHTS 5-22-84	A 5-5-60	DRAWN R. COLLEY	CHECKED J. BORE
Revised Table of Overall Heights	B 6-30-60	ENGINEER Ruzicka	
Revised O.D. of Pedestal	C 12-21-60	DRG. NO. 526	
Revised Specification Number	D 3-23-62	DATE IN CHARGE	
Revised Table of Overall Heights	E 6-4-64	DATE OF CONSTRUCTION	
Revised Door Dimensions	F 7-14-71	DATE OF COMPLETION	
Revised Overall Heights	G OCT. 26, 73	DATE 4-13-69	
Revised Overall Heights	H 3-4-79	SCALE 1/8" = 1"	



- INSTALLATION NOTES**
- STEP 1 COAT EXPOSED PORTION OF ANCHOR BOLTS WITH APPROVED ANTI RUSTING GREASE ("40-02" OR EQUAL).
 - STEP 2 INSTALL LOWER LEVELLING NUTS & WASHERS. SET AT PROPER GRADE WITH HAND LEVEL. USE TABLE FOR APPROPRIATE DIMENSIONS.
 - STEP 3 MOUNT POLE OR PEDESTAL, ATTACH TOP WASHERS & NUTS HAND TIGHT.
 - STEP 4 PLUMB POLE OR PEDESTAL AFTER ALL MASTARMS, STREET LIGHTS, TRAFFIC SIGNALS & OTHER APPURTENANCES ARE ATTACHED TO POLE & TIGHTEN ALL NUTS.
 - STEP 5 ATTACH NUT COVERS WHERE REQUIRED.
 - STEP 6 DO NOT GROUT IN SPACE BETWEEN BOTTOM OF POLE & TOP OF FOUNDATION. TOP OF FOUNDATION OR SURFACE OF SIDEWALK MUST BE LEFT CLEAN AND SMOOTH.
 - STEP 7 POLE OR PEDESTAL IS TO BE PERFECTLY PLUMB. NO "RAKE" IS TO BE LEFT.

IF NECESSARY - ANCHOR BOLT TO BE TRIMMED WITH SAW. DO NOT BURN, AS THIS PRACTICALLY REDUCES THE TENSILE STRENGTH OF ANCHOR BOLT. COAT ANCHOR BOLT WITH RUST-OLEUM HARD HAT ZINC RICH COMPOUND.

T A B L E

UNIT	ANCHOR BOLT SIZE			
	1"	1 1/4"	1 1/2"	3/4"
POLE GAUGES	7 ea.	3 ea.	7 ea.	3 ea.
	7 ea.	3 ea.	7 ea.	3 ea.
ALUM. PED.	A	7/16"	1 1/8"	1 1/4"
	B	1"	1 1/4"	1 1/2"
C	3/4"	1"	1 1/4"	1 1/2"
D	3/8"	3/4"	1"	1 1/4"
E	1"	1 1/4"	1 1/2"	1 3/4"

CONSTRUCTION METHOD FOR "DOUBLE-NUT" INSTALLATION OF POLES AND PEDESTALS

CITY OF CHICAGO
DEPT. OF STREETS AND SANITATION
DIVISION OF ELECTRICAL ENGINEERING

PROJECT NO.	1919.2B	DATE	4-13-69
DESIGNED BY	R. COLLEY	CHECKED BY	J. BORE
ENGINEER	Ruzicka	DRG. NO.	526
DATE OF CONSTRUCTION		DATE OF COMPLETION	

837

CITY OF CHICAGO BUREAU OF ELECTRICITY
STANDARD DRAWINGS ARE PROVIDED IN ENGLISH
UNITS.

REVISIONS		ILLINOIS DEPARTMENT OF TRANSPORTATION 115TH STREET OVER I-57 CITY OF CHICAGO BUREAU OF ELECTRICITY STANDARD DRAWINGS
NAME	DATE	

SCALE: NONE
DATE: 01-16-09
DRAWN BY: VG
CHECKED BY: PV

SINGH SINGH & ASSOCIATES, INC.
CONSULTING ENGINEERS