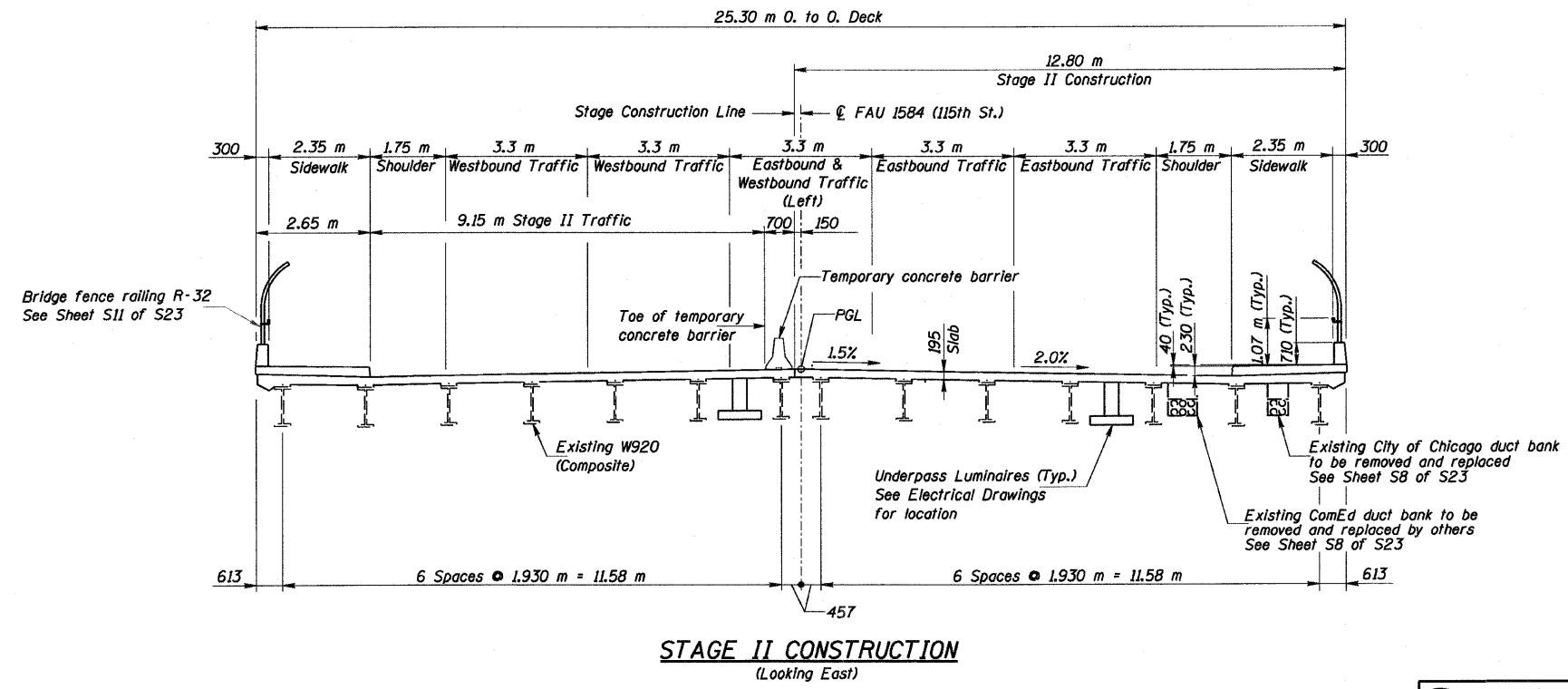
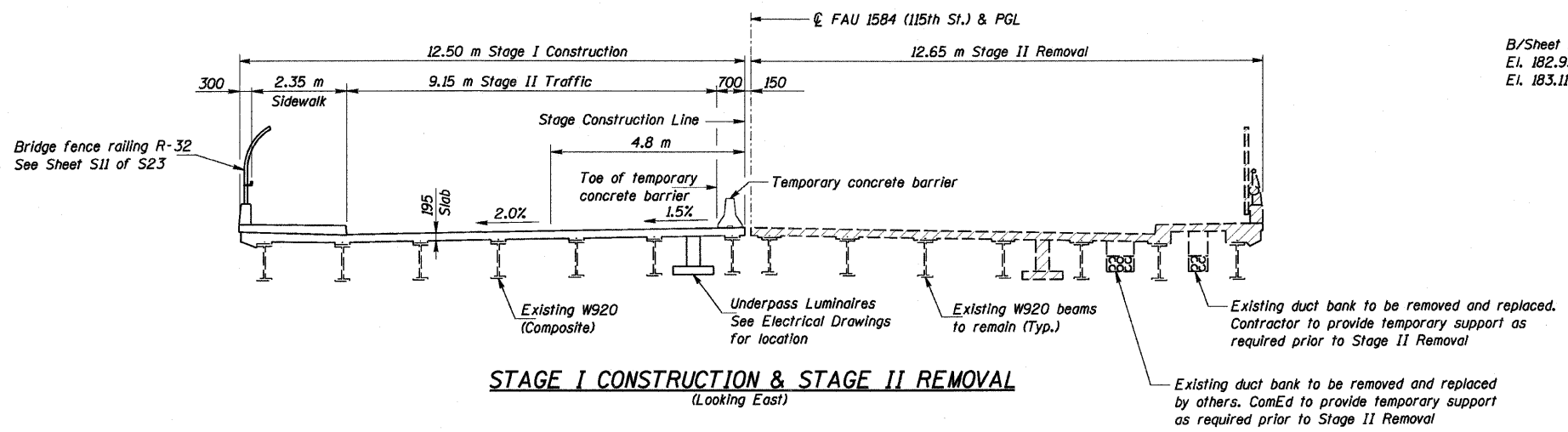
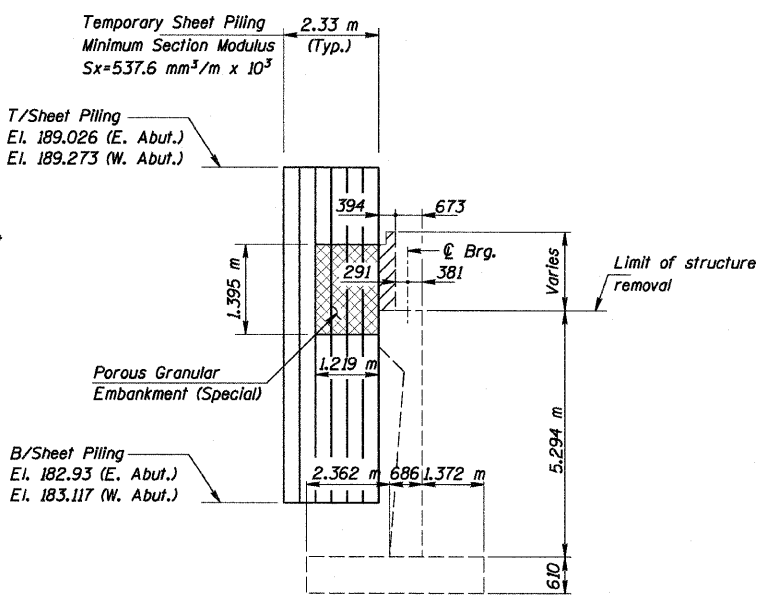
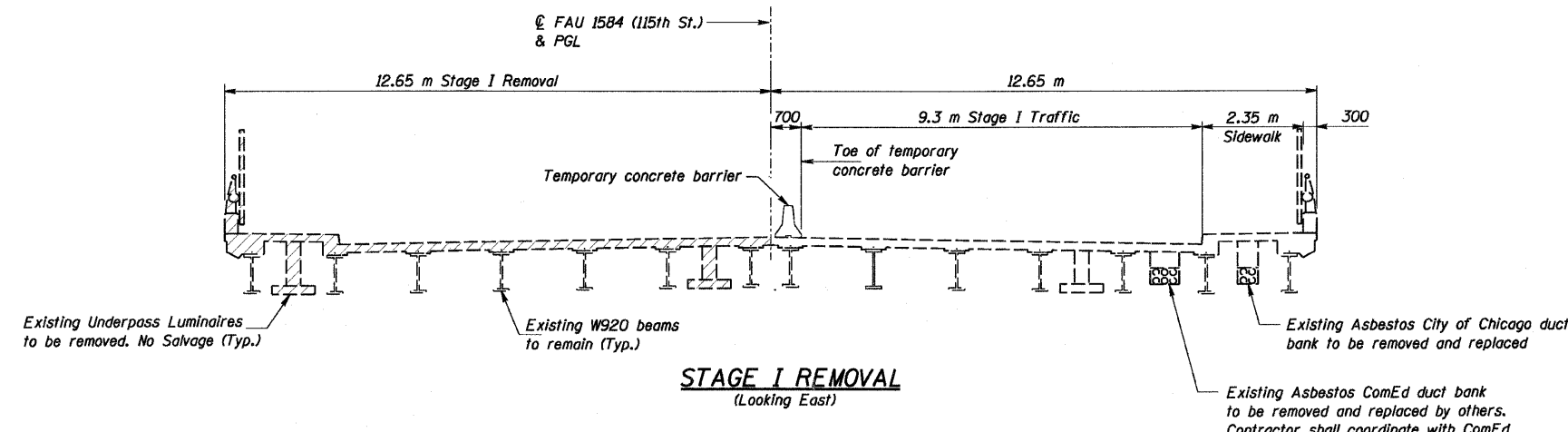


ROUTE NO.	SECTION	COUNTY	TOTAL SHEETS	SHEET NO.
FAU 1584		COOK	119	76
SHEET NO. S3				
S23 SHEETS				
• 068-1919.2-CF CONTRACT 60371				



Notes:

See general notes for more information regarding existing and proposed protective shielding.
 Hatched area indicates removal of Existing Concrete Deck.
 Steel superstructure location to remain the same.
 All dimensions are in millimeters (mm) except as noted.
 For quantity of temporary concrete barrier, see Roadway Plans.
 For details of temporary concrete barrier, see Sheet S22 of S23.

REVISIONS	
NAME	DATE

ILLINOIS DEPARTMENT OF TRANSPORTATION
 115 TH. STREET OVER FAI 57
 FAU RTE. 1584 SEC. 068-1919.2-CF
 COOK COUNTY
 STATION 2+382.915
 STRUCTURE NO. 016-2037

STAGED CONSTRUCTION SECTIONS

DRAWN BY TMC
 CHECKED BY ERB/DGS
 DATE: JANUARY 16, 2009

COLLINS ENGINEERS
 123 North Wacker Drive
 Suite 300
 Chicago, IL 60606
 (312) 704-9300
 www.collinsengr.com
 ILLINOIS PROFESSIONAL DESIGN FIRM LICENSE NO. 184-008993