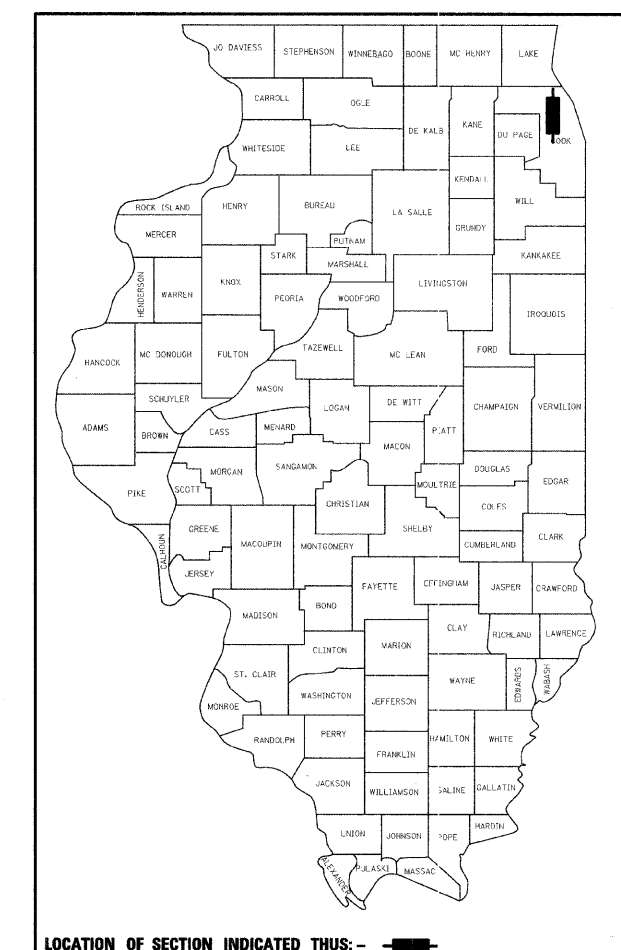


F.A.I. RTE.	SECTION	COUNTY	TOTAL SHEETS	SHEET NO.
90	1414B	COOK	74	1
FED. ROAD DIST. NO.	ILLINOIS			

CONTRACT NO. 60384

D-91-298-97

74+4=78



LOCATION OF SECTION INDICATED THUS: - [shaded rectangle] -

STATE OF ILLINOIS
DEPARTMENT OF TRANSPORTATION
DIVISION OF HIGHWAYS

**PROPOSED
HIGHWAY PLANS**

SAYRE AVENUE OVER F.A.I. ROUTE 90
SUPERSTRUCTURE REPLACEMENT

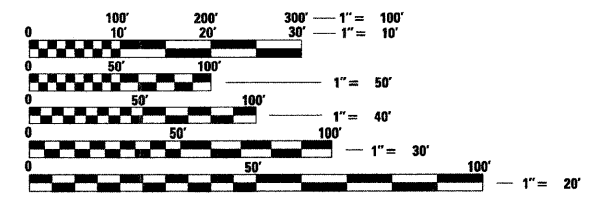
SECTION 1414B
PROJECT NO. :ESP-090-4(117)045
COOK COUNTY
C-91-298-97

FOR INDEX OF SHEETS, SEE SHEET NO.2

PROJECT LOCATED IN THE CITY OF CHICAGO

TRAFFIC DATA
SAYRE AVENUE
ADT = 7,700 (1998)

POSTED SPEED LIMIT:
SAYRE AVENUE = 30 MPH
I-90 = 55 MPH



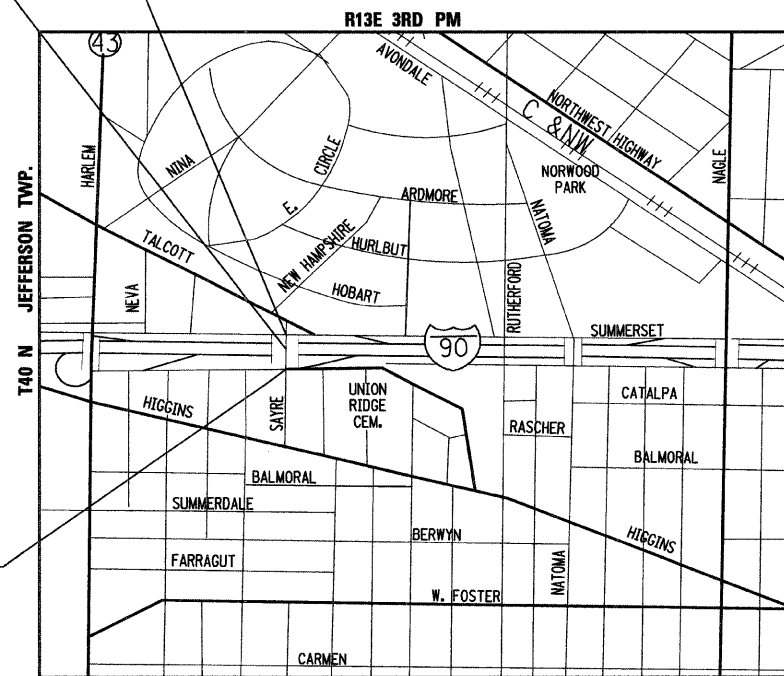
FULL SIZE PLANS HAVE BEEN PREPARED USING STANDARD ENGINEERING SCALES. REDUCED SIZED PLANS WILL NOT CONFORM TO STANDARD SCALES. IN MAKING MEASUREMENTS ON REDUCED PLANS, THE ABOVE SCALES MAY BE USED.

FOR UTILITY INFORMATION CONTACT
CHICAGO UTILITY ALERT NETWORK
312-744-7000

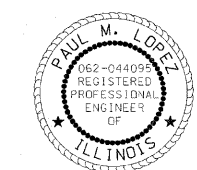
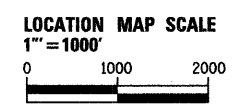
STATION 8+02.48
SN 016-1104
SAYRE AVE. BRIDGE OVER
FAI ROUTE 90
BRIDGE SUPERSTRUCTURE
REPLACEMENT AND
SUBSTRUCTURE REPAIR

END PROJECT
STA. 9+43

BEGIN PROJECT
STA. 6+57



LOCATION MAP
GROSS & NET LENGTH OF PROJECT = 286.00 LF. = 0.054 MILE



EXP 11-30-09

PATRICK ENGINEERING, INC.
PAUL M. LOPEZ, P.E.
062-044095

Paul M. Lopez

DATE: 1-31-08
SIGNATURE AND SEAL APPLY TO DRWG.
NOS. 1-1B



EXP 11-30-08

PATRICK ENGINEERING, INC.
PAUL M. LOPEZ, S.E.
081-005231

Paul M. Lopez

DATE: 1-31-08
SIGNATURE AND SEAL APPLY TO DRWG.
NOS. 30-5B

STATE OF ILLINOIS
DEPARTMENT OF TRANSPORTATION
DIVISION OF HIGHWAYS

SUBMITTED JANUARY 31ST 20 08

Diane M. O'Keefe
DEPUTY DIRECTOR OF HIGHWAYS, REGION ENGINEER

March 13, 20 09
Charles G. Ingersoll
ENGINEER OF DESIGN AND ENVIRONMENT

March 13, 20 09
Christine M. Reed
DIRECTOR OF HIGHWAYS, CHIEF ENGINEER

**PRINTED BY THE AUTHORITY
OF THE STATE OF ILLINOIS**

BUREAU OF DESIGN - CONSULTANT SERVICE PROJECT MANAGER: BRIAN KUTTAB (847) 705-4431

CONTRACT NO. 60384

PATRICK
ENGINEERING INC.
LISLE, ILLINOIS
FAX: (630) 724-1620
TEL: (630) 795-7200