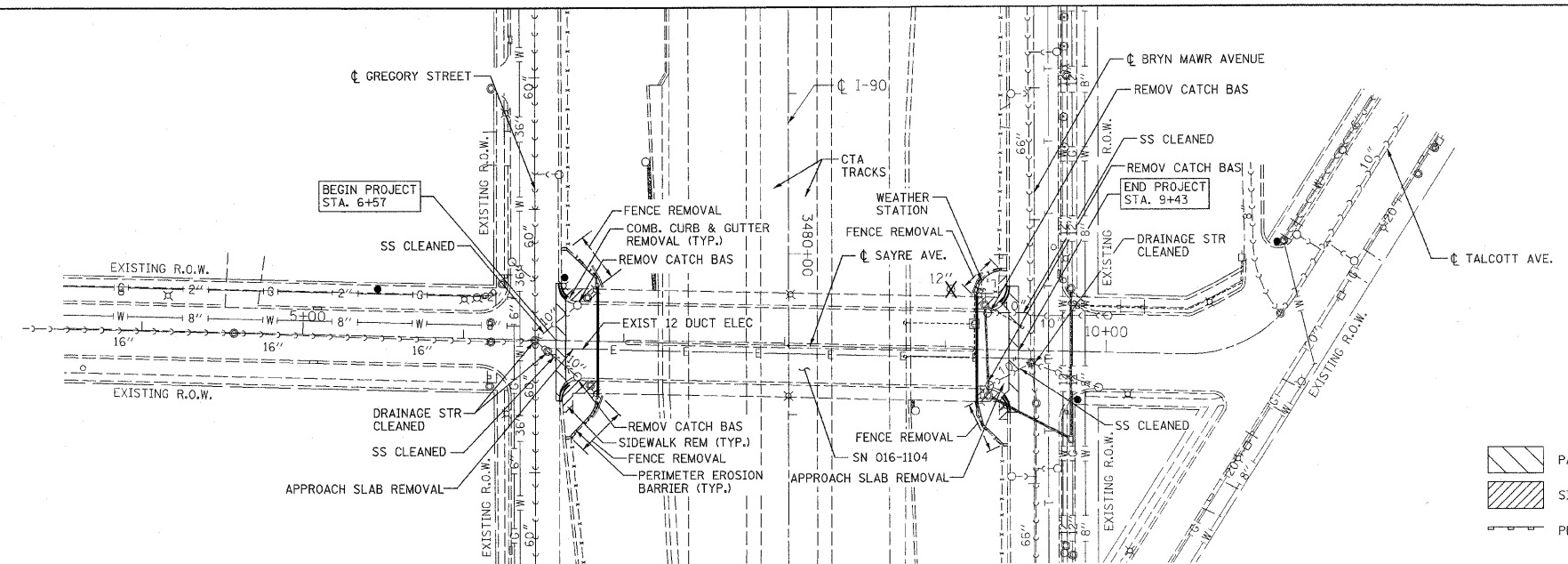
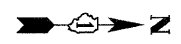
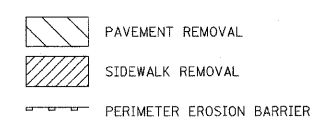


F.A.I. RTE.	SECTION	COUNTY	TOTAL SHEETS	SHEET NO.
90	1414B	COOK	74	6
STA. 6+57		TO STA. 9+43		
FED. ROAD DIST. NO. 7 ILLINOIS FED. AID PROJECT				
CONTRACT NO. 60384				

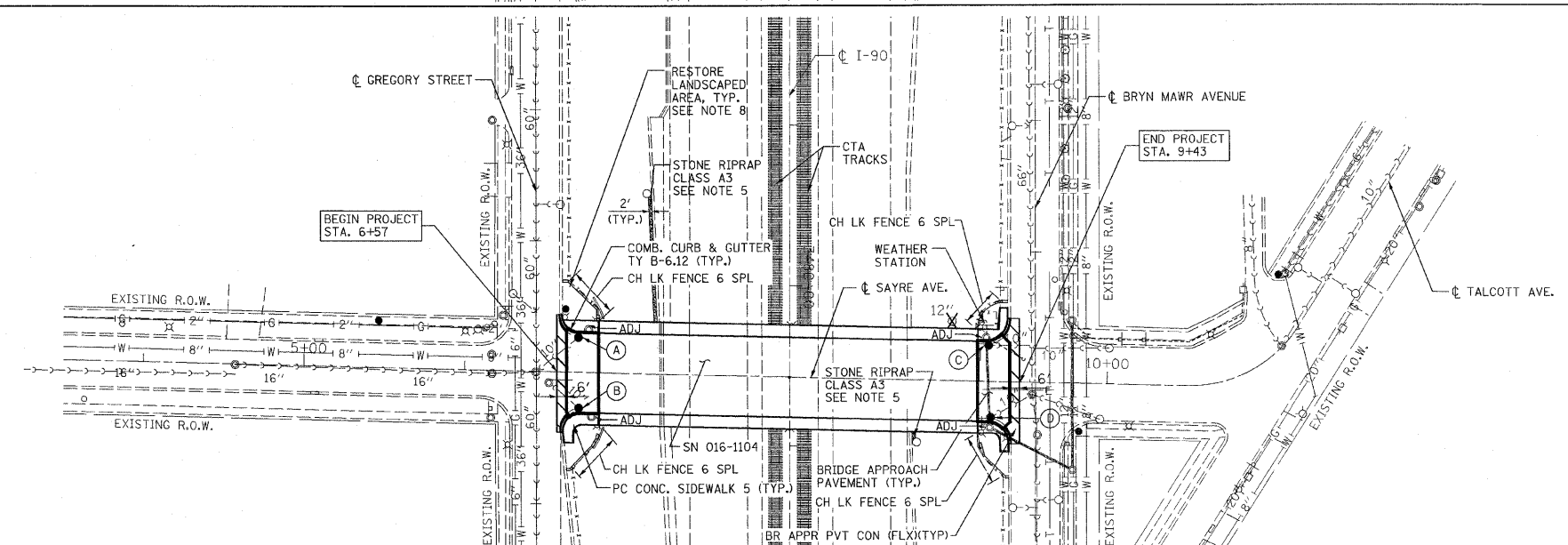


- NOTES:
- FOR LIGHTING REMOVAL SEE LIGHTING PLANS



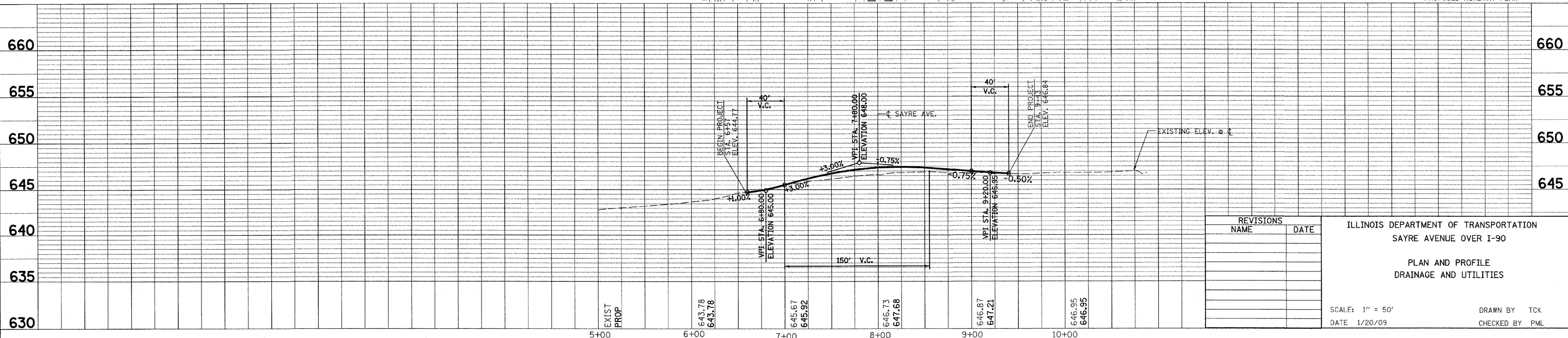
EXISTING ROADWAY PLAN

- (A) STR: CB TA 4D TIF OL (CHGO)
STA/OFF: 6+73.09/24.0' LT
T/F: 644.61
INV: MATCH EXISTING
- (B) STR: CB TA 4D TIF OL (CHGO)
STA/OFF: 6+72.65/24.0' RT
T/F: 644.61
INV: MATCH EXISTING
- (C) STR: CB TA 4D TIF OL (CHGO)
STA/OFF: 9+25.84/24.0' LT
T/F: 646.57
INV: MATCH EXISTING
- (D) STR: CB TA 4D TIF OL (CHGO)
STA/OFF: 9+24.98/24.0' RT
T/F: 646.57
INV: MATCH EXISTING



- NOTES:
- CONSTRUCT PCC SIDEWALK TO MATCH EXISTING AND AS DIRECTED BY THE ENGINEER
 - CONSTRUCT SIDEWALK HANDICAP RAMPS WITH DETECTABLE WARNINGS PER 100T ADA STANDARDS
 - EXTEND STORM SEWERS WITH EXTRA STRENGTH VITRIFIED CLAY PIPE AS REQUIRED TO MEET PROPOSED CATCH BASINS
 - EXISTING SAYRE AVE. PAVEMENT TO BE REMOVED IS COMPRISED OF 10" PCC AND 3" BITUMINOUS MATERIALS
 - STONE RIPRAP WITH FILTER FABRIC SHALL BE PLACED FROM THE EXISTING BRIDGE SLOPEWALL TO THE EXISTING DRAINAGE STRUCTURE AND AS DIRECTED BY THE ENGINEER, THE THICKNESS OF THE RIPRAP WILL BE ONE (1) FOOT.
 - FOR LIGHTING IMPROVEMENTS SEE LIGHTING PLANS
 - CHAIN LINK FENCE 6 SPL SHALL BE CONSTRUCTED IN THE SAME LOCATION AS THE EXISTING FENCE THAT WAS REMOVED AND AS DIRECTED BY THE ENGINEER
 - TOPSOIL AND SODDING, SALT TOLERANT TO BE APPLIED AT EACH BRIDGE QUADRANT

PROPOSED ROADWAY PLAN



REVISIONS	
NAME	DATE

ILLINOIS DEPARTMENT OF TRANSPORTATION
SAYRE AVENUE OVER I-90
PLAN AND PROFILE
DRAINAGE AND UTILITIES

SCALE: 1" = 50'
DATE 1/20/09
DRAWN BY TCK
CHECKED BY PML



I:\17_80\Drawings\RDWY\shs\rd\vs_Pln_01.dgn