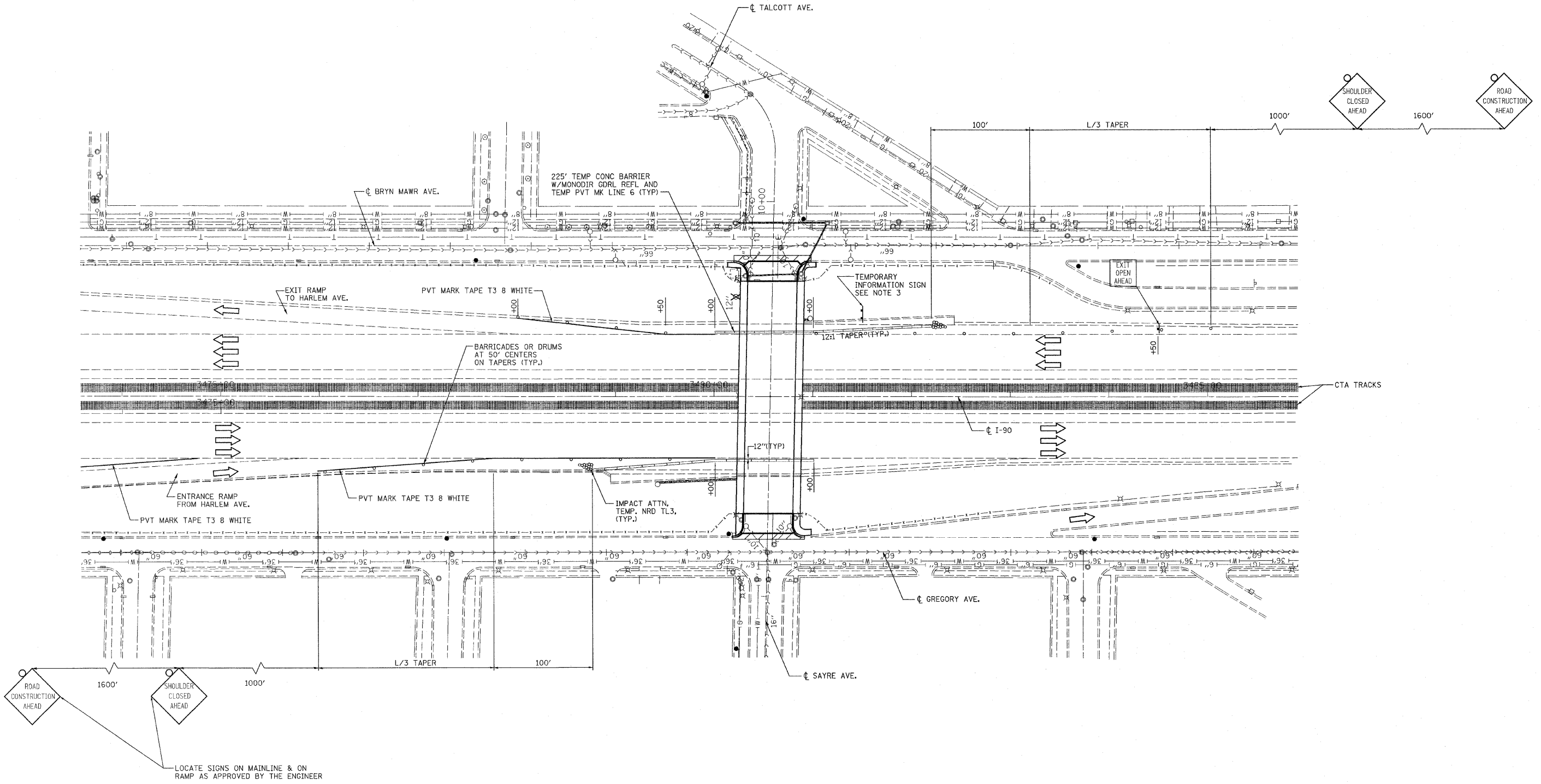


F.A.I. RTE.	SECTION	COUNTY	TOTAL SHEETS	SHEET NO.
90	1414B	COOK	74	8
STA.		TO STA.		
FED. ROAD DIST. NO. 7		ILLINOIS		FED. AID PROJECT
CONTRACT NO. 60384				

- NOTES:**
- FOR ADDITIONAL INFORMATION ON SHOULDER CLOSURE ON I-90 SEE SHEET TC-17
 - FOR ADDITIONAL INFORMATION ON EXIT RAMP TO HARLEM AVE. SEE IDOT STD 701411
 - THE TEMPORARY INFORMATION SIGN SHALL BE PLACED AT A LOCATION AS APPROVED BY THE ENGINEER.



mp:\net\lisle.r\1/15/2009 5:45:24:5 PM q:\idbt\9187_b0\drawings\rdwy\shfts\DOT\NS_MOT\190_01.dgn

PATRICK ENGINEERING INC.
 LISLE, ILLINOIS

REVISIONS	
NAME	DATE

ILLINOIS DEPARTMENT OF TRANSPORTATION
 SAYRE AVENUE OVER I-90

SUGGESTED STAGES OF CONSTRUCTION
 AND TRAFFIC CONTROL
 I-90 SHOULDER CLOSURE

SCALE: 1"=50'
 DATE DEC. 2001

DRAWN BY TCK
 CHECKED BY TWL