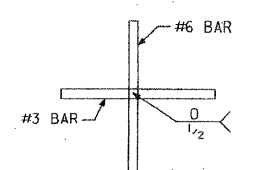
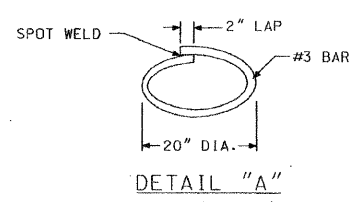


CODE	COMMODITY	SIZE	QUANTITY
20-9545-	ROD, WELDING LINCOLN WELD OR EQUAL	#7018	5#
31-	WIRE, TIE STEEL STAINLESS Q0 W423 COND. "A" SOFT	.062	1.0#



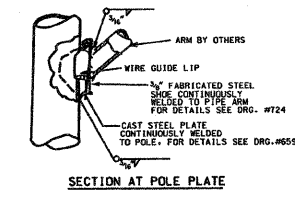
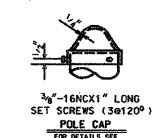
DETAIL "B"



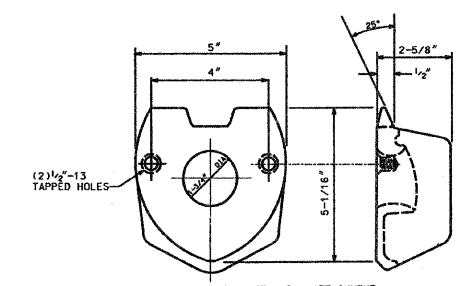
DETAIL "A"

REVISION	DATE

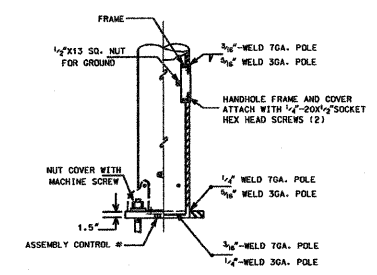
STEEL CAGES FOR POLE FOUNDATIONS
 CITY OF CHICAGO
 793A
 10-12-02



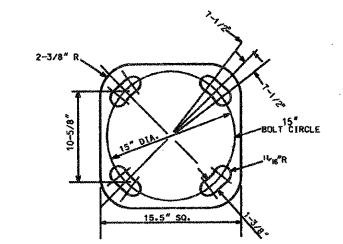
SECTION AT POLE PLATE



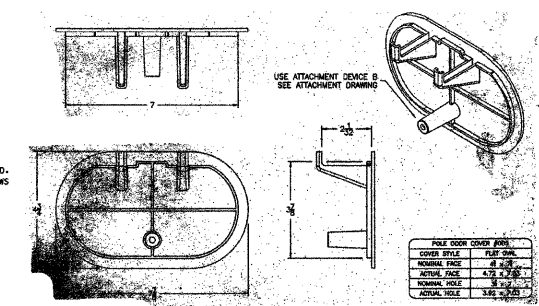
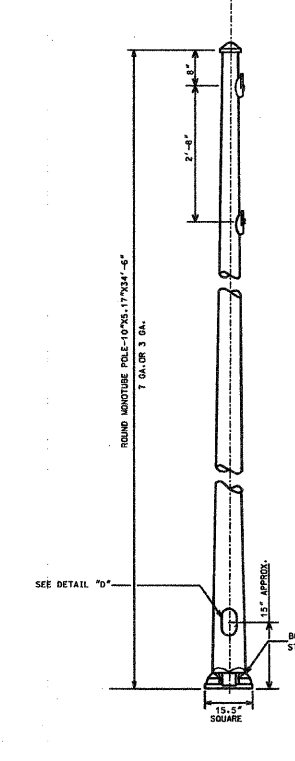
2 BOLT MAST ARM ATTACHMENT
 FOR DETAILS SEE DRG. # 659 MATERIAL: CAST STEEL



DETAIL "D"



DETAIL "A"
 BOLT SLOTS



HANDHOLE DETAIL

5.17"x10.0" STEEL/34"-6" POLE 7 OR 3 GAUGE	
CITY OF CHICAGO BUREAU OF ELECTRICITY	
ROBERT IVY SUPERVISING ENGINEER	ROBERT CARTER ENGINEER
RON POOL ENGINEER	
Dwg. No. 808	
10-03-01	

15:39:42 14 JAN 2009 E:\PROJECTS\Projects 2000\PatrickEng\soyfe\DETAILS\2007\E4_22 of 71_Citydetail3.dgn

GO GANDHI AND ASSOCIATES, INC.
 ENGINEERS AND PLANNERS
 6035 N. NORTHWEST HIGHWAY
 SUITE 306
 CHICAGO, ILLINOIS 60631 TEL. (773) 774-5910

REVISIONS	
NAME	DATE

ILLINOIS DEPARTMENT OF TRANSPORTATION

CITY OF CHICAGO
 BUREAU OF ELECTRICITY
 LIGHTING STANDARDS
 SAYRE AVENUE OVER
 INTERSTATE 90 (KENNEDY EXPRESSWAY)

SCALE: NONE
 DATE: 2/1/2008

DRAWN BY: MAE
 CHECKED BY: MK/PKG