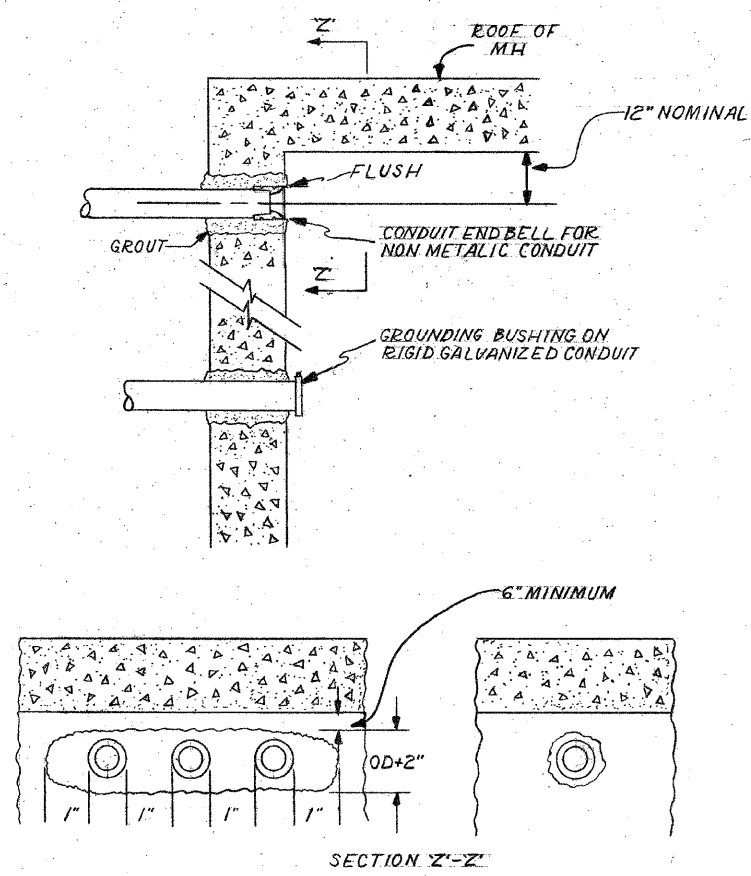


CONDUIT INSTALLATION THROUGH EXISTING MANHOLE OR HANDHOLE WALL

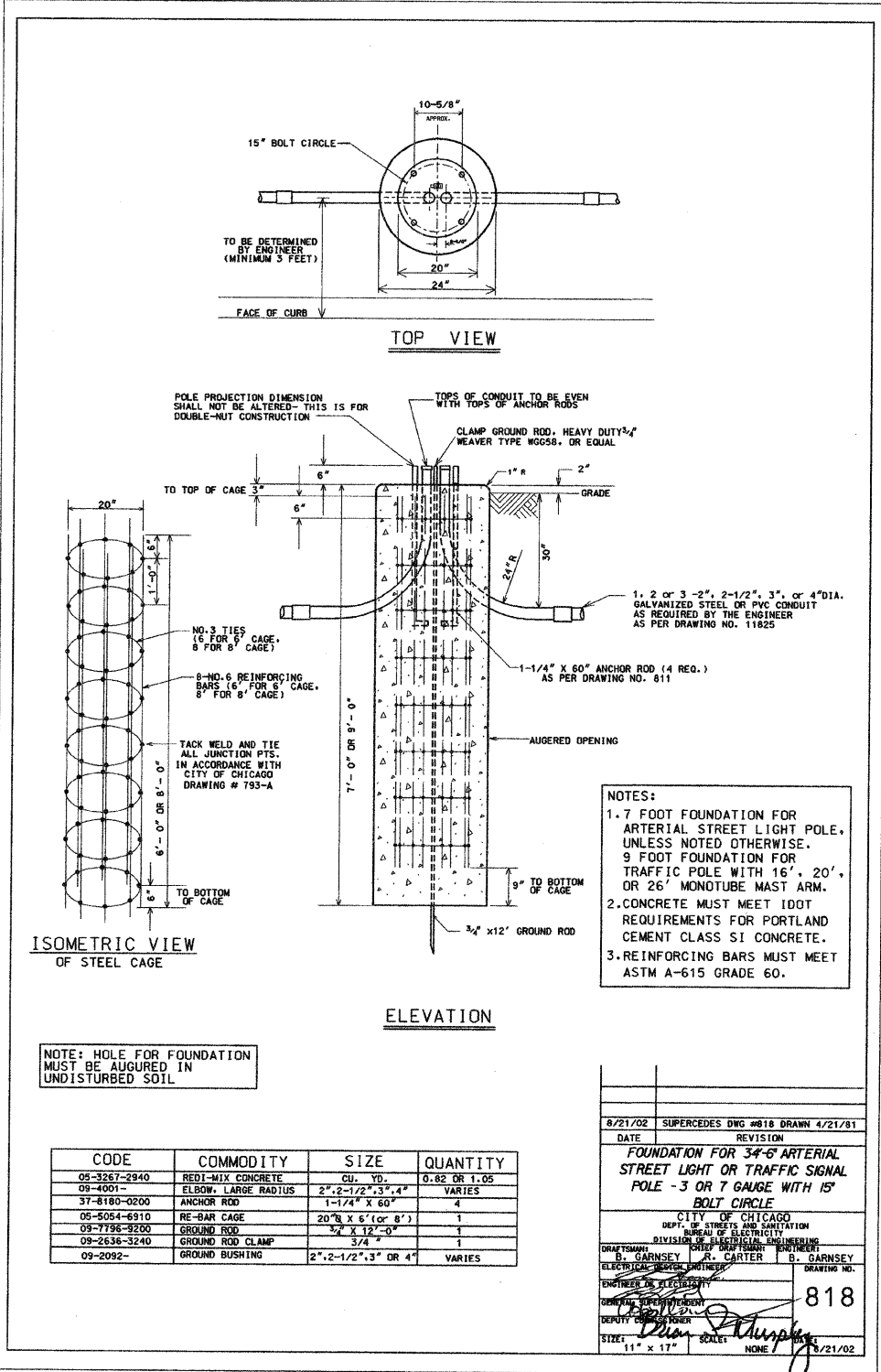


OPENING THROUGH WALL TO BE KEPT TO MINIMUM SIZE TO ADMIT CONDUIT AND SUFFICIENT GROUT TO ASSURE SEALING WALL.

INSTALLATION METHOD OF INSTALLING CONDUIT THRU MANHOLE WALL

CITY OF CHICAGO
DEPT. OF STREETS AND SANITATION
BUREAU OF ELECTRICITY
DIVISION OF ELECTRICAL ENGINEERING

DRAWN	CHECKED	ENGINEER
A.M. JOHNSON	R. SYCKOWSKI	R.L. MARTIN
 ENGINEER OF ELECTRICITY 814		8 1/2" X 14" SCALE N.T.S.



NOTE: HOLE FOR FOUNDATION MUST BE AUGURED IN UNDISTURBED SOIL

CODE	COMMODITY	SIZE	QUANTITY
05-3267-2940	REDI-MIX CONCRETE	CU. YD.	0.62 OR 1.05
05-4001-	ELBOW, LARGE RADIUS	2", 2-1/2", 3", 4"	VARIES
37-8160-0200	ANCHOR ROD	1-1/4" X 60"	4
05-6064-6310	RE-BAR CAGE	20" X 6" (or 8")	1
05-7758-3200	GROUND ROD	3/4" X 12'-0"	1
09-2636-3240	GROUND ROD CLAMP	3/4"	1
09-2092-	GROUND BUSHING	2", 2-1/2", 3" OR 4"	VARIES

- NOTES:
- 1.7 FOOT FOUNDATION FOR ARTERIAL STREET LIGHT POLE, UNLESS NOTED OTHERWISE. 9 FOOT FOUNDATION FOR TRAFFIC POLE WITH 16', 20', OR 26' MONOTUBE MAST ARM.
 - CONCRETE MUST MEET IDOT REQUIREMENTS FOR PORTLAND CEMENT CLASS SI CONCRETE.
 - REINFORCING BARS MUST MEET ASTM A-615 GRADE 60.

6/21/02 SUPERCEDES DNG #818 DRAWN 4/21/81

DATE REVISION

FOUNDATION FOR 34'-6" ARTERIAL STREET LIGHT OR TRAFFIC SIGNAL POLE - 3 OR 7 GAUGE WITH 15" BOLT CIRCLE

CITY OF CHICAGO
DEPT. OF STREETS AND SANITATION
BUREAU OF ELECTRICITY
DIVISION OF ELECTRICAL ENGINEERING

DRAWN BY: B. GARNSEY
CHECKED BY: R. CARTER
ENGINEER OF ELECTRICITY

818

11" x 17" SCALE NONE DATE 6/21/02

REVISIONS	
NAME	DATE

ILLINOIS DEPARTMENT OF TRANSPORTATION

CITY OF CHICAGO
BUREAU OF ELECTRICITY
LIGHTING STANDARDS
INTERSTATE 90 (KENNEDY EXPRESSWAY)

SCALE: NONE
DATE: 2/1/2008

DRAWN BY: MAE
CHECKED BY: MK/PKG

I:\PROJECTS\Projects_2000\PatrickEnd(sav)\DETAILS\2007\E6_24 of 71_CityDetail5.dgn