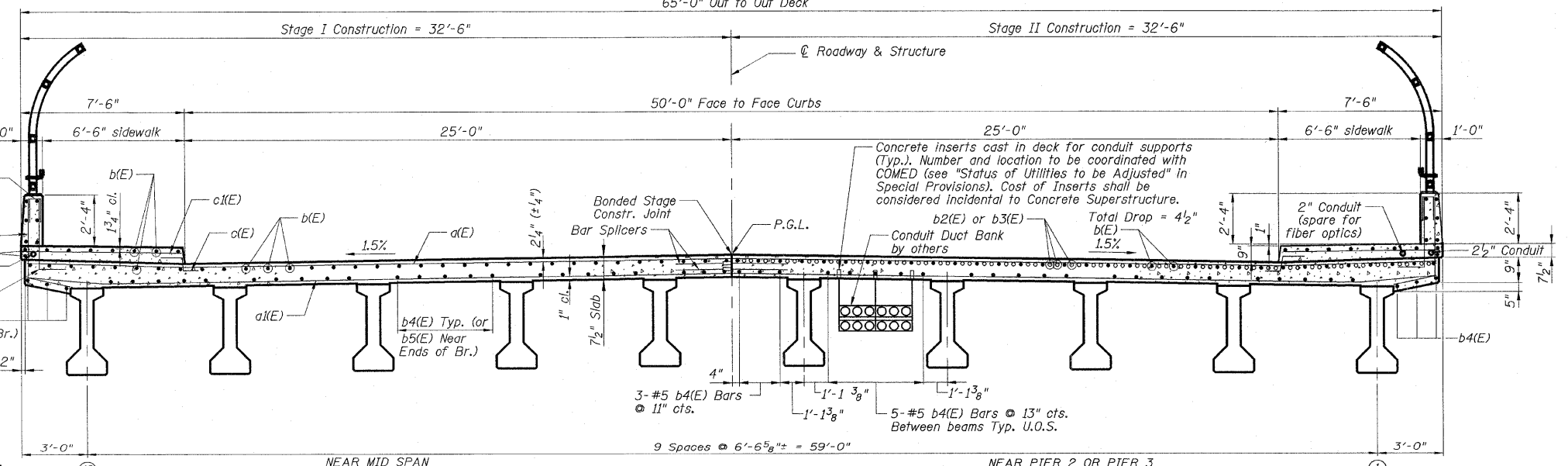
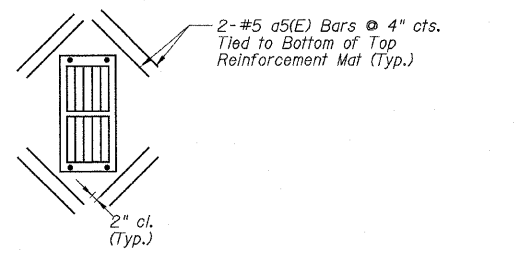


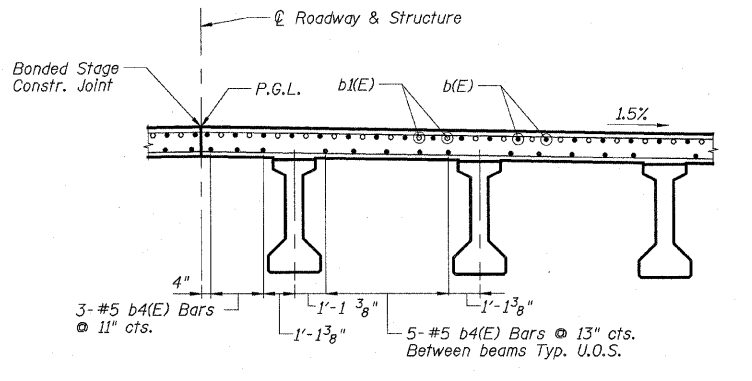
**PLAN**



**CROSS SECTION**  
(Looking North)



**DETAIL 'B'**  
Cut longitudinal reinforcement to clear drainage scuppers.



**DETAIL 'A'**  
(Reinforcement Near Pier 1, Looking North)

TYP. LAP SPLICE	
Bar Size	Min. Lap
#5	1'-8"

**Notes:**  
 Dimensions are based on a Rolled Rail Joint. If the Contractor elects to use the Welded Rail Joint, the dimensions may require adjustments to satisfy the details on Sheet S10.  
 Bars indicated thus 20 x 3 - #5 etc. Indicates 20 lines of bars with 3 lengths per line.  
 U.O.S. = Unless Otherwise Shown  
 See Sheet S8 for superstructure details and Bill of Material.  
 See Sheet S15 for sections A-A, C-C & D-D.  
 See Sheet S29 for Bar Splicer Details.  
 See Sheet S8 for Parapet details and reinforcement.  
 See Sheet S1 for location of Drainage Scuppers.

REVISIONS	
NAME	DATE

ILLINOIS DEPARTMENT OF TRANSPORTATION  
 DECK PLAN  
 FA ROUTE 173 (SAYRE AVENUE) OVER INTERSTATE 90 (KENNEDY EXPRESSWAY)  
 COOK COUNTY STATION 8+02.48  
 SECTION NO. 267-1414-15D  
 STRUCTURE NO. 016-1104  
 SCALE: NONE DRAWN BY: R. Kaye  
 DATE: DEC. 2007 CHECKED BY: R. Clinton