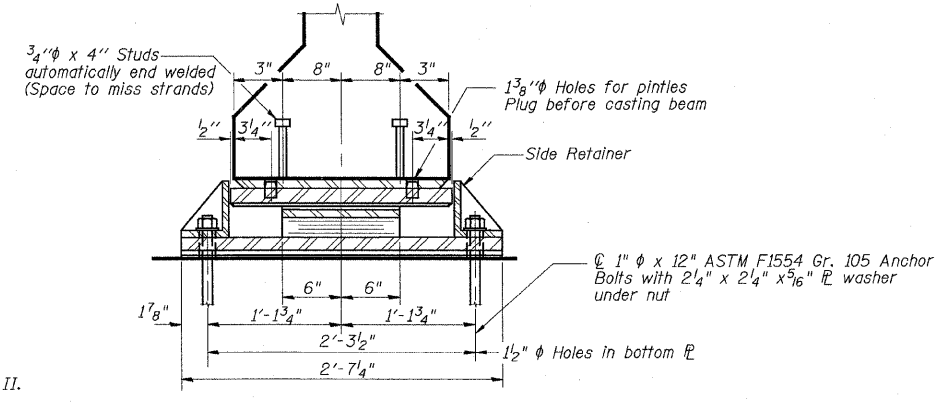
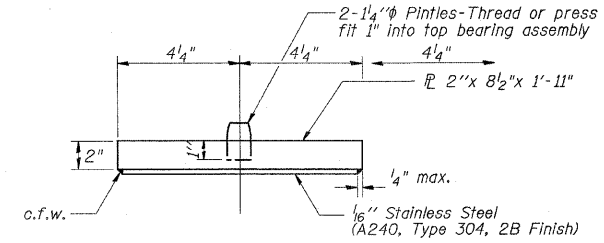


SECTION AT ABUTMENTS

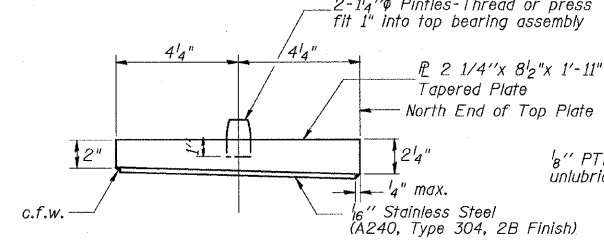
TYPE II ELASTOMERIC EXP. BRG.



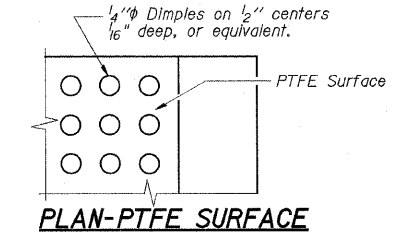
SECTION A-A



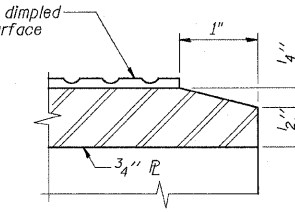
TOP BEARING ASSEMBLY
(N. Abut.)



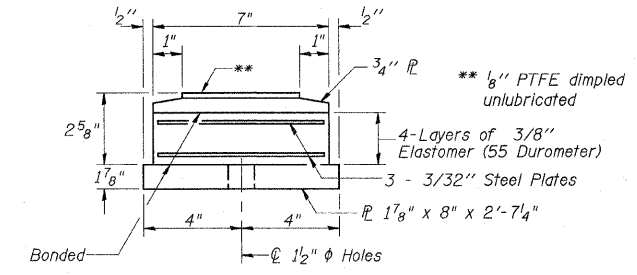
TAPERED TOP BEARING ASSEMBLY
(S. Abut.)



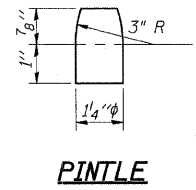
PLAN-PTFE SURFACE



SECTION THRU PTFE



BOTTOM BEARING ASSEMBLY

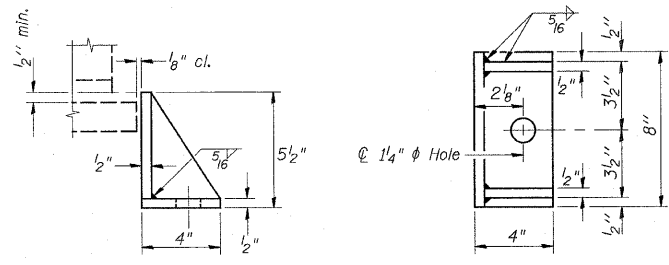


PINTLE

Note:
The 1/8" PTFE sheet shall be bonded directly to the top steel plate with a two-component, medium viscosity epoxy resin, conforming to the requirements of the Federal Specification MMM-A-134, Type I. The bond agent shall be applied on the full area of the contact surfaces.

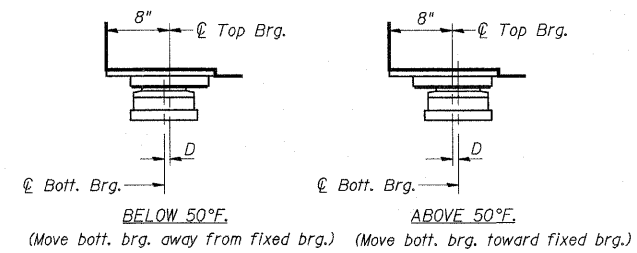
Bonding of 1/8" PTFE sheet during vulcanizing process will be permitted provided the process and method of adjusting assembly height is approved by the Engineer.

See sheet S14 for additional details of plate cast with beam.



SIDE RETAINER

Equivalent rolled angle with stiffeners will be allowed in lieu of welded plates.



SETTING ANCHOR BOLTS AT EXP. BRG.

D = 1/8" per each 100' of expansion for every 15° temp. change from the normal temp. of 50°F.

BILL OF MATERIAL

Item	Unit	Total
Elastomeric Bearing Assembly, Type II	Each	20
Anchor Bolts, 1"	Each	40

ILLINOIS DEPARTMENT OF TRANSPORTATION
 BEARING DETAILS II
 FA ROUTE 173 (SAYRE AVENUE) OVER INTERSTATE 90 (KENNEDY EXPRESSWAY)
 COOK COUNTY STATION 8+02.48
 SECTION 267-1414-15D
 STRUCTURE NO. 016-1104
 SCALE: NONE
 DATE: DEC. 2007
 DRAWN BY: R. Clinton
 CHECKED BY: R. Kaye

REVISIONS

NAME	DATE