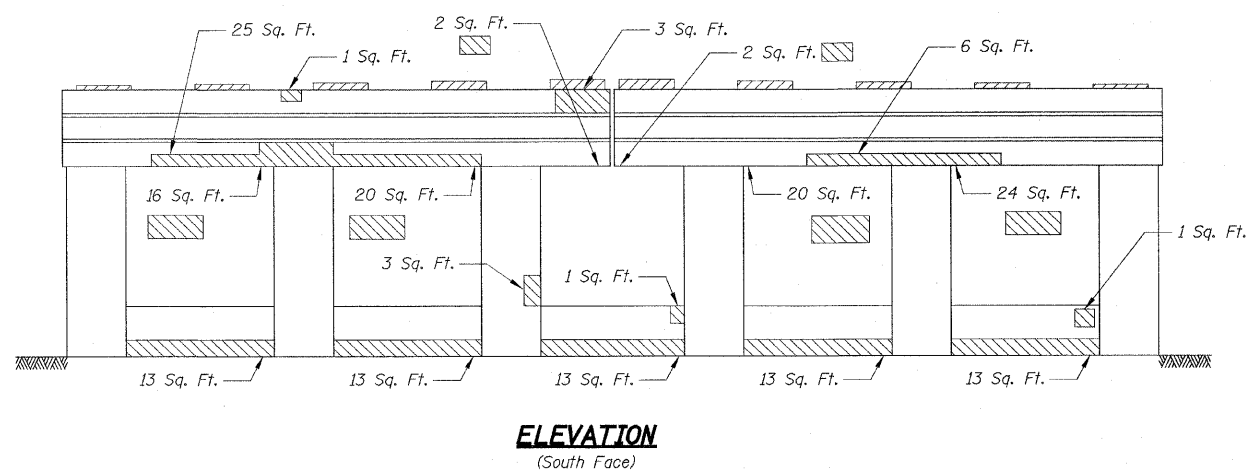


- NOTES:**
- Pier repair operations shall begin after removal of the existing superstructure and shall be completed prior to erection of the new beams.
  - All electrical conduits shall be protected during construction. Any conduit damage during construction shall be removed and replaced by the Contractor at the Contractor's expense.
  - Quantities shown in the Bill of Material have been increased above the theoretical values to allow for additional repairs authorized by the Engineer.

- LEGEND:**
- Indicates limits of Structural Repair of Concrete (depth equal to or less than 5")
  - Indicates limits of Epoxy Crack Injection
  - Indicates areas of concrete removal



**BILL OF MATERIAL**

ITEM	UNIT	QUANTITY
* Polymer Modified Portland Cement Mortar	Sq. Ft.	20
* Structural Repair of Concrete (Depth Equal to or Less than 5")	Sq. Ft.	260
* Structural Repair of Concrete (Depth Greater than 5")	Sq. Ft.	100
Epoxy Crack Injection	Foot	10.0
Concrete Removal	Cu. Yd.	1.5

\* See Special Provisions

REVISIONS	
NAME	DATE

ILLINOIS DEPARTMENT OF TRANSPORTATION  
**PIER 1 REPAIR**  
 FA ROUTE 173 (SAYRE AVENUE) OVER  
 INTERSTATE 90 (KENNEDY EXPRESSWAY)  
 COOK COUNTY STATION 8+02.48  
 SECTION 267-1414-15D  
 STRUCTURE NO. 016-1104

SCALE: NONE DRAWN BY: R. Clinton  
 DATE: DEC. 2007 CHECKED BY: G. Hatlestad