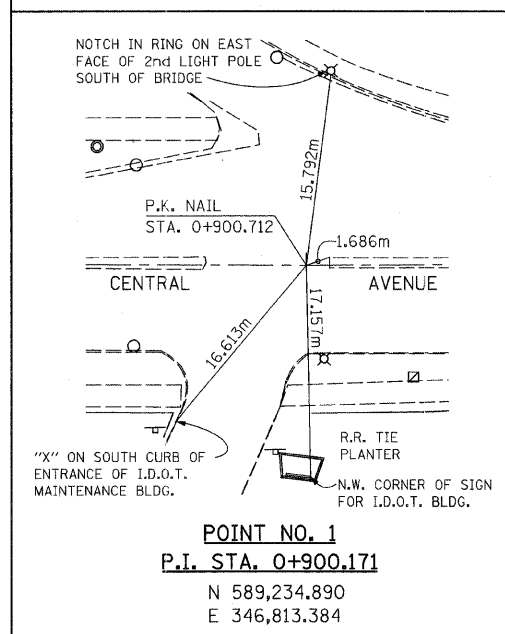
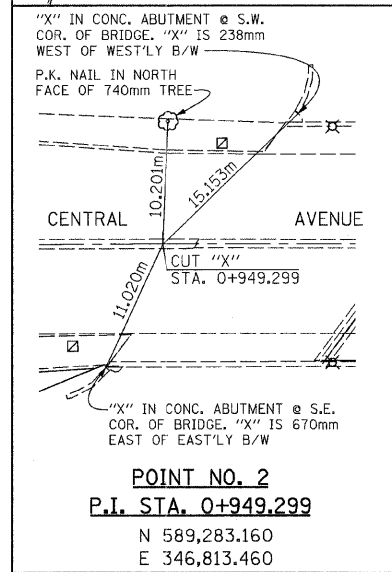
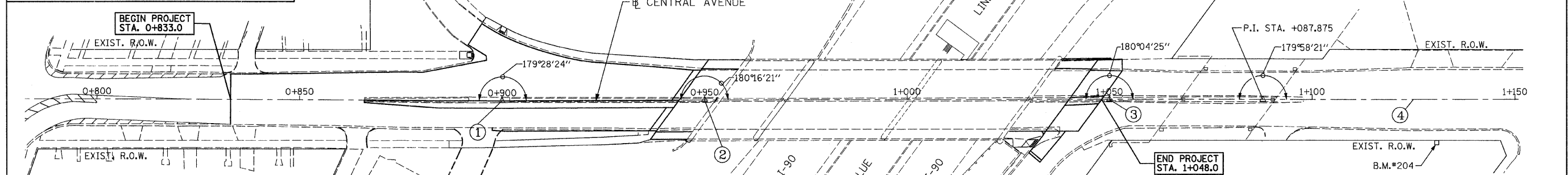


F.A.I. RTE.	SECTION	COUNTY	TOTAL SHEETS	SHEET NO.
90	1213B-1	COOK	94	13
STA. 0+800		TO STA. 1+075		
FED. ROAD DIST. NO. 1		ILLINOIS FED. AID PROJECT		

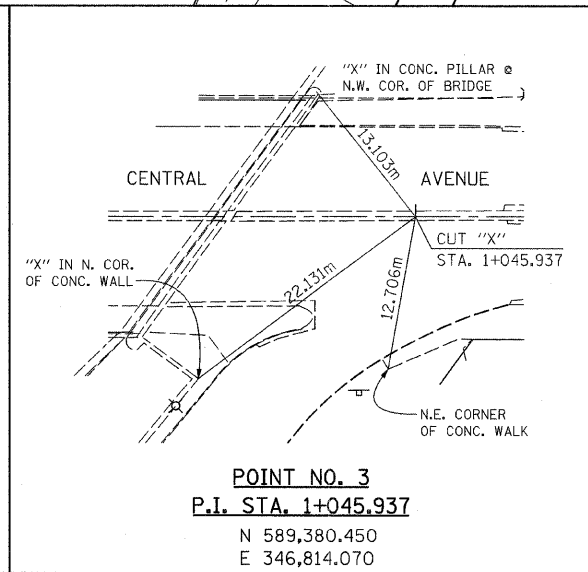
CONTRACT NO. 60640



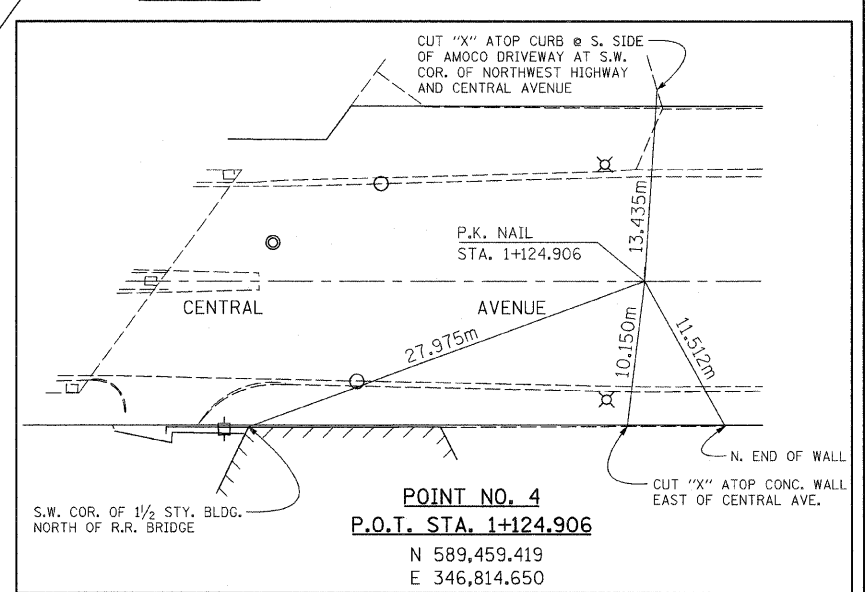
POINT NO. 1
P.I. STA. 0+900.171
 N 589,234.890
 E 346,813.384



POINT NO. 2
P.I. STA. 0+949.299
 N 589,283.160
 E 346,813.460



POINT NO. 3
P.I. STA. 1+045.937
 N 589,380.450
 E 346,814.070



POINT NO. 4
P.O.T. STA. 1+124.906
 N 589,459.419
 E 346,814.650

B.M. #204 ELEV. 188.264
 "□" AT N. END OF 0.260m CONC. WALL; SE COR. OF NORTHWEST HWY. & CENTRAL AVE. 15.5m SOUTH OF TRAFFIC SIGNAL AT NORTHWEST HWY. AND CENTRAL AVE.

B.M. #206 ELEV. 181.919
 "□" ON N.W. CORNER OF CONC. WALL ON SOUTH SIDE OF ENTRANCE RAMP TO EAST BOUND KENNEDY EXPWY.

B.M. #419 ELEV. 187.921
 CITY OF CHICAGO BENCHMARK; LEVEL WITH GROUND, 24.7m NORTH OF NORTH LINE OF LAWRENCE AVE; 2.4m WEST OF EAST LINE OF LINDER AVE; 0.4m WEST OF WEST EDGE OF EAST CONC. WALK

B.M. #202 ELEV. 187.854
 "X" ON NE BOLT OF LIGHT POLE, FIRST LIGHT ON SOUTH SIDE OF ENTRANCE RAMP FROM CENTRAL AVE. TO E.B. I-90

CHRISTIAN-ROGE & ASSOCIATES, INC.
 ENGINEERS-PLANNERS-SURVEYORS
 211 WEST WACKER DRIVE
 CHICAGO, ILLINOIS 60606
 1-312-372-2023 FAX: 1-312-372-5274

REVISIONS	
NAME	DATE

ILLINOIS DEPARTMENT OF TRANSPORTATION

**CENTRAL AVENUE
 ALIGNMENT PLAN, REFERENCE TIES
 AND BENCHMARKS**

SCALE: 1 : 500
 DATE: NOVEMBER 2007

DRAWN BY: B.K.
 CHECKED BY: S.J.P.