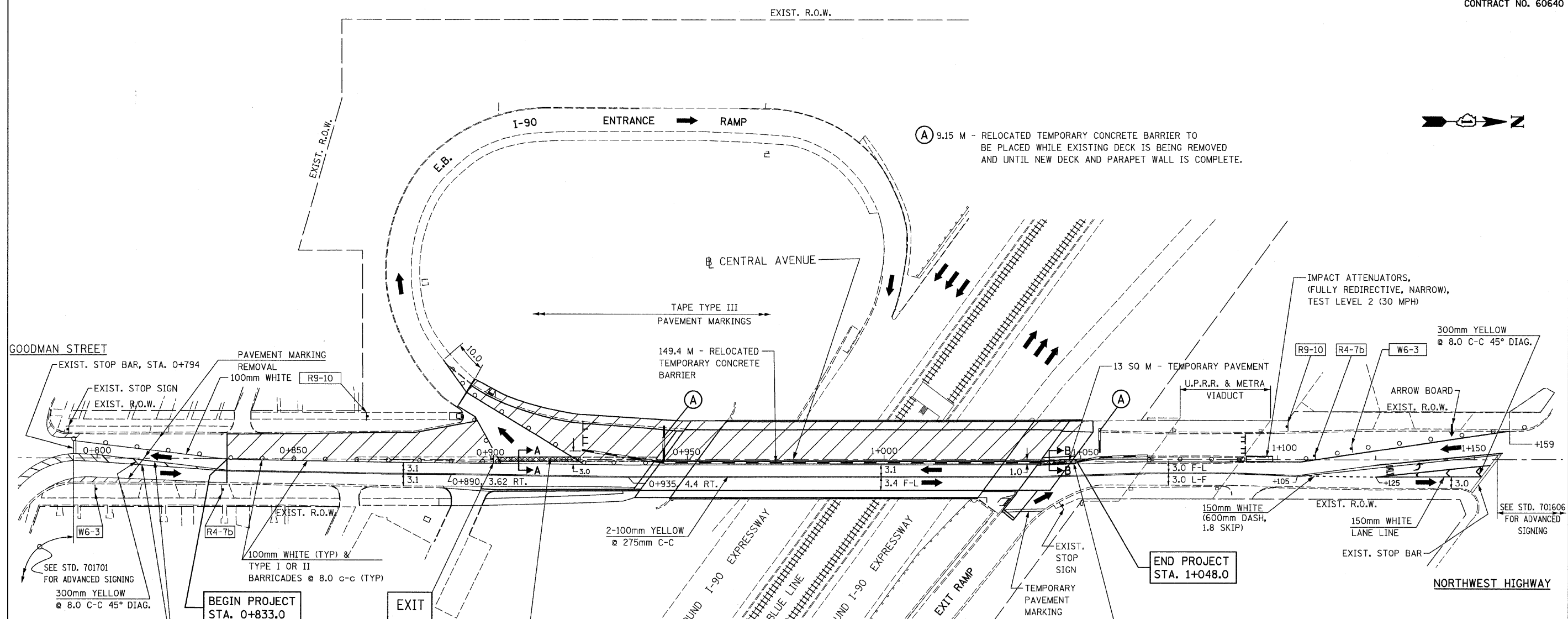


F.A.I. RTE.	SECTION	COUNTY	TOTAL SHEETS	SHEET NO.
90	1213B-1	COOK	94	20
STA. 0+800		TO STA. 1+075		
FED. ROAD DIST. NO. 1		ILLINOIS FED. AID PROJECT		
CONTRACT NO. 60640				



- LEGEND**
- TYPE I OR TYPE II BARRICADE (MAXIMUM 8.0 M C-C)
  - ← TRAFFIC MOVEMENT
  - ▬ TEMPORARY CONCRETE BARRIER
  - ▨ WORK ZONE
  - ONLY → TEMPORARY PAVEMENT MARKING (LETTERS & SYMBOLS) - TYP.
  - ▩ TEMPORARY PAVEMENT
  - ← R3-1 TEMPORARY SIGN & SIGN DESIGNATION
  - ⊥ TYPE III BARRICADE w/FLASHING LIGHTS
  - ▬ PAVEMENT MARKING REMOVAL

- NOTES:**
- FOR STAGING NOTES SEE SHEET NO. 17.
  - FOR MOT BRIDGE TYPICAL SECTIONS SEE SHEET NO. 50.
  - ALL INTERSTATE ROUTE MARKING SIGNS AND RELATED DIRECTIONAL ARROWS SHALL BE RELOCATED TO TEMPORARY SUPPORTS AT LOCATIONS DESIGNATED BY THE ENGINEER. AT THE END OF STAGE TWO THESE SIGNS WILL BE REMOUNTED TO THEIR ORIGINAL LOCATION. THIS COST SHALL BE INCLUDE IN TRAFFIC CONTROL AND PROTECTION (SPECIAL).
  - FOR SECTIONS A-A & B-B, SEE SHEET NO. 18.
  - FOR TEMPORARY SIGN LEGEND SEE SHEET NO. 18.
  - THE NUMBER OF TYPE III BARRICADES REQUIRED SHALL BE AS DIRECTED BY THE ENGINEER.

REVISIONS	
NAME	DATE

ILLINOIS DEPARTMENT OF TRANSPORTATION  
 SUGGESTED STAGES OF CONSTRUCTION  
 AND TRAFFIC CONTROL  
 CENTRAL AVENUE  
 STAGE II

SCALE: 1 : 500  
 DATE: NOVEMBER 2007  
 DRAWN BY: B.K.  
 CHECKED BY: S.J.P.

**CR & A**  
 CHRISTIAN-ROGE & ASSOCIATES, INC.  
 ENGINEERS-PLANNERS-SURVEYORS  
 211 WEST WACKER DRIVE  
 CHICAGO, ILLINOIS 60606  
 1-312-372-2023 FAX: 1-312-372-5274