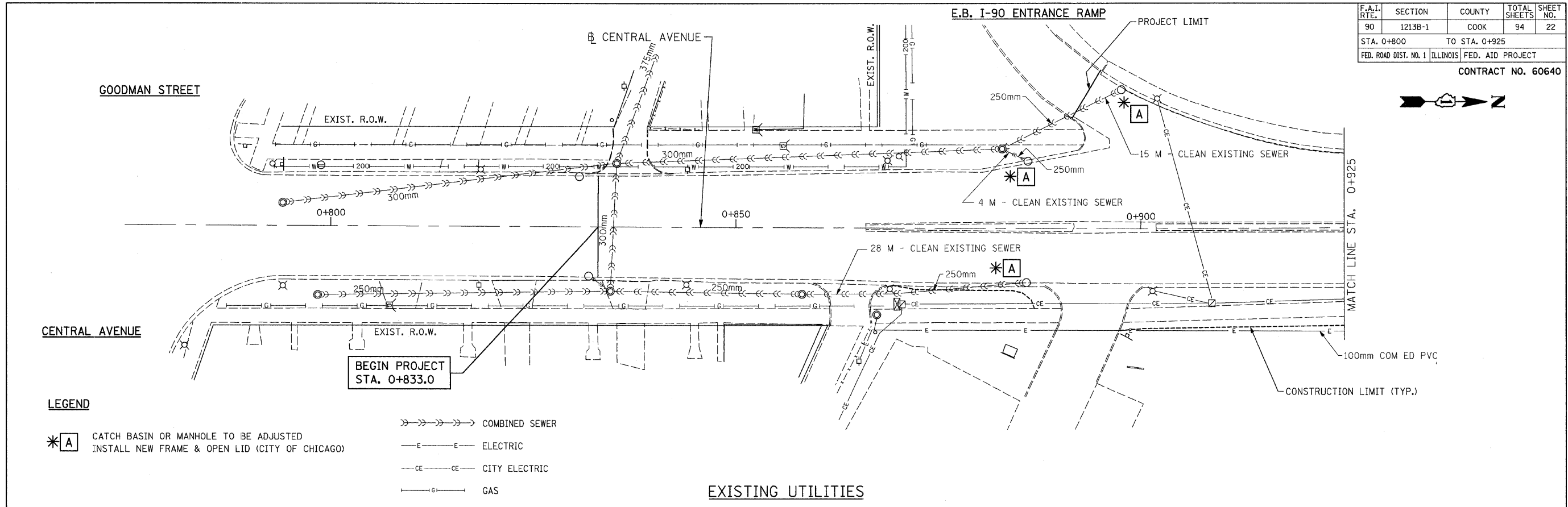


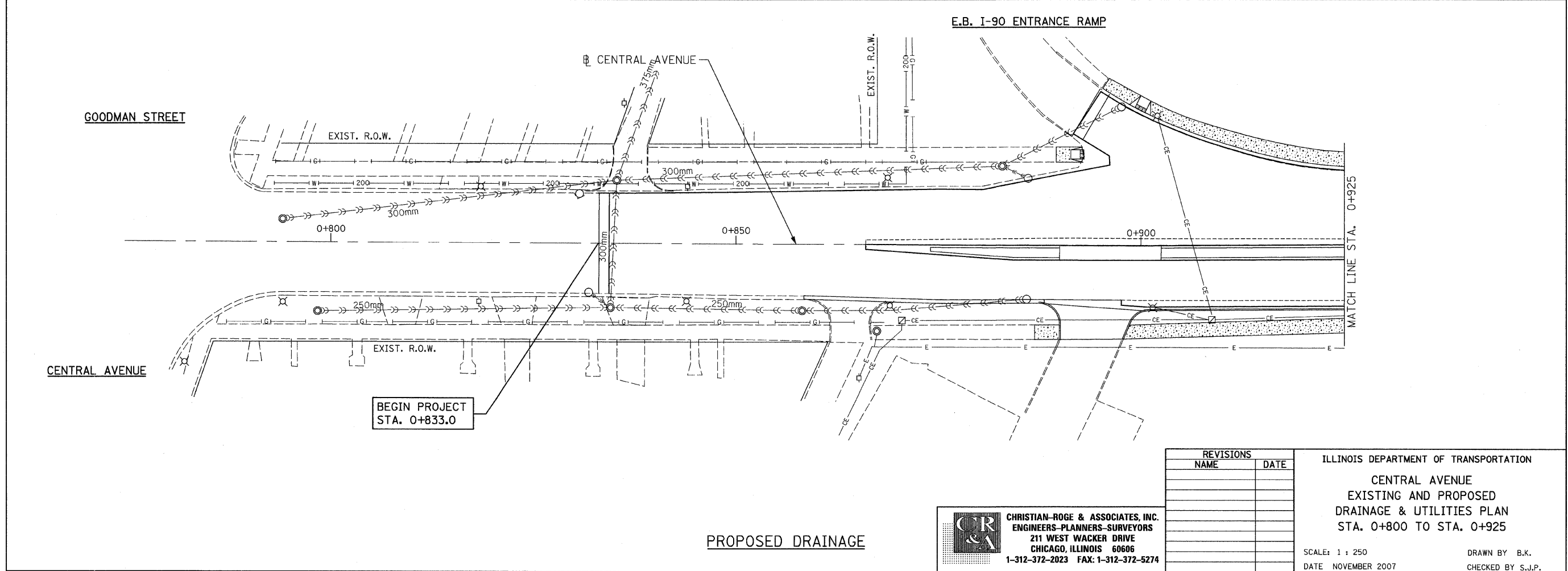
F.A.I. RTE.	SECTION	COUNTY	TOTAL SHEETS	SHEET NO.
90	1213B-1	COOK	94	22
STA. 0+800		TO STA. 0+925		
FED. ROAD DIST. NO. 1 ILLINOIS FED. AID PROJECT				
CONTRACT NO. 60640				



**LEGEND**

- \*A CATCH BASIN OR MANHOLE TO BE ADJUSTED  
INSTALL NEW FRAME & OPEN LID (CITY OF CHICAGO)
- >--->---> COMBINED SEWER
- E---E--- ELECTRIC
- CE---CE--- CITY ELECTRIC
- G---G--- GAS

**EXISTING UTILITIES**



**PROPOSED DRAINAGE**

REVISIONS	
NAME	DATE

**CR & A**  
**CHRISTIAN-ROGE & ASSOCIATES, INC.**  
 ENGINEERS-PLANNERS-SURVEYORS  
 211 WEST WACKER DRIVE  
 CHICAGO, ILLINOIS 60606  
 1-312-372-2023 FAX: 1-312-372-5274

ILLINOIS DEPARTMENT OF TRANSPORTATION  
 CENTRAL AVENUE  
 EXISTING AND PROPOSED  
 DRAINAGE & UTILITIES PLAN  
 STA. 0+800 TO STA. 0+925

SCALE: 1 : 250  
 DATE: NOVEMBER 2007

DRAWN BY: B.K.  
 CHECKED BY: S.J.P.