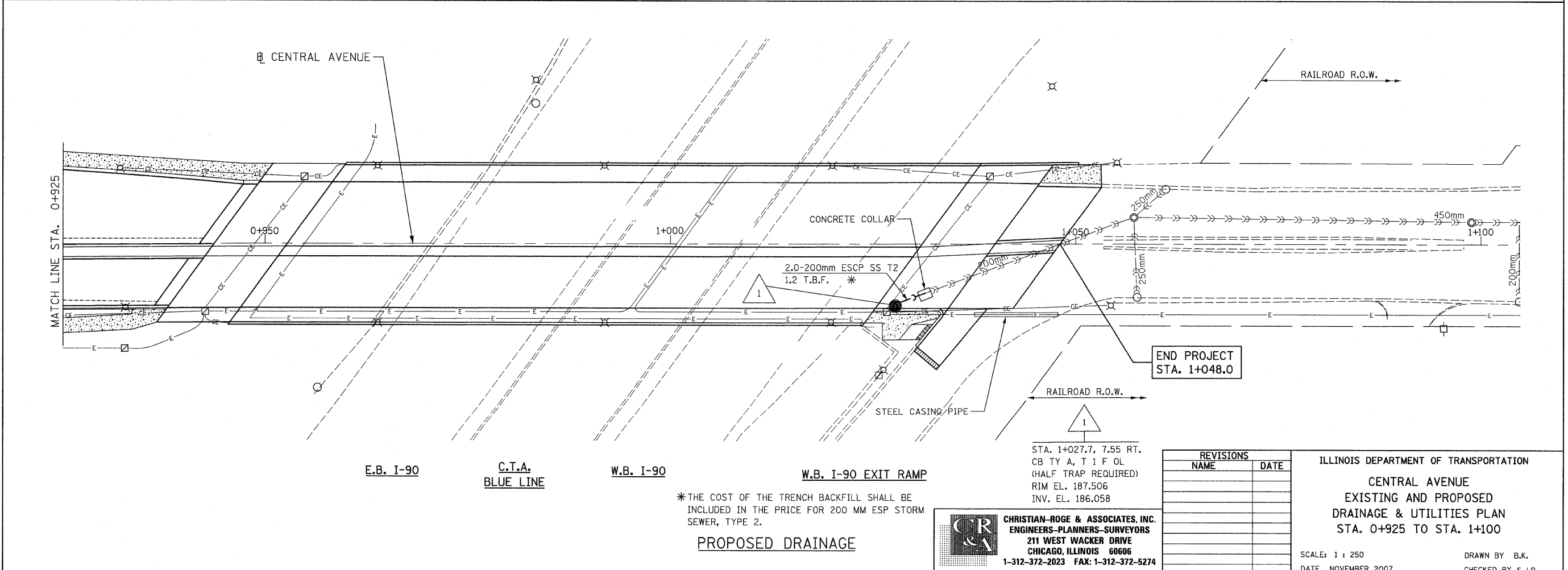
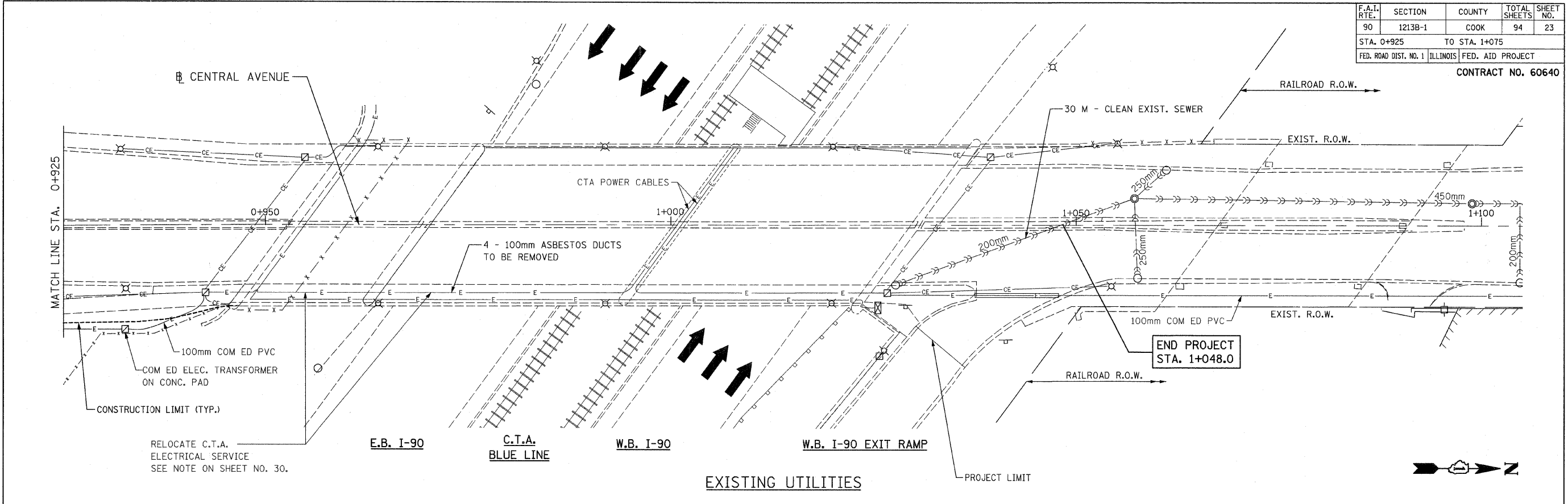


F.A.I. RTE.	SECTION	COUNTY	TOTAL SHEETS	SHEET NO.
90	1213B-1	COOK	94	23
STA. 0+925		TO STA. 1+075		
FED. ROAD DIST. NO. 1 ILLINOIS FED. AID PROJECT				
CONTRACT NO. 60640				



*THE COST OF THE TRENCH BACKFILL SHALL BE INCLUDED IN THE PRICE FOR 200 MM ESP STORM SEWER, TYPE 2.

CHRISTIAN-ROGE & ASSOCIATES, INC.
 ENGINEERS-PLANNERS-SURVEYORS
 211 WEST WACKER DRIVE
 CHICAGO, ILLINOIS 60606
 1-312-372-2023 FAX: 1-312-372-5274

REVISIONS	
NAME	DATE

ILLINOIS DEPARTMENT OF TRANSPORTATION
 CENTRAL AVENUE
 EXISTING AND PROPOSED
 DRAINAGE & UTILITIES PLAN
 STA. 0+925 TO STA. 1+100

SCALE: 1 : 250
 DATE: NOVEMBER 2007
 DRAWN BY: B.K.
 CHECKED BY: S.J.P.