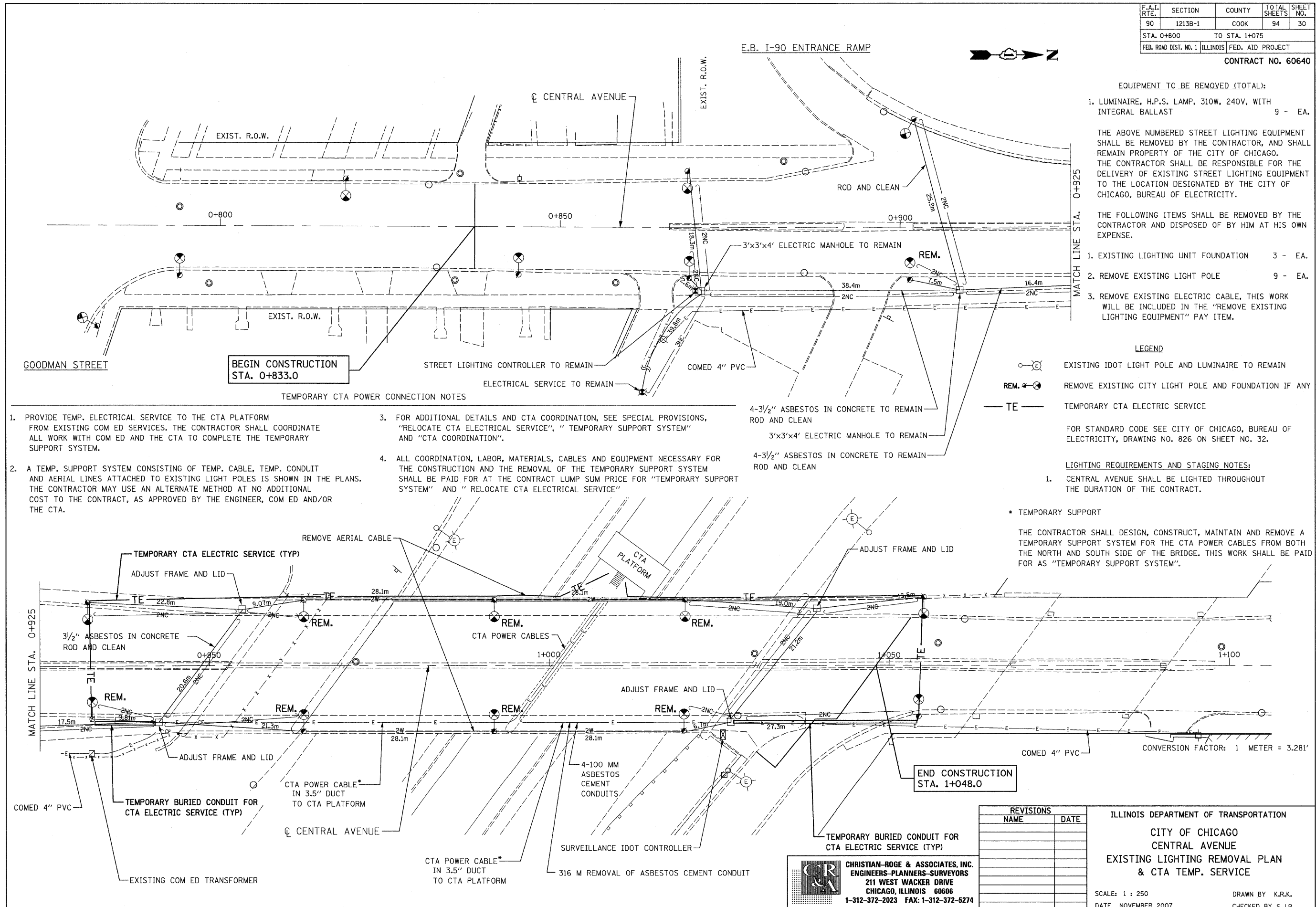


F.A.I. RTE.	SECTION	COUNTY	TOTAL SHEETS	SHEET NO.
90	1213B-1	COOK	94	30
STA. 0+800		TO STA. 1+075		
FED. ROAD DIST. NO. 1 ILLINOIS FED. AID PROJECT				

CONTRACT NO. 60640



- EQUIPMENT TO BE REMOVED (TOTAL):**
1. LUMINAIRE, H.P.S. LAMP, 310W, 240V, WITH INTEGRAL BALLAST 9 - EA.

THE ABOVE NUMBERED STREET LIGHTING EQUIPMENT SHALL BE REMOVED BY THE CONTRACTOR, AND SHALL REMAIN PROPERTY OF THE CITY OF CHICAGO. THE CONTRACTOR SHALL BE RESPONSIBLE FOR THE DELIVERY OF EXISTING STREET LIGHTING EQUIPMENT TO THE LOCATION DESIGNATED BY THE CITY OF CHICAGO, BUREAU OF ELECTRICITY.

THE FOLLOWING ITEMS SHALL BE REMOVED BY THE CONTRACTOR AND DISPOSED OF BY HIM AT HIS OWN EXPENSE.

1. EXISTING LIGHTING UNIT FOUNDATION 3 - EA.
2. REMOVE EXISTING LIGHT POLE 9 - EA.
3. REMOVE EXISTING ELECTRIC CABLE, THIS WORK WILL BE INCLUDED IN THE "REMOVE EXISTING LIGHTING EQUIPMENT" PAY ITEM.

- LEGEND**
- ⊙ E EXISTING IDOT LIGHT POLE AND LUMINAIRE TO REMAIN
 - REM. ⊙ REMOVE EXISTING CITY LIGHT POLE AND FOUNDATION IF ANY
 - TE — TEMPORARY CTA ELECTRIC SERVICE

FOR STANDARD CODE SEE CITY OF CHICAGO, BUREAU OF ELECTRICITY, DRAWING NO. 826 ON SHEET NO. 32.

- LIGHTING REQUIREMENTS AND STAGING NOTES:**
1. CENTRAL AVENUE SHALL BE LIGHTED THROUGHOUT THE DURATION OF THE CONTRACT.

* TEMPORARY SUPPORT
 THE CONTRACTOR SHALL DESIGN, CONSTRUCT, MAINTAIN AND REMOVE A TEMPORARY SUPPORT SYSTEM FOR THE CTA POWER CABLES FROM BOTH THE NORTH AND SOUTH SIDE OF THE BRIDGE. THIS WORK SHALL BE PAID FOR AS "TEMPORARY SUPPORT SYSTEM".

- TEMPORARY CTA POWER CONNECTION NOTES**
1. PROVIDE TEMP. ELECTRICAL SERVICE TO THE CTA PLATFORM FROM EXISTING COM ED SERVICES. THE CONTRACTOR SHALL COORDINATE ALL WORK WITH COM ED AND THE CTA TO COMPLETE THE TEMPORARY SUPPORT SYSTEM.
 2. A TEMP. SUPPORT SYSTEM CONSISTING OF TEMP. CABLE, TEMP. CONDUIT AND AERIAL LINES ATTACHED TO EXISTING LIGHT POLES IS SHOWN IN THE PLANS. THE CONTRACTOR MAY USE AN ALTERNATE METHOD AT NO ADDITIONAL COST TO THE CONTRACT, AS APPROVED BY THE ENGINEER, COM ED AND/OR THE CTA.

3. FOR ADDITIONAL DETAILS AND CTA COORDINATION, SEE SPECIAL PROVISIONS, "RELOCATE CTA ELECTRICAL SERVICE", "TEMPORARY SUPPORT SYSTEM" AND "CTA COORDINATION".
4. ALL COORDINATION, LABOR, MATERIALS, CABLES AND EQUIPMENT NECESSARY FOR THE CONSTRUCTION AND THE REMOVAL OF THE TEMPORARY SUPPORT SYSTEM SHALL BE PAID FOR AT THE CONTRACT LUMP SUM PRICE FOR "TEMPORARY SUPPORT SYSTEM" AND "RELOCATE CTA ELECTRICAL SERVICE"

REVISIONS	
NAME	DATE

ILLINOIS DEPARTMENT OF TRANSPORTATION
 CITY OF CHICAGO
 CENTRAL AVENUE
 EXISTING LIGHTING REMOVAL PLAN
 & CTA TEMP. SERVICE

SCALE: 1 : 250
 DATE: NOVEMBER 2007
 DRAWN BY: K.R.K.
 CHECKED BY: S.J.P.

CHRISTIAN-ROGE & ASSOCIATES, INC.
 ENGINEERS-PLANNERS-SURVEYORS
 211 WEST WACKER DRIVE
 CHICAGO, ILLINOIS 60606
 1-312-372-2023 FAX: 1-312-372-5274