

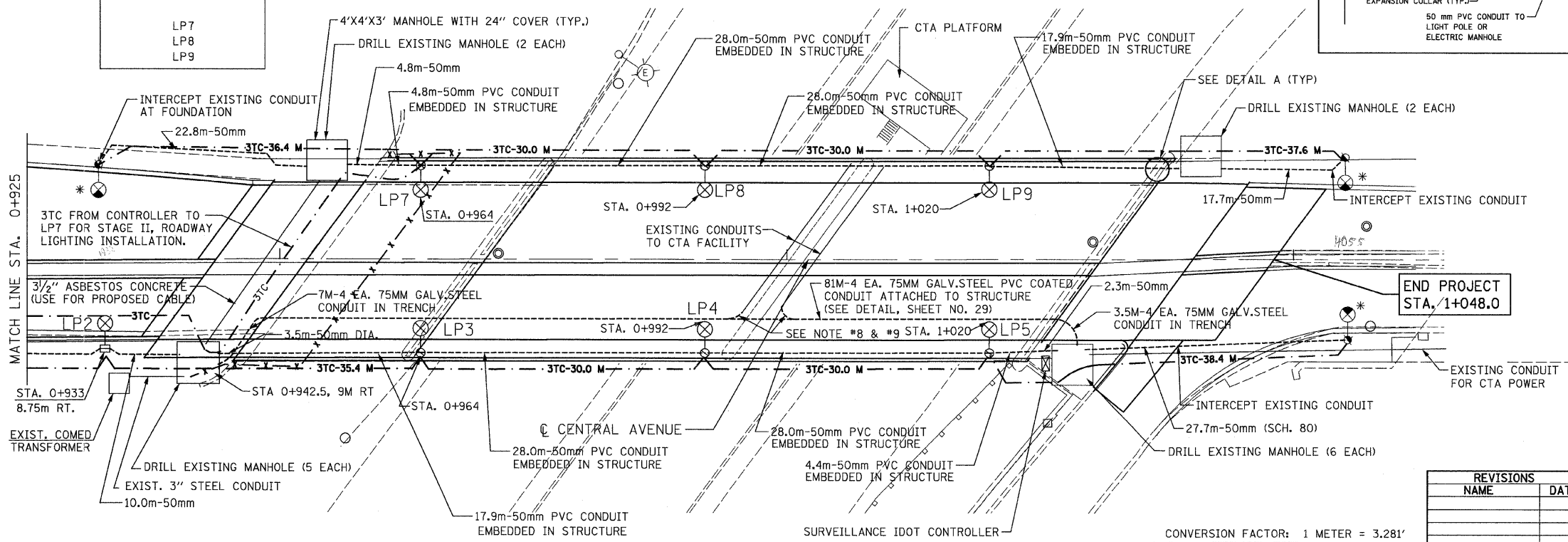
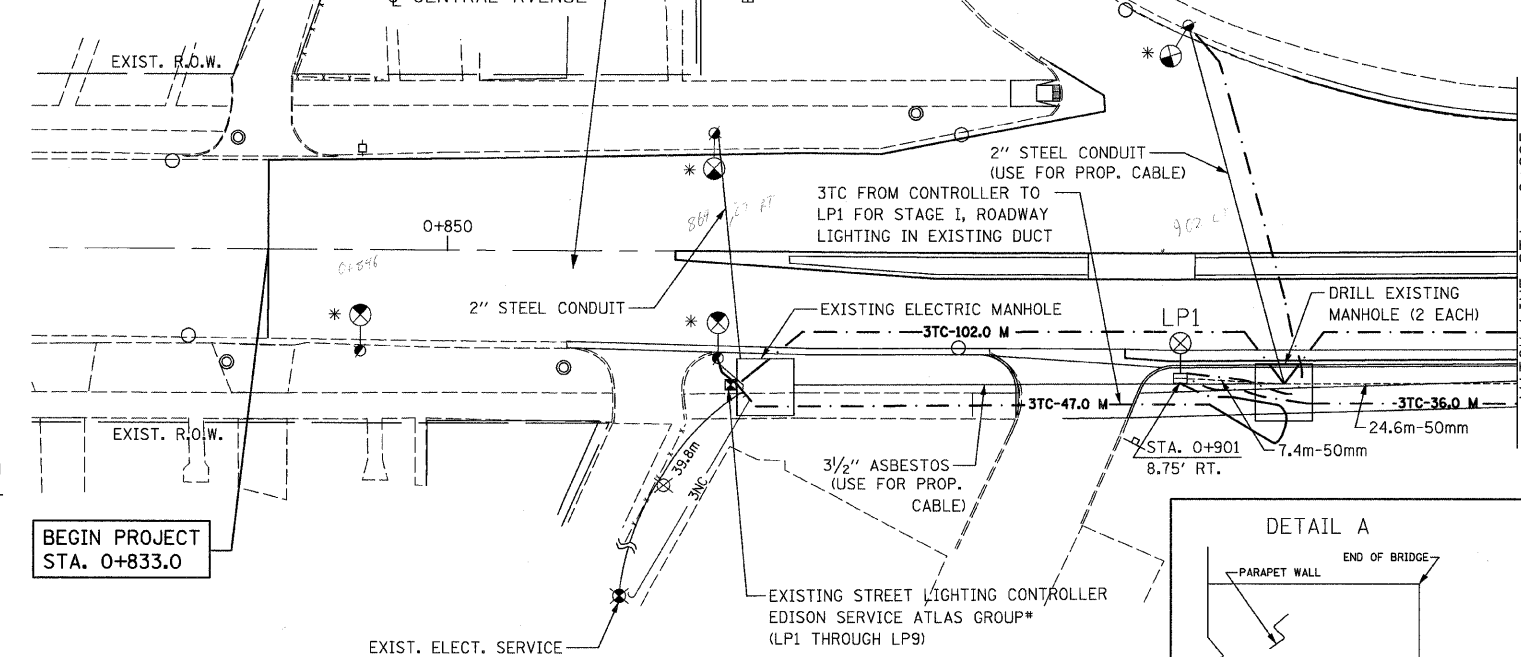
INSTALLATION NOTES:

- FOR 34'-6", 7 GAUGE, 10" POLE INSTALL 24" DIA. 9' DEEP POLE FOUNDATION WITH 15" BOLT CIRCLE AND 1/4" DIA. ANCHOR BOLTS PER STANDARD DWG. NO. 818 AND 837.
- FOR PARAPET MOUNTED 32'- 6", POLE, 3 GAUGE USE 11.5' BOLT CIRCLE AND 1" DIA. ANCHOR BOLTS (SEE STRUCTURE PLANS FOR DETAILS).
- INSTALL 2" PVC (SCHEDULE 40) IN TRENCH 30" BELOW SIDEWALK OR GROUND, EXCEPT WHERE NOTED.
- INSTALL 2" PVC (SCHEDULE 80) IN TRENCH 36" BELOW THE SURFACE OF ROAD WHERE REQUIRED.
- ELECTRIC CABLE FOR STREET LIGHTING IN CONDUIT SHALL BE TRIPLEXED 2-1/C NO. 6 & 1-1/C NO. 8 EPR/RHW AT LIGHT POLES. CABLE IS TO EXTEND 3m BEYOND CONDUIT.
- COORDINATE THE POWER DISCONNECTION AND CONNECTION TO EXISTING AND NEW LIGHTING FIXTURES WITH THE CITY OF CHICAGO, BUREAU OF ELECTRICITY.
- SPlicing IN MANHOLES OR HANDHOLES IS NOT PERMISSIBLE. CABLE SHALL BE TERMINATED AT ELECTRICAL EQUIPMENT.
- ONE 75MM CONDUIT FROM EACH HANDHOLE SHALL BE CONNECTED TO THE EXISTING CONDUITS ATTACHED TO THE CENTER PIER AND THREE 75 MM CONDUIT SHALL BE CONTINUOUS FROM MANHOLE TO MANHOLE.
- THE CONTRACTOR SHALL PROVIDE AND INSTALL NEW CABLE, CONDUIT BENDS AND HARDWARE AS NEEDED TO RELOCATE THE TWO ELECTRIC SERVICES FROM THE TEMPORARY SUPPORT SYSTEM TO THE CTA PLATFORM. THIS WORK SHALL BE PAID FOR AS "RELOC ATE CTA ELECTRIC SERVICE".

LIST OF NEW LIGHTING UNITS FROM EXISTING CONTROLLER

CKT
LP1
LP2
LP3
LP4
LP5
LP7
LP8
LP9

- LEGEND**
- ⊕-⊗ PROPOSED 10.5M (34'6") CITY LIGHT POLE AND 480W LUMINAIRE
 - PROPOSED 50mm (2") CONDUIT PVC SCHEDULE 40 (UNLESS OTHERWISE NOTED)
 - ⊕-⊗ PROPOSED 9.9M (32'6") CITY LIGHT POLE AND 480W LUMINAIRE (MOUNTED ON BRIDGE PARAPET)
 - TRIPLEXED 2-1/C NO. 6 & 1-1/C NO. 8 EPR/RHW
 - * PAINT EXISTING POLE



F.A.I. RTE.	SECTION	COUNTY	TOTAL SHEETS	SHEET NO.
90	1213B-1	COOK	94	31
STA. 0+800 TO STA. 1+075		FED. ROAD DIST. NO. 1 ILLINOIS FED. AID PROJECT		
CONTRACT NO. 60640				

GENERAL NOTES:

- THE ELECTRICAL WORK SHALL BE PERFORMED IN ACCORDANCE WITH THE NATIONAL & THE CITY OF CHICAGO ELECTRICAL CODES.
- SEE THE CITY OF CHICAGO, BUREAU OF ELECTRICITY DRAWING NO. 826 STANDARD LEGEND ON SHEET NO. 32.
- THE CONTRACTOR IS RESPONSIBLE FOR MAINTENANCE OF STREET LIGHTING FROM START OF THE PROJECT UNTIL THE CITY OF CHICAGO, BUREAU OF ELECTRICITY ACCEPTS NEW INSTALLATION.
- FOR THE STAGED CONSTRUCTION OF ROADWAY LIGHTING AND LIGHTING QUANTITIES, SEE ELECTRIC STAGING SHEET NO. 26.
- ALL CONDUIT SHALL BE INSTALLED PRIOR TO ANY PAVEMENT WIDENING OR PAVEMENT CONSTRUCTION.
- ALL DIMENSIONS ARE IN METERS UNLESS OTHERWISE NOTED.
- ALL SIDEWALK REMOVED TO ACCOMMODATE THE LIGHTS, CONDUITS AND HANDHOLES SHALL BE PAID FOR AS: "SIDEWALK REMOVED AND REPLACED."
- FOUNDATION LOCATIONS:
 - IF SIDEWALK IS 2.4m (8') WIDE OR LESS LOCATE FOUNDATION 0.3m (1') OFF PROPERTY LINE
 - IF SIDEWALK IS MORE THAN 2.4m (8') WIDE OR IF THE FOUNDATION IS IN THE GRASS PARKWAY, LOCATE THE ϕ OF FOUNDATION A MINIMUM OF 0.9m (3') FROM THE FACE OF CURB.

DATE	REVISION

SUPERSEDES DWG. # _____

WORK ORDER NO. _____ DATE _____

COST ALLOCATION ACCOUNT _____

APPROPRIATION ACCOUNT { MATERIAL _____ LABOR _____ }

CITY OF CHICAGO
DEPT. OF STREETS AND SANITATION
BUREAU OF ELECTRICITY
DIVISION OF ELECTRICAL ENGINEERING

DRAFTSMAN: _____ CHIEF DRAFTSMAN: _____ ENGINEER: _____

SUPERVISING ENGINEER: ELEC. DESIGN ENGR. _____ DWG. NO. _____

ENGINEER OF ELECTRICITY: _____

GEN'L Supt. OF CONSTRUCTION: _____

DEPUTY COMMISSIONER: _____

SCALE: 1 : 250 DATE: _____

REVISIONS	
NAME	DATE

ILLINOIS DEPARTMENT OF TRANSPORTATION

CITY OF CHICAGO
CENTRAL AVENUE
PROPOSED LIGHTING PLAN
STA. 0+833 TO STA. 1+062

SCALE: 1 : 250 DRAWN BY K.R.K.
DATE: NOVEMBER 2007 CHECKED BY S.J.P.

CONVERSION FACTOR: 1 METER = 3.281'

CR & A
CHRISTIAN-ROGE & ASSOCIATES, INC.
ENGINEERS-PLANNERS-SURVEYORS
211 WEST WACKER DRIVE
CHICAGO, ILLINOIS 60606
1-312-372-2023 FAX: 1-312-372-5274