

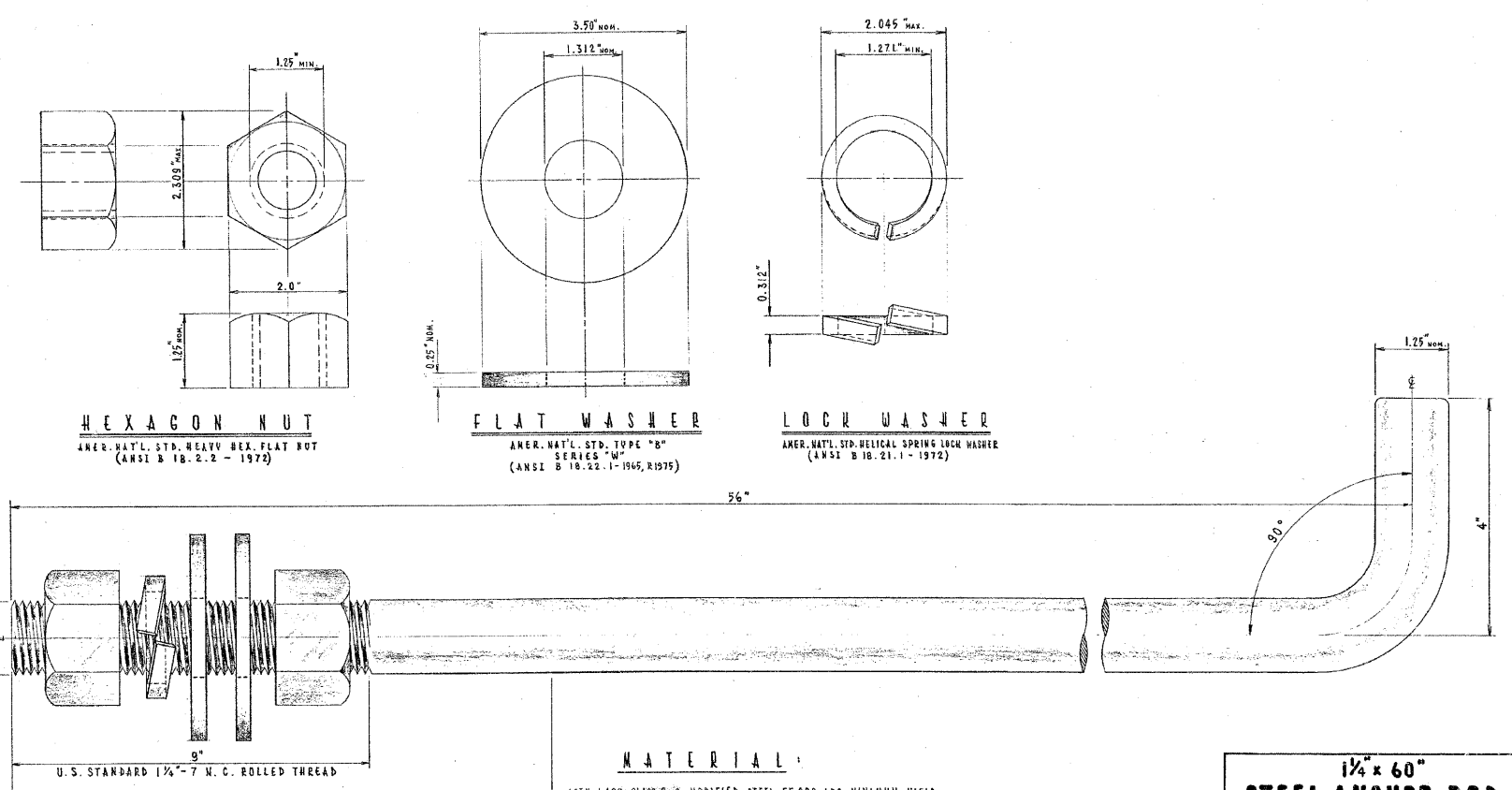
CABLE TRENCH

CONDUIT TRENCH

**NOTE**  
 EXCESS SOIL FROM TRENCH TO BE COMPLETELY REMOVED FROM SITE AS SOON AS PRACTICABLE.  
 BLACK DIRT TO BE TAMPED & THOROUGHLY COMPACTED AS SHOWN.

**STANDARD METHOD FOR BACKFILLING CABLE & CONDUIT TRENCHES IN SODDED PARKWAY & LAWNS**

CITY OF CHICAGO			
DEPT. OF STREETS & SANITATION			
DIVISION OF ELECTRICAL ENGINEERING			
REVISION	DRAWN	CHECKED	ENGINEER
A	W. E. HARP	M. J. HINE	J. O'CONNOR
B	ENG. IN CHARGE		DRG. NO.
C	Supt. of Const.		579
D	DEPUTY COM. Mgr.		
E	Supt. of Const.		
F	Supt. of Const.		
G	Supt. of Const.		
H	SIZE: 8 1/2 x 14"	SCALE: 1/4"	DATE: 7-14-61



**HEXAGON NUT**  
 AMER. NAT'L. STD. HEAVY HEX. FLAT NUT (ANSI B 18.2.2 - 1972)

**FLAT WASHER**  
 AMER. NAT'L. STD. TYPE "B" SERIES "W" (ANSI B 18.21.1-1945, R1975)

**LOCK WASHER**  
 AMER. NAT'L. STD. HELICAL SPRING LOCK WASHER (ANSI B 18.21.1 - 1972)

**MATERIAL:**

ASTM A400, CLASS B-2 MODIFIED STEEL, 55,000 LBS. MINIMUM YIELD.  
**HARDWARE** TO BE FURNISHED & ATTACHED IN PLACE ON ROD FOR SHIPPING:  
 2 HEX. NUTS, HEAVY, GALV., 1/4"  
 2 WASHERS, STEEL, ROUND, GALV., TYPE "B", SERIES "W", 1/4"  
 1 WASHER, LOCK, STEEL, GALV., HELICAL SPRING, REGULAR, 1/4"  
 BOLT & NUTS SHALL HAVE AN AMERICAN STANDARD CLASS 2 OR 3 FIT. (NUT IS TAPPED OVERSIZE BY 1/32")

**1/4" x 60" STEEL ANCHOR ROD**  
 COMMODITY CODE 37-8180-0236

CITY OF CHICAGO	
DEPT. OF STREETS AND SANITATION	
BUREAU OF ELECTRICITY	
DESIGNED BY	CHECKED BY
EUGENE GERULIS	M. SPINNE
ILL. STATE ENGINEER	DRG. NO.
811	
DATE: 4-6-3, 1962	

REVISIONS	NAME	DATE

ILLINOIS DEPARTMENT OF TRANSPORTATION  
 CITY OF CHICAGO  
 BUREAU OF ELECTRICITY DETAILS

SCALE: NONE  
 DATE: NOVEMBER 2007  
 DRAWN BY: K.R.K.  
 CHECKED BY: S.J.P.

**CR & A**  
 CHRISTIAN-ROGE & ASSOCIATES, INC.  
 ENGINEERS-PLANNERS-SURVEYORS  
 211 WEST WACKER DRIVE  
 CHICAGO, ILLINOIS 60606  
 312-372-2023 FAX: 312-372-5274