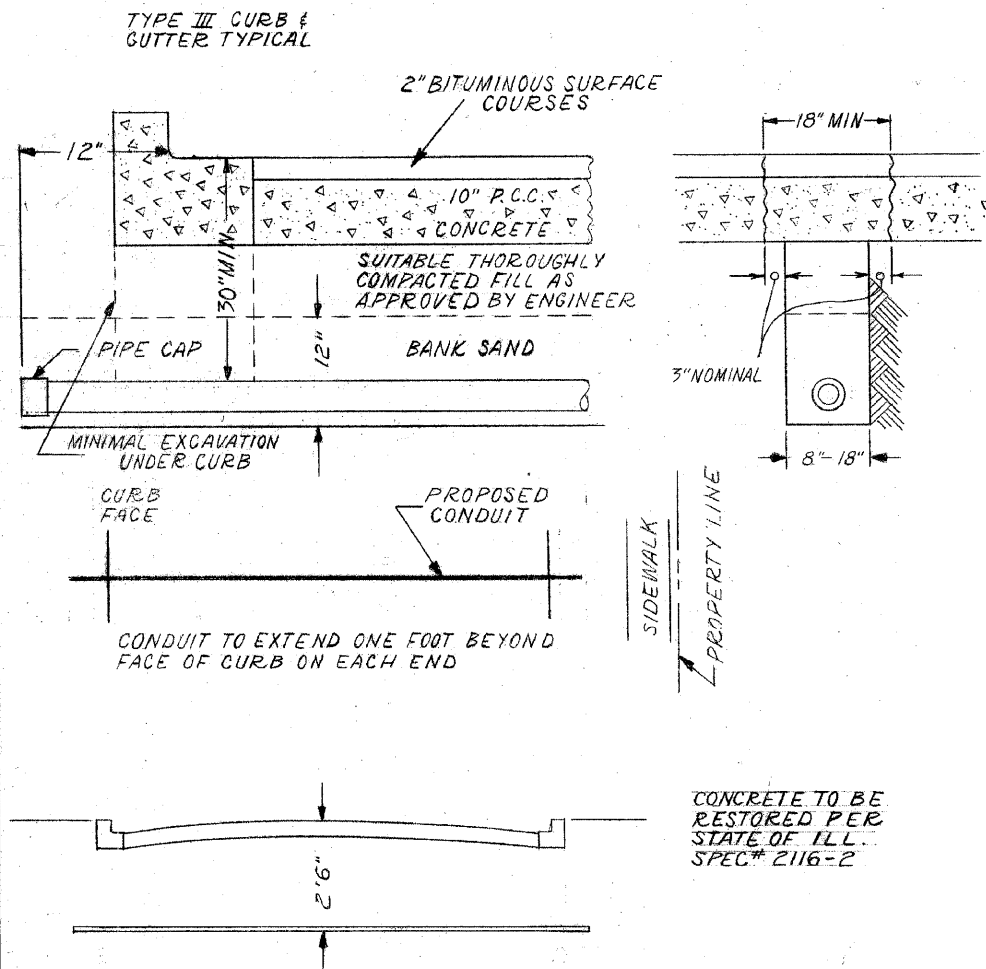


CONDUIT INSTALLATION UNDER PAVED STREET

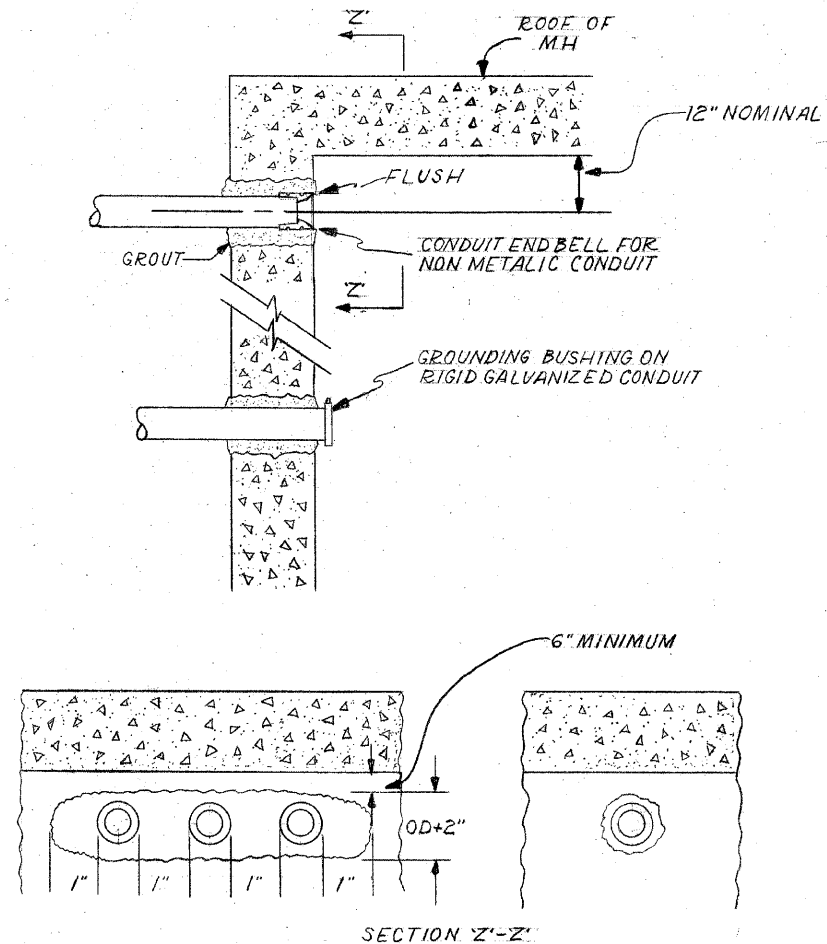


INSTALLATION METHOD OF  
INSTALLING CONDUIT UNDER  
PAVED ROADWAY

**CITY OF CHICAGO**  
DEPT. OF STREETS AND SANITATION  
BUREAU OF ELECTRICITY  
DIVISION OF ELECTRICAL ENGINEERING

DRAWN A.M. JOHNSON	CHECKED R. SYCKOWSKI	ENGINEER R.L. MARTIN
 THOMAS HILDRETH ENGINEER OF ELECTRICITY		DRG. NO. <b>813</b>
SIZE 8 1/2" X 14"	SCALE N.T.D.	DATE 3-13-01

CONDUIT INSTALLATION THROUGH EXISTING  
MANHOLE OR HANDHOLE WALL



OPENING THROUGH WALL TO BE KEPT TO MINIMUM SIZE TO ADMIT CONDUIT AND SUFFICIENT GROUT TO ASSURE SEALING WALL.

INSTALLATION METHOD OF  
INSTALLING CONDUIT THRU  
MANHOLE WALL

**CITY OF CHICAGO**  
DEPT. OF STREETS AND SANITATION  
BUREAU OF ELECTRICITY  
DIVISION OF ELECTRICAL ENGINEERING

DRAWN A.M. JOHNSON	CHECKED R. SYCKOWSKI	ENGINEER R.L. MARTIN
 THOMAS HILDRETH ENGINEER OF ELECTRICITY		DRG. NO. <b>814</b>
SIZE 8 1/2" X 14"	SCALE N.T.D.	DATE 3-13-01

**CR & A**  
CHRISTIAN-ROGE & ASSOCIATES, INC.  
ENGINEERS-PLANNERS-SURVEYORS  
211 WEST WACKER DRIVE  
CHICAGO, ILLINOIS 60606  
1-312-372-2023 FAX: 1-312-372-5274

REVISIONS	
NAME	DATE

ILLINOIS DEPARTMENT OF TRANSPORTATION

CITY OF CHICAGO  
BUREAU OF ELECTRICITY DETAILS

SCALE: NONE  
DATE: NOVEMBER 2007

DRAWN BY: K.R.K.  
CHECKED BY: S.J.P.