

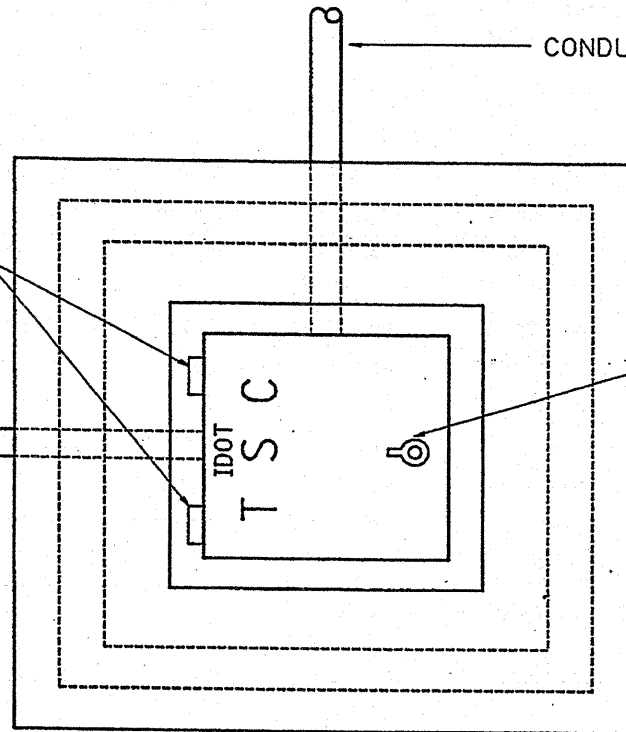
F.A.I. RTE.	SECTION	COUNTY	TOTAL SHEETS	SHEET NO.
90	1213B-1	COOK	94	44
STA.	TO STA.			
FED. ROAD DIST. NO. 1	ILLINOIS	FED. AID PROJECT		

TYPE "T" HINGES REQUIRED ONLY ON HEAVY DUTY SPECIAL

CONDUIT TYP.

CONDUIT TYP.

TYPE "G" HANDLE FOR BOTH HDHH AND HDHH SPECIAL

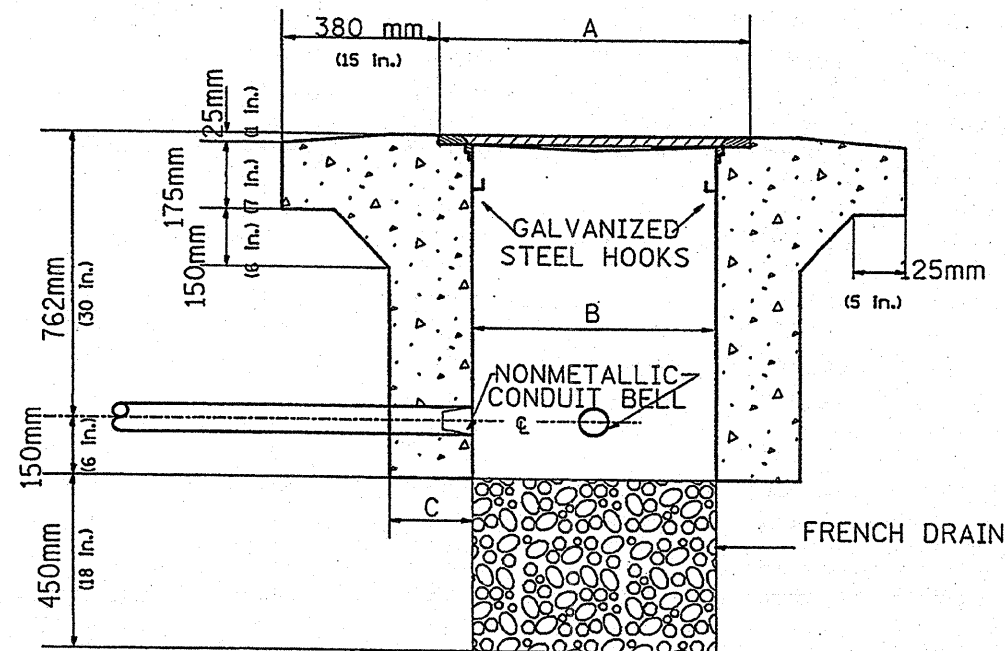


PLAN

HEAVY DUTY HANDHOLE MINIMUM DIMENSIONS (UNHINGED)

A	711 mm (28")
B	559 mm (22")
C	200 mm (8")

(FRAME AND COVER 118 Kg. (260 LBS.) MIN.)



ELEVATION

HEAVY DUTY HANDHOLE SPECIAL MINIMUM DIMENSIONS

A	800 mm (31.5")
B	762 mm (30")
C	250 mm (10")

(FRAME AND COVER 184 Kg. (405 LBS.))

PC CONCRETE - HEAVY DUTY SPECIAL

REVISIONS		ILLINOIS DEPARTMENT OF TRANSPORTATION TRAFFIC SYSTEMS CENTER
NAME	DATE	
R.L.	4-97	PC CONCRETE - HEAVY DUTY
		SCALE: VERT. NONE HORIZ.
		DATE 9-11-96
		DRAWN BY G.M. CHECKED BY R.L.

RD-TYPMET.DGN  
RF=

VI-40015