

BENCH MARK No. 202, ELEV. 187.854:

"x" on N.E. bolt of Light Standard on Entrance Ramp to E.B. I-90, Sta. 0+872.7, 38.1 m Lt.

EXISTING STRUCTURE: SN 016-0659

Built in 1952 as FA Route 173, Section 267-1213-15D. Structure consist of two units; a single span and two span continuous composite reinforced concrete deck on WF beams supported by multi-column piers and spill thru (south) and closed (north) abutments. 76.603 m back to back abutments, 19.810 m out to out deck. Deck to be removed and replaced using stage construction.

NOTE:

All dimensions are in millimeters (mm) except as noted.

Note:

Painting of the existing structural steel shall be done under a separate painting contract.

SCOPE OF WORK

1. Remove and replace existing deck utilizing Stage Construction.
2. Remove existing expansion bearings at north abutment and Pier 2 and replace with elastomeric bearings.
3. Remove and replace abutment backwalls & approach slabs.
4. Repair all substructure units & concrete slopewall at south abutment.

SHEET S1 OF S27

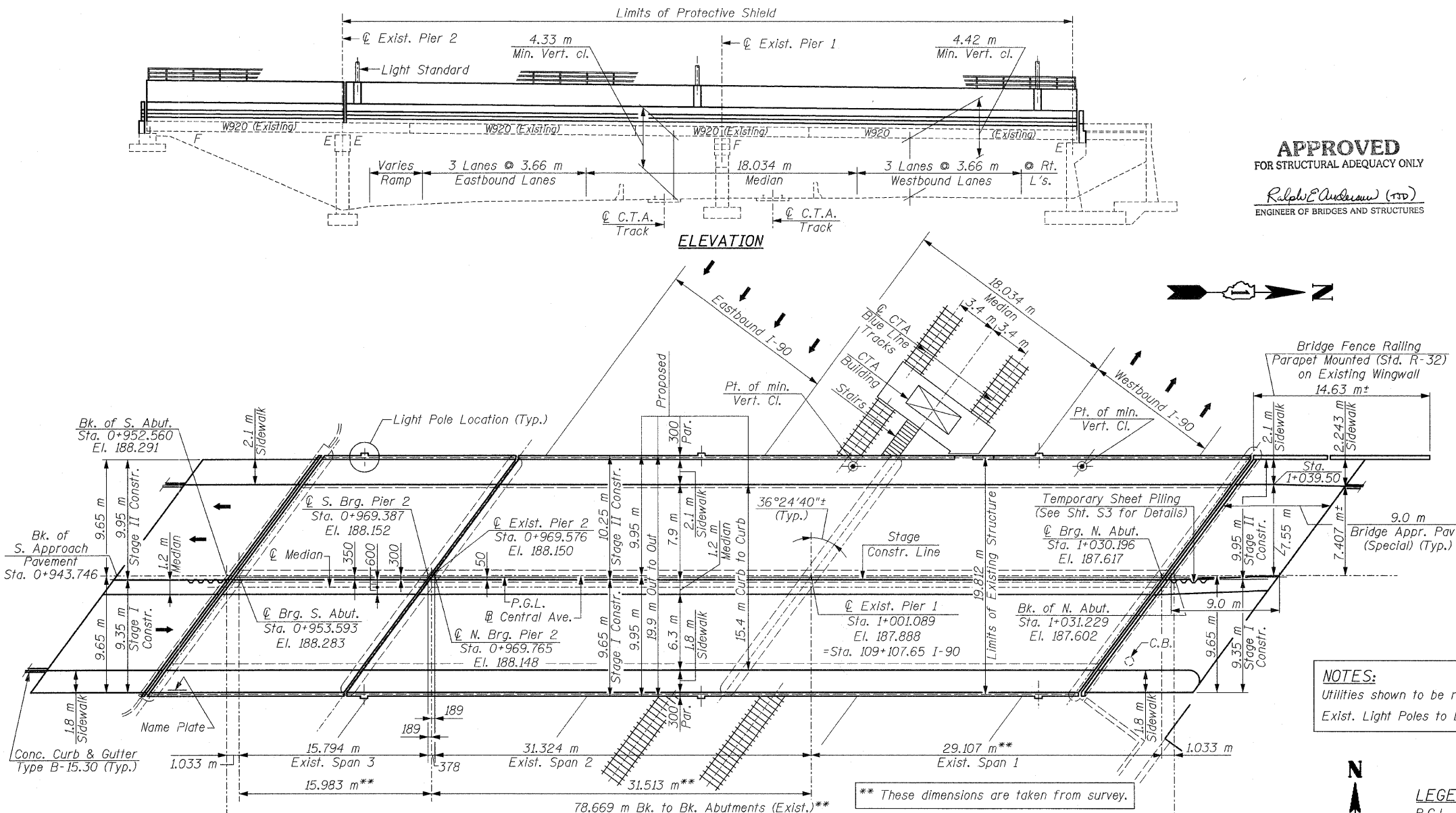
F.A.I. RTE.	SECTION	COUNTY	TOTAL SHEETS	SHEET NO.
90	1213B-1	COOK	94	48
STA.		TO STA.		
FED. ROAD DIST. NO. 1 ILLINOIS FED. AID PROJECT				

CONTRACT NO. 60640

INDEX OF SHEETS

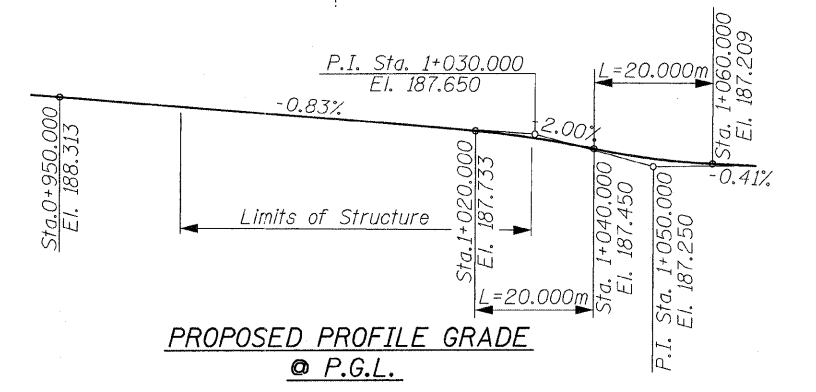
- S1 GENERAL PLAN & ELEVATION
- S2 GENERAL NOTES & TOTAL BILL OF MATERIAL
- S3 CONSTRUCTION STAGING & TEMPORARY SHEET PILING
- S4 TEMPORARY CONCRETE BARRIER FOR STAGE CONSTRUCTION
- S5 TOP OF SLAB ELEVATIONS-I
- S6 TOP OF SLAB ELEVATIONS-II
- S7 TOP OF SLAB ELEVATIONS-III
- S8 TOP OF SLAB ELEVATIONS-IV
- S9 TOP OF SLAB ELEVATIONS-V
- S10 APPROACH PAVEMENT ELEVATIONS
- S11 DECK PLAN
- S12 SIDEWALK PLANS & PARAPETS
- S13 DECK CROSS SECTION & SUPERSTRUCTURE DETAILS
- S14 BRIDGE FENCE RAILING PARAPET MOUNTED
- S15 PREFORMED JOINT STRIP SEAL
- S16 FRAMING PLAN & DETAILS
- S17 STRUCTURAL STEEL DETAILS
- S18 BEARING DETAILS AT PIER 2
- S19 BEARING DETAILS AT ABUTMENTS
- S20 ANCHOR BOLT DETAILS FOR BEARINGS
- S21 CONCRETE REMOVAL DETAILS
- S22 SOUTH ABUTMENT
- S23 NORTH ABUTMENT
- S24 ABUTMENT DETAILS
- S25 PIER 1 REPAIRS
- S26 PIER 2 REPAIRS
- S27 BAR SPLICER ASSEMBLY DETAILS

APPROVED
FOR STRUCTURAL ADEQUACY ONLY
Ralph Anderson (SE)
ENGINEER OF BRIDGES AND STRUCTURES

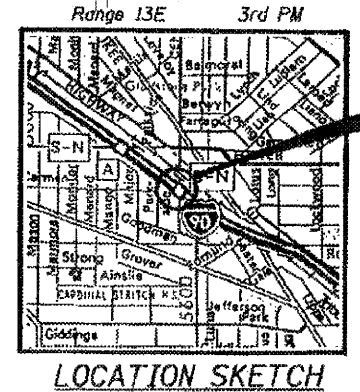


NOTES:
Utilities shown to be relocated by others.
Exist. Light Poles to be removed and replaced.

LEGEND:
P.G.L. = Profile Grade Line



PLAN
DESIGN SPECIFICATIONS
AASHTO 17th Edition-2002
LOADING MS18
Allow 1.2 kN/m² For future wearing surface.
DESIGN STRESSES-FIELD UNITS
EXISTING
f_s = 138 MPa (Reinforcement)
f_s = 124 MPa (Structural Steel)
f_c = 9.65 MPa
f_c = 5.50 MPa (Substructure)
n = 10
NEW CONSTRUCTION
f'_c = 24 MPa (Concrete)
f_y = 400 MPa (Reinforcement)
f_y = 250 MPa (Structural Steel)
(M20M Grade 250)
SEISMIC DATA
Seismic Performance Category (SPC) = A
Bedrock Acceleration Coefficient (A) = 0.038g
Site Coefficient (S) = 1.0



PROPOSED IMPROVEMENT

REVISIONS	
NAME	DATE

ILLINOIS DEPARTMENT OF TRANSPORTATION
GENERAL PLAN & ELEVATION
CENTRAL AVENUE (F.A.U. RTE. 2798)
OVER
INTERSTATE 90 (KENNEDY EXPWY.) & C.T.A.
F.A.I. RTE. 90 SECTION: 1213B-1
COOK COUNTY STATION 1+000.000
STRUCTURE NO. 016-0659
SCALE: NONE DRAWN BY: D.L./F.M.
DATE: JANUARY 16, 2009 CHECKED BY: B.M.S./J.C.M.
CHRISTIAN-ROGE & ASSOC., INC.
CHICAGO ILLINOIS