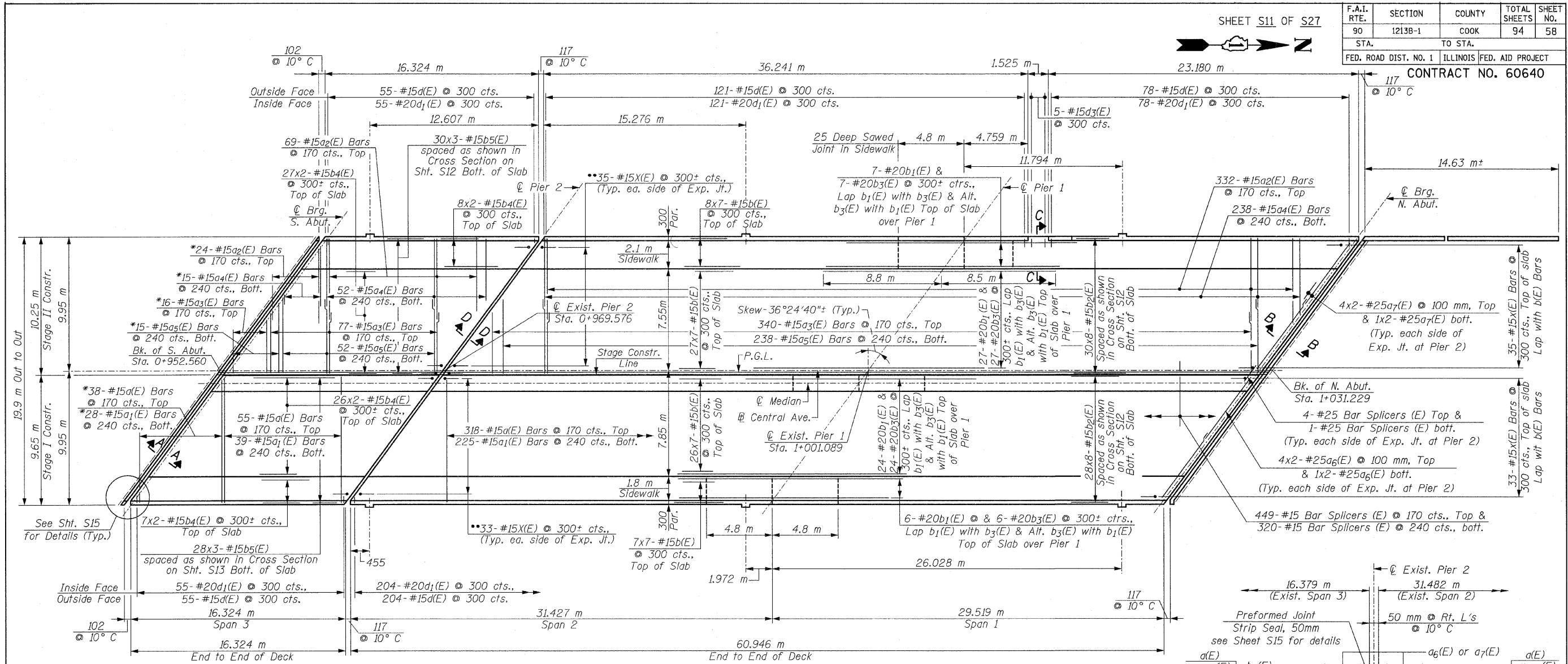


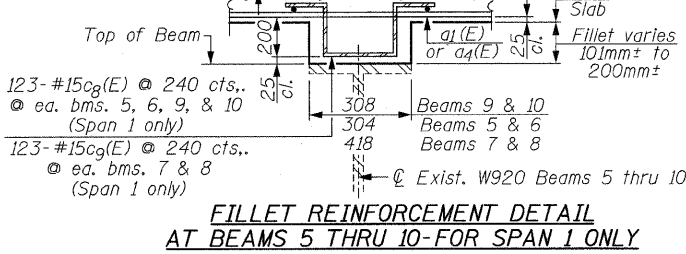
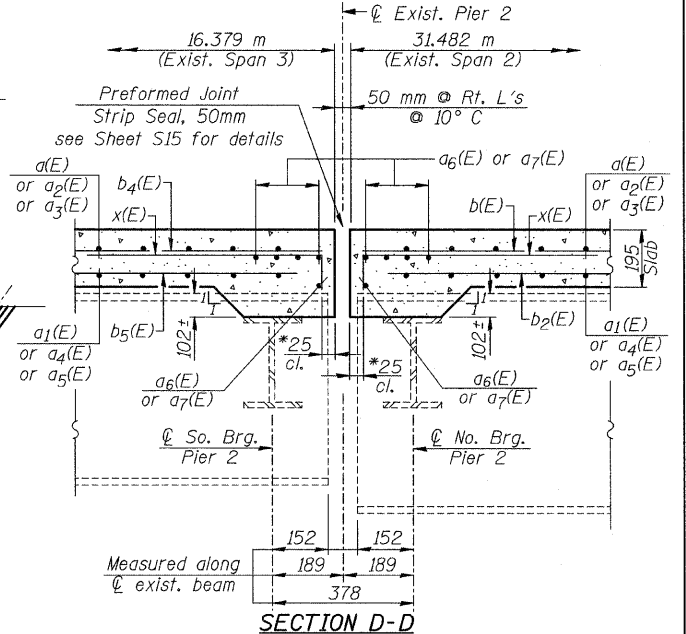
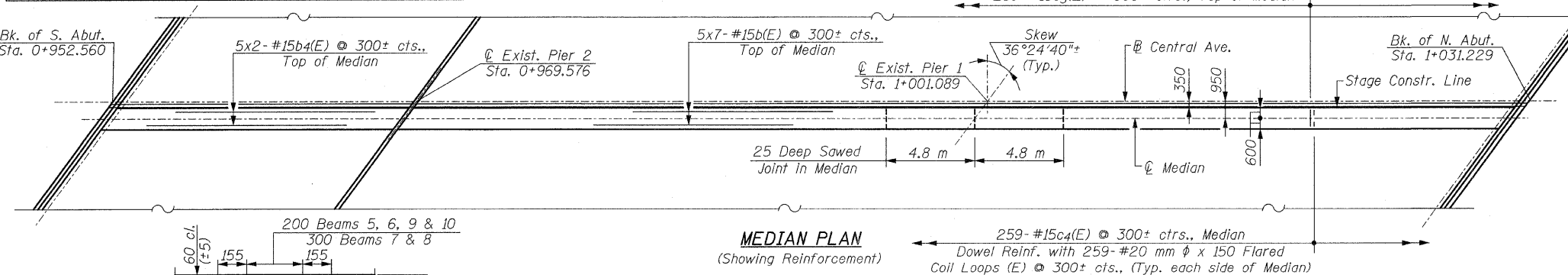
F.A.I. RTE.	SECTION	COUNTY	TOTAL SHEETS	SHEET NO.
90	1213B-1	COOK	94	58
STA.	TO STA.		FED. ROAD DIST. NO. 1 ILLINOIS FED. AID PROJECT	
			CONTRACT NO. 60640	



* Order a(E) thru a5(E) Bars full length for Span 3 & Span 2. Cut to fit skew and use remainder of Bars in opposite end of Span 3 & Span 1

** Lap with b4(E) Bars at Span 1
Lap with b(E) Bars at Span 2
(See Section D-D, this Sheet)

Min. Bar LAP:
#15 Bars = 510 (Unless Otherwise Shown)
#20 Bars = 790



NOTES:
See Sht. S13 for Section A-A, Section B-B & Section C-C, Superstructure Details and Bill of Material.
See Sht. S12 for Sidewalk and Parapet Reinforcement.
See Sht. S13 for Deck Cross Section.
See Sht. S15 for Expansion Joint Details.
Bars indicated thus 28x8-#15 etc., indicates 28 lines of Bars with 8 lengths per line.
Reinforcement Bars designated (E) shall be Epoxy Coated.

See Sheet S27 for Bar Splicer Details.
See Lighting Plans for the locations and details for Underpass Lighting. Provide Expansion Anchors, heavy duty as approved by the Engineer for Lumina Hanger Assembly. For details see Lighting Plans. Cost of Expansion Anchors included with Concrete Superstructure.
All dimensions are in millimeter (mm) except as noted.

REVISIONS	
NAME	DATE

ILLINOIS DEPARTMENT OF TRANSPORTATION

DECK PLAN
CENTRAL AVENUE (F.A.U. RTE. 2798)
OVER
INTERSTATE 90 (KENNEDY EXPWY.) & C.T.A.
F.A.I. RTE. 90 SECTION: 1213B-1
COOK COUNTY STATION 1+000.000
STRUCTURE NO. 016-0659

SCALE: NONE DRAWN BY: D.L./F.M.
DATE: JANUARY 16, 2009 CHECKED BY: B.N.S./J.C.M.

CHRISTIAN-ROGE & ASSOC., INC.
CHICAGO ILLINOIS