

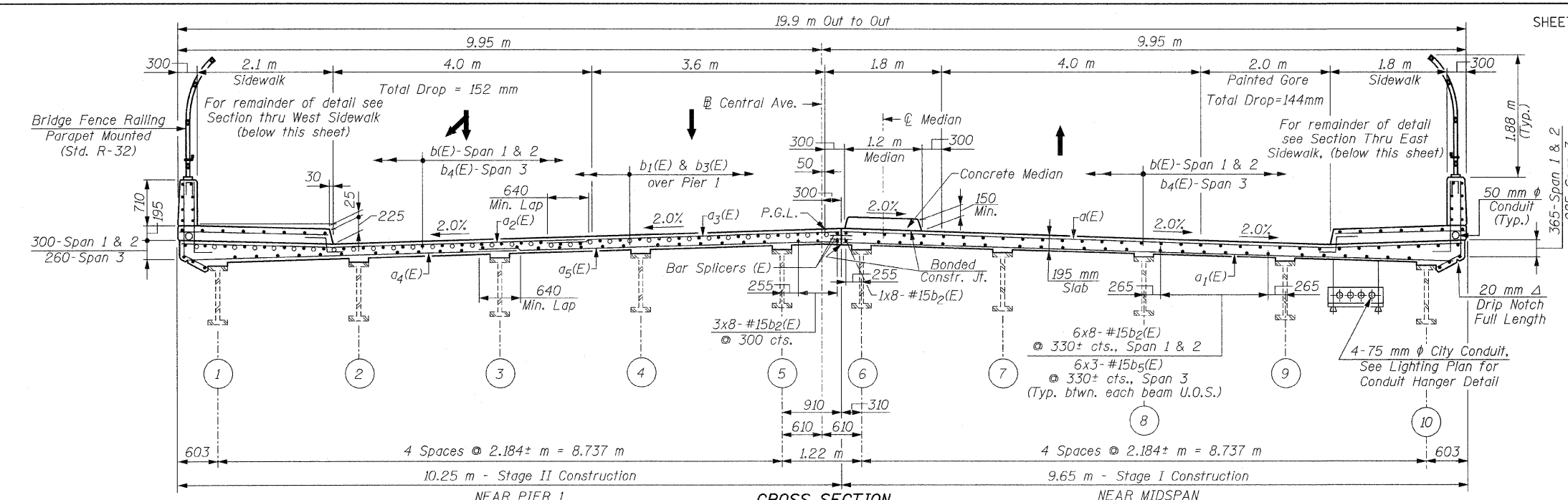
F.A.I. RTE.	SECTION	COUNTY	TOTAL SHEETS	SHEET NO.
90	1213B-1	COOK	94	60
STA. 1213B-1		TO STA. 1213B-1		
FED. ROAD DIST. NO. 1 ILLINOIS FED. AID PROJECT				

CONTRACT NO. 60640

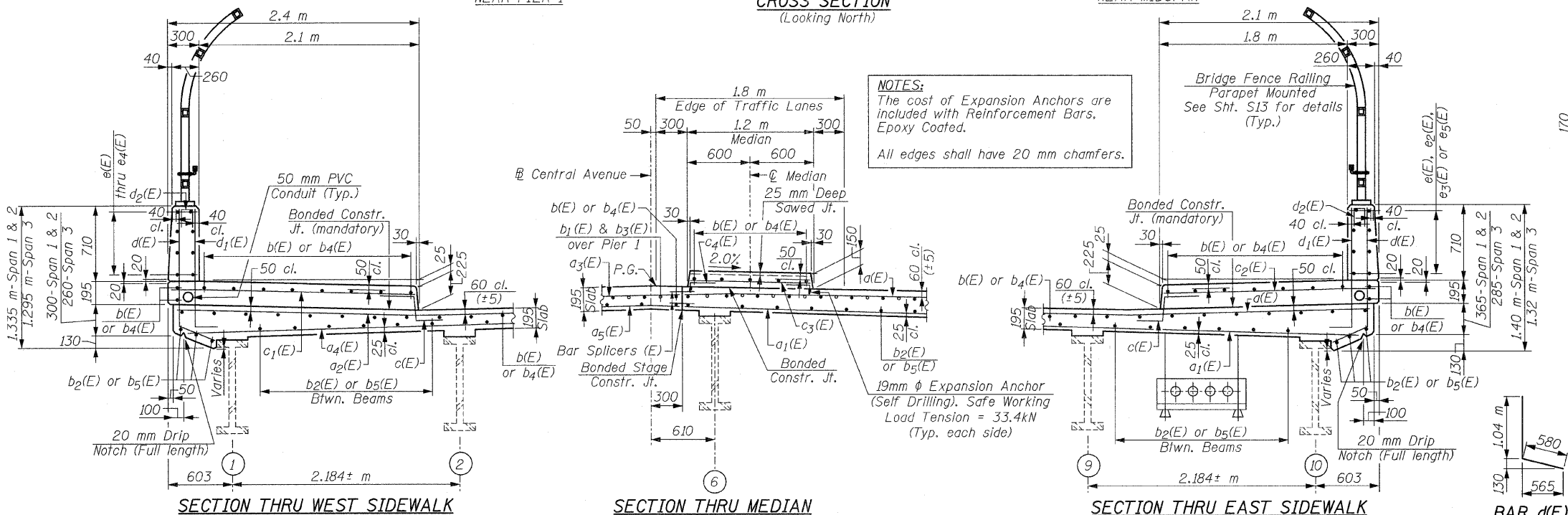
**SUPERSTRUCTURE BILL OF MATERIAL**

Bar	No.	Size	Length (m)	Shape
a(E)	449	#15	9.52	—
a <sub>1</sub> (E)	320	#15	9.24	—
a <sub>2</sub> (E)	449	#15	6.29	—
a <sub>3</sub> (E)	449	#15	4.47	—
a <sub>4</sub> (E)	320	#15	4.92	—
a <sub>5</sub> (E)	320	#15	5.56	—
a <sub>6</sub> (E)	30	#25	6.49	—
a <sub>7</sub> (E)	30	#25	6.86	—
b(E)	644	#15	9.14	—
b <sub>1</sub> (E)	64	#20	11.00	—
b <sub>2</sub> (E)	464	#15	8.06	—
b <sub>3</sub> (E)	64	#20	7.09	—
b <sub>4</sub> (E)	184	#15	8.40	—
b <sub>5</sub> (E)	174	#15	5.77	—
c(E)	518	#15	0.73	—
c <sub>1</sub> (E)	259	#15	2.30	—
c <sub>2</sub> (E)	259	#15	2.00	—
c <sub>3</sub> (E)	259	#15	1.08	—
c <sub>4</sub> (E)	518	#15	0.47	—
c <sub>8</sub> (E)	492	#15	0.91	—
c <sub>9</sub> (E)	246	#15	1.01	—
d(E)	513	#15	1.62	—
d <sub>1</sub> (E)	513	#20	1.32	—
d <sub>2</sub> (E)	132	#15	0.61	—
d <sub>3</sub> (E)	5	#15	1.30	—
d <sub>4</sub> (E)	18	#20	1.42	—
d <sub>5</sub> (E)	36	#20	2.64	—
e(E)	48	#15	5.38	—
e <sub>1</sub> (E)	24	#15	5.63	—
e <sub>2</sub> (E)	80	#15	5.25	—
e <sub>3</sub> (E)	24	#15	4.72	—
e <sub>4</sub> (E)	8	#15	4.68	—
e <sub>5</sub> (E)	40	#15	4.86	—
e <sub>8</sub> (E)	8	#15	6.08	—
e <sub>9</sub> (E)	16	#15	4.15	—
e <sub>10</sub> (E)	8	#15	5.96	—
x(E)	204	#15	1.28	—
Concrete Superstructure			m <sup>3</sup>	491
Reinforcement Bars, Epoxy Coated			kg	57,680
Bar Splicers			Each	784

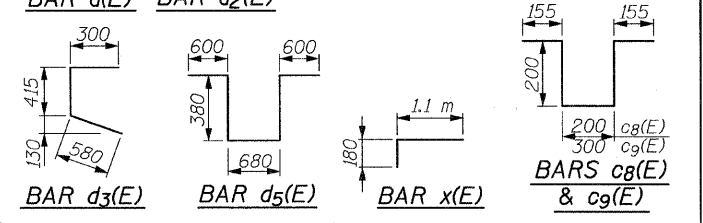
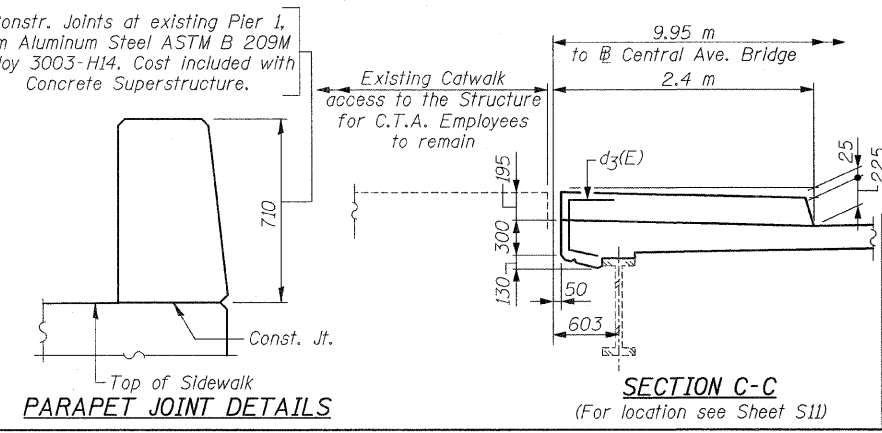
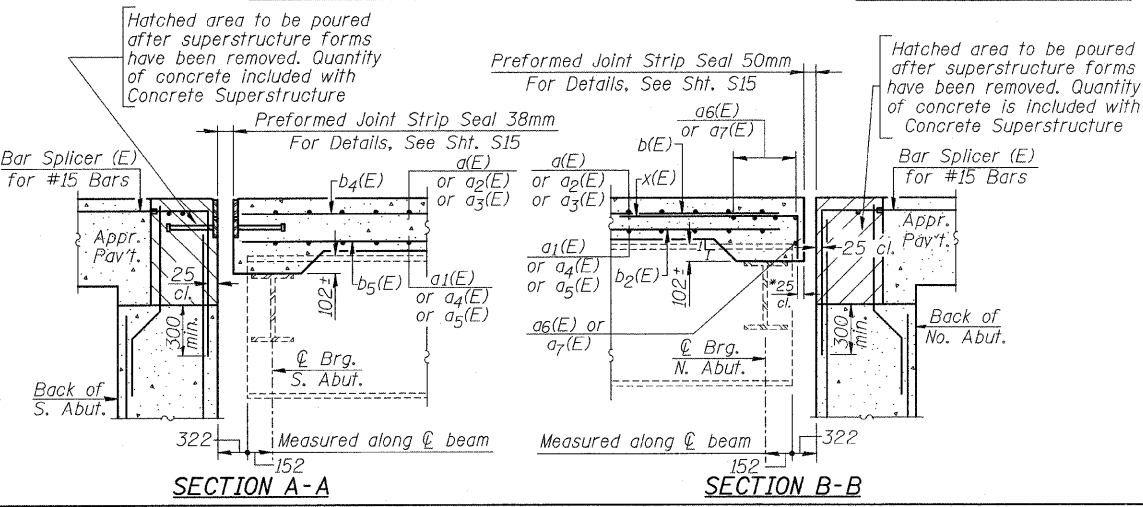
Bars indicated thus 3x8-#15 etc., indicates 3 lines of Bars with 8 lengths per line.



**CROSS SECTION (Looking North)**



**NOTES:**  
The cost of Expansion Anchors is included with Reinforcement Bars, Epoxy Coated.  
All edges shall have 20 mm chamfers.



REVISIONS	
NAME	DATE

ILLINOIS DEPARTMENT OF TRANSPORTATION  
DECK CROSS SECTION & SUPERSTRUCTURE DETAILS  
CENTRAL AVENUE (F.A.U. RTE. 2798) OVER INTERSTATE 90 (KENNEDY EXPWY.) & C.T.A. F.A.I. RTE. 90 SECTION: 1213B-1 COOK COUNTY STATION 1+000.000 STRUCTURE NO. 016-0659  
SCALE: NONE DRAWN BY: D.L./F.M. CHECKED BY: B.N.S./J.C.N.  
DATE: JANUARY 16, 2009  
CHRISTIAN-ROGE & ASSOC., INC. CHICAGO ILLINOIS