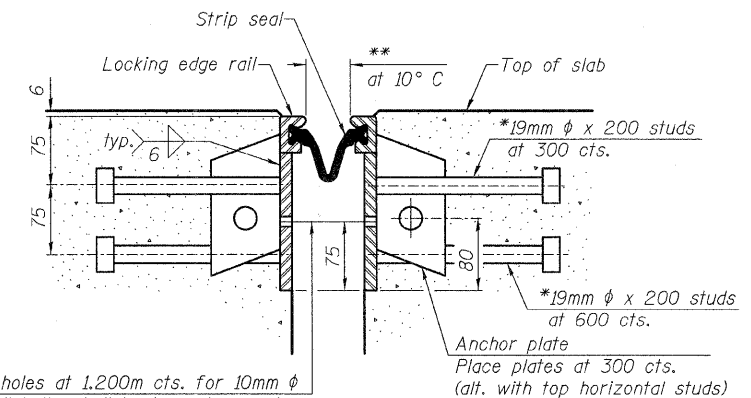
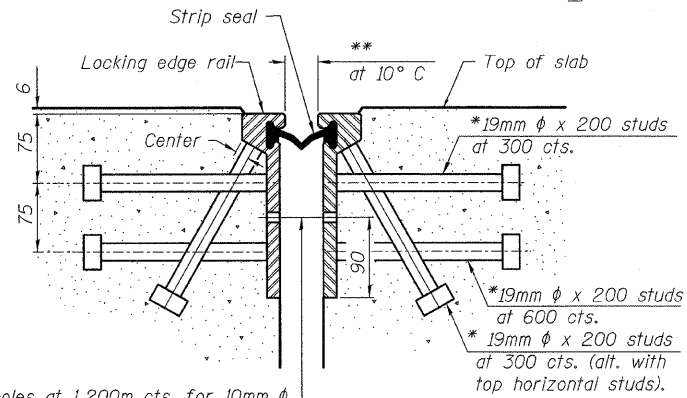


F.A.I. RTE.	SECTION	COUNTY	TOTAL SHEETS	SHEET NO.
90	1213B-1	COOK	94	62
STA.		TO STA.		
FED. ROAD DIST. NO. 1 ILLINOIS FED. AID PROJECT				

CONTRACT NO. 60640

*Granular or solid flux filled headed studs conforming to Article 1006.32 of the Std. Specs., automatically end welded.

**When joint is fixed, dimension is set at 38mm.
At S. Abut. (Fixed) 38mm
At N. Abut. & Pier 2 (Exp.) 50mm



11mm φ holes at 1,200m cts. for 10mm φ bolts. All bolts shall be burned, sawed, or chipped off flush with the plates after forms are removed, typ.

11mm φ holes at 1,200m cts. for 10mm φ bolts. All bolts shall be burned, sawed, or chipped off flush with the plates after forms are removed, typ.

Notes:

The strip seal shall be made continuous and shall have a minimum thickness of 6mm. The configuration of the strip seal shall match the configuration of the Locking Edge Rails. Open or "webbed" strip seal gland configurations are not permitted. The gland shall be sized for a maximum rated movement of 100mm.

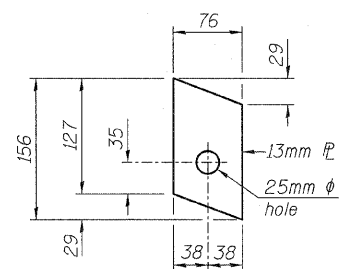
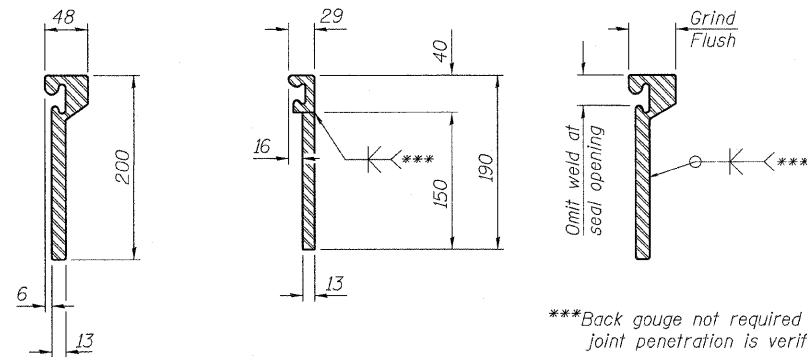
The height and thickness of the Locking Edge Rails shown are minimum dimensions. The actual configuration of the Locking Edge Rails and matching strip seal may vary from manufacturer to manufacturer. Flanged edge rails will not be allowed. Locking Edge Rails may be spliced at slope discontinuities and stage construction joints.

The manufacturer's recommended installation methods shall be followed. The joint opening and deck dimensions detailed on the superstructure are based on a rolled rail expansion joint. If the Contractor elects to use the welded rail expansion joint, the opening and deck dimensions shall be modified according to the dimensions detailed on this sheet. Required modifications shall be made at no additional cost to the State.

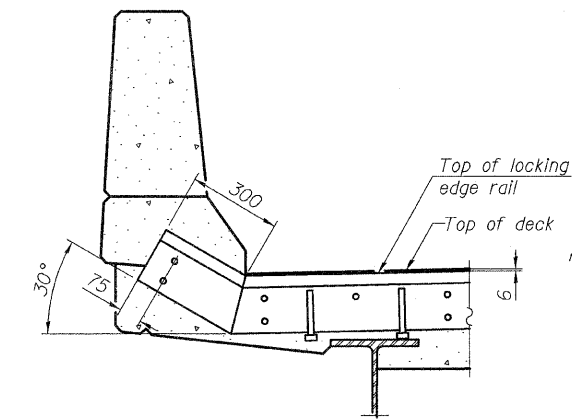
All steel components shall be galvanized after fabrication according to Article 520.03 of the Standard Specifications.

SECTION THRU ROLLED RAIL JOINT

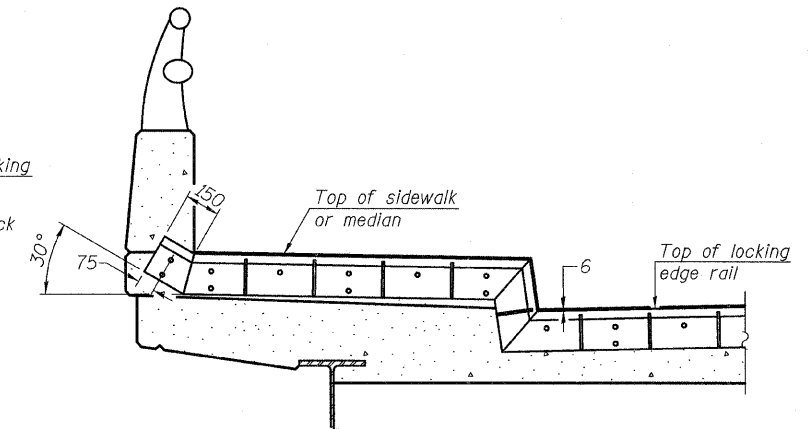
SECTION THRU WELDED RAIL JOINT



ANCHOR PL (for welded rail)



AT PARAPET



AT SIDEWALK OR MEDIAN

Shorter plates with a single row of studs at 300 cts., may be necessary on medians which are shallower than 230mm. See manufacturer's recommendation.

ROLLED (EXTRUDED) RAIL

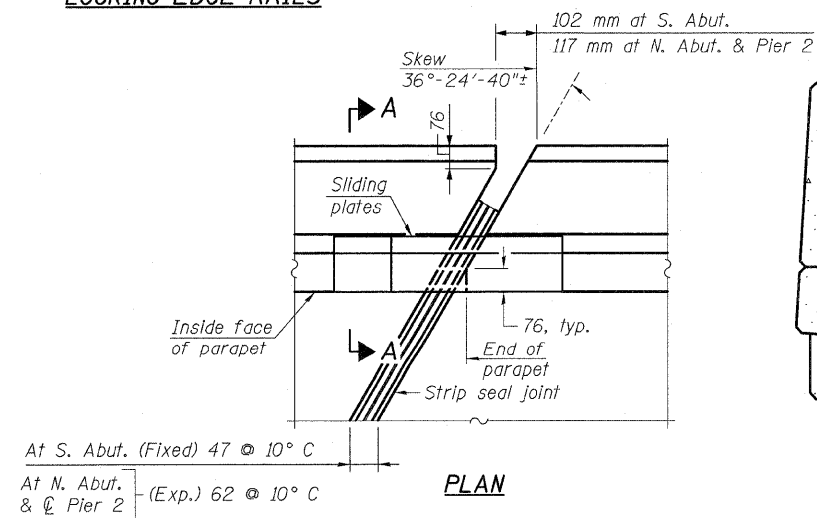
WELDED RAIL

LOCKING EDGE RAIL SPLICE

The inside of the locking edge rail groove shall be free of weld residue

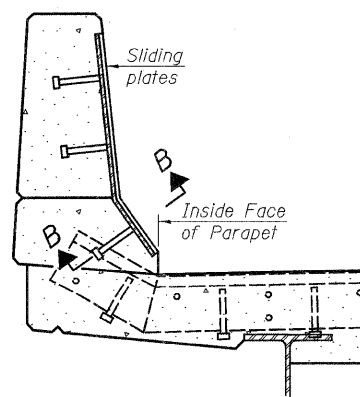
LOCKING EDGE RAILS

TYPICAL END TREATMENTS



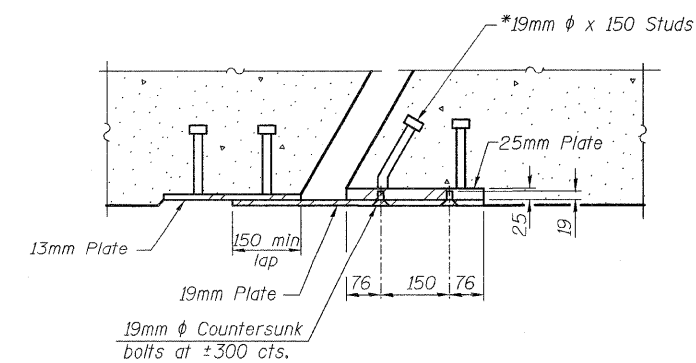
At S. Abut. (Fixed) 47 @ 10° C
At N. Abut. & Pier 2 (Exp.) 62 @ 10° C

PLAN



SECTION A-A

POINT BLOCK DETAILS (for skews > 30°)



SECTION B-B

BILL OF MATERIAL

Item	Unit	Total
Preformed Joint Strip Seal	m	75

REVISIONS	
NAME	DATE

ILLINOIS DEPARTMENT OF TRANSPORTATION
PREFORMED JOINT STRIP SEAL
 CENTRAL AVENUE (F.A.U. RTE. 2798)
 OVER
 INTERSTATE 90 (KENNEDY EXPWY.) & C.T.A.
 F.A.I. RTE. 90 SECTION: 1213B-1
 COOK COUNTY STATION 1+000.000
 STRUCTURE NO. 016-0659
 SCALE: NONE DRAWN BY: D.L./F.M.
 DATE: JANUARY 16, 2009 CHECKED BY: B.N.S./J.C.M.
CHRISTIAN-ROGE & ASSOC., INC.
 CHICAGO ILLINOIS