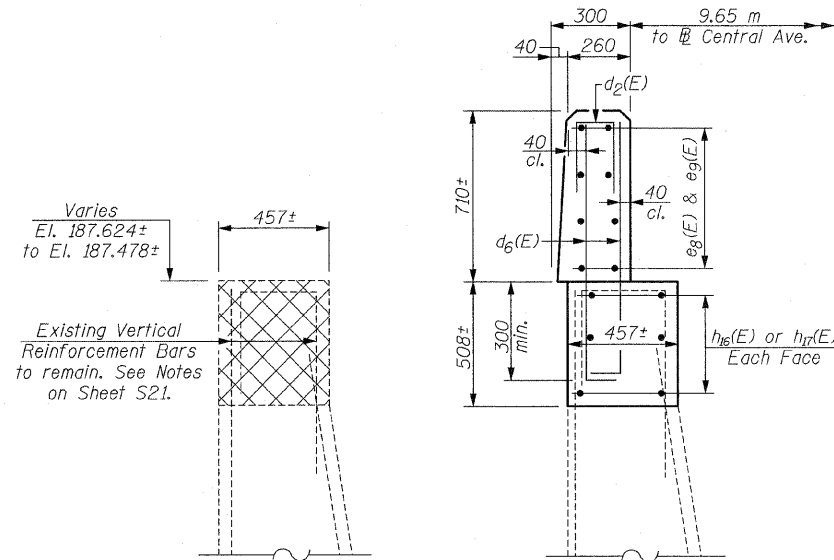
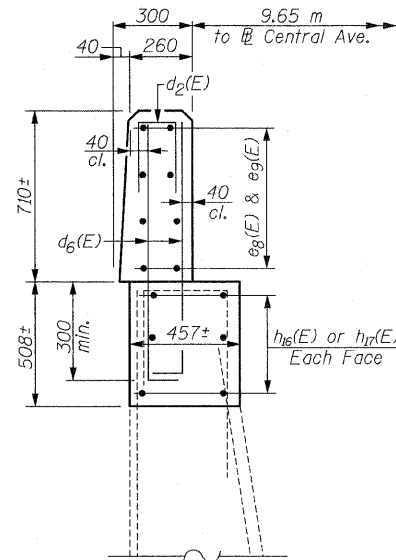


F.A.I. RTE.	SECTION	COUNTY	TOTAL SHEETS	SHEET NO.
90	1213B-1	COOK	94	71
STA.		TO STA.		
FED. ROAD DIST. NO. 1		ILLINOIS FED. AID PROJECT		

CONTRACT NO. 60640

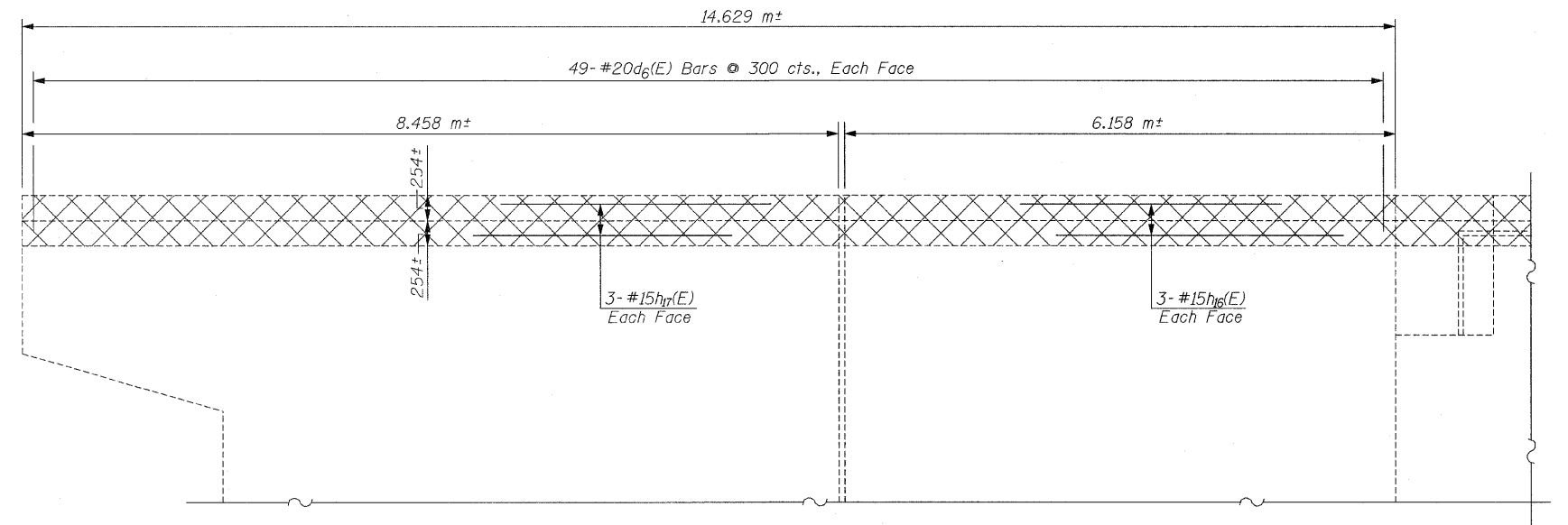


**EXISTING NORTHWEST WINGWALL SECTION**  
(Showing Concrete Removal)



**PROPOSED NORTHWEST WINGWALL SECTION**  
See Sheet S12 for Bars  $e_8(E)$ ,  $e_9(E)$  &  $d_2(E)$  at each Rail Post.

**NOTE:**  
Reinforcement Bars  $d_6(E)$ ,  $h_{16}(E)$  &  $h_{17}(E)$  are included with North Abutment, see Sht. S23



**ELEVATION OF EXISTING NORTHWEST WINGWALL**

**NOTES:**

Reinforcement Bars that are to be grouted into existing concrete shall be spaced at least 150 mm from the edge of existing concrete. Cost of hole drilling and Epoxy Grouting is included with "Reinforcement Bars, Epoxy Coated".

Epoxy Grout  $v_7(E)$  Bars in 230 mm min. deep drilled holes. According to Article 584 of The Standard Specifications.

Space reinforcement in cap to miss anchor bolts.

Verify existing seat elevations in the field prior to ordering materials.

For concrete removal, see Sheet S21.

See Sheet S27 for Bar Splicer (Coupler) Details at stage construction.

Cost of 13 mm joint filler is included with "Concrete Structures".

All dimensions are in millimeters (mm) unless otherwise noted.

Backfill with uncompacted Porous Granular Embankment, Special with a gradation of CA-5 or CA-7 by Bridge Contractor after Superstructure is in place. Limits shall be 300 mm from the end.

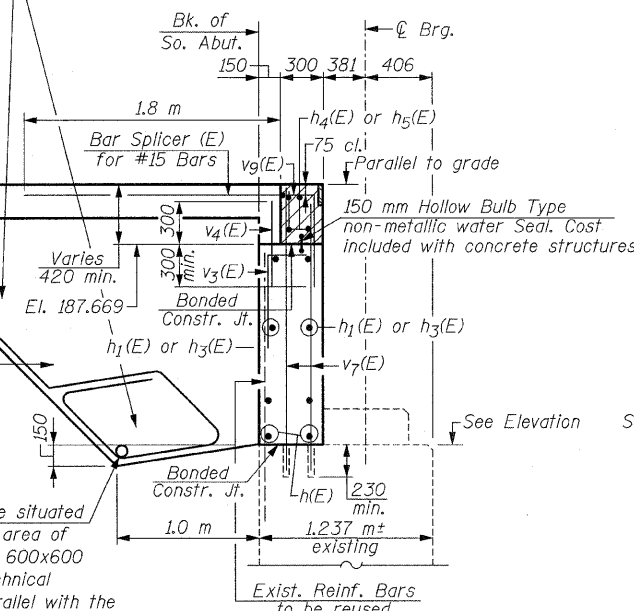
Excavation for placing Porous Granular Embankment, Special shall be paid for as "Structure Excavation"

Bridge Appr. Slab

Geotechnical Fabric for French Drains

Porous Granular Embankment, Special Between the End Posts of the Abutment

Perforated Drain Pipe shall be situated at the bottom of an approximate 600x600 area of Porous Granular Embankment, Special. The 600x600 area shall be wrapped completely in Geotechnical Fabric for French Drains. Extend pipe parallel with the cap until intersecting with the sideslopes. Drain Pipes shall be outletting through the Existing Wingwalls by Coring. The cost of the Coring will be included for payment in the Item Porous Granular Embankment (Special)



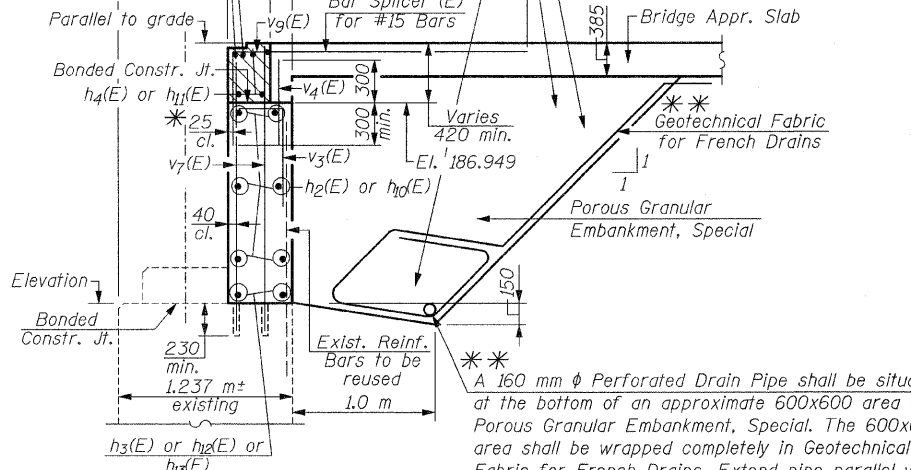
**PROPOSED SOUTH ABUTMENT MODIFICATION**  
(Dimensions © Rt. L's)

\* Place  $h_2(E)$  or  $h_{10}(E)$  Bars in back of Anchor Bolts as shown if required to maintain 25 mm cl. ( $\pm 0.3$  mm). Anchor Bolts should be tied to  $h_2(E)$  or  $h_{10}(E)$  Bars

\*\* Included in the cost of Porous Granular Embankment, Special

Backfill with uncompacted Porous Granular Embankment, Special with a gradation of CA-5 or CA-7 by Bridge Contractor after Superstructure is in place. Limits shall be 300 mm from the end.

Excavation for placing Porous Granular Embankment, Special shall be paid for as "Structure Excavation"



**PROPOSED NORTH ABUTMENT MODIFICATION**  
(Dimensions © Rt. L's)

REVISIONS	
NAME	DATE

ILLINOIS DEPARTMENT OF TRANSPORTATION

**ABUTMENT DETAILS**  
CENTRAL AVENUE (F.A.U. RTE. 2798)  
OVER  
INTERSTATE 90 (KENNEDY EXPWY.) & C.T.A.  
F.A.I. RTE. 90 SECTION: 1213B-1  
COOK COUNTY STATION 1+000.000  
STRUCTURE NO. 016-0659

SCALE: NONE DRAWN BY: D.L./F.M.  
DATE: JANUARY 16, 2009 CHECKED BY: B.N.S./J.C.M.

**CHRISTIAN-ROGE & ASSOC., INC.**  
CHICAGO ILLINOIS