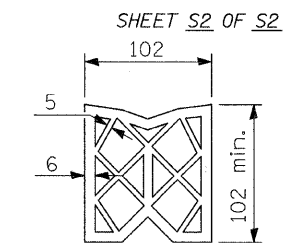
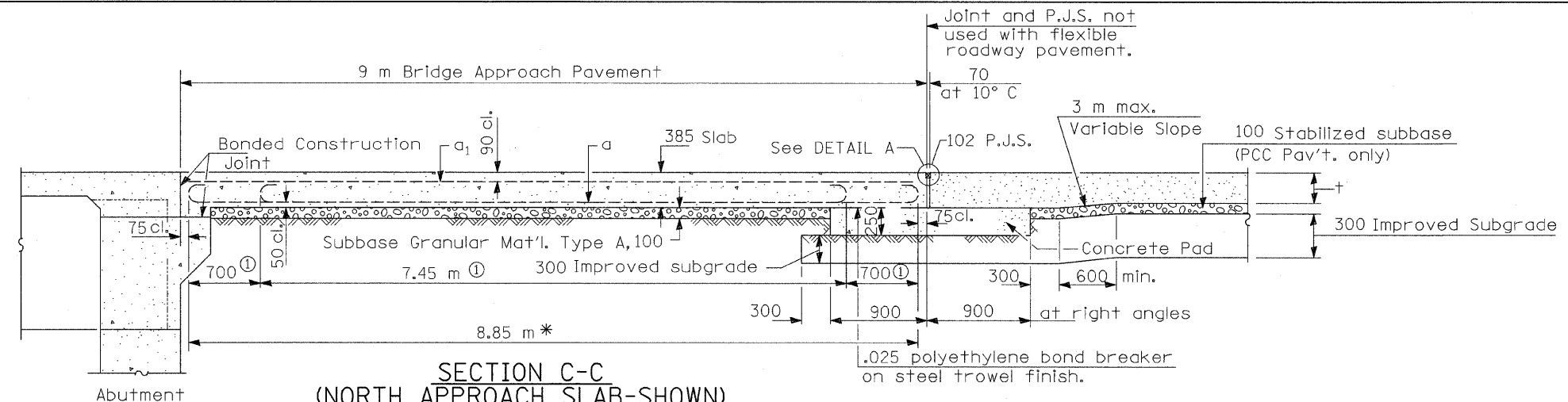
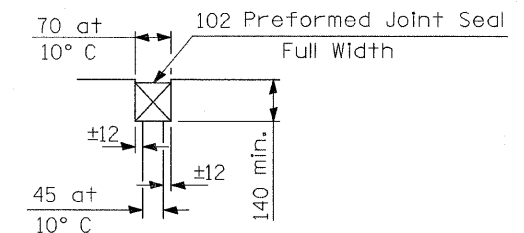


F.A.I. RTE.	SECTION	COUNTY	TOTAL SHEETS	SHEET NO.
90	1213B-1	COOK	94	76
STA.	TO STA.			
FED. ROAD DIST. NO. 1	ILLINOIS FED. AID PROJECT			
CONTRACT NO. 60640				

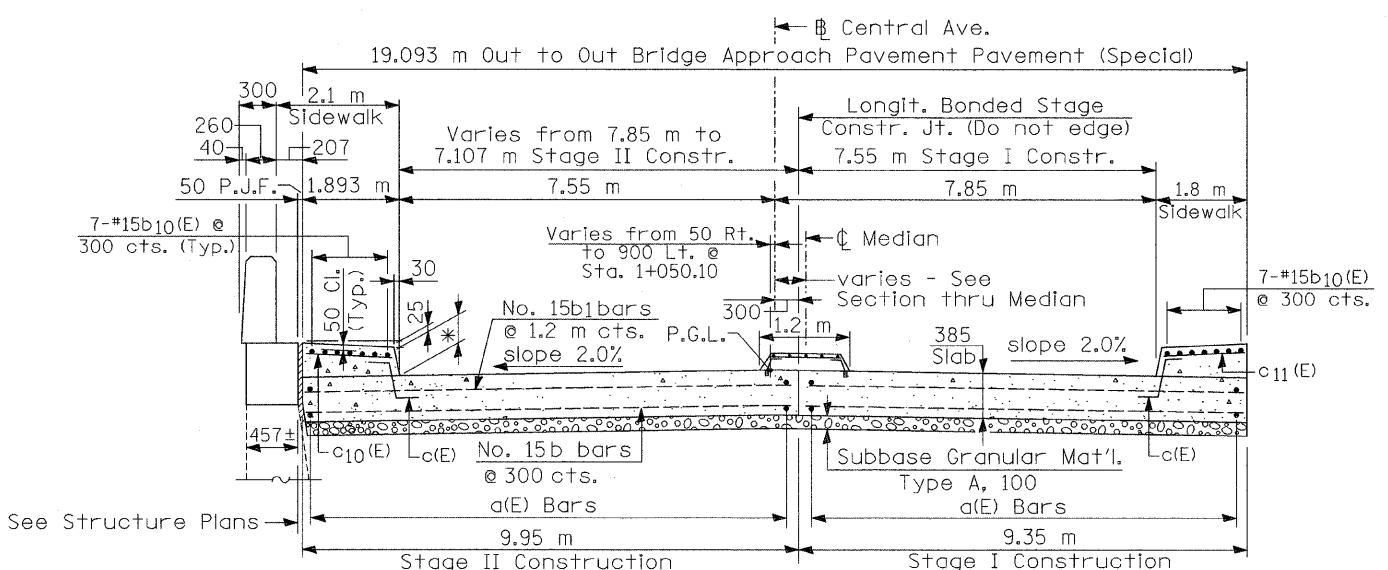


PREFORMED JOINT SEAL



DETAIL A

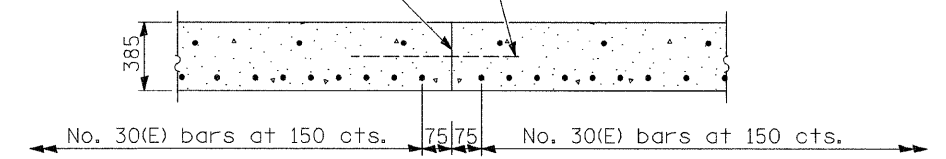
**SECTION C-C
(NORTH APPROACH SLAB-SHOWN)
(SOUTH APPROACH SLAB-OPP. HAND)**
① Stagger No. 30 a bars as shown on plan - full width



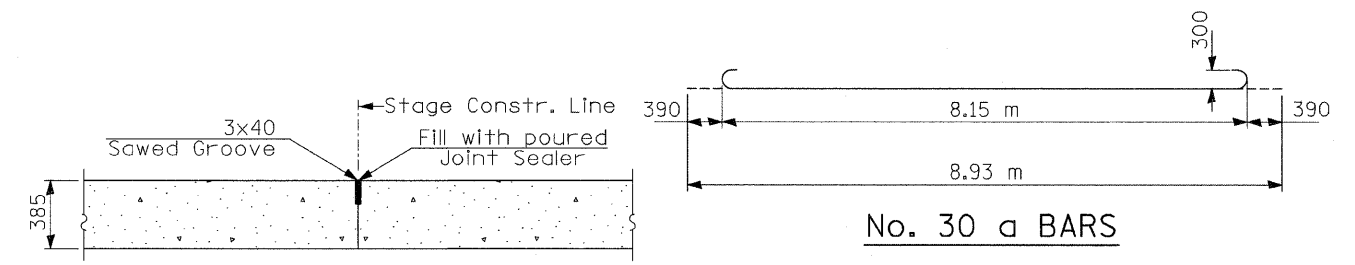
*Varies
225 (at Abutment)
195 (at PCC Connector)
(Typ.)

**SECTION D-D
(NORTH APPROACH SLAB)
(Looking North)**
(See Plan for Dimensions not shown)
All reinforcement bars shall be epoxy coated.

Longitudinal Construction Joint in accordance with details shown on Standard 420001.

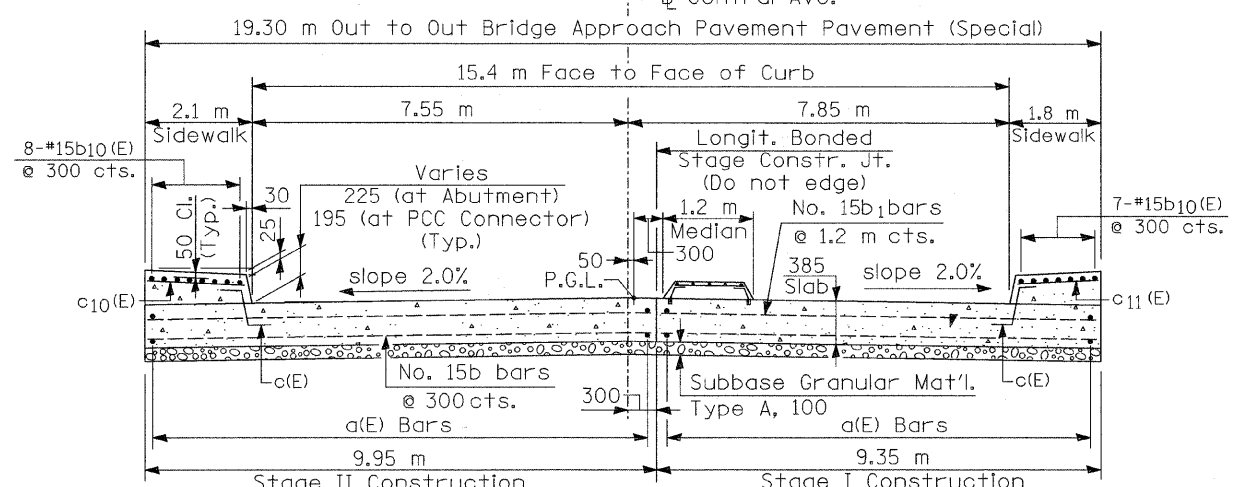


STAGE CONSTRUCTION JOINT

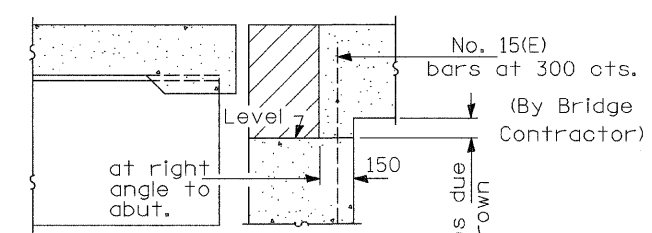


DETAIL "B"

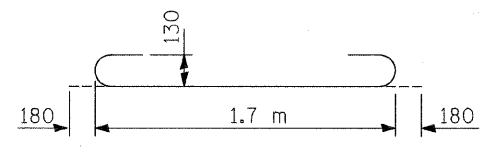
No. 30 a BARS



**SECTION D-D
(SOUTH APPROACH SLAB)
(Looking North)**
(See Plan for Dimensions not shown)
All reinforcement bars shall be epoxy coated.



**SECTION E-E
(Jointed Abutments)**



BAR a2

All dimensions are in millimeters unless otherwise shown.

REVISIONS	
NAME	DATE

ILLINOIS DEPARTMENT OF TRANSPORTATION
**BRIDGE APPROACH PAVEMENT (SPECIAL)
 CENTRAL AVENUE (F.A.U. RTE. 2798)
 OVER
 INTERSTATE 90 (KENNEDY EXPWY.) & C.T.A.
 F.A.I. RTE. 90 SECTION: 1213B-1
 COOK COUNTY STATION 1+000.000
 STRUCTURE NO. 016-0659**
 SCALE: DRAWN BY: D.L./F.M.
 DATE: NOVEMBER 28, 2007 CHECKED BY: B.N.S./J.C.N.
CHRISTIAN-ROGE & ASSOC., INC.
 CHICAGO ILLINOIS