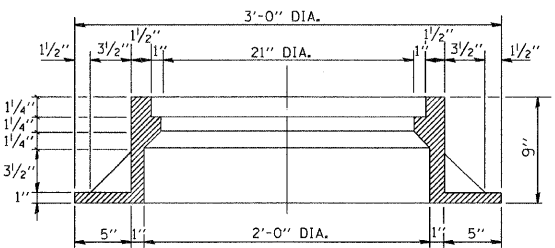


PLAN

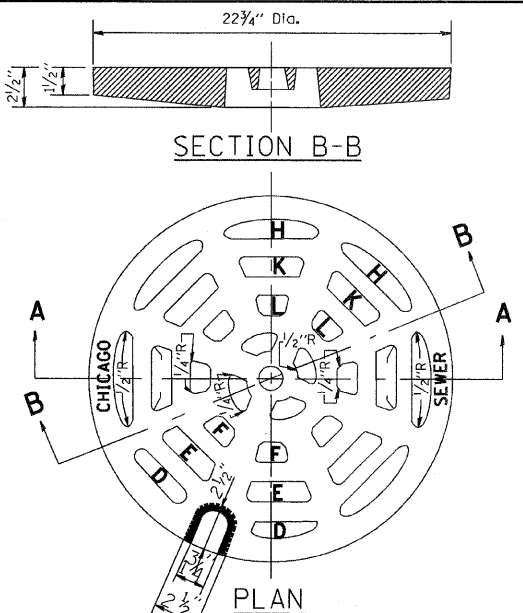


SECTION A-A

NOTE: METAL PLATES MUST BE FURNISHED FOR PERFORATED LIDS ON MANHOLES

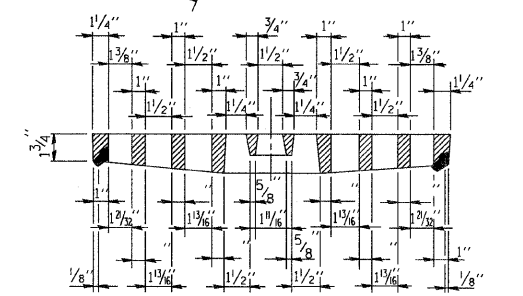
**CHICAGO STANDARD MANHOLE FRAME**

SCALE: 1/2"=1'-0"  
MATERIAL: CAST IRON



SECTION B-B

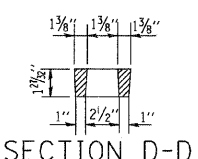
PLAN



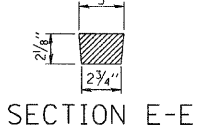
SECTION A-A

**PERFORATED LID FOR CATCH BASINS & MANHOLES**

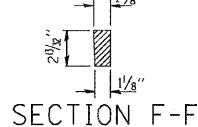
SCALE: 2"=1'-0"  
MATERIAL: CAST IRON



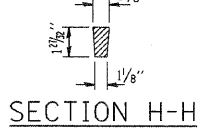
SECTION D-D



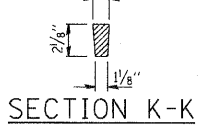
SECTION E-E



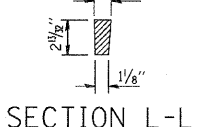
SECTION F-F



SECTION H-H



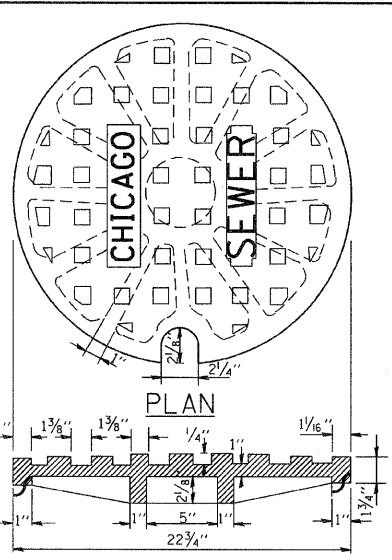
SECTION K-K



SECTION L-L

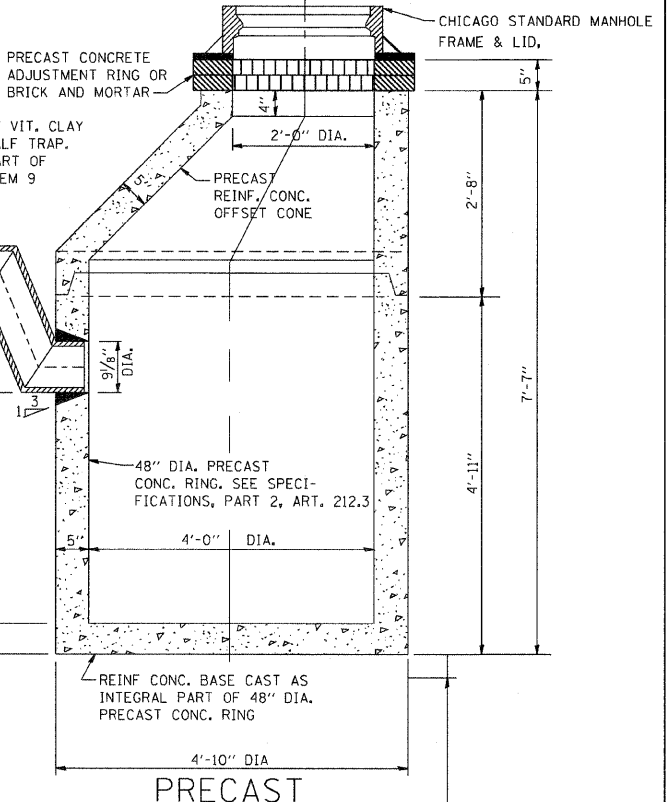
**SOLID LID FOR MANHOLES**

SCALE: NONE  
MATERIAL: CAST IRON



PLAN

SECTION

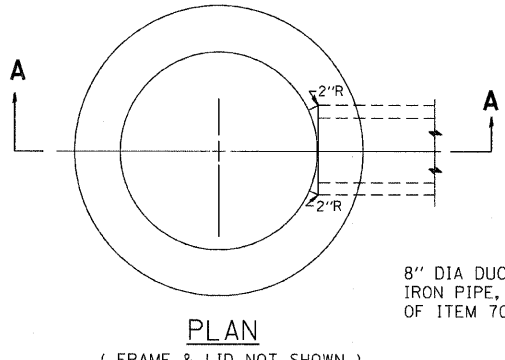


PRECAST

NOTE: 6" MINIMUM GRANULAR EMBEDMENT UNDER ALL CATCH BASINS

**STANDARD CATCH BASINS**

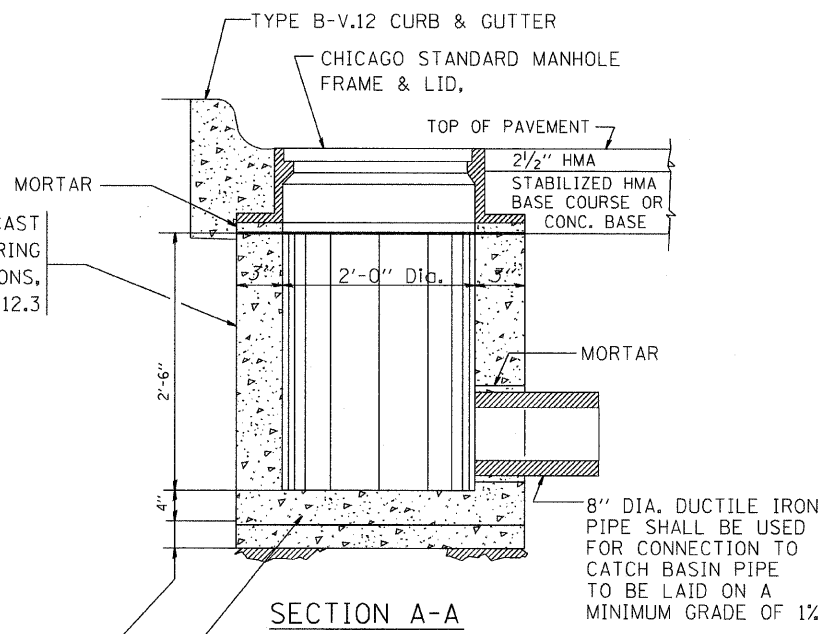
SCALE: 3/4"=1'-0"  
ITEM 9



PLAN

(FRAME & LID NOT SHOWN)

8" DIA DUCTILE IRON PIPE, PART OF ITEM 7G



SECTION A-A

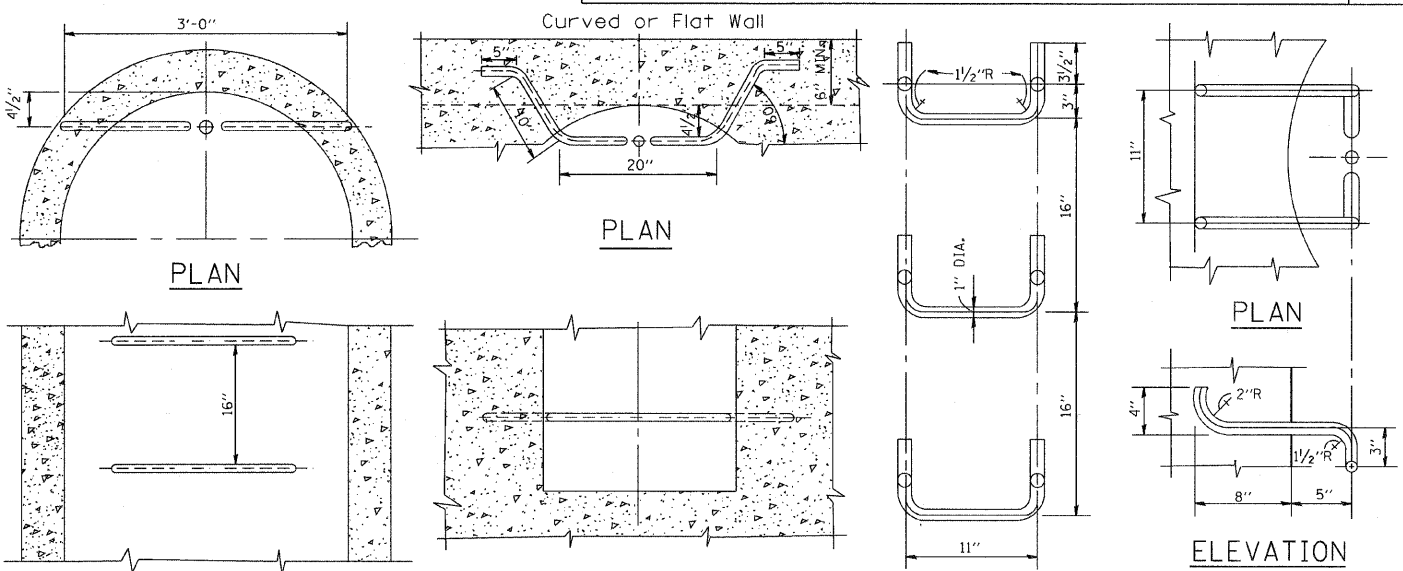
REIN. CONC. BASE CAST AS INTEGRAL PART OF 24" DIA. PRECAST CONC. RING  
6" MINIMUM GRANULAR EMBEDMENT UNDER ALL INLETS. FURNISHING AND INSTALLING GRANULAR EMBEDMENT SHALL BE INCLUDED IN THE UNIT PRICE BID FOR ITEM 12

**STANDARD INLETS**

SCALE 1"=1'-0"  
ITEM 12

THIS INLET DETAIL IS SOMETIMES REFERRED TO AS "CHICAGO STANDARD INLET, TYPE A"

NOTE: INLETS SHALL NOT BE CONSTRUCTED UNLESS IT IS IMPOSSIBLE TO CONSTRUCT A CATCH BASIN. THE CONTRACTOR SHALL HAVE THE DEPARTMENT OF SEWERS APPROVAL BEFORE CONSTRUCTING INLETS.



ELEVATION

TYPE X  
SCALE: 1"=1'-0"

ELEVATION

TYPE Y  
SCALE: 1"=1'-0"

SPACING

HANDHOLD-TYPE Z RUNG  
Scale: 1/2"=1'-0"

ELEVATION

**STANDARD LADDER RUNGS**

ALL LADDER RUNGS SHALL BE ALUMINUM OR GALVANIZED WROUGHT IRON AS SPECIFIED IN THE SPECIFICATIONS, PART 2, ARTICLE 214.2. RUNGS SHALL BE 1" DIAMETER OR OF A SHAPE HAVING AN EQUIVALENT CROSS-SECTIONAL AREA.

FILE NAME = W:\dststd\22x34\bd47.dgn

USER NAME = geglianobt	DESIGNED - M. GOMEZ	REVISED -
PLOT SCALE = 50.0000' / IN.	DRAWN -	REVISED -
PLOT DATE = 1/4/2008	CHECKED -	REVISED -
	DATE - 01-25-01	REVISED -

STATE OF ILLINOIS  
DEPARTMENT OF TRANSPORTATION

CITY OF CHICAGO  
CATCH BASIN, INLET AND MANHOLE DETAILS

F.A. RTE. 90	SECTION 1213 B-1	COUNTY COOK	TOTAL SHEETS 94	SHEET NO. 83
BD600-13 (BD47)		CONTRACT NO. 60640		
FED. ROAD DIST. NO. 1 [ILLINOIS] FED. AID PROJECT				

SCALE: NONE SHEET NO. 1 OF 1 SHEETS STA. 0+833 TO STA. 1+048