

F.A.P. RTE.	SECTION	COUNTY	TOTAL SHEETS	SHEET NO.
350	2005-060 RS	COOK	30	1
FED. ROAD DIST. NO. 1		ILLINOIS	CONTRACT NO. 60A50	

STATE OF ILLINOIS
DEPARTMENT OF TRANSPORTATION
DIVISION OF HIGHWAYS

**PROPOSED
HIGHWAY PLANS**

F.A.P. RTE. 350 / IL. RTE. 50 (CICERO AVENUE)
SECTION: 2005-060 RS
NORTH OF IL. 19 (IRVING PARK ROAD)
TO I-94 (EDENS EXPRESSWAY)
RESURFACING (3P)
PROJECT: *ESP-0350(029)*
COUNTY: COOK
C-91-063-06
JEFFERSON TOWNSHIP
R. 13 E.

D-91-063-06



LOCATION OF SECTION INDICATED THIS: - - -

STATE OF ILLINOIS
DEPARTMENT OF TRANSPORTATION
DIVISION OF HIGHWAYS

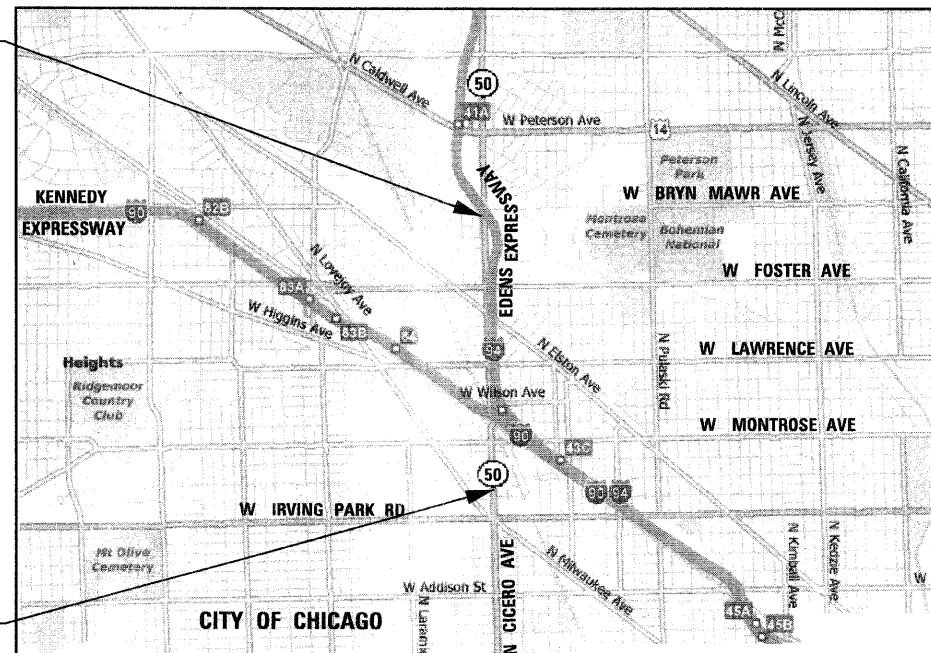
SUBMITTED JANUARY 13, 20 09
Diana M. O'Keefe DEPUTY DIRECTOR OF HIGHWAYS, REGION ONE ENGINEER
March 13, 20 09
Charles G. Ingersoll ENGINEER OF DESIGN AND ENVIRONMENT
March 13, 20 09
Christine M. Reed DIRECTOR OF HIGHWAYS, CHIEF ENGINEER

FOR INDEX OF SHEETS, SEE SHEET NO. 2

DESIGN DESIGNATION:
SPEED LIMIT : 30 M.P.H.
2007 ADT = 29,700

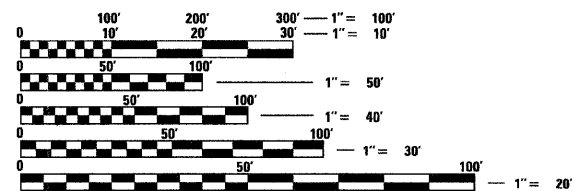
PROJECT LOCATED IN THE
CITY OF CHICAGO

- PROJECT ENDS
STA. 118 + 57
- PAVING OMISSION
STA. 95 + 30.0 TO
STA. 96 + 95.0
- PAVING OMISSION
STA. 86 + 43.0 TO
STA. 88 + 05.0
- PAVING OMISSION
STA. 72 + 10.0 TO
STA. 73 + 40.0
- PAVING OMISSION
STA. 50 + 48.9 TO
STA. 52 + 66.9
- PROJECT BEGINS
STA. 22 + 20



N
T. 40 N.

GROSS LENGTH OF PROJECT = 9,591 FEET = 1.817 MILES
NET LENGTH OF PROJECT = 8,916 FEET = 1.689 MILES



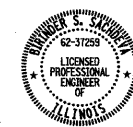
FULL SIZE PLANS HAVE BEEN PREPARED USING STANDARD ENGINEERING SCALES. REDUCED SIZED PLANS WILL NOT CONFORM TO STANDARD SCALES. IN MAKING MEASUREMENTS ON REDUCED PLANS, THE ABOVE SCALES MAY BE USED.

J.U.L.I.E.
JOINT UTILITY LOCATING INFORMATION FOR EXCAVATORS
1-800-892-0123 OR 811
AND
C.U.A.N.
CHICAGO UTILITY ALERT NETWORK
1-312-744-7000

CONTRACT NO. 60A50

DISTRICT ONE - PLAN PREP ENGINEER: KEN ENG (847) 705-4247

DESIGN SECTION ENGINEER :
CHRISTIAN-ROGE & ASSOCIATES, INC.
ENGINEERS - PLANNERS - SURVEYORS
211 W. WACKER DRIVE CHICAGO, IL. 60606
TELEPHONE: 312-372-2023



Birinder S. Sachdeva January 7, 2009
BIRINDER S. SACHDEVA, P.E. DATE
EXPIRES: 11-30-2009

**PRINTED BY THE AUTHORITY
OF THE STATE OF ILLINOIS**