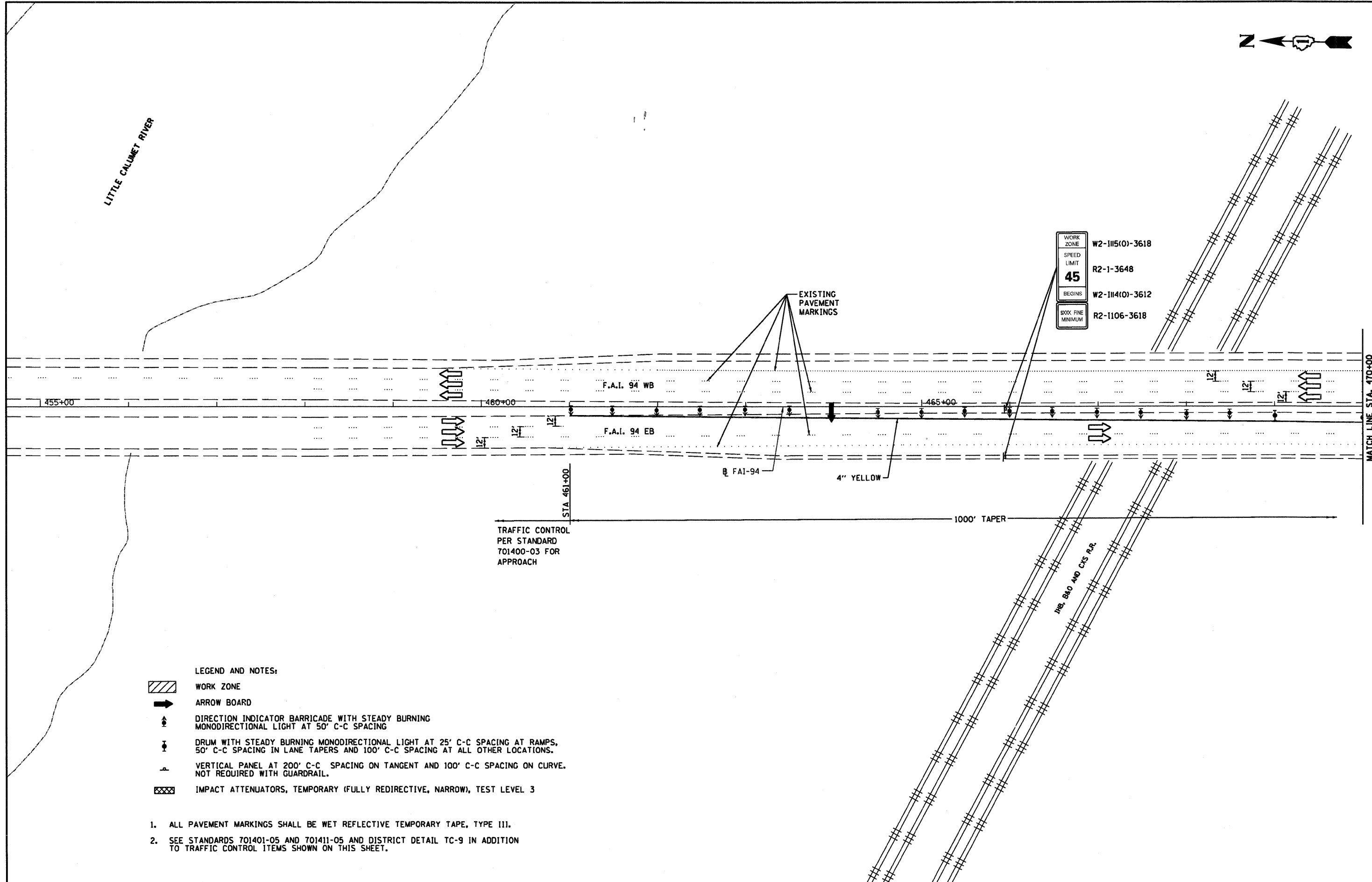




LITTLE CALUMET RIVER



WORK ZONE	W2-1115(0)-3618
SPEED LIMIT	R2-1-3648
45	
BEGINS	W2-1114(0)-3612
5000 FINE MINIMUM	R2-1106-3618

- LEGEND AND NOTES:**
- WORK ZONE
  - ARROW BOARD
  - DIRECTION INDICATOR BARRICADE WITH STEADY BURNING MONODIRECTIONAL LIGHT AT 50' C-C SPACING
  - DRUM WITH STEADY BURNING MONODIRECTIONAL LIGHT AT 25' C-C SPACING AT RAMP, 50' C-C SPACING IN LANE TAPERS AND 100' C-C SPACING AT ALL OTHER LOCATIONS.
  - VERTICAL PANEL AT 200' C-C SPACING ON TANGENT AND 100' C-C SPACING ON CURVE. NOT REQUIRED WITH GUARDRAIL.
  - IMPACT ATTENUATORS, TEMPORARY (FULLY REDIRECTIVE, NARROW), TEST LEVEL 3

1. ALL PAVEMENT MARKINGS SHALL BE WET REFLECTIVE TEMPORARY TAPE, TYPE III.
2. SEE STANDARDS 701401-05 AND 701411-05 AND DISTRICT DETAIL TC-9 IN ADDITION TO TRAFFIC CONTROL ITEMS SHOWN ON THIS SHEET.

FILE NAME = D160021-034-STAGE_PLAN.STG1.dgn	USER NAME = dwozniarski	DESIGNED - DRAWN - DMW	REVISED - REVISED -
PLOT SCALE = 100.00' / IN.	CHECKED -	REVISED -	REVISED -
PLOT DATE = 2/5/2009	DATE - 2/5/2009	REVISED -	REVISED -

**STATE OF ILLINOIS  
DEPARTMENT OF TRANSPORTATION**

**BISHOP FORD EXPRESSWAY (I-94)  
SUGGESTED MAINTENANCE OF TRAFFIC - STAGE I PLAN**

SCALE: 1" = 50'    SHEET NO. 6 OF 24 SHEETS    STA. 455+00 TO STA. 470+00

F.A.I. RTE.	SECTION	COUNTY	TOTAL SHEETS	SHEET NO.
94	(0405,ETC,42-7&0707RS-11)	COOK	133	34
FED. ROAD DIST. NO. ILLINOIS FED. AID PROJECT			CONTRACT NO. 60021	