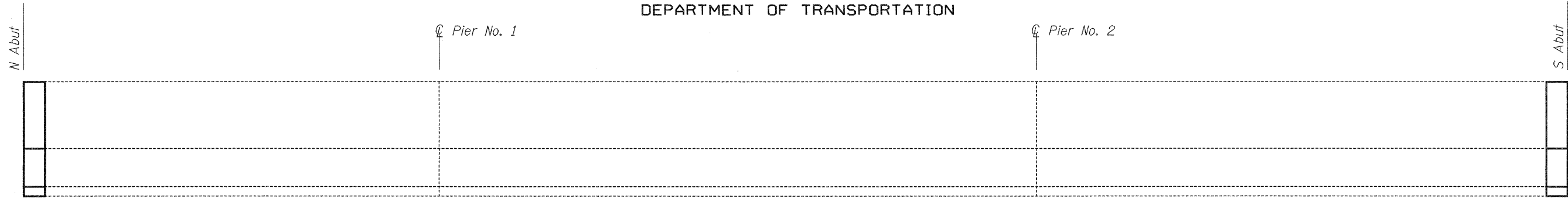
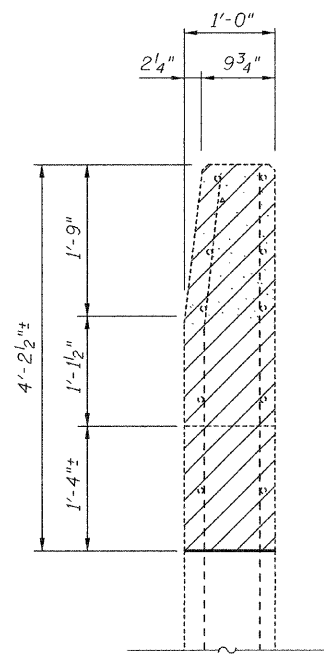


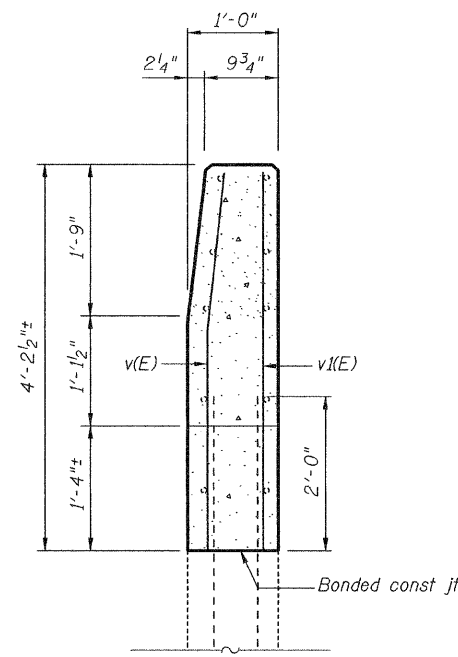
STATE OF ILLINOIS
DEPARTMENT OF TRANSPORTATION



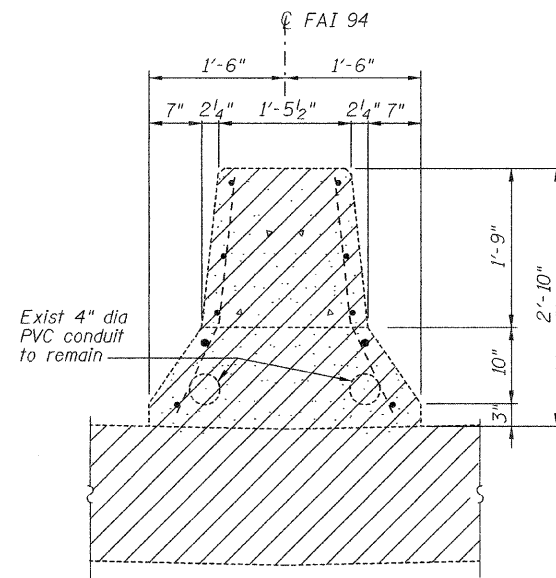
INSIDE ELEVATION OF EAST PARAPET



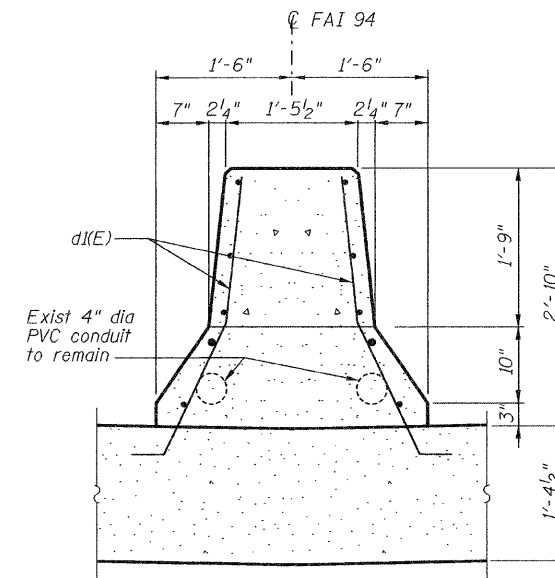
SECTION J-J



SECTION K-K



MEDIAN PARAPET
SECTION L-L

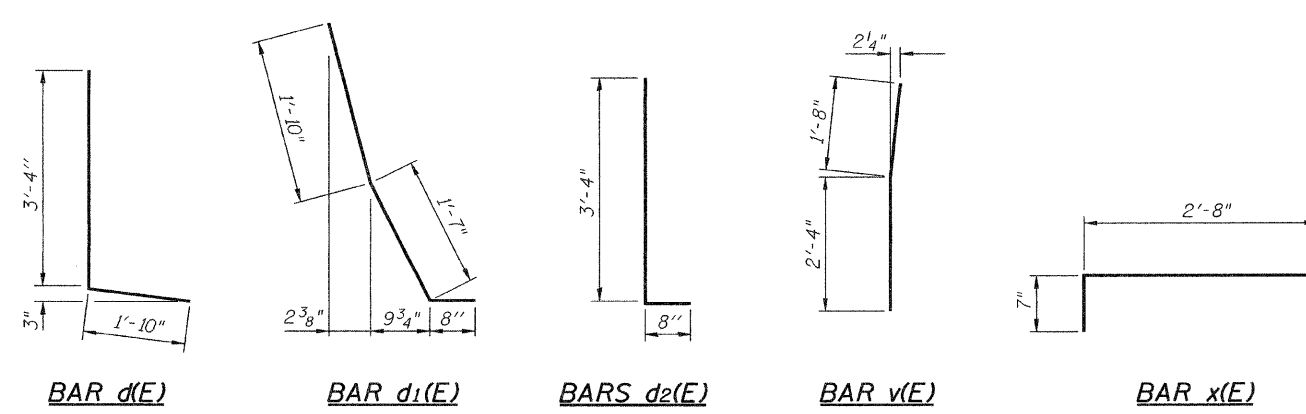


MEDIAN PARAPET
SECTION M-M

SUPERSTRUCTURE
BILL OF MATERIAL

Bar	No.	Size	Length	Shape
a(E)	12	#6	32'-4"	—
a1(E)	52	#5	32'-4"	—
a2(E)	12	#6	27'-7"	—
a3(E)	52	#5	27'-7"	—
d(E)	20	#4	5'-2"	L
d1(E)	48	#5	4'-1"	—
d2(E)	20	#4	4'-0"	—
v(E)	8	#6	4'-0"	—
v1(E)	8	#6	4'-1"	—
x(E)	232	#5	3'-3"	—
Concrete Removal			Cu Yd	40.0
Concrete Superstructure			Cu Yd	40.0
Protective Coat			Sq Yd	110
Reinforcement Bars, Epoxy Coated			Pound	6390
Silicone Joint Sealer, 2"			Foot	275

Reinforcement bars designated (E) shall be epoxy coated.



EXPANSION JOINT REMOVAL AND
REPLACEMENT DETAILS 2
BISHOP FORD EXPRESSWAY (I-94)
LITTLE CALUMET RIVER
COOK COUNTY
STATION
STRUCTURE NUMBER 016-0163

DESIGNED -
CHECKED -
DRAWN -
CHECKED -

HOMER L. CHASTAIN & ASSOCIATES, LLP
CONSULTING ENGINEERS
DECATUR (217) 422-8544
CHICAGO (773) 714-0050
ROCKFORD (815) 489-0050
184-001397

SHEET NO. 8 OF 17 SHEETS	F.A.I. RTE.	SECTION	COUNTY	TOTAL SHEETS	SHEET NO.
	94	(0405,ETC,42-7&0707)RS-11	COOK	133	94
BISHOP FORD EXPRESSWAY (I-94)			CONTRACT NO. 60D21		
FED. ROAD DIST. NO.		ILLINOIS FED. AID PROJECT			