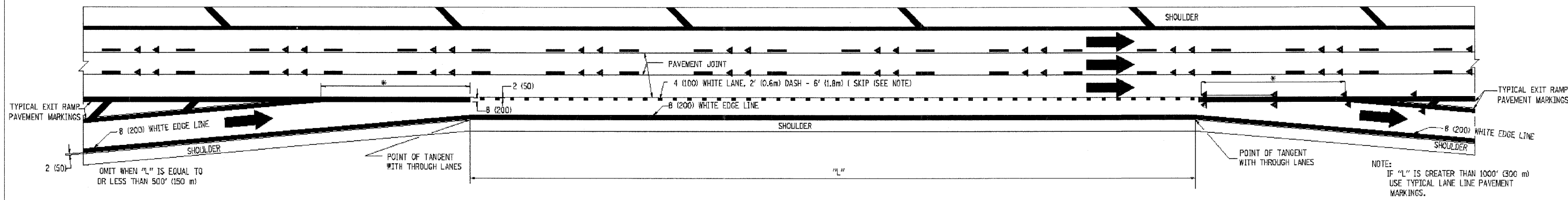
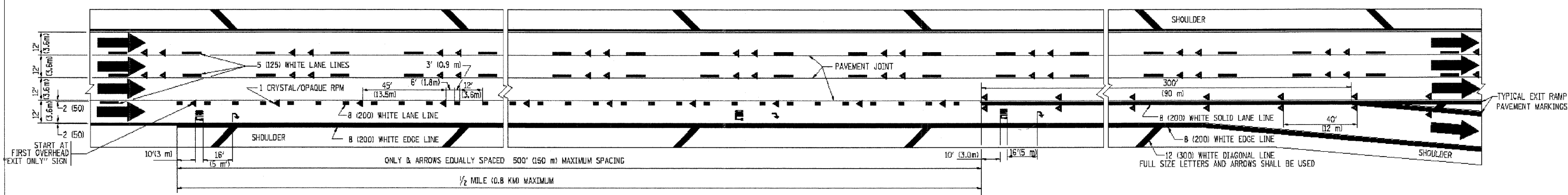


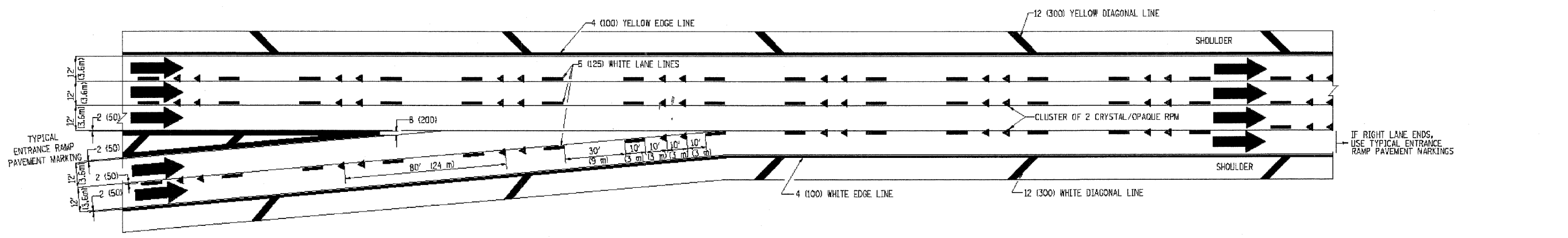
CONTRACT NO. 60021				
F. A. I. RTE.	SECTION	COUNTY	TOTAL SHEETS	SHEET NO.
94		COOK	133	117
STA.	TO STA.			
FED. ROAD DIST. NO.	ILLINOIS	FED. AID PROJECT		
• 10405, ETC, 42-7&0707RS-11				



**TYPICAL ENTRANCE/EXIT RAMP COMBINATION PAVEMENT MARKINGS**



**TYPICAL EXIT ONLY LANE PAVEMENT MARKINGS**



**TYPICAL TWO LANE ENTRANCE RAMP PAVEMENT MARKINGS**

REVISIONS	
NAME	DATE
DWS	1/90
DWS	5/91
SPB	1/07

ILLINOIS DEPARTMENT OF TRANSPORTATION  
**MULTI-LANE FREEWAY PAVEMENT MARKING DETAILS**  
 SCALE: NONE  
 DRAWN BY C.A.D.D.  
 CHECKED BY  
 TC12 SHEET 2 OF 2

PLOT DATE = 3/6/2007  
 FILE NAME = K:\shw\shw\117.dgn  
 PLOT SCALE = 1/8" = 1' IN.  
 USER NAME = shw  
 D:\002111-DISTRICT DETAILS.dgn