

F.A.P. RTE.	SECTION	COUNTY	TOTAL SHEETS	SHEET NO.
330	105 B-3-1	WILL	18	1
FED. ROAD DIST. NO. 1	ILLINOIS	CONTRACT NO. 60D67		

STATE OF ILLINOIS
DEPARTMENT OF TRANSPORTATION
DIVISION OF HIGHWAYS

**PROPOSED
HIGHWAY PLANS**

F.A.P. 330 / U.S. 45
SECTION: 105 B-3-1

OVER FORKED CREEK (2.1 MI S OF MANHATTAN MONEE RD.)
BRIDGE DECK OVERLAY
PROJECT: *ESP-0330(050)*
WILL COUNTY
C-91-085-08

FOR INDEX OF SHEETS, SEE SHEET NO. 2

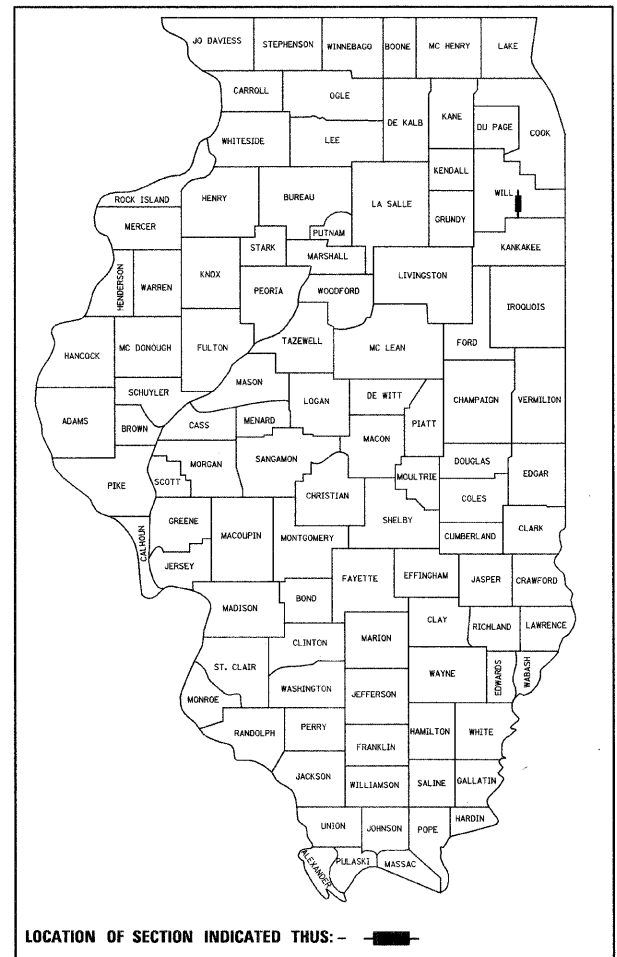
DESIGN DESIGNATION:

POSTED SPEED: 55 M.P.H.

2005 ADT = 6,200

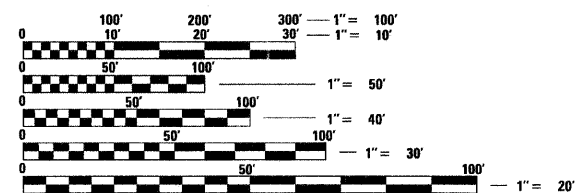
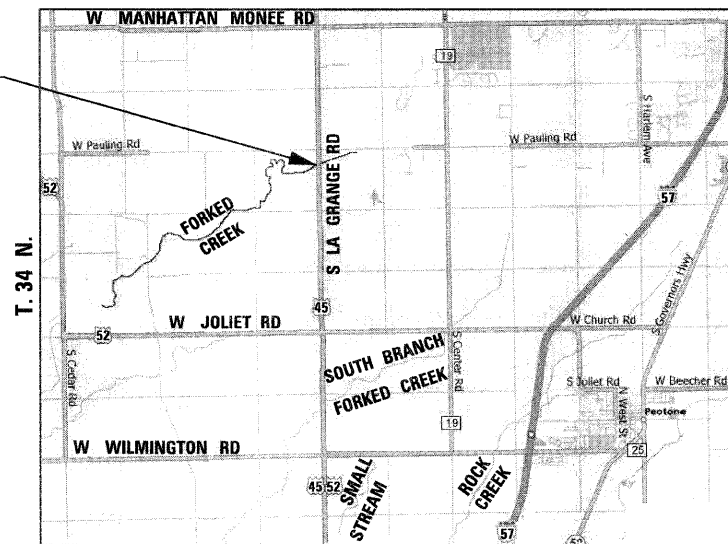
PROJECT LOCATED IN
UNINCORPORATED WILL COUNTY

D-91-085-08



GREEN GARDEN TOWNSHIP
R. 12 E.

PROJECT LOCATION:
U.S. 45
OVER FORKED CREEK
S.N. 099-0243



FULL SIZE PLANS HAVE BEEN PREPARED USING STANDARD ENGINEERING SCALES. REDUCED SIZED PLANS WILL NOT CONFORM TO STANDARD SCALES. IN MAKING MEASUREMENTS ON REDUCED PLANS, THE ABOVE SCALES MAY BE USED.

J.U.L.I.E.
JOINT UTILITY LOCATING INFORMATION FOR EXCAVATORS
1-800-892-0123
OR 811

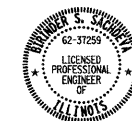
GROSS LENGTH OF PROJECT = 215.00 FEET = 0.041 MILES
NET LENGTH OF PROJECT = 215.00 FEET = 0.041 MILES

STATE OF ILLINOIS
DEPARTMENT OF TRANSPORTATION
DIVISION OF HIGHWAYS

SUBMITTED JANUARY 8, 2009
Diana M. O'Keefe
DEPUTY DIRECTOR OF HIGHWAYS, REGION ONE ENGINEER

March 13, 2009
Charles G. Ingersoll
ENGINEER OF DESIGN AND ENVIRONMENT

March 13, 2009
Christine M. Reed
DIRECTOR OF HIGHWAYS, CHIEF ENGINEER



Brinder S. Sachdeva January 06, 2009
BRINDER S. SACHDEVA, P.E. DATE
EXPIRES: 11-30-2009



Bhadresh N. Shah JAN. 06, 2009
BHADRESH N. SHAH, S.E., P.E. DATE
EXPIRES: 11-30-2010

DISTRICT ONE - DESIGN PROJECT MANAGER: ISAAC KWARTENG (847) 705-4230

CONTRACT NO. 60D67



CHRISTIAN-ROGE & ASSOCIATES, INC.
ENGINEERS - PLANNERS - SURVEYORS
211 W. WACKER DRIVE CHICAGO, IL 60606
TELEPHONE: 312-372-2023

PRINTED BY THE AUTHORITY
OF THE STATE OF ILLINOIS