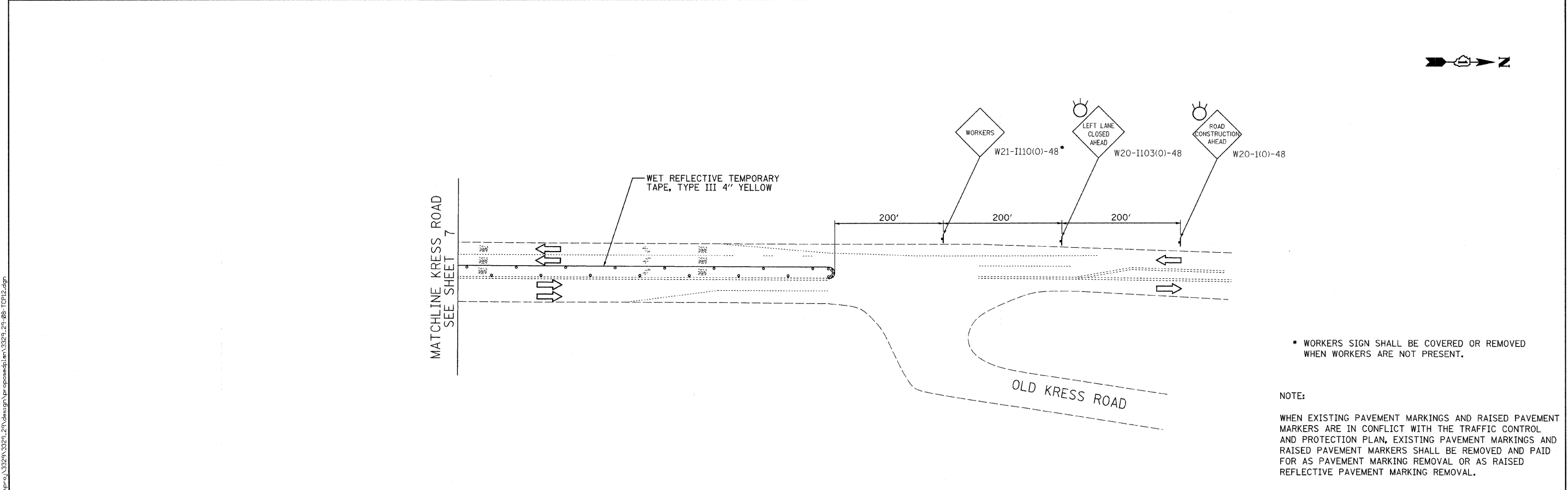


**SYMBOLS**

- ↑ Arrow board
- ▨ Work area
- ♠ Sign
- ⊙ Drum with steady burn monodirectional light (50' cts.)
- ↑ Direction Indicator barricade with steady burn monodirectional light (50' cts.)
- Flexible delineator
- ⊕ Type III barricade with flashing monodirectional lights
- ◇ Crystal, bidirectional barrier wall / guardrail marker (25' cts.)
- ▨ Temporary Pavement: Hot-mix asphalt surface course, mix "D", N50 (IL-9.5 mm), 1 1/2" Hot-mix asphalt binder course, IL 19 mm, N50 8 1/2" (in 4 lifts) (Removal is incidental to Temporary Pavement, 10")
- ▨ Temporary impact attenuator
- ⊙ Temporary signal post
- ↑ Temporary traffic signal installation
- ▬ Temporary concrete barrier wall
- Detector loops
- ⊙ Non-directional flashing beacon



\* WORKERS SIGN SHALL BE COVERED OR REMOVED WHEN WORKERS ARE NOT PRESENT.

**NOTE:**  
WHEN EXISTING PAVEMENT MARKINGS AND RAISED PAVEMENT MARKERS ARE IN CONFLICT WITH THE TRAFFIC CONTROL AND PROTECTION PLAN, EXISTING PAVEMENT MARKINGS AND RAISED PAVEMENT MARKERS SHALL BE REMOVED AND PAID FOR AS PAVEMENT MARKING REMOVAL OR AS RAISED REFLECTIVE PAVEMENT MARKING REMOVAL.

FILE NAME = n:\proj\3320\3320.dwg

**Ciorba Group, Inc.**  
CONSULTING ENGINEERS  
5507 North Cumberland Avenue, Suite 402  
Chicago, Illinois 60650  
Tel: 773.775.4009 Fax: 773.775.4014

USER NAME = wlanaster	DESIGNED - JCC	REVISED -
PLOT SCALE = 50.0000' / IN.	DRAWN - JCC	REVISED -
PLOT DATE = 1/13/2009	CHECKED - MJL	REVISED -
	DATE - 12/30/07	REVISED -

**STATE OF ILLINOIS  
DEPARTMENT OF TRANSPORTATION**

**FAP 347 / ILLINOIS ROUTE 38 (ROOSEVELT ROAD)  
OVER KRESS CREEK  
TRAFFIC CONTROL AND PROTECTION - STAGE 1**

F.A.P. RTE. 347	SECTION 2 Y-B-I	COUNTY DU PAGE	TOTAL SHEETS 34	SHEET NO. 8
FED. ROAD DIST. NO. - ILLINOIS FED. AID PROJECT				