

F.A.P. RTE.	SECTION	COUNTY	TOTAL SHEETS	SHEET NO.
870	533 X-RS-4	DUPAGE	18	1
FED. ROAD DIST. NO.	ILLINOIS CONTRACT NO.		60E20	

STATE OF ILLINOIS  
DEPARTMENT OF TRANSPORTATION  
DIVISION OF HIGHWAYS

**PROPOSED  
HIGHWAY PLANS**

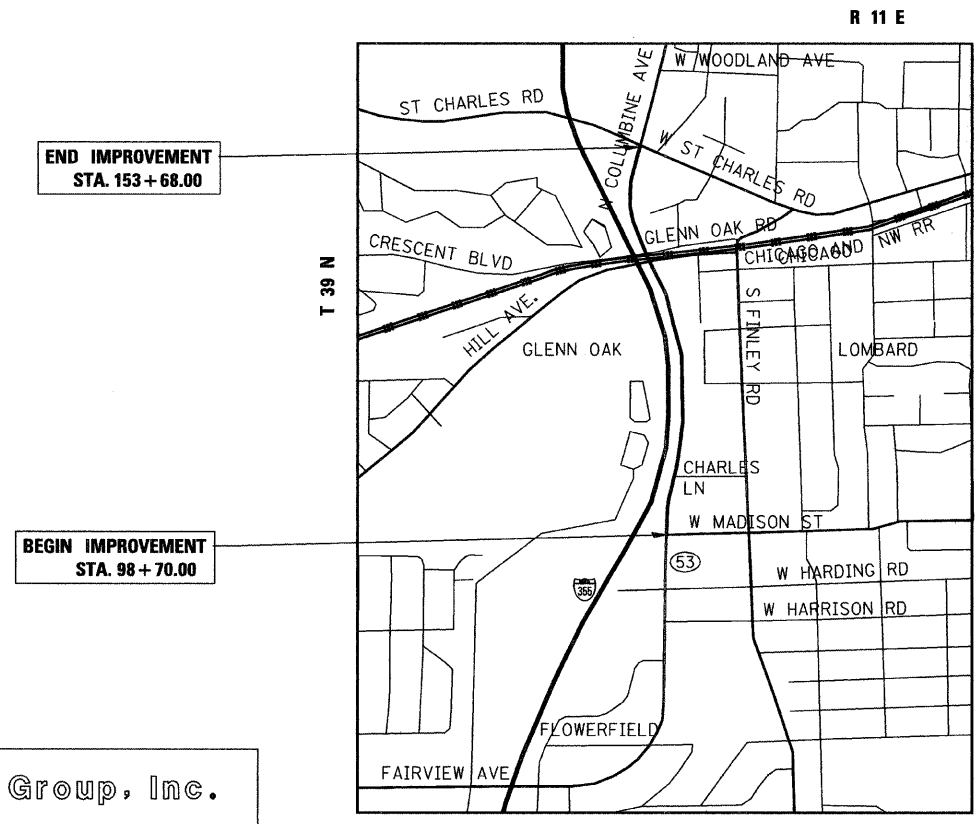
FAP 870 (IL 53)  
SECTION: 533 X-RS-4  
ST. CHARLES ROAD TO MADISON STREET  
RESURFACING (3P)  
PROJECT: *ESP-0870(011)*  
DUPAGE COUNTY  
C-91-341-08

FOR INDEX OF SHEETS, SEE SHEET NO. 2

THIS IMPROVEMENT IS LOCATED  
WITHIN THE VILLAGE OF LOMBARD

**TRAFFIC DATA**

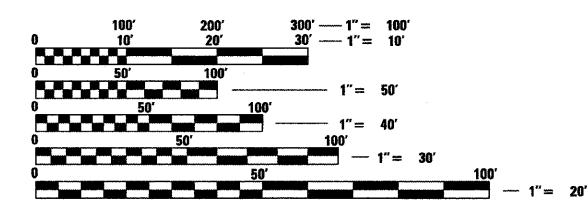
2005 ADT - 16,850  
POSTED SPEED LIMIT - 45 MPH



END IMPROVEMENT  
STA. 153 + 68.00

BEGIN IMPROVEMENT  
STA. 98 + 70.00

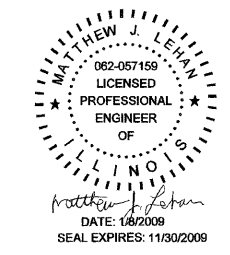
YORK TOWNSHIP  
LOCATION MAP  
1" = 1000'  
GROSS AND NET LENGTH OF PROJECT = 5498 FT = 1.041 MI.



FULL SIZE PLANS HAVE BEEN PREPARED USING STANDARD ENGINEERING SCALES. REDUCED SIZED PLANS WILL NOT CONFORM TO STANDARD SCALES. IN MAKING MEASUREMENTS ON REDUCED PLANS, THE ABOVE SCALES MAY BE USED.

J.U.L.I.E.  
JOINT UTILITY LOCATION INFORMATION FOR EXCAVATION  
1-800-892-0123  
OR 811

**Ciorba Group, Inc.**  
DESIGN FIRM  
REGISTRATION NUMBER  
184-001016  
CONSULTING ENGINEERS  
SUITE 402, 5507 NORTH CUMBERLAND AVE  
CHICAGO, ILLINOIS 60656 ☎ (773) 775-4009



STATE OF ILLINOIS  
DEPARTMENT OF TRANSPORTATION  
DIVISION OF HIGHWAYS  
SUBMITTED JANUARY 8, 20 09  
*Diana M. O'Keefe*  
DEPUTY DIRECTOR OF HIGHWAYS, REGION ENGINEER  
March 13, 20 09  
*Charles J. Smausold*  
ENGINEER OF DESIGN AND ENVIRONMENT  
March 13, 20 09  
*Christine M. Reed*  
DIRECTOR OF HIGHWAYS, CHIEF ENGINEER

**PRINTED BY THE AUTHORITY  
OF THE STATE OF ILLINOIS**

DISTRICT 1 DESIGN PLAN PREPARATION ENGINEER: K. ENG (847)705-4247

CONTRACT NO. 60E20