

F.A.P. RTE.	SECTION	COUNTY	TOTAL SHEETS	SHEET NO.
341	2008-062 RS	COOK	28	1
FED. ROAD DIST. NO. 1		ILLINOIS	CONTRACT NO. 60F39	

FOR INDEX OF SHEETS, SEE SHEET NO. 2

**DESIGN DESIGNATION:**  
**SPEED LIMIT : 35 - 40 M.P.H.**  
**2007 ADT = 39,300**

**PROJECT LOCATED IN THE CITY OF DES PLAINES AND THE VILLAGE OF ROSEMONT**

STATE OF ILLINOIS  
DEPARTMENT OF TRANSPORTATION  
DIVISION OF HIGHWAYS  
**PROPOSED HIGHWAY PLANS**

FAP 341 (TOUHY AVENUE)  
SECTION: 2008-062 RS  
LEE STREET TO DES PLAINES RIVER  
RESURFACING (3P)  
PROJECT: *ESP-0341(045)*  
**COOK COUNTY**  
**C-91-070-09**

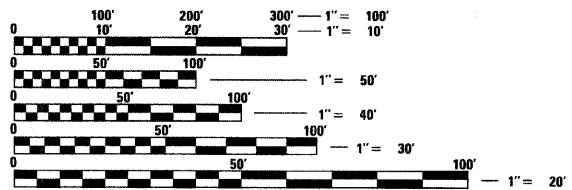
MAINE TOWNSHIP  
R. 11 E.



STATE OF ILLINOIS  
DEPARTMENT OF TRANSPORTATION  
DIVISION OF HIGHWAYS

SUBMITTED JANUARY 13, 20 09  
*Diana M. O'Keefe*  
DEPUTY DIRECTOR OF HIGHWAYS, REGION ONE ENGINEER  
March 13, 20 09  
*Charles J. Invernizzi*  
ENGINEER OF DESIGN AND ENVIRONMENT  
March 13, 20 09  
*Christine M. Reed*  
DIRECTOR OF HIGHWAYS, CHIEF ENGINEER

DISTRICT ONE - PLAN PREP ENGINEER: KEN ENG (847) 705-4247

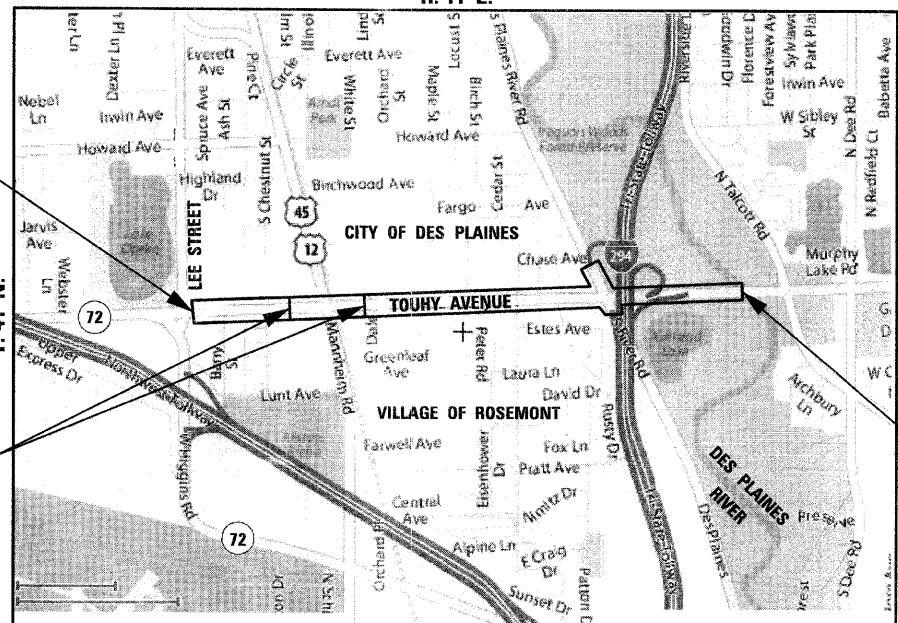


FULL SIZE PLANS HAVE BEEN PREPARED USING STANDARD ENGINEERING SCALES. REDUCED SIZED PLANS WILL NOT CONFORM TO STANDARD SCALES. IN MAKING MEASUREMENTS ON REDUCED PLANS, THE ABOVE SCALES MAY BE USED.

J.U.L.I.E.  
JOINT UTILITY LOCATING INFORMATION FOR EXCAVATORS  
1-800-892-0123  
OR 811

**PROJECT BEGINS STA. 135 + 88**

**OMISSION: STA. 153 + 19 TO STA. 165 + 06**



**PROJECT ENDS STA. 223 + 37**

**GROSS LENGTH OF PROJECT = 8,749 FEET = 1.657 MILES**  
**NET LENGTH OF PROJECT = 7,562 FEET = 1.432 MILES**



*Birinder S. Sachdeva*  
BIRINDER S. SACHDEVA, P.E.  
EXPIRES: 11-30-2009

January 7, 2009  
DATE

CONTRACT NO. 60F39

**CR & A**  
CHRISTIAN-ROGE & ASSOCIATES, INC.  
ENGINEERS - PLANNERS - SURVEYORS  
211 W. WACKER DRIVE CHICAGO, IL 60606  
TELEPHONE: 312-372-2023

**PRINTED BY THE AUTHORITY OF THE STATE OF ILLINOIS**